

ROUTE NO.	SECTION	COUNTY	TOTAL SHEETS	SHEET NO.
F.A.S. 1425	99-00103-00-FP	HANCOCK	11	2
ROAD DISTRICT		ILLINOIS		

SUMMARY OF QUANTITIES

CODE NO.	ITEM	UNIT	QUANTITY
20200100	EARTH EXCAVATION	CU YD	11,817
20400800	FURNISHED EXCAVATION	CU YD	6809
28000250	TEMPORARY EROSION CONTROL SEEDING	POUND	500
28000300	TEMPORARY DITCH CHECKS	EACH	4
28000400	PERIMETER EROSION BARRIER	FOOT	1673
28100807	STONE DUMPED RIPRAP, CLASS A4	TON	19
* 35100100	AGGREGATE BASE COURSE, TYPE A	TON	4906
* 40200800	AGGREGATE SURFACE COURSE, TYPE B	TON	350
40600100	BITUMINOUS MATERIALS (PRIME COAT)	GALLON	5918
* 48100100	AGGREGATE SHOULDERS, TYPE A	TON	940
50100100	REMOVAL OF EXISTING STRUCTURES	EACH	1
54010806	PRECAST CONCRETE BOX CULVERT 8'X6'	FOOT	72
* 542C0220	PIPE CULVERTS, CLASS C, TYPE 1 15"	FOOT	30
* 542C0223	PIPE CULVERTS, CLASS C, TYPE 1 18"	FOOT	130
* 542C0229	PIPE CULVERTS, CLASS C, TYPE 1 24"	FOOT	48
* 542C1981	PIPE CULVERTS, CLASS C, TYPE 3 96"	FOOT	124
* 542C5470	PIPE CULVERTS, CLASS C, TYPE 1 EQUIVALENT ROUND-SIZE 15"	FOOT	116
60100060	CONCRETE HEADWALLS FOR PIPE DRAINS	EACH	6
60107600	PIPE UNDERDRAINS 4"	FOOT	2900
60108100	PIPE UNDERDRAINS 4" (SPECIAL)	FOOT	36
67100100	MOBILIZATION	L SUM	1
* 70101700	TRAFFIC CONTROL AND PROTECTION	L SUM	1
70300100	SHORT-TERM PAVEMENT MARKING	FOOT	770
* X0300051	PRECAST CONCRETE BOX CULVERT END SECTIONS 8'X6'	EACH	2
XX006545	METAL END SECTIONS 96"	EACH	2
* X4066414	BITUMINOUS CONCRETE SURFACE COURSE, SUPERPAVE, MIX "C", N50	TON	670
* X4066614	BITUMINOUS CONCRETE BINDER COURSE, SUPERPAVE, IL -19.0, N50	TON	2180

* SEE SPECIAL PROVISIONS

CONSTRUCTION TYPE CODE: 1000

GENERAL NOTES

WHERE SECTION OR SUBSECTION MONUMENTS ARE ENCOUNTERED, THE ENGINEER SHALL BE NOTIFIED BEFORE SUCH MONUMENTS ARE REMOVED. THE CONTRACTOR SHALL PROTECT AND CAREFULLY PRESERVE ALL PROPERTY MARKS AND MONUMENTS UNTIL THE OWNER, AND AUTHORIZED SURVEYOR OR AGENT HAS WITNESSED OR OTHERWISE REFERENCED THEIR LOCATION.

SEEDING TO BE DONE BY OTHERS IN ACCORDANCE WITH I.D.O.T. STANDARD SPECIFICATIONS.

TEMPORARY AND/OR PERMANENT PAVEMENT MARKING BY OTHERS. PLAN ELEVATIONS REPRESENT ASSUMED DATUM.

TRANSITION FROM EXISTING ROADWAY TO PROPOSED ROADWAY TO BE CONSTRUCTED FROM STA. 186+50.00 TO STA. 187+00.00.

ANY EARTHWORK, EXCAVATION AND BACKFILL FROM STA. 201+25 TO 201+72 WILL BE INCIDENTAL TO CONCRETE BOX CULVERTS.

THE CHANNEL SHALL BE EXCAVATED WITHIN THE LIMITS OF THE PROPOSED BOX CULVERT WINGWALLS, THEN TAPER TO THE EXISTING CHANNEL AT THE R.O.W. LINES.

ANY TREE OR BRUSH REMOVAL WITHIN THE PROPOSED R.O.W. DETERMINED BY THE ENGINEER TO BE REMOVED WILL BE INCIDENTAL TO EARTH EXCAVATION.

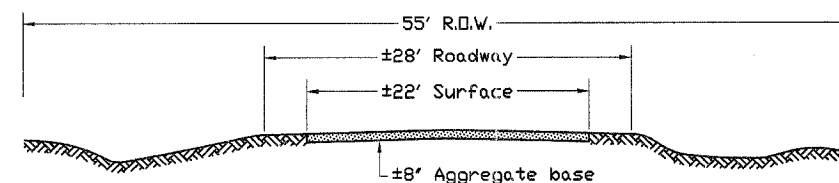
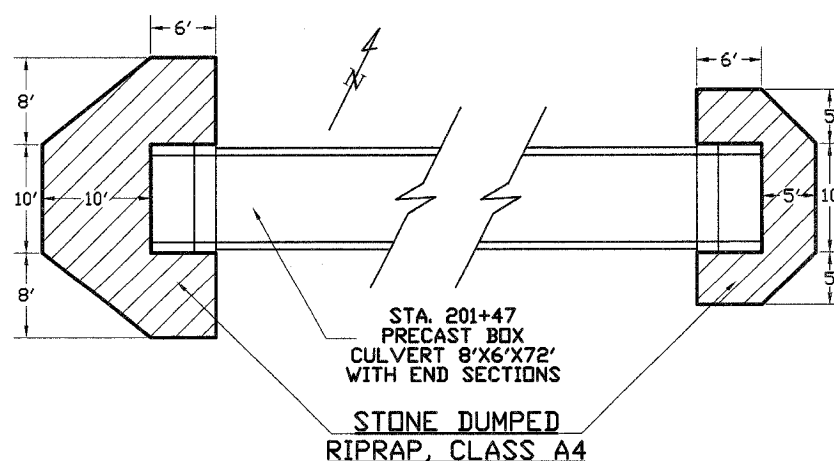
INSTALL PIPE UNDERDRAINS 4" RIGHT AND LEFT OF CENTERLINE AT THE OUTSIDE EDGE OF THE AGGREGATE BASE TO A DEPTH OF 24" BELOW THE PROPOSED EDGE OF PAVEMENT ELEVATION FROM STA. 186+50 TO 201+00. PIPE UNDERDRAINS 4" SPECIAL AND CONCRETE HEADWALLS FOR PIPE DRAINS WILL OUTLET THE PIPE UNDERDRAINS 4" AT STA. 191+50 RT. & LT., 196+50 RT. & LT. AND 201+00 RT. & LT.

APPLICATION RATES USED IN QUANTITY CALCULATIONS

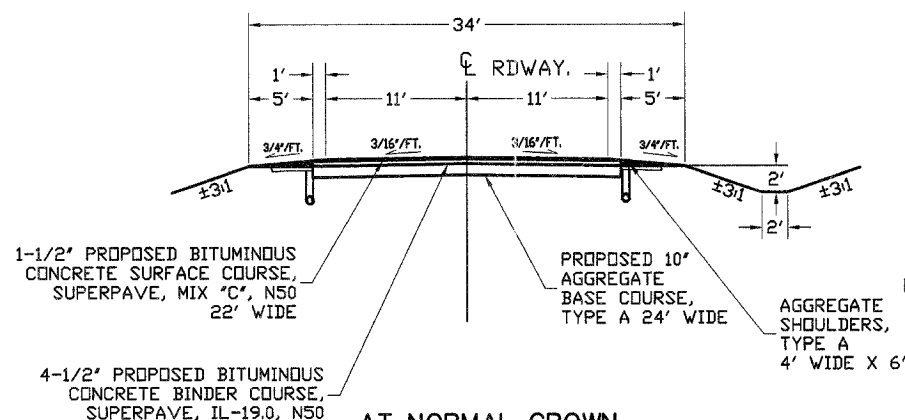
GRANULAR MATERIALS	2.05	TON / CU. YD.
BITUMINOUS MATERIALS (PRIME COAT)	0.50	GALLON / SQ. YD.
BITUMINOUS MATERIALS (TACK COAT)	0.10	GALLON / SQ. YD.
BINDER, IL-19.0 N50	112.0	LBS. / SQ. YD. / INCH
SURFACE (MIX "C") N50	112.0	LBS. / SQ. YD. / INCH
STONE DUMPED RIPRAP, CLASS A4	0.6	TON / SQ. YD. / 16" THICKNESS

NOTE: THE ABOVE NOTED APPLICATION RATES ARE FOR QUANTITY CALCULATIONS ONLY. THE APPLICATION RATE TO BE APPLIED WILL BE DETERMINED BY THE ENGINEER AT THE TIME OF PLACEMENT.

TEMPORARY EROSION CONTROL			
ITEM	LOCATION	UNIT	QUANTITY
PERIMETER EROSION BARRIER	± STA. 201+00, 65' LT. TO 65' RT.	FOOT	130.0
	± STA. 202+00, 65' LT. TO 65' RT.	FOOT	130.0
	± STA. 214+50, 80' LT. TO 80' RT.	FOOT	160.0
	± STA. 215+50, 80' LT. TO 80' RT.	FOOT	160.0
	STA. 210+00 TO 217+32 RT. ON R.O.W. LINE	FOOT	743.0
TEMPORARY EROSION CONTROL SEEDINGS	STA. 214+00 TO 217+56 LT. ON R.O.W. LINE	FOOT	350.0
	TOTAL		1,673.0
TEMPORARY EROSION CONTROL SEEDINGS	STA. 186+50.0 TO 217+30.8 FROM EDGE OF SHOULDERS TO PROPOSED R.O.W. RT. & LT.	POUND	500.0
	TOTAL		
TEMPORARY DITCH CHECKS	± STA. 201+00 RT. & LT.	EACH	2.0
	± STA. 202+00 RT. & LT.	EACH	2.0
TOTAL			4.0

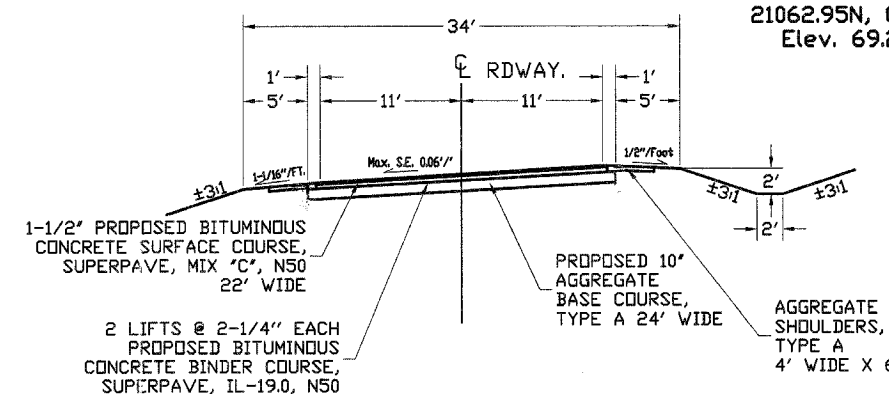


TYPICAL EXISTING ROADWAY CROSS SECTION



AT NORMAL CROWN
TYPICAL PROPOSED ROADWAY CROSS SECTION

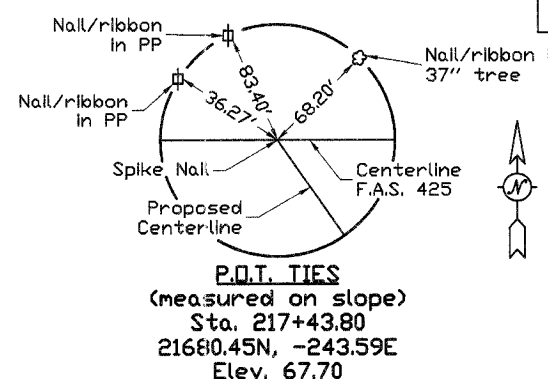
STA. 187+00 TO STA. 210+73 AND STA. 215+19 TO STA. 216+00



AT FULL SUPERELEVATION
TYPICAL PROPOSED ROADWAY CROSS SECTION

STA. 212+38 TO STA. 213+54
ATTAINED: 210+73 TO 212+38. REMOVED 213+54 TO 215+19
(MAX. ROLLOVER 10%)

BITUMINOUS CONCRETE MIXTURE REQUIREMENTS			
ITEM	ASPHALT GRADE	ALLOWABLE RAP	VOIDS
BINDER, IL-19.0 N50	PG 58-28	20%	4.0%
SURFACE (MIX "C") N50	PG 64-22	15%	4.0%



SUMMARY OF QUANTITIES, GENERAL NOTES & TYPICAL CROSS SECTIONS

SECTION 99-00103-00-FP
COUNTY HIGHWAY 26
HANCOCK COUNTY