

ROUTE NO.	SECTION	COUNTY	TOTAL SHEETS	SHEET NO.
F.A.S. 1425	99-00103-00-FP	HANCOCK	11	1
F.H.W.A. REG. NO. 4	ILLINOIS	PROJ. NO.		

**STATE OF ILLINOIS
DEPARTMENT OF TRANSPORTATION
DIVISION OF HIGHWAYS**

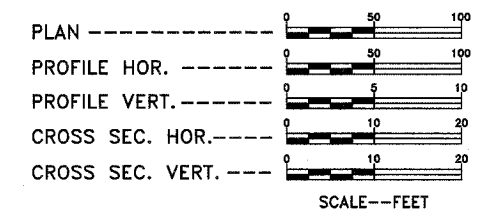
PLANS FOR PROPOSED SURFACE TRANSPORTATION/RURAL PROGRAM

**F.A.S. ROUTE 1425/C.H. 26
SECTION 99-00103-00-FP
HANCOCK COUNTY
PROJECT NO. SR-1425 (103)
JOB NO. C-96-227-03**

INDEX OF SHEETS

SHEET NO.	TITLE
1.	COVER SHEET
2.	SUMMARY OF QUANTITIES/TYPICAL SECTION/GENERAL NOTES
3.	INTERSECTION, ENTRANCE & MAILBOX TURNOUT DETAILS
4. - 6.	PLAN & PROFILE
7. - 11.	ROADWAY CROSS SECTIONS

SCALES



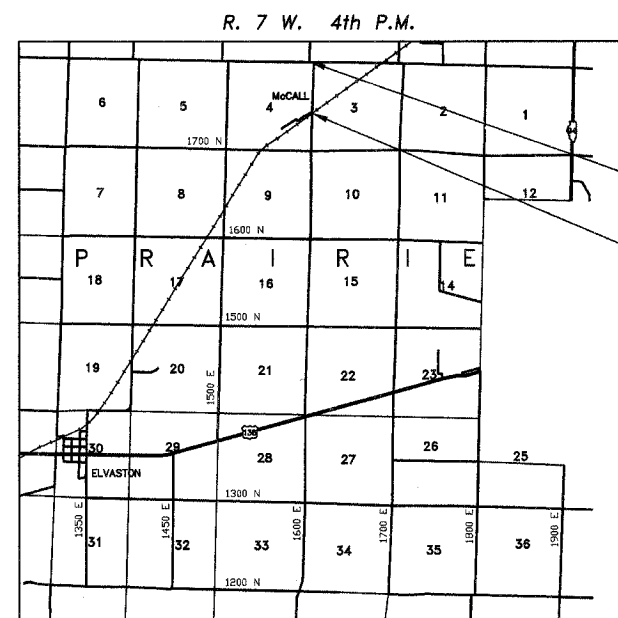
LIST OF STANDARDS

- 280001-02
- 601001
- 601101
- 630001-06
- 701201-02
- 702001-06
- BLR 21-6
- BLR 22-4
- BLR 23-1

UTILITIES

NAME	ADDRESS
NICOR GAS	(630) 896-1000
W.I.E.C.	(217) 357-3125
FRONTIER COMMUNICATIONS	(217) 854-3126
MCLEOD USA	(217) 876-7194
DALLAS RURAL WATER DIST.	(309) 337-3718

TOLL FREE JOINT UTILITY LOCATING
INFORMATION FOR EXCAVATORS (J.U.L.I.E.)
TELEPHONE NUMBER 1-800-892-0123

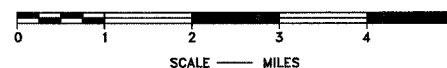


IMPROVEMENT ENDS
STA. 217+30.80

IMPROVEMENT BEGINS
STA. 136+50.00

SECTION 99-00103-00-FP CONSISTS OF A FOUR AND ONE-HALF INCH BY 24 FOOT WIDE BITUMINOUS CONCRETE BINDER COURSE AND AN INCH AND ONE-HALF BY 22 FOOT WIDE BITUMINOUS CONCRETE SURFACE COURSE ON A PROPOSED AGGREGATE BASE COURSE TYPE A.

LOCATION MAP



NET LENGTH OF SECTION = 3080.80 FEET = 0.583 MILES

RURAL COLLECTOR
ADT = <400
DESIGN SPEED: 40 MPH

THESE PLANS WERE PREPARED BY ME OR BY A FULL-TIME MEMBER OF MY STAFF WORKING UNDER MY PERSONAL SUPERVISION.

Paul E. Sly
PAUL E. SLY
COUNTY ENGINEER
ILLINOIS PROFESSIONAL NO. 082-043309
EXPIRES 11/30/2007

APPROVED 2/10 *Paul E. Sly* 2006
COUNTY ENGINEER

PASSED MARCH 1 2006
Jim Mc...
DISTRICT SIX ENGINEER OF LOCAL ROADS & STREETS

PASSED MARCH 1 2006
W.R. Jones
DISTRICT SIX ENGINEER OF CONSTRUCTION

RELEASING FOR BID BASED ON LIMITED REVIEW MARCH 1 2006
Christine M Reed
DEPUTY DIRECTOR OF HIGHWAYS/ REGION FOUR ENGINEER

STATE OF ILLINOIS
DEPARTMENT OF TRANSPORTATION

ROUTE NO.	SECTION	COUNTY	TOTAL SHEETS	SHEET NO.
F.A.S. 1425	99-00103-00-FP	HANCOCK	11	2
ROAD DISTRICT		ILLINOIS		

SUMMARY OF QUANTITIES

CODE NO.	ITEM	UNIT	QUANTITY
20200100	EARTH EXCAVATION	CU YD	11,817
20400800	FURNISHED EXCAVATION	CU YD	6809
28000250	TEMPORARY EROSION CONTROL SEEDING	POUND	500
28000300	TEMPORARY DITCH CHECKS	EACH	4
28000400	PERIMETER EROSION BARRIER	FOOT	1673
28100807	STONE DUMPED RIPRAP, CLASS A4	TON	19
* 35100100	AGGREGATE BASE COURSE, TYPE A	TON	4906
* 40200800	AGGREGATE SURFACE COURSE, TYPE B	TON	350
40600100	BITUMINOUS MATERIALS (PRIME COAT)	GALLON	5918
* 48100100	AGGREGATE SHOULDERS, TYPE A	TON	940
50100100	REMOVAL OF EXISTING STRUCTURES	EACH	1
54010806	PRECAST CONCRETE BOX CULVERT 8'X6'	FOOT	72
* 542C0220	PIPE CULVERTS, CLASS C, TYPE 1 15"	FOOT	30
* 542C0223	PIPE CULVERTS, CLASS C, TYPE 1 18"	FOOT	130
* 542C0229	PIPE CULVERTS, CLASS C, TYPE 1 24"	FOOT	48
* 542C1981	PIPE CULVERTS, CLASS C, TYPE 3 96"	FOOT	124
* 542C5470	PIPE CULVERTS, CLASS C, TYPE 1 EQUIVALENT ROUND-SIZE 15"	FOOT	116
60100060	CONCRETE HEADWALLS FOR PIPE DRAINS	EACH	6
60107600	PIPE UNDERDRAINS 4"	FOOT	2900
60108100	PIPE UNDERDRAINS 4" (SPECIAL)	FOOT	36
67100100	MOBILIZATION	L SUM	1
* 70101700	TRAFFIC CONTROL AND PROTECTION	L SUM	1
70300100	SHORT-TERM PAVEMENT MARKING	FOOT	770
* X0300051	PRECAST CONCRETE BOX CULVERT END SECTIONS 8'X6'	EACH	2
XX006545	METAL END SECTIONS 96"	EACH	2
* X4066414	BITUMINOUS CONCRETE SURFACE COURSE, SUPERPAVE, MIX "C", N50	TON	670
* X4066614	BITUMINOUS CONCRETE BINDER COURSE, SUPERPAVE, IL -19.0, N50	TON	2180

* SEE SPECIAL PROVISIONS

CONSTRUCTION TYPE CODE: 1000

GENERAL NOTES

WHERE SECTION OR SUBSECTION MONUMENTS ARE ENCOUNTERED, THE ENGINEER SHALL BE NOTIFIED BEFORE SUCH MONUMENTS ARE REMOVED. THE CONTRACTOR SHALL PROTECT AND CAREFULLY PRESERVE ALL PROPERTY MARKS AND MONUMENTS UNTIL THE OWNER, AND AUTHORIZED SURVEYOR OR AGENT HAS WITNESSED OR OTHERWISE REFERENCED THEIR LOCATION.

SEEDING TO BE DONE BY OTHERS IN ACCORDANCE WITH I.D.O.T. STANDARD SPECIFICATIONS.

TEMPORARY AND/OR PERMANENT PAVEMENT MARKING BY OTHERS. PLAN ELEVATIONS REPRESENT ASSUMED DATUM.

TRANSITION FROM EXISTING ROADWAY TO PROPOSED ROADWAY TO BE CONSTRUCTED FROM STA. 186+50.00 TO STA. 187+00.00.

ANY EARTHWORK, EXCAVATION AND BACKFILL FROM STA. 201+25 TO 201+72 WILL BE INCIDENTAL TO CONCRETE BOX CULVERTS.

THE CHANNEL SHALL BE EXCAVATED WITHIN THE LIMITS OF THE PROPOSED BOX CULVERT WINGWALLS, THEN TAPER TO THE EXISTING CHANNEL AT THE R.O.W. LINES.

ANY TREE OR BRUSH REMOVAL WITHIN THE PROPOSED R.O.W. DETERMINED BY THE ENGINEER TO BE REMOVED WILL BE INCIDENTAL TO EARTH EXCAVATION.

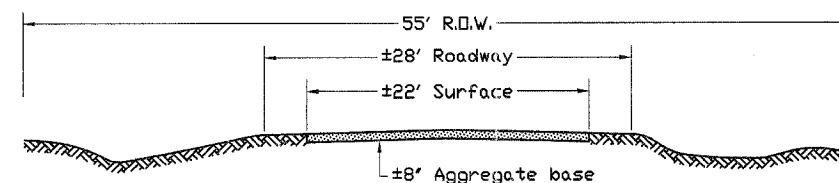
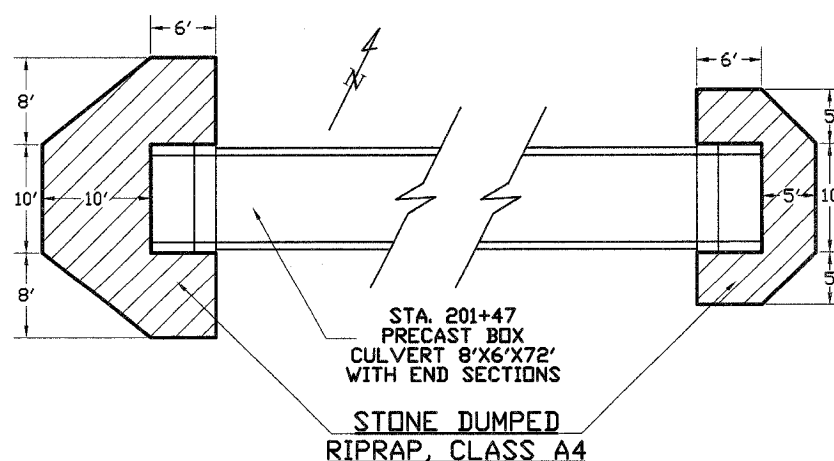
INSTALL PIPE UNDERDRAINS 4" RIGHT AND LEFT OF CENTERLINE AT THE OUTSIDE EDGE OF THE AGGREGATE BASE TO A DEPTH OF 24" BELOW THE PROPOSED EDGE OF PAVEMENT ELEVATION FROM STA. 186+50 TO 201+00. PIPE UNDERDRAINS 4" SPECIAL AND CONCRETE HEADWALLS FOR PIPE DRAINS WILL OUTLET THE PIPE UNDERDRAINS 4" AT STA. 191+50 RT. & LT., 196+50 RT. & LT. AND 201+00 RT. & LT.

APPLICATION RATES USED IN QUANTITY CALCULATIONS

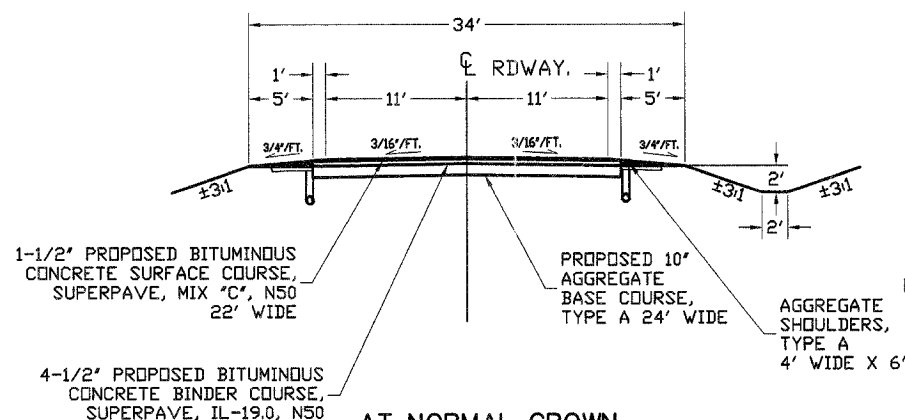
GRANULAR MATERIALS	2.05	TON / CU. YD.
BITUMINOUS MATERIALS (PRIME COAT)	0.50	GALLON / SQ. YD.
BITUMINOUS MATERIALS (TACK COAT)	0.10	GALLON / SQ. YD.
BINDER, IL-19.0 N50	112.0	LBS. / SQ. YD. / INCH
SURFACE (MIX "C") N50	112.0	LBS. / SQ. YD. / INCH
STONE DUMPED RIPRAP, CLASS A4	0.6	TON / SQ. YD. / 16" THICKNESS

NOTE: THE ABOVE NOTED APPLICATION RATES ARE FOR QUANTITY CALCULATIONS ONLY. THE APPLICATION RATE TO BE APPLIED WILL BE DETERMINED BY THE ENGINEER AT THE TIME OF PLACEMENT.

TEMPORARY EROSION CONTROL			
ITEM	LOCATION	UNIT	QUANTITY
PERIMETER EROSION BARRIER	± STA. 201+00, 65' LT. TO 65' RT.	FOOT	130.0
	± STA. 202+00, 65' LT. TO 65' RT.	FOOT	130.0
	± STA. 214+50, 80' LT. TO 80' RT.	FOOT	160.0
	± STA. 215+50, 80' LT. TO 80' RT.	FOOT	160.0
	STA. 210+00 TO 217+32 RT. ON R.O.W. LINE	FOOT	743.0
	STA. 214+00 TO 217+56 LT. ON R.O.W. LINE	FOOT	350.0
	TOTAL		1,673.0
TEMPORARY EROSION CONTROL SEEDINGS	STA. 186+50.0 TO 217+30.8 FROM EDGE OF SHOULDERS TO PROPOSED R.O.W. RT. & LT.	POUND	500.0
TEMPORARY DITCH CHECKS	± STA. 201+00 RT. & LT.	EACH	2.0
	± STA. 202+00 RT. & LT.	EACH	2.0
	TOTAL		4.0

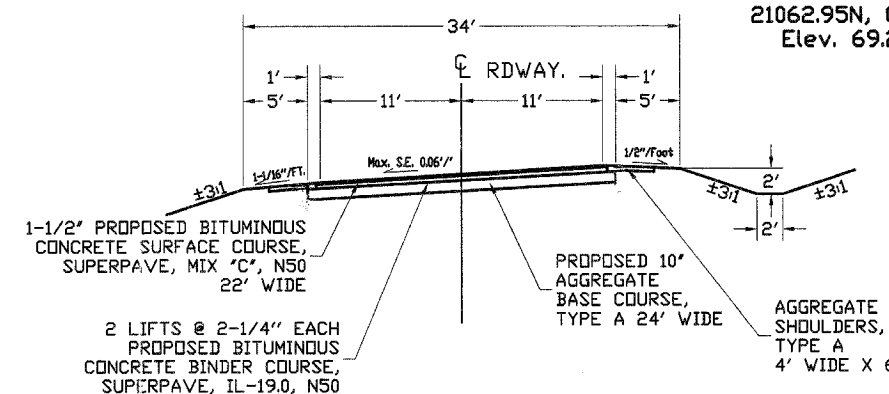


TYPICAL EXISTING ROADWAY CROSS SECTION



AT NORMAL CROWN
TYPICAL PROPOSED ROADWAY CROSS SECTION

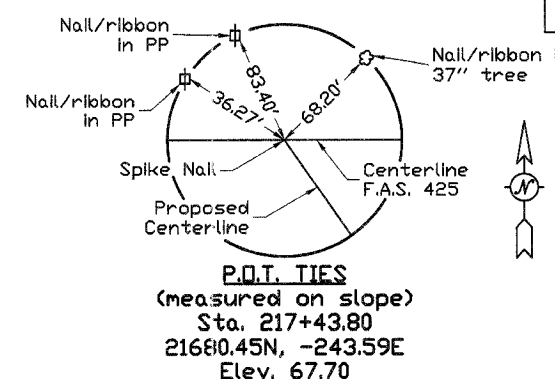
STA. 187+00 TO STA. 210+73 AND STA. 215+19 TO STA. 216+00



AT FULL SUPERELEVATION
TYPICAL PROPOSED ROADWAY CROSS SECTION

STA. 212+38 TO STA. 213+54
ATTAINED: 210+73 TO 212+38. REMOVED 213+54 TO 215+19
(MAX. ROLLOVER 10%)

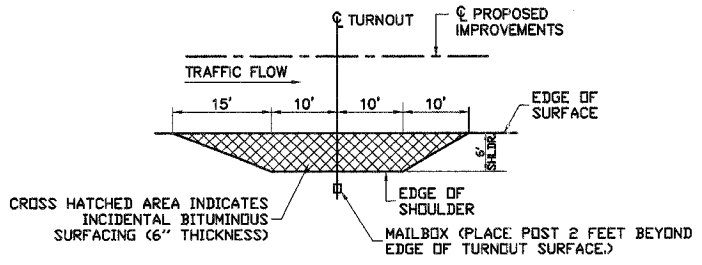
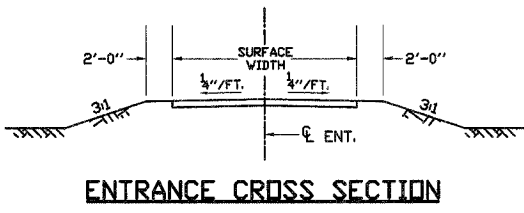
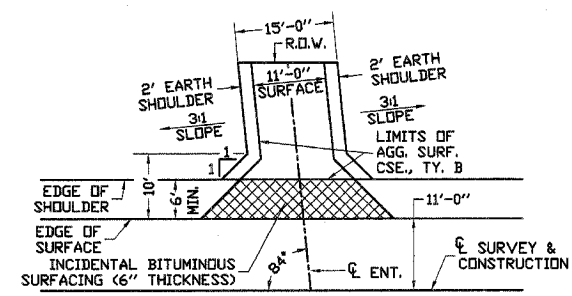
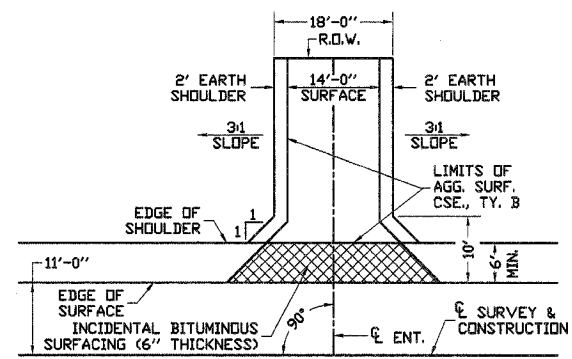
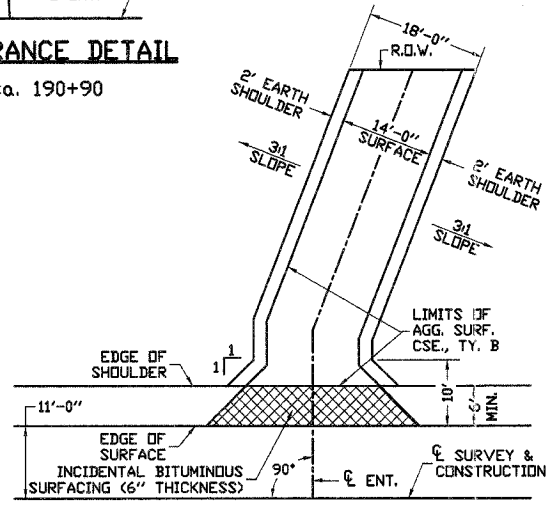
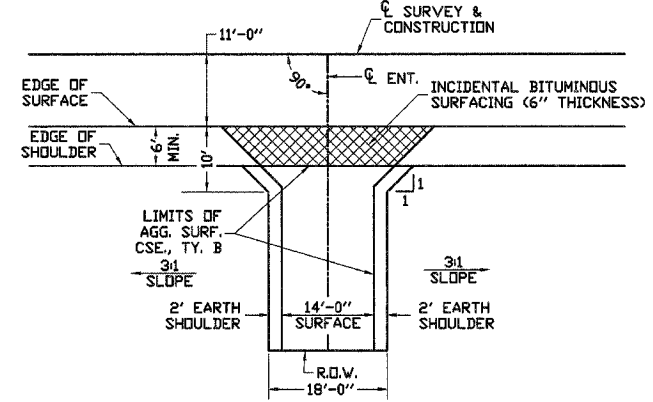
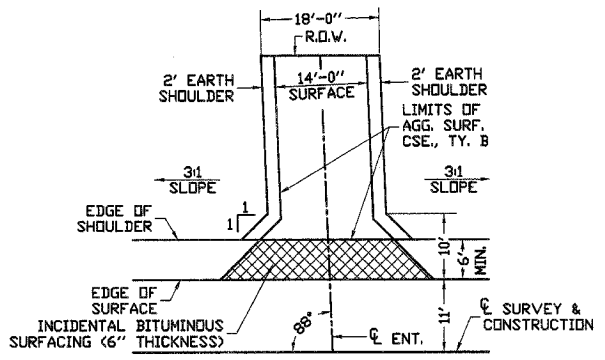
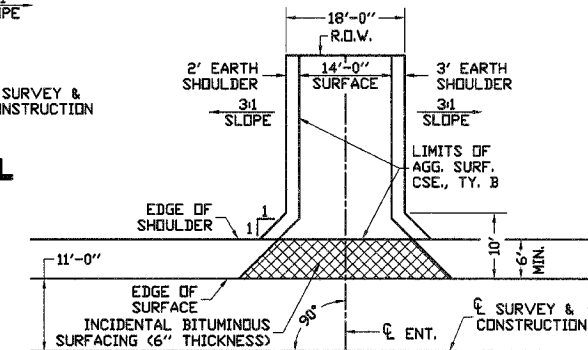
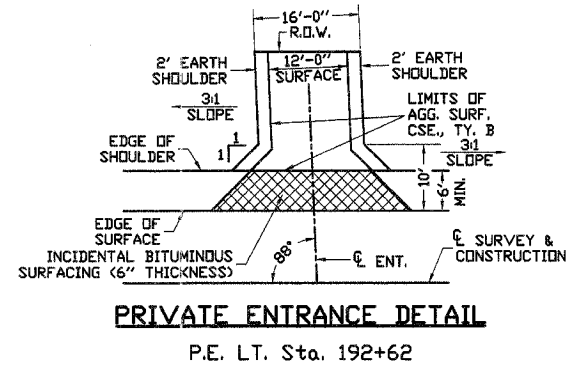
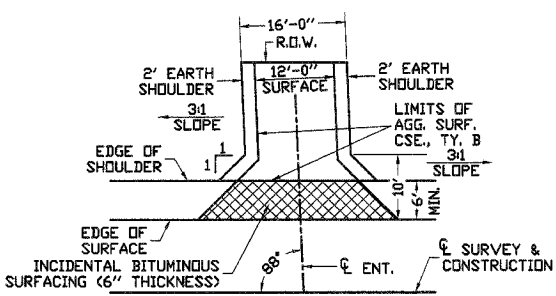
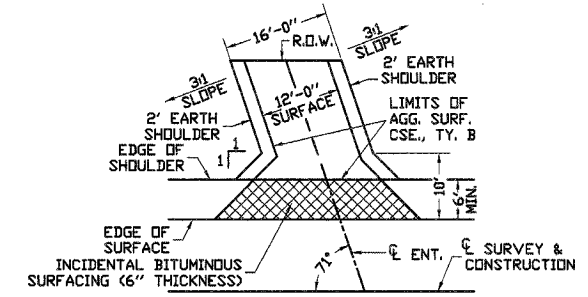
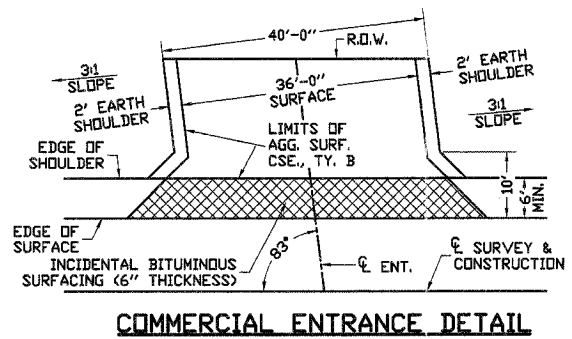
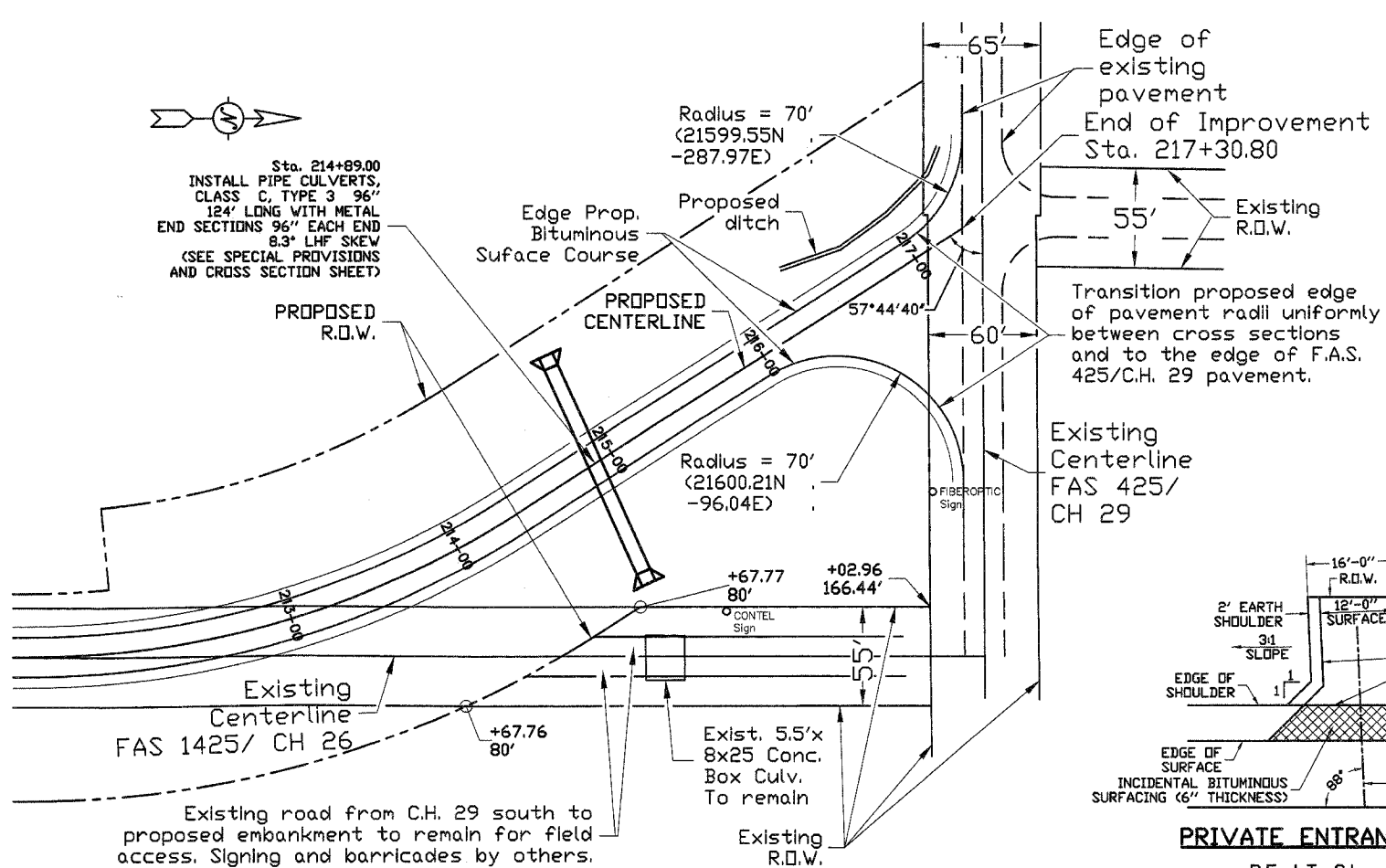
BITUMINOUS CONCRETE MIXTURE REQUIREMENTS			
ITEM	ASPHALT GRADE	ALLOWABLE RAP	VOIDS
BINDER, IL-19.0 N50	PG 58-28	20%	4.0%
SURFACE (MIX "C") N50	PG 64-22	15%	4.0%



SUMMARY OF QUANTITIES, GENERAL NOTES & TYPICAL CROSS SECTIONS

SECTION 99-00103-00-FP
COUNTY HIGHWAY 26
HANCOCK COUNTY

ROUTE NO.	SECTION	COUNTY	TOTAL SHEETS	SHEET NO.
F.A.S. 1425	99-00103-00-FP	HANCOCK	11	3
ROAD DISTRICT	ILLINOIS			



INTERSECTION, ENTRANCE & MAILBOX TURNOUT DETAILS

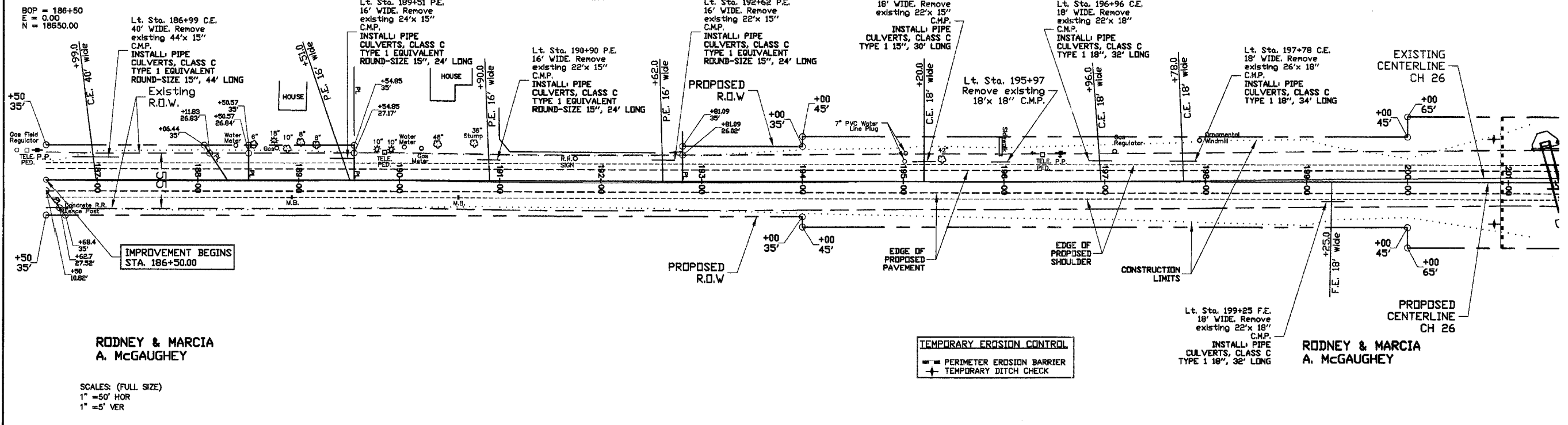
SECTION 99-00103-00-FP
COUNTY HIGHWAY 26
HANCOCK COUNTY

ROUTE NO.	SECTION	COUNTY	TOTAL SHEETS	SHEET NO.
F.A.S. 1425	00105-00-7P	HANCOCK	11	4
F.H.W.A. REG. NO. 4 ILLINOIS			PROJECT	

CROP PRODUCTION DONALD L. EDWARD D. SCHILSON DYCUS SERVICES, INC.

ERIC S. LASHBROOK & BRANDY J. LASHBROOK

M & T HARRELL LIMITED PARTNERSHIP

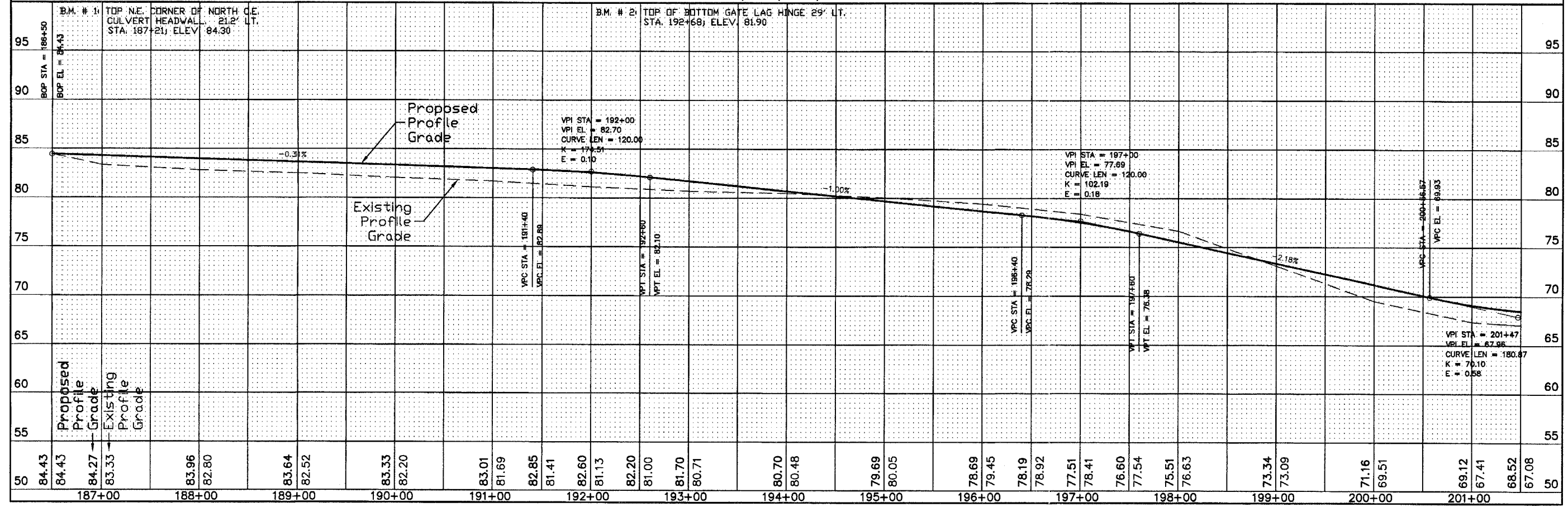


RODNEY & MARCIA A. MCGAUGHEY

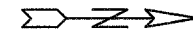
RODNEY & MARCIA A. MCGAUGHEY

SCALES: (FULL SIZE)
1" = 50' HOR
1" = 5' VER

TEMPORARY EROSION CONTROL
 - PERIMETER EROSION BARRIER
 + TEMPORARY DITCH CHECK



ROUTE NO.	SECTION	COUNTY	TOTAL SHEETS	SHEET NO.
F.A.S. 1425	99-00103-00-PF	HANCOCK	11	5
F.H.W.A. REG. NO. 4	ILLINOIS	PROJECT		



M & T HARRELL LIMITED PARTNERSHIP

Lt. Sta. 201+79 P.E.
18' WIDE. Remove existing 22"x 15" C.M.P.
INSTALL PIPE CULVERTS, CLASS C TYPE 1 24", 48' LONG
41.00' Lt. Sta. 201+48.0, El. 58.50
29.34' Lt. Sta. 201+94.3, El. 63.65

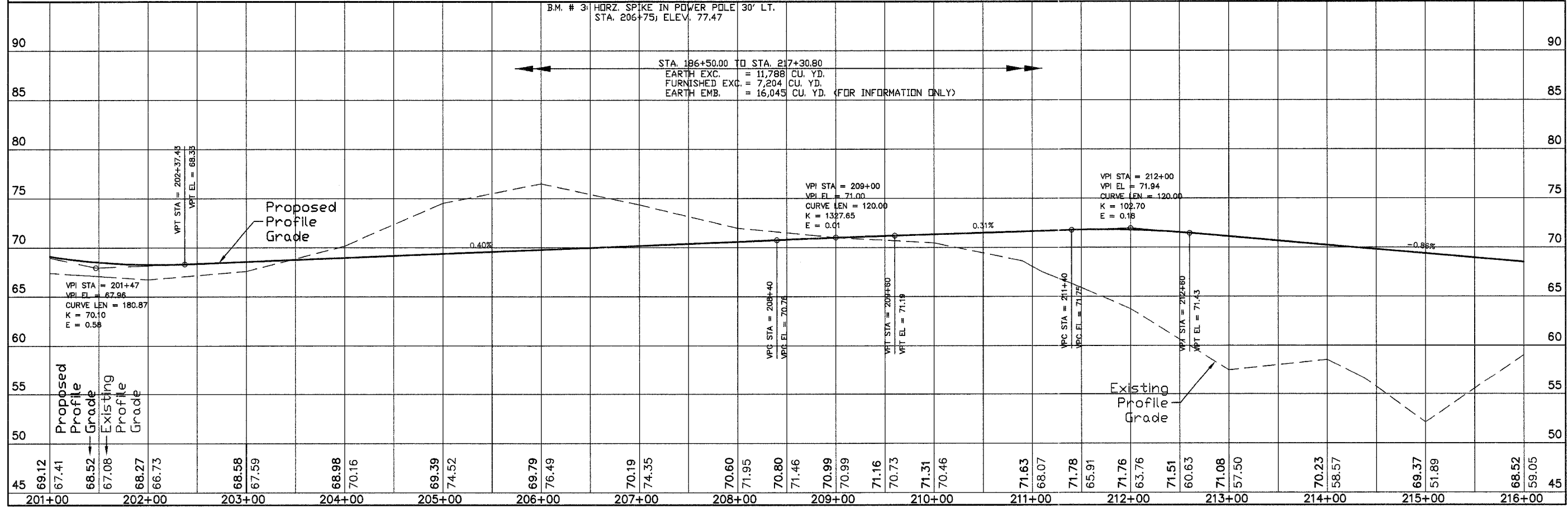
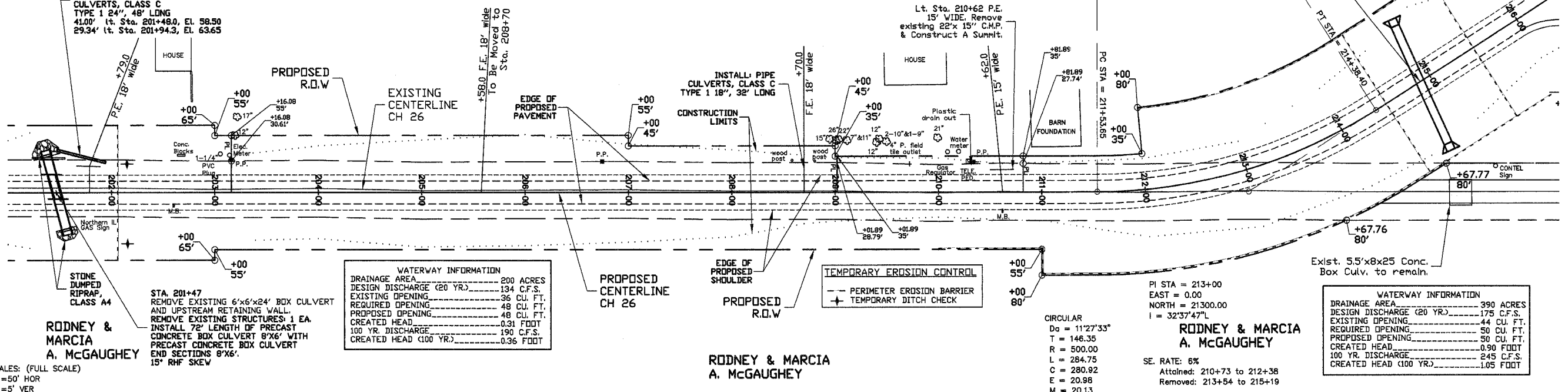
CECIL JR. & IOLA SHIPMAN

CECIL JR. & IOLA SHIPMAN

CARDL MARIE & PHILLIP PAUL KNOCHE

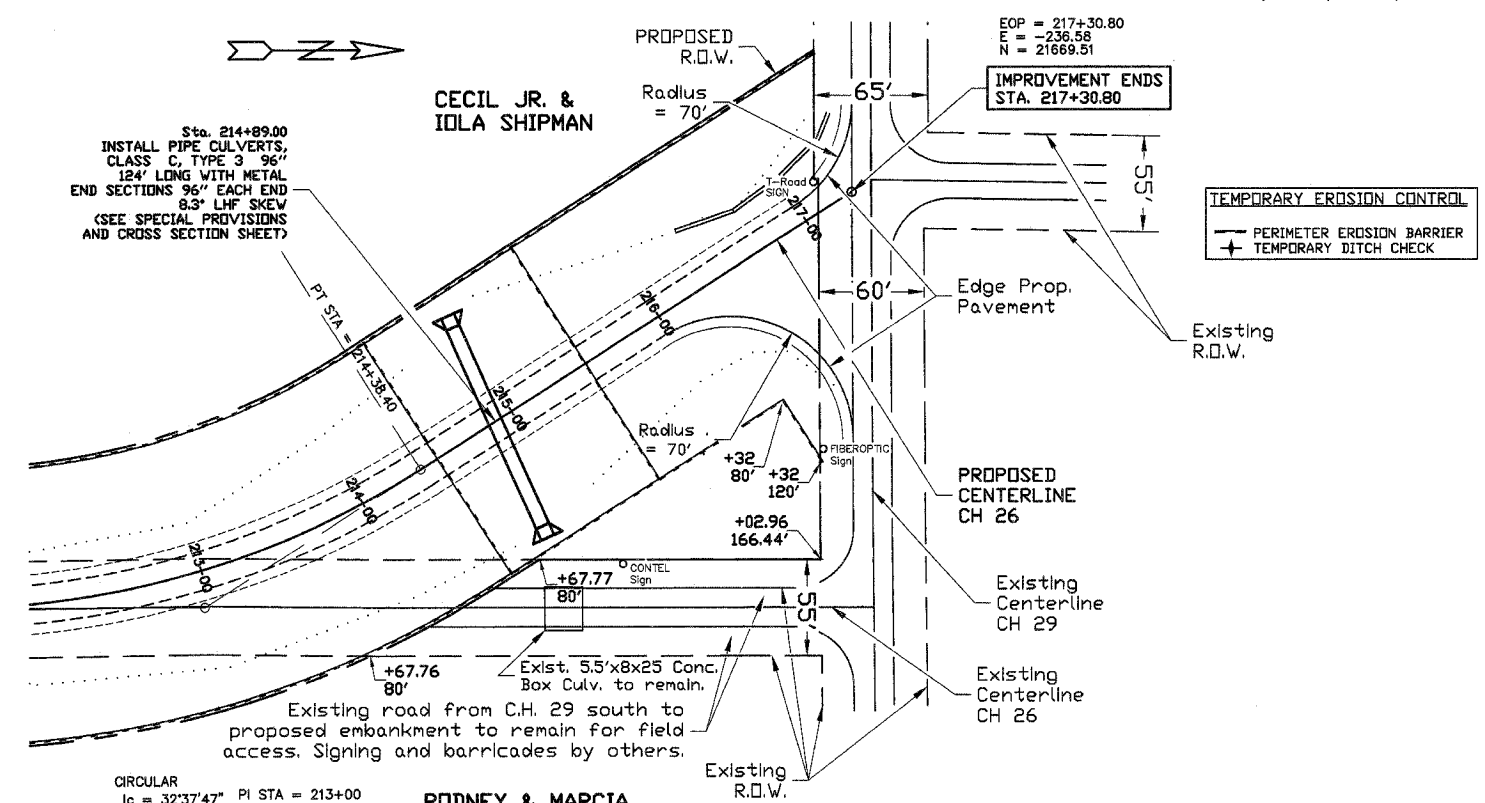
CECIL JR. & IOLA SHIPMAN

Sta. 214+89.00
INSTALL PIPE CULVERTS, CLASS C, TYPE 3 96" 124' LONG WITH METAL END SECTIONS 96" EACH END 8.3' LHF SKEW (SEE SPECIAL PROVISIONS AND CROSS SECTION SHEET)



ROUTE NO.	SECTION	COUNTY	TOTAL SHEETS	SHEET NO.
F.A.S. 1425	99-00103-00-PP	HANCOCK	11	6
F.H.W.A. REG. NO. 4		ILLINOIS		PROJECT

Sec. 4, T.5 N., R.7 W., 4th P.M.



Sec. 3, T.5 N., R.7 W., 4th P.M.

CIRCULAR
 $I_c = 32'37.47''$ PI STA = 213+00
 $D_a = 11'27.33''$ E = 0.00
 N = 21300.00
 $I = 32'37.47''$
 SCALES:
 1" = 50' HOR (FULL SIZE)
 1" = 5' VER

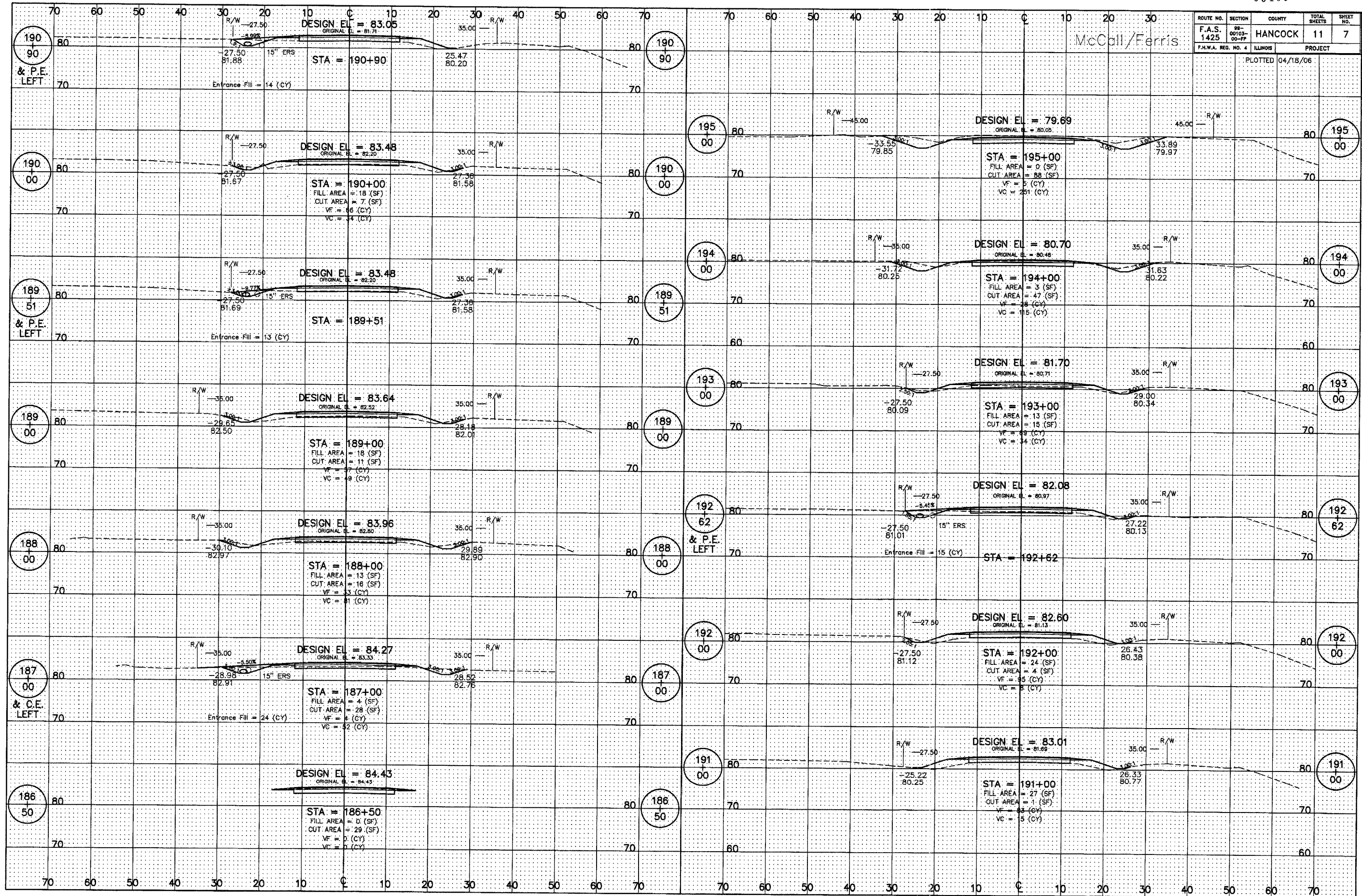
RODNEY & MARCIA
 A. MCGAUGHEY

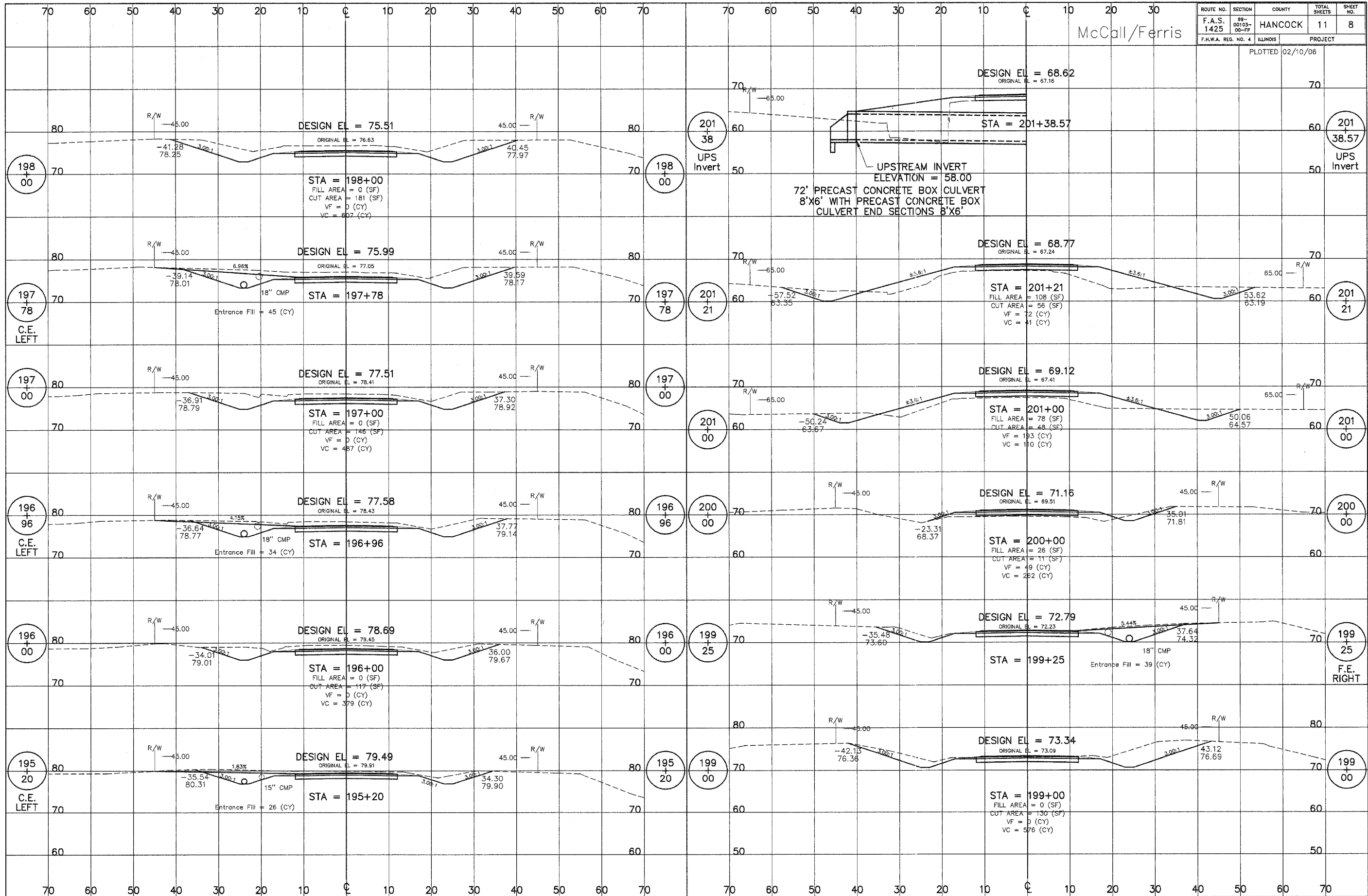


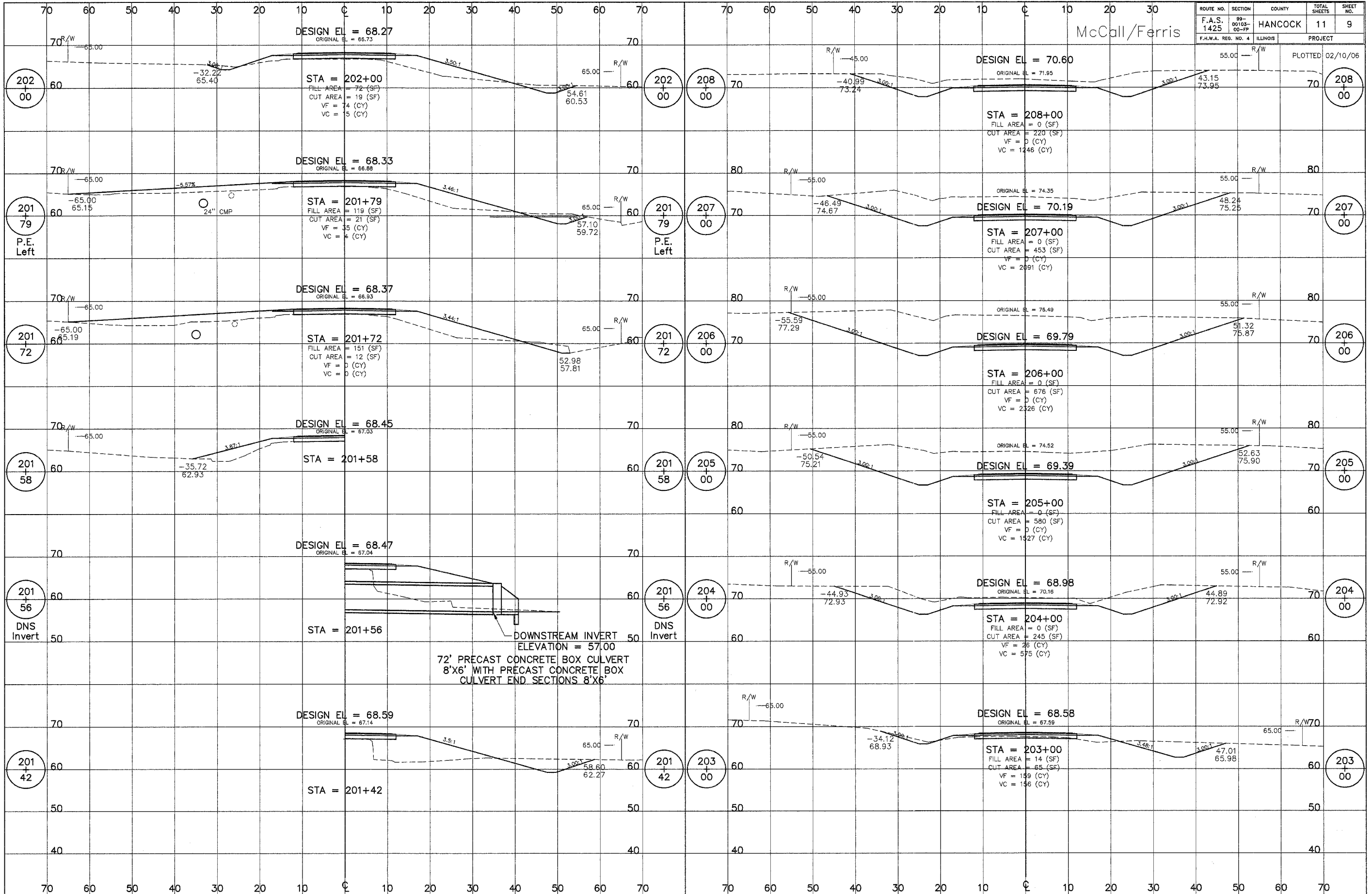
McCall/Ferris

ROUTE NO.	SECTION	COUNTY	TOTAL SHEETS	SHEET NO.
F.A.S. 1425	98-00103-00-FF	HANCOCK	11	7
F.H.W.A. REG. NO. 4	ILLINOIS	PROJECT		

PLOTTED 04/18/06







ROUTE NO.	SECTION	COUNTY	TOTAL SHEETS	SHEET NO.
F.A.S. 1425	99-00103-00-FP	HANCOCK	11	9
F.H.W.A. REG. NO. 4		ILLINOIS	PROJECT	

McCall/Ferris

PLOTTED 02/10/06

DESIGN EL = 68.27
ORIGINAL EL = 66.73

STA = 202+00
FILL AREA = 72 (SF)
CUT AREA = 19 (SF)
VF = 74 (CY)
VC = 5 (CY)

DESIGN EL = 70.60
ORIGINAL EL = 71.95

STA = 208+00
FILL AREA = 0 (SF)
CUT AREA = 220 (SF)
VF = 0 (CY)
VC = 1246 (CY)

DESIGN EL = 68.33
ORIGINAL EL = 66.88

STA = 201+79
FILL AREA = 119 (SF)
CUT AREA = 21 (SF)
VF = 35 (CY)
VC = 4 (CY)

DESIGN EL = 70.19
ORIGINAL EL = 74.35

STA = 207+00
FILL AREA = 0 (SF)
CUT AREA = 453 (SF)
VF = 0 (CY)
VC = 2091 (CY)

DESIGN EL = 68.37
ORIGINAL EL = 66.93

STA = 201+72
FILL AREA = 151 (SF)
CUT AREA = 12 (SF)
VF = 0 (CY)
VC = 0 (CY)

DESIGN EL = 69.79
ORIGINAL EL = 78.49

STA = 206+00
FILL AREA = 0 (SF)
CUT AREA = 676 (SF)
VF = 0 (CY)
VC = 2326 (CY)

DESIGN EL = 68.45
ORIGINAL EL = 67.03

STA = 201+58

DESIGN EL = 69.39
ORIGINAL EL = 74.52

STA = 205+00
FILL AREA = 0 (SF)
CUT AREA = 580 (SF)
VF = 0 (CY)
VC = 1527 (CY)

DESIGN EL = 68.47
ORIGINAL EL = 67.04

STA = 201+56

DESIGN EL = 68.98
ORIGINAL EL = 70.16

STA = 204+00
FILL AREA = 0 (SF)
CUT AREA = 245 (SF)
VF = 26 (CY)
VC = 575 (CY)

DESIGN EL = 68.59
ORIGINAL EL = 67.14

STA = 201+42

DESIGN EL = 68.58
ORIGINAL EL = 67.59

STA = 203+00
FILL AREA = 14 (SF)
CUT AREA = 65 (SF)
VF = 159 (CY)
VC = 156 (CY)

DOWNSTREAM INVERT
ELEVATION = 57.00
72' PRECAST CONCRETE BOX CULVERT
8'x6' WITH PRECAST CONCRETE BOX
CULVERT END SECTIONS 8'x6'

201+79
P.E. Left

201+79
P.E. Left

201+56
DNS Invert

201+56
DNS Invert

201+42

208+00

207+00

206+00

205+00

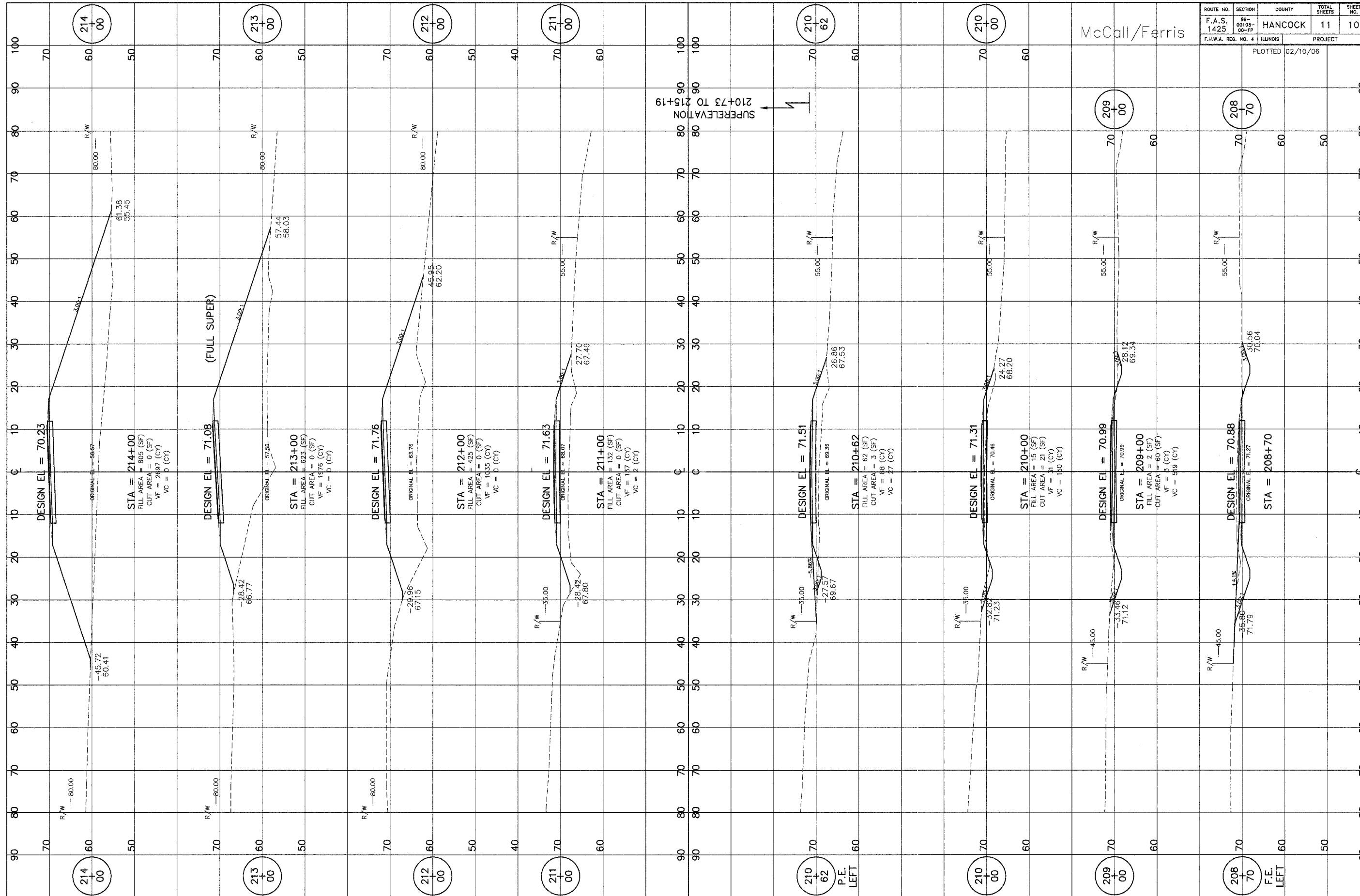
204+00

203+00

ROUTE NO. F.A.S. 1425	SECTION 99- 00103- 00-FP	COUNTY HANCOCK	TOTAL SHEETS 11	SHEET NO. 10
F.H.W.A. REG. NO. 4		ILLINOIS PROJECT		

PLOTTED 02/10/06

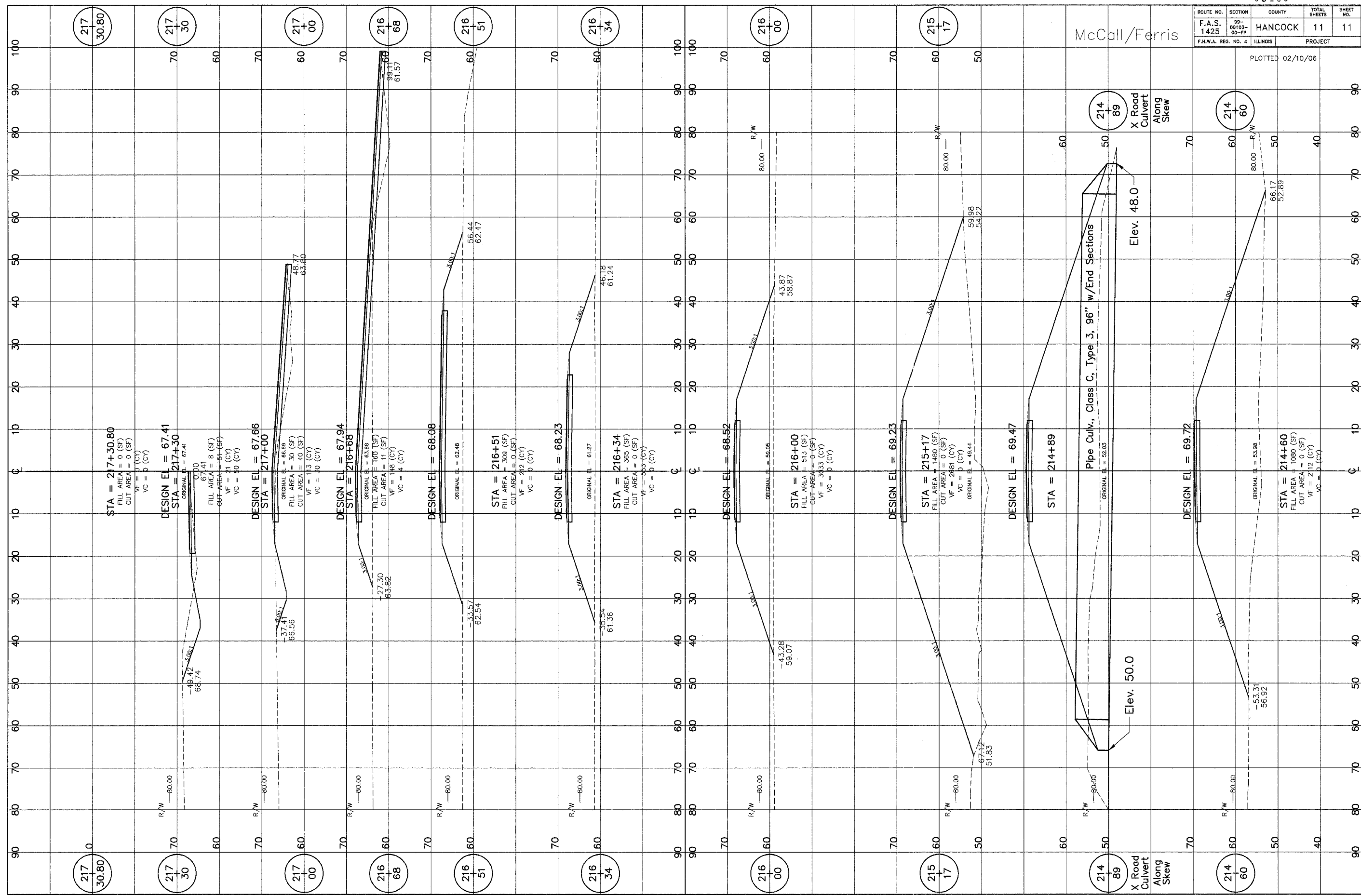
McCall/Ferris



ROUTE NO.	SECTION	COUNTY	TOTAL SHEETS	SHEET NO.
F.A.S. 1425	93-00103-00-FP	HANCOCK	11	11
F.H.W.A. REG. NO. 4	ILLINOIS	PROJECT		

PLOTTED 02/10/06

McCall/Ferris



STA = 217+30.80
 FILL AREA = 0 (SF)
 CUT AREA = 0 (SF)
 VF = 0 (CY)
 VC = 0 (CY)

DESIGN EL = 67.41
 STA = 217+30
 ORIGINAL EL = 67.41

FILL AREA = 8 (SF)
 CUT AREA = 51 (SF)
 VF = 21 (CY)
 VC = 30 (CY)

DESIGN EL = 67.66
 STA = 217+00

ORIGINAL EL = 66.69
 FILL AREA = 30 (SF)
 CUT AREA = 40 (SF)
 VF = 13 (CY)
 VC = 30 (CY)

DESIGN EL = 67.94
 STA = 216+68

ORIGINAL EL = 63.88
 FILL AREA = 160 (SF)
 CUT AREA = 11 (SF)
 VF = 148 (CY)
 VC = 4 (CY)

DESIGN EL = 68.08

ORIGINAL EL = 62.48

STA = 216+51
 FILL AREA = 309 (SF)
 CUT AREA = 0 (SF)
 VF = 242 (CY)
 VC = 0 (CY)

DESIGN EL = 68.23

ORIGINAL EL = 61.27

STA = 216+34
 FILL AREA = 365 (SF)
 CUT AREA = 0 (SF)
 VF = 533 (CY)
 VC = 0 (CY)

DESIGN EL = 68.52

ORIGINAL EL = 59.05

STA = 216+00
 FILL AREA = 513 (SF)
 CUT AREA = 0 (SF)
 VF = 3433 (CY)
 VC = 0 (CY)

DESIGN EL = 69.23

ORIGINAL EL = 49.44

STA = 215+17
 FILL AREA = 1480 (SF)
 CUT AREA = 0 (SF)
 VF = 2481 (CY)
 VC = 0 (CY)

DESIGN EL = 69.47

ORIGINAL EL = 52.03

STA = 214+89

FILL AREA = 1080 (SF)
 CUT AREA = 0 (SF)
 VF = 2112 (CY)
 VC = 0 (CY)

DESIGN EL = 69.72

ORIGINAL EL = 53.98

STA = 214+60

FILL AREA = 1080 (SF)
 CUT AREA = 0 (SF)
 VF = 2112 (CY)
 VC = 0 (CY)

DESIGN EL = 69.72

ORIGINAL EL = 53.98

214 60

214 60

214 89

214 89

215 17

215 17

216 00

216 00

216 34

216 34

216 51

216 51

217 00

217 00

217 30

217 30

217 80

217 80

McCall/Ferris

Pipe Culv., Class C, Type 3, 96" w/End Sections

X Road Culvert Along Skew

X Road Culvert Along Skew

Elev. 48.0

Elev. 50.0

Elev. 66.17

Elev. 53.31

214 89

214 89

214 60

214 60

PLOTTED 02/10/06