

SEC 36, T 1 N, R 2 W, 4TH PM

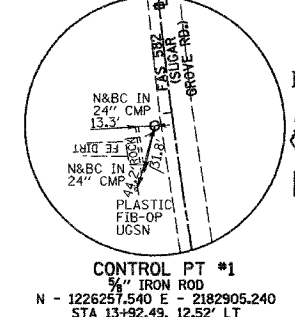
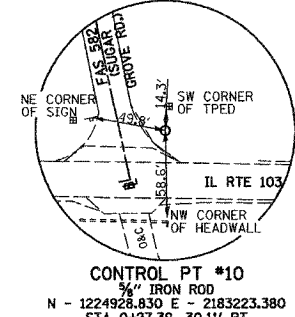
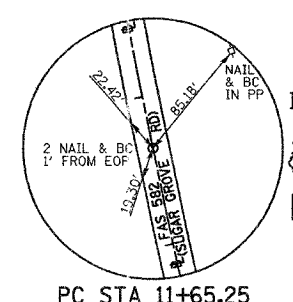
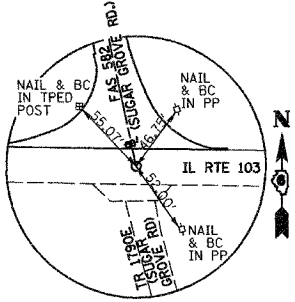
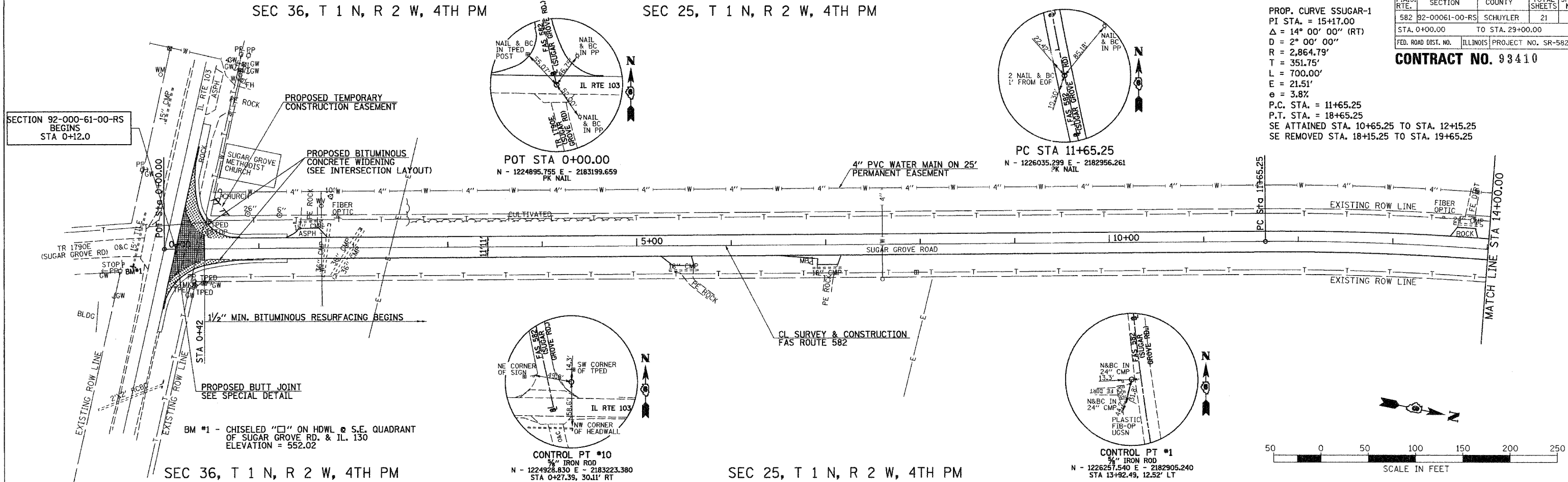
SEC 25, T 1 N, R 2 W, 4TH PM

F.A.S. RTE.	SECTION	COUNTY	TOTAL SHEETS	SHEET NO.
582	92-00061-00-RS	SCHUYLER	21	6
STA. 0+00.00		TO STA. 29+00.00		
FED. ROAD DIST. NO.		ILLINOIS PROJECT NO. SR-582(115)		

CONTRACT NO. 93410

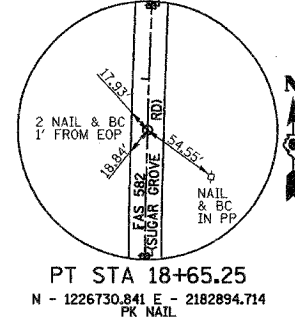
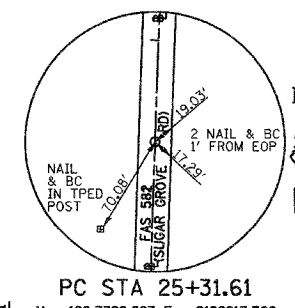
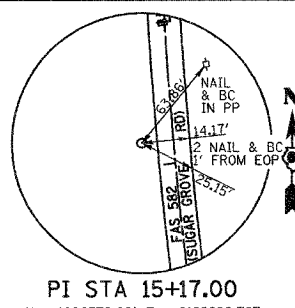
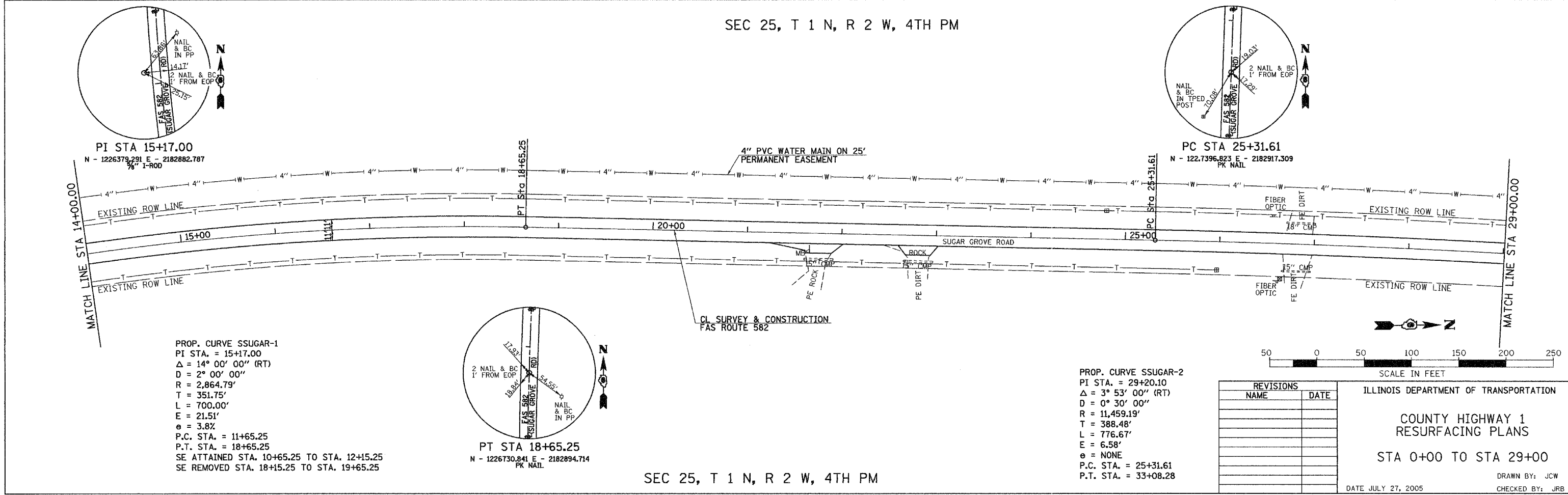
PROP. CURVE SSUGAR-1  
 PI STA. = 15+17.00  
 $\Delta = 14^\circ 00' 00''$  (RT)  
 $D = 2^\circ 00' 00''$   
 $R = 2,864.79'$   
 $T = 351.75'$   
 $L = 700.00'$   
 $E = 21.51'$   
 $e = 3.8\%$   
 P.C. STA. = 11+65.25  
 P.T. STA. = 18+65.25  
 SE ATTAINED STA. 10+65.25 TO STA. 12+15.25  
 SE REMOVED STA. 18+15.25 TO STA. 19+65.25

SECTION 92-000-61-00-RS BEGINS STA 0+12.0



SEC 25, T 1 N, R 2 W, 4TH PM

SEC 25, T 1 N, R 2 W, 4TH PM



PROP. CURVE SSUGAR-2  
 PI STA. = 29+20.10  
 $\Delta = 3^\circ 53' 00''$  (RT)  
 $D = 0^\circ 30' 00''$   
 $R = 11,459.19'$   
 $T = 388.48'$   
 $L = 776.67'$   
 $E = 6.58'$   
 $e = \text{NONE}$   
 P.C. STA. = 25+31.61  
 P.T. STA. = 33+08.28

SEC 25, T 1 N, R 2 W, 4TH PM

REVISIONS	
NAME	DATE

ILLINOIS DEPARTMENT OF TRANSPORTATION  
 COUNTY HIGHWAY 1  
 RESURFACING PLANS  
 STA 0+00 TO STA 29+00  
 DATE JULY 27, 2005  
 DRAWN BY: JCW  
 CHECKED BY: JRB