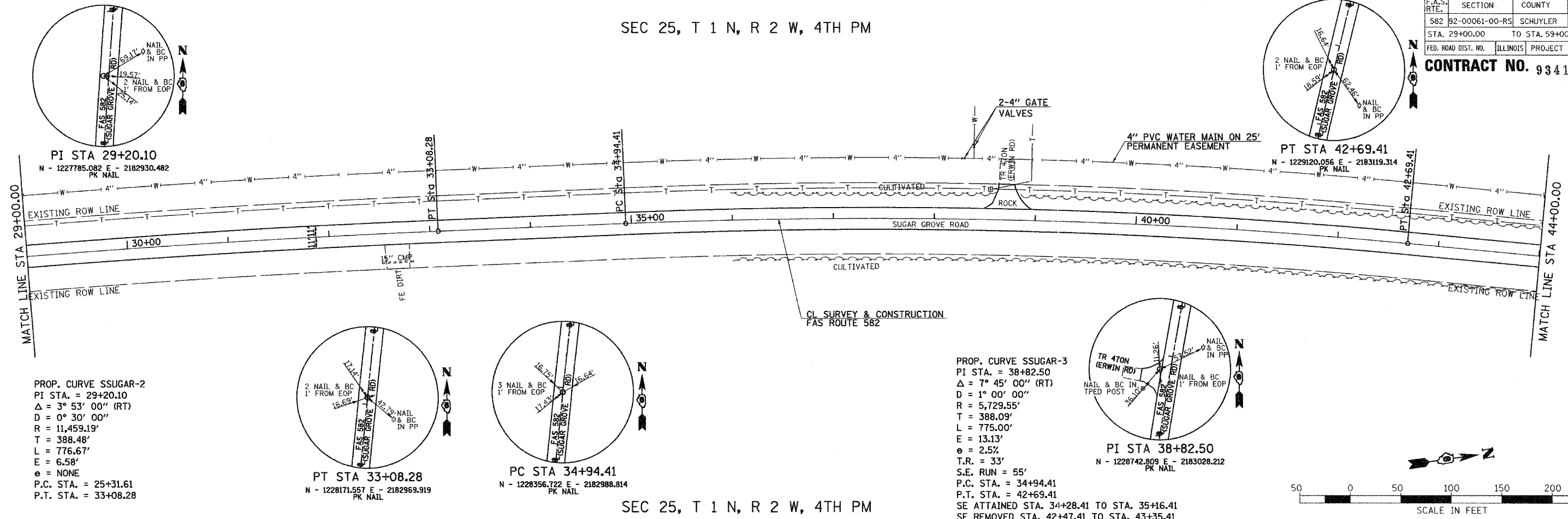


F.A.S. RTE.	SECTION	COUNTY	TOTAL SHEETS	SHEET NO.
582	92-00061-00-RS	SCHUYLER	21	7
STA. 29+00.00		TO STA. 59+00.00		
FED. ROAD DIST. NO.	ILLINOIS	PROJECT NO. SR-582(115)		

CONTRACT NO. 93410

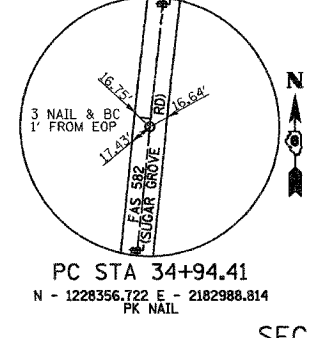
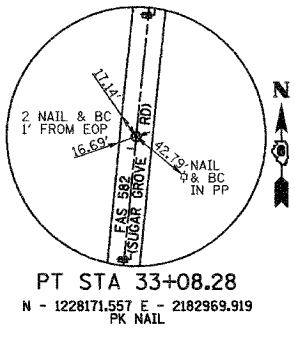
SEC 25, T 1 N, R 2 W, 4TH PM



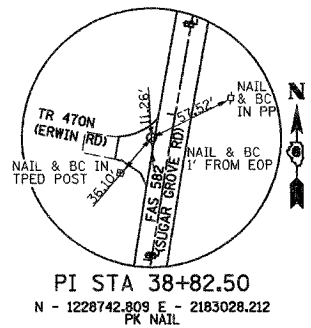
PI STA 29+20.10
N - 1227785.082 E - 2182930.482
PK NAIL

PT STA 42+69.41
N - 1229120.056 E - 2183119.314
PK NAIL

PROP. CURVE SSUGAR-2
PI STA. = 29+20.10
 $\Delta = 3^\circ 53' 00''$ (RT)
D = $0^\circ 30' 00''$
R = 11,459.19'
T = 388.48'
L = 776.67'
E = 6.58'
e = NONE
P.C. STA. = 25+31.61
P.T. STA. = 33+08.28



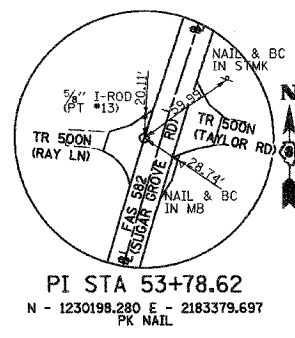
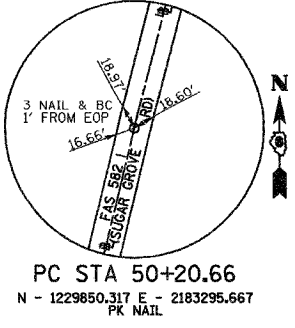
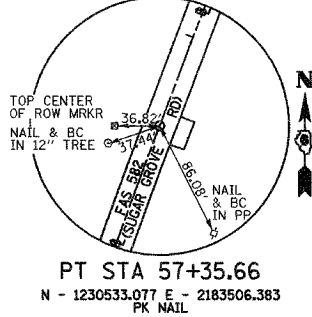
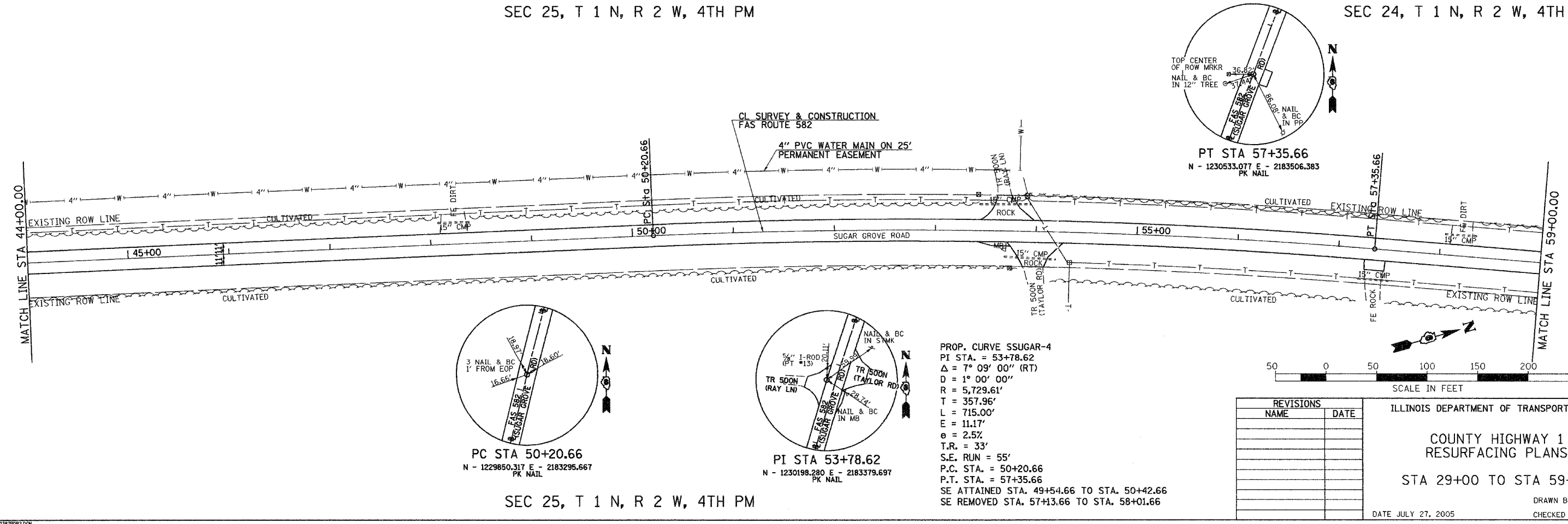
PROP. CURVE SSUGAR-3
PI STA. = 38+82.50
 $\Delta = 7^\circ 45' 00''$ (RT)
D = $1^\circ 00' 00''$
R = 5,729.55'
T = 388.09'
L = 775.00'
E = 13.13'
e = 2.5%
T.R. = 33'
S.E. RUN = 55'
P.C. STA. = 34+94.41
P.T. STA. = 42+69.41
SE ATTAINED STA. 34+28.41 TO STA. 35+16.41
SE REMOVED STA. 42+47.41 TO STA. 43+35.41



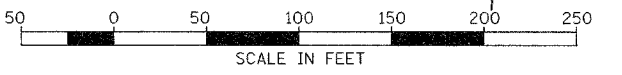
SEC 25, T 1 N, R 2 W, 4TH PM

SEC 25, T 1 N, R 2 W, 4TH PM

SEC 24, T 1 N, R 2 W, 4TH PM



PROP. CURVE SSUGAR-4
PI STA. = 53+78.62
 $\Delta = 7^\circ 09' 00''$ (RT)
D = $1^\circ 00' 00''$
R = 5,729.61'
T = 357.96'
L = 715.00'
E = 11.17'
e = 2.5%
T.R. = 33'
S.E. RUN = 55'
P.C. STA. = 50+20.66
P.T. STA. = 57+35.66
SE ATTAINED STA. 49+54.66 TO STA. 50+42.66
SE REMOVED STA. 57+13.66 TO STA. 58+01.66



REVISIONS	
NAME	DATE

ILLINOIS DEPARTMENT OF TRANSPORTATION
**COUNTY HIGHWAY 1
RESURFACING PLANS**
STA 29+00 TO STA 59+00
DRAWN BY: JCW
CHECKED BY: JRB
DATE JULY 27, 2005

SEC 25, T 1 N, R 2 W, 4TH PM