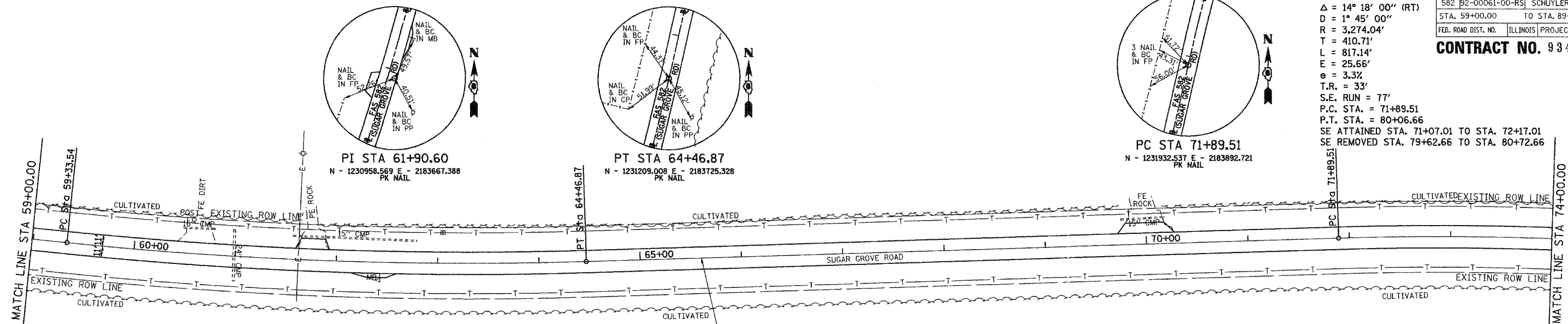


SEC 24, T 1 N, R 2 W, 4TH PM

F.A.S. RTE.	SECTION	COUNTY	TOTAL SHEETS	SHEET NO.
582	92-00061-00-RS	SCHUYLER	21	8
STA. 59+00.00		TO STA. 89+00.00		
FED. ROAD DIST. NO.		ILLINOIS PROJECT NO. SR-582(115)		

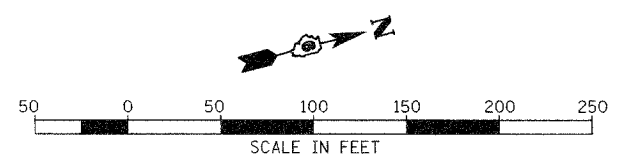
CONTRACT NO. 93410



PROP. CURVE SSUGAR-6
 PI STA. = 76+00.22
 $\Delta = 14^\circ 18' 00''$ (RT)
 $D = 1^\circ 45' 00''$
 $R = 3,274.04'$
 $T = 410.71'$
 $L = 817.14'$
 $E = 25.66'$
 $e = 3.3\%$
 $T.R. = 33'$
 $S.E. RUN = 77'$
 $P.C. STA. = 71+89.51$
 $P.T. STA. = 80+06.66$
 SE ATTAINED STA. 71+07.01 TO STA. 72+17.01
 SE REMOVED STA. 79+62.66 TO STA. 80+72.66

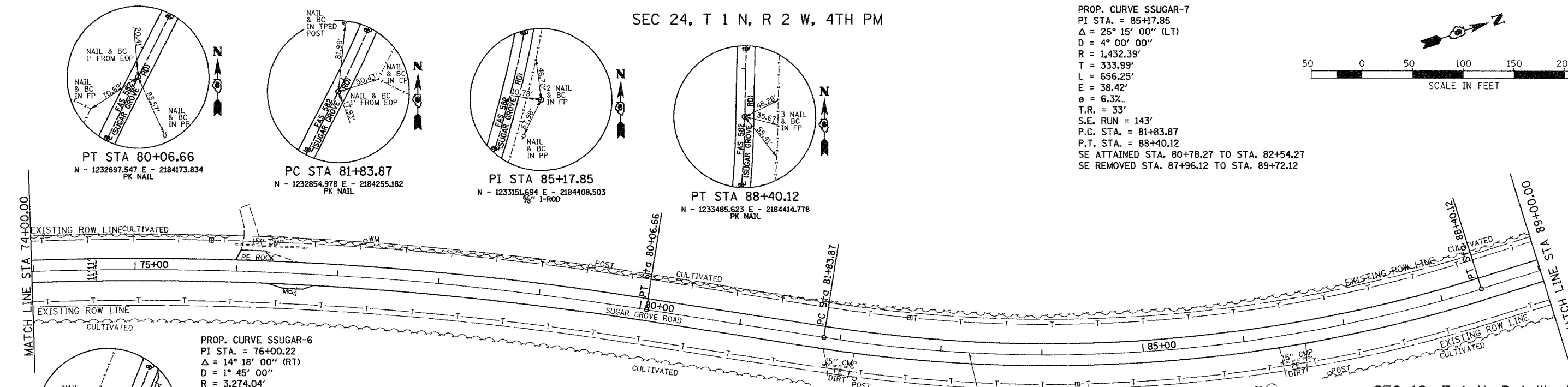
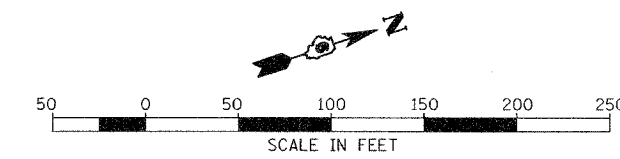
PROP. CURVE SSUGAR-5
 PI STA. = 61+90.60
 $\Delta = 7^\circ 42' 00''$ (LT)
 $D = 1^\circ 30' 00''$
 $R = 3,819.72'$
 $T = 257.05'$
 $L = 513.33'$
 $E = 8.64'$
 $e = 3.5\%$ (CORRECTED FROM 2.5%)
 $T.R. = 33'$
 $S.E. RUN = 77'$
 $P.C. STA. = 59+33.54$
 $P.T. STA. = 64+46.87$
 SE ATTAINED STA. 58+51.04 TO STA. 59+64.04
 SE REMOVED STA. 64+19.37 TO STA. 65+29.37

SEC 24, T 1 N, R 2 W, 4TH PM



SEC 24, T 1 N, R 2 W, 4TH PM

PROP. CURVE SSUGAR-7
 PI STA. = 85+17.85
 $\Delta = 26^\circ 15' 00''$ (LT)
 $D = 4^\circ 00' 00''$
 $R = 1,432.39'$
 $T = 333.99'$
 $L = 656.25'$
 $E = 38.42'$
 $e = 6.3\%$
 $T.R. = 33'$
 $S.E. RUN = 143'$
 $P.C. STA. = 81+83.87$
 $P.T. STA. = 88+40.12$
 SE ATTAINED STA. 80+78.27 TO STA. 82+54.27
 SE REMOVED STA. 87+96.12 TO STA. 89+72.12



PROP. CURVE SSUGAR-6
 PI STA. = 76+00.22
 $\Delta = 14^\circ 18' 00''$ (RT)
 $D = 1^\circ 45' 00''$
 $R = 3,274.04'$
 $T = 410.71'$
 $L = 817.14'$
 $E = 25.66'$
 $e = 3.3\%$
 $T.R. = 33'$
 $S.E. RUN = 77'$
 $P.C. STA. = 71+89.51$
 $P.T. STA. = 80+06.66$
 SE ATTAINED STA. 71+07.01 TO STA. 72+17.01
 SE REMOVED STA. 79+62.66 TO STA. 80+72.66

SEC 24, T 1 N, R 2 W, 4TH PM

SEC 19, T 1 N, R 1 W, 4TH PM

REVISIONS	
NAME	DATE

ILLINOIS DEPARTMENT OF TRANSPORTATION
 COUNTY HIGHWAY 1
 RESURFACING PLANS
 STA 59+00 TO STA 89+00
 DATE JULY 27, 2005
 DRAWN BY: JCW
 CHECKED BY: JRB

V:\2381\PROJ\REP_SHTS\2381R03.DWG