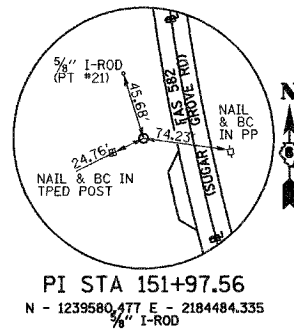
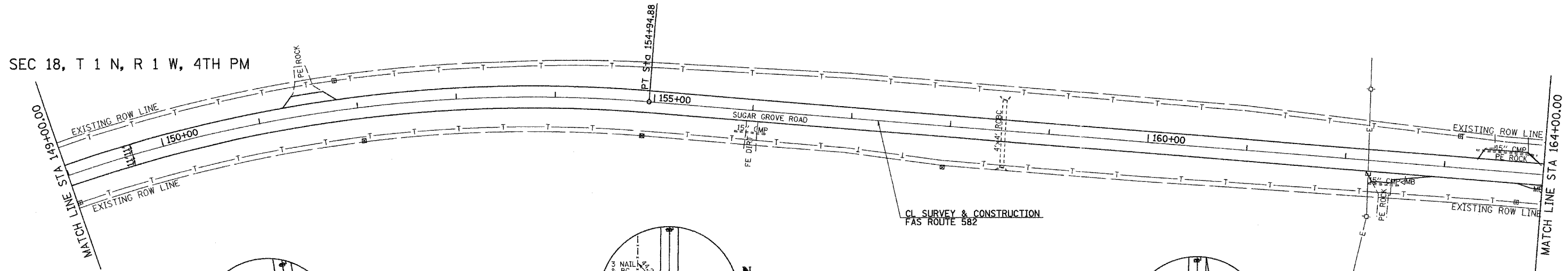


SEC 13, T 1 N, R 2 W, 4TH PM

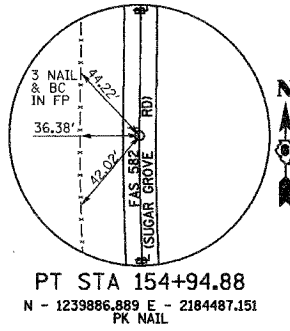
| F.A.S. RTE.         | SECTION                          | COUNTY            | TOTAL SHEETS | SHEET NO. |
|---------------------|----------------------------------|-------------------|--------------|-----------|
| 582                 | 92-00061-00-RS                   | SCHUYLER          | 21           | 11        |
| STA. 149+00.00      |                                  | TO STA. 179+00.00 |              |           |
| FED. ROAD DIST. NO. | ILLINOIS PROJECT NO. SR-582(115) |                   |              |           |

CONTRACT NO. 93410

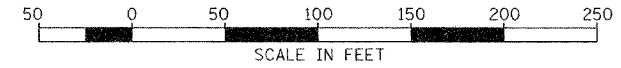
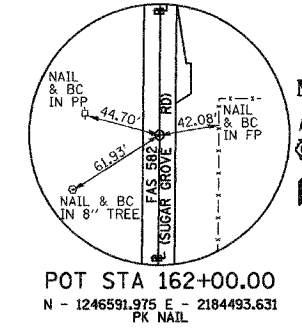
SEC 18, T 1 N, R 1 W, 4TH PM



PROP. CURVE SSUGAR-11  
 PI STA. = 151+97.56  
 $\Delta = 24^\circ 09' 00''$  (RT)  
 $D = 4^\circ 00' 00''$   
 $R = 1,432.39'$   
 $T = 306.43'$   
 $L = 603.75'$   
 $E = 32.41'$   
 $e = 6.3\%$   
 $T.R. = 33'$   
 $S.E. RUN = 143'$   
 $P.C. STA. = 148+91.13$   
 $P.T. STA. = 154+94.88$   
 $SE ATTAINED STA. 147+59.13 TO STA. 149+35.13$   
 $SE REMOVED STA. 154+50.88 TO STA. 156+26.88$

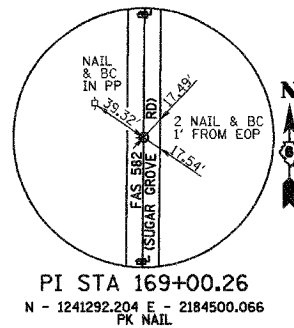
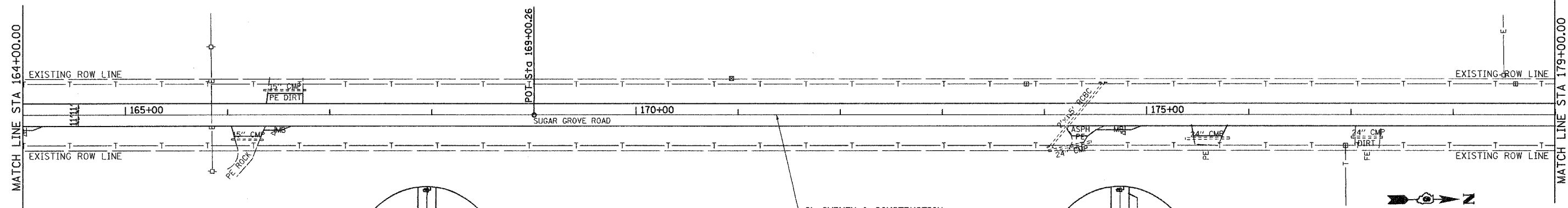


SEC 18, T 1 N, R 1 W, 4TH PM



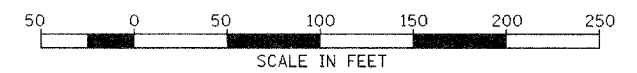
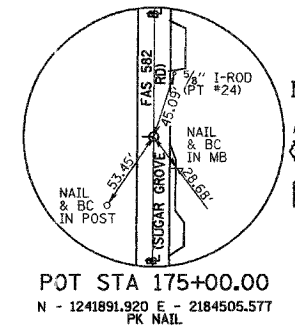
SEC 13, T 1 N, R 2 W, 4TH PM

SEC 12, T 1 N, R 2 W, 4TH PM



SEC 18, T 1 N, R 1 W, 4TH PM

SEC 7, T 1 N, R 1 W, 4TH PM



| REVISIONS |      |
|-----------|------|
| NAME      | DATE |
|           |      |
|           |      |
|           |      |
|           |      |
|           |      |
|           |      |
|           |      |
|           |      |
|           |      |
|           |      |

ILLINOIS DEPARTMENT OF TRANSPORTATION  
 COUNTY HIGHWAY 1  
 RESURFACING PLANS  
 STA 149+00 TO STA 179+00  
 DATE JULY 27, 2005  
 DRAWN BY: JCW  
 CHECKED BY: JRB