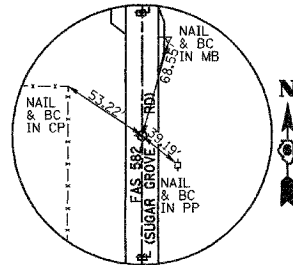


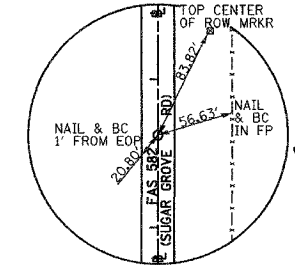
SEC 6, T 1 N, R 1 W, 4TH PM

F.A.S. RTE.	SECTION	COUNTY	TOTAL SHEETS	SHEET NO.
582	92-00061-00-RS	SCHUYLER	21	14
STA. 239+00.00		TO STA. 269+00.00		
FED. ROAD DIST. NO.		ILLINOIS PROJECT NO. SR-582(115)		

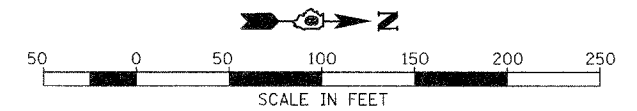
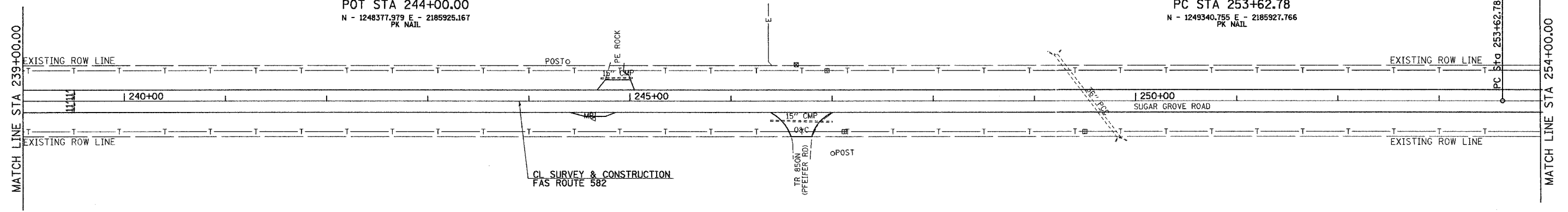
CONTRACT NO. 93410



POT STA 244+00.00
N - 1248377.379 E - 2185925.167
PK NAIL

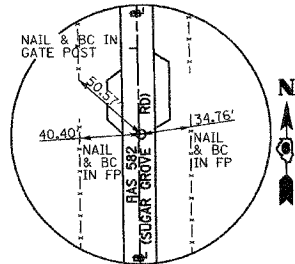


PC STA 253+62.78
N - 1249340.755 E - 2185927.766
PK NAIL

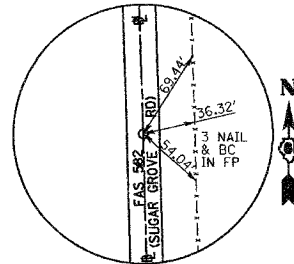


SEC 6, T 1 N, R 1 W, 4TH PM

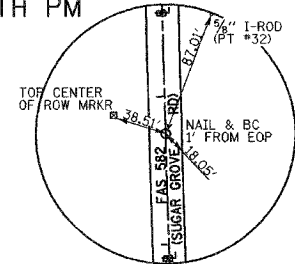
SEC 6, T 1 N, R 1 W, 4TH PM



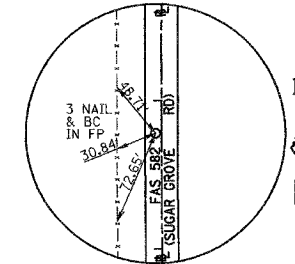
PI STA 255+41.91
N - 1249519.889 E - 2185928.250
PK NAIL



PT STA 257+21.02
N - 1249698.951 E - 2185923.135
PK NAIL

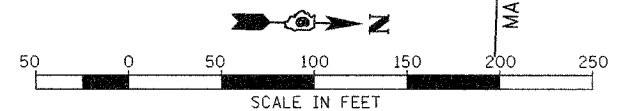
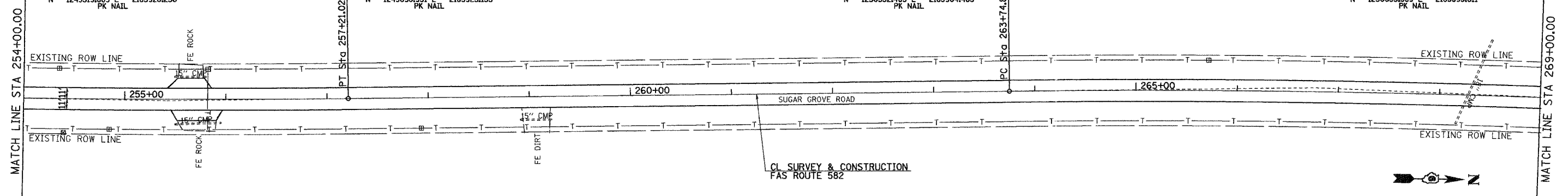


PC STA 263+74.80
N - 1250352.463 E - 2185904.465
PK NAIL



PI STA 266+77.85
N - 1250655.389 E - 2185895.811
PK NAIL

PROP. CURVE SSUGAR-18
PI STA. = 266+77.85
 $\Delta = 3^\circ 01' 46''$ (RT)
D = $0^\circ 30' 00''$
R = 11,460.00'
T = 303.05'
L = 605.96'
E = 4.01'
 $\phi =$ NONE
P.C. STA. = 263+74.80
P.T. STA. = 269+80.76



PROP. CURVE SSUGAR-17
PI STA. = 255+41.91
 $\Delta = 1^\circ 47' 28''$ (LT)
D = $0^\circ 30' 00''$
R = 11,460.00'
T = 179.13'
L = 358.24'
E = 1.40'
 $\phi =$ NONE
P.C. STA. = 253+62.78
P.T. STA. = 257+21.02

SEC 6, T 1 N, R 1 W, 4TH PM

REVISIONS	
NAME	DATE

ILLINOIS DEPARTMENT OF TRANSPORTATION

COUNTY HIGHWAY 1
RESURFACING PLANS

STA 239+00 TO STA 269+00

DRAWN BY: JCW
CHECKED BY: JRB
DATE JULY 27, 2005