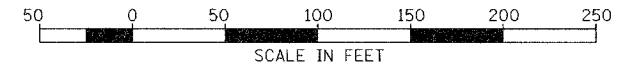
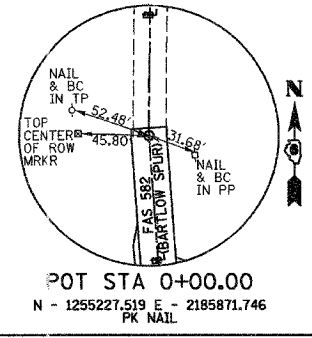
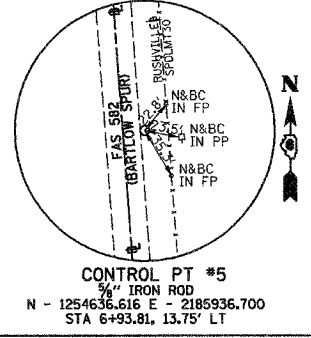
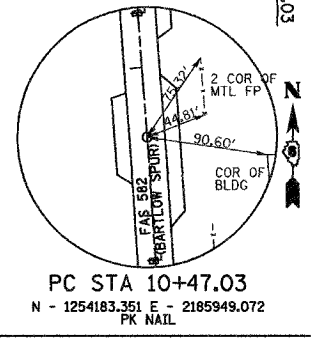
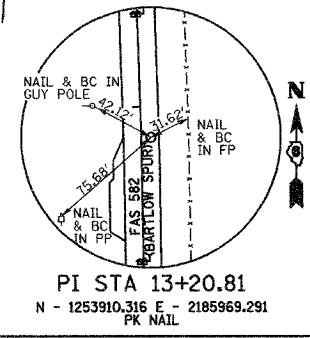
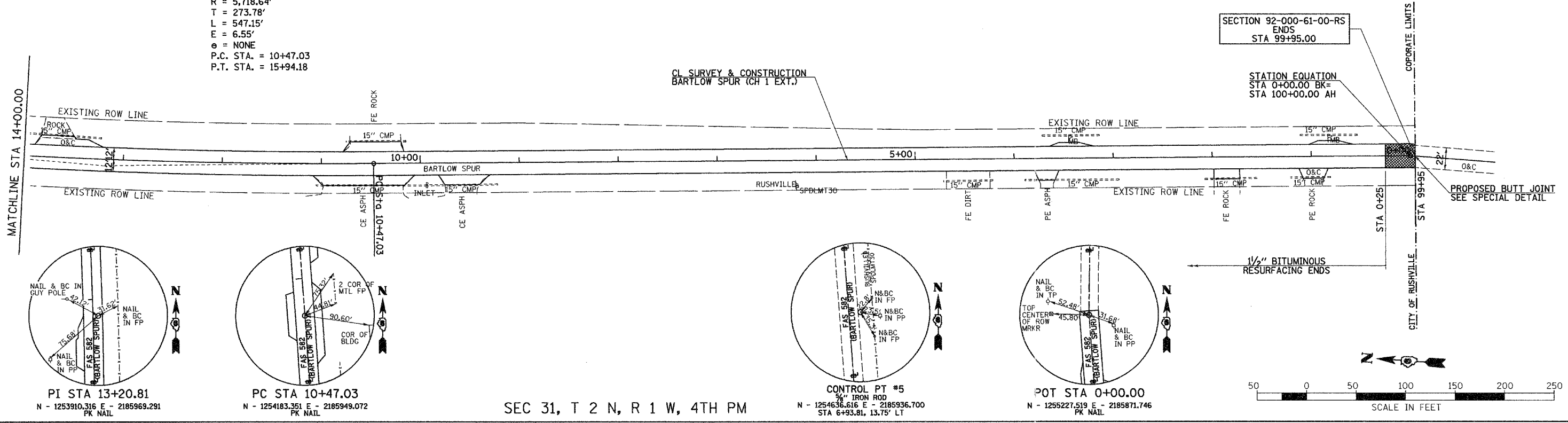


SEC 31, T 2 N, R 1 W, 4TH PM

F.A.S. RTE.	SECTION	COUNTY	TOTAL SHEETS	SHEET NO.
582	92-00061-00-RS	SCHUYLER	21	16
STA. 14+00.00		TO STA. 99+95.00		
FED. ROAD DIST. NO.		ILLINOIS	PROJECT NO. SR-582(115)	

CONTRACT NO. 93410

PROP. CURVE BARTLET-1  
 PI STA. = 13+20.81  
 $\Delta = 5^\circ 28' 55''$  (RT)  
 $D = 1^\circ 00' 07''$   
 $R = 5,718.64'$   
 $T = 273.78'$   
 $L = 547.15'$   
 $E = 6.55'$   
 $e = \text{NONE}$   
 P.C. STA. = 10+47.03  
 P.T. STA. = 15+94.18



SEC 31, T 2 N, R 1 W, 4TH PM

REVISIONS	
NAME	DATE

ILLINOIS DEPARTMENT OF TRANSPORTATION  
 COUNTY HIGHWAY 1  
 RESURFACING PLANS  
 STA 14+00 TO STA 99+95  
 DATE JULY 27, 2005  
 DRAWN BY: JCW  
 CHECKED BY: JRB

W:\2387\PROJ\REP SHTS\2387P011.DGN

W:\2387\PROJ\REP SHTS\2387P011.DGN 02/16/2005 08:14:25 AM