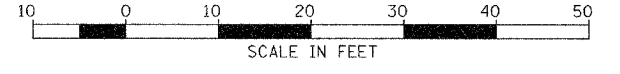


| F.A.S. RTE. | SECTION | COUNTY | TOTAL SHEETS | SHEET NO. |
|---------------------|----------------|----------|-------------------------|-----------|
| 582 | 92-00061-00-RS | SCHUYLER | 21 | 17 |
| FED. ROAD DIST. NO. | | ILLINOIS | PROJECT NO. SR-582(115) | |

CONTRACT NO. 93410

| PT | STATION | OFFSET | ELEVATION | NORTHING | EASTING |
|----|---------|-----------|-----------|------------|------------|
| A1 | 0+34.15 | 93.35' LT | 552.55 | 1224909.67 | 2183101.18 |
| A2 | 0+33.02 | 78.23' LT | 552.37 | 1224911.72 | 2173116.22 |
| A3 | 0+33.43 | 63.08' LT | 552.20 | 1224915.27 | 2183130.98 |
| A4 | 0+40.73 | 33.40' LT | 551.84 | 1224928.61 | 2183158.49 |
| A5 | 0+50.78 | 21.48' LT | 551.80 | 1224940.93 | 2183168.05 |
| A6 | 0+64.29 | 13.70' LT | 551.87 | 1224955.77 | 2183172.83 |

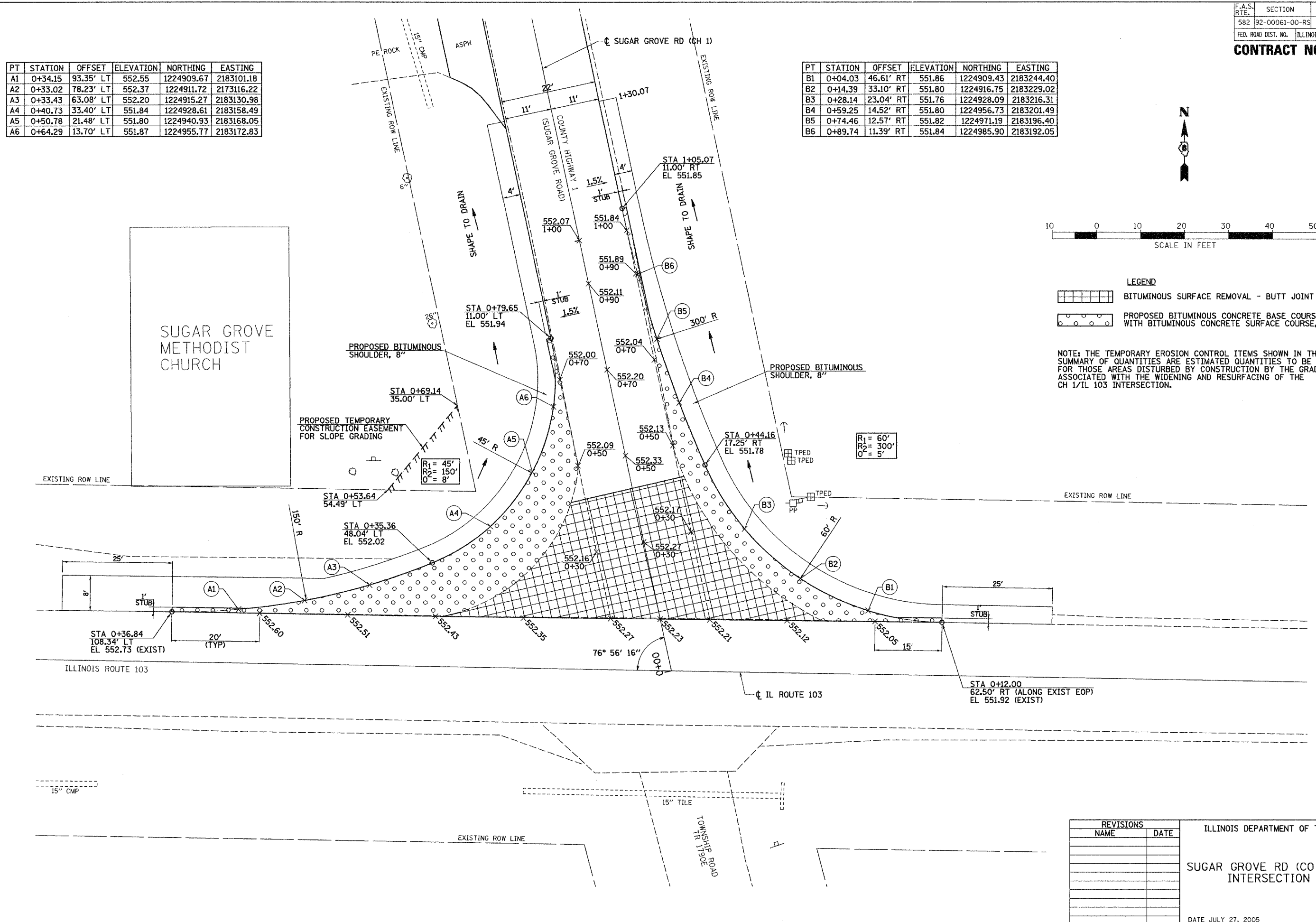
| PT | STATION | OFFSET | ELEVATION | NORTHING | EASTING |
|----|---------|-----------|-----------|------------|------------|
| B1 | 0+04.03 | 46.61' RT | 551.86 | 1224909.43 | 2183244.40 |
| B2 | 0+14.39 | 33.10' RT | 551.80 | 1224916.75 | 2183229.02 |
| B3 | 0+28.14 | 23.04' RT | 551.76 | 1224928.09 | 2183216.31 |
| B4 | 0+59.25 | 14.52' RT | 551.80 | 1224956.73 | 2183201.49 |
| B5 | 0+74.46 | 12.57' RT | 551.82 | 1224971.19 | 2183196.40 |
| B6 | 0+89.74 | 11.39' RT | 551.84 | 1224985.90 | 2183192.05 |



LEGEND

| | |
|--|--|
| | BITUMINOUS SURFACE REMOVAL - BUTT JOINT |
| | PROPOSED BITUMINOUS CONCRETE BASE COURSE, 8" WITH BITUMINOUS CONCRETE SURFACE COURSE, 2" |

NOTE: THE TEMPORARY EROSION CONTROL ITEMS SHOWN IN THE SUMMARY OF QUANTITIES ARE ESTIMATED QUANTITIES TO BE USED FOR THOSE AREAS DISTURBED BY CONSTRUCTION BY THE GRADING ASSOCIATED WITH THE WIDENING AND RESURFACING OF THE CH 1/IL 103 INTERSECTION.



| REVISIONS | |
|-----------|------|
| NAME | DATE |
| | |
| | |
| | |
| | |
| | |
| | |
| | |
| | |
| | |

ILLINOIS DEPARTMENT OF TRANSPORTATION

SUGAR GROVE RD (CO HWY 1)/IL 103 INTERSECTION DETAILS

DATE JULY 27, 2005

DRAWN BY: JCW
CHECKED BY: JRB