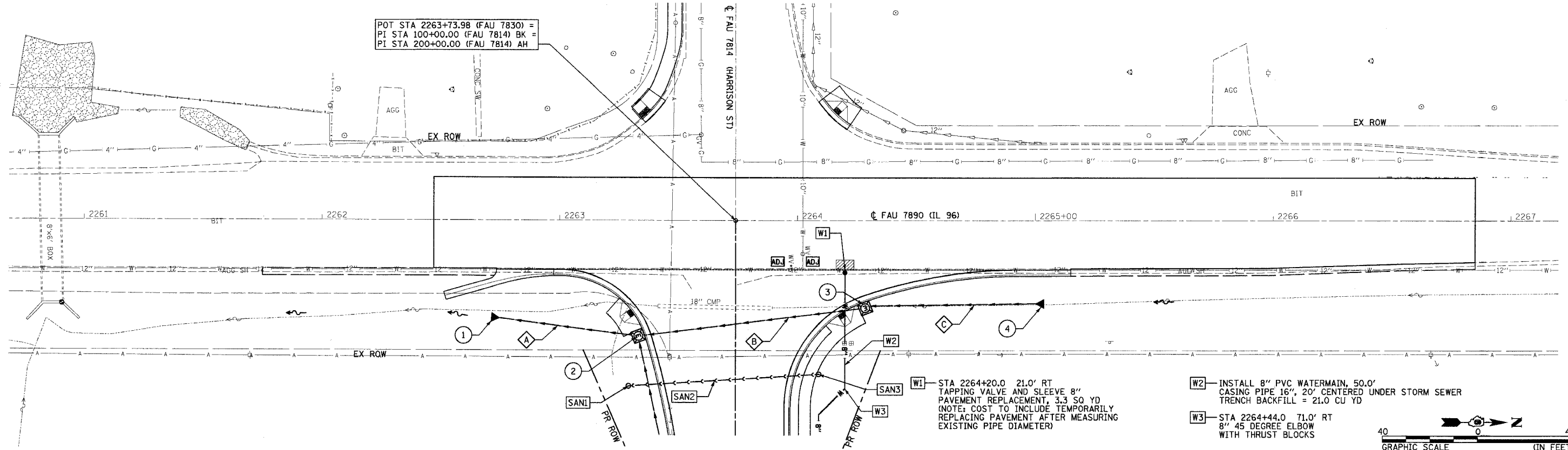


- ① STA 2262+75.0 41.6' RT  
PRECAST REINF CONC FLARED END  
SECTIONS 24" (STD 542301)  
ELEV = 651.70
- ② STA 2263+33.2 49.0' RT  
INLETS, SPECIAL, TYPE E  
TOP CURB = 657.21  
INV ELEV = 652.00
- ③ STA 2264+27.6 34.7' RT  
INLETS, SPECIAL, TYPE E  
TOP CURB = 657.09  
INV ELEV = 652.40
- ④ STA 2265+00.0 38.2' RT  
PRECAST REINF CONC FLARED END  
SECTIONS 24" (STD 542301)  
ELEV = 654.50
- [SAN1] STA 200+70.0 45.0' RT  
MH, SANITARY, 4'-Ø, TY 1 FR, CLSD LID  
TOP LID = 657.40  
INV ELEV = 644.20
- [SAN2] SANITARY SEWER, TYPE 3 8", 80.0'  
USFL = 645.00 DSFL = 644.20  
SLOPE = 1.00%  
TRENCH BACKFILL = 105.1 CU YD
- [SAN3] STA 200+65.0 35.0' LT  
MH, SANITARY, 4'-Ø, TY 1 FR, CLSD LID  
TOP LID = 657.60  
INV ELEV = 645.00
- ⬡ STORM SEWERS, CLASS A, TYPE 1 24", 56'  
USFL = 652.00 DSFL = 651.70  
SLOPE = 0.54%  
TRENCH BACKFILL = 4.5 CU YD
- ⬡ STORM SEWERS, CLASS A, TYPE 1 24", 92'  
USFL = 652.40 DSFL = 652.00  
SLOPE = 0.43%  
TRENCH BACKFILL = 14.9 CU YD
- ⬡ STORM SEWERS, CLASS A, TYPE 1 24", 70'  
USFL = 654.50 DSFL = 652.40  
SLOPE = 3.00%  
TRENCH BACKFILL = 1.8 CU YD

|                           |                |                           |              |           |
|---------------------------|----------------|---------------------------|--------------|-----------|
| FAU RTE.                  | SECTION        | COUNTY                    | TOTAL SHEETS | SHEET NO. |
| 7814                      | 05-00186-01-PV | ADAMS                     | 78           | 26        |
| STA. _____                |                | TO STA. _____             |              |           |
| FED. ROAD DIST. NO. _____ |                | ILLINOIS FED. AID PROJECT |              |           |

PLAN  
DATE \_\_\_\_\_  
BY \_\_\_\_\_  
CHECKED \_\_\_\_\_  
DATE \_\_\_\_\_  
NO. \_\_\_\_\_



PROFILE  
DATE \_\_\_\_\_  
BY \_\_\_\_\_  
CHECKED \_\_\_\_\_  
DATE \_\_\_\_\_  
NO. \_\_\_\_\_

