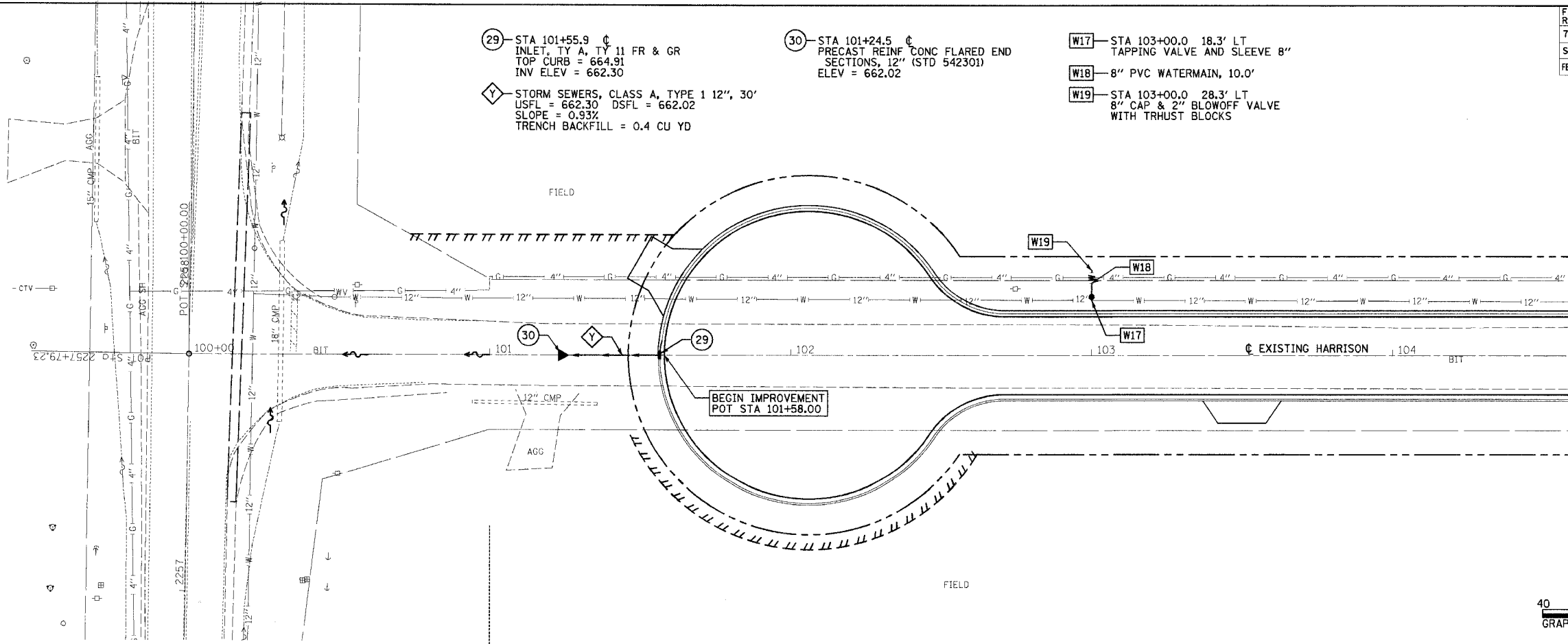


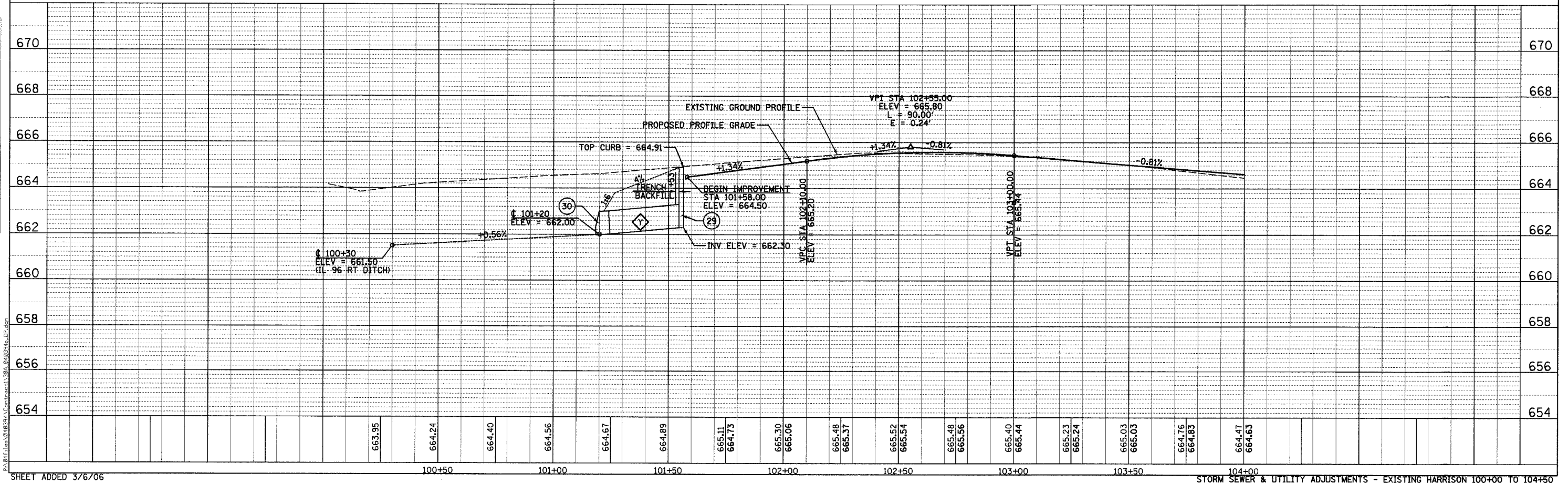
F.A.U. RTE.	SECTION	COUNTY	TOTAL SHEETS	SHEET NO.
7814	05-00186-01-PV	ADAMS	78	30A
STA.		TO STA.		
FED. ROAD DIST. NO.		ILLINOIS FED. AID PROJECT		

- 29 - STA 101+55.9  $\odot$   
INLET, TY A, TY 11 FR & GR  
TOP CURB = 664.91  
INV ELEV = 662.30
- 30 - STA 101+24.5  $\odot$   
PRECAST REINF CONC FLARED END  
SECTIONS, 12" (STD 542301)  
ELEV = 662.02
- W17 - STA 103+00.0 18.3' LT  
TAPPING VALVE AND SLEEVE 8"
- W18 - 8" PVC WATERMAIN, 10.0'
- W19 - STA 103+00.0 28.3' LT  
8" CAP & 2" BLOWOFF VALVE  
WITH TRHUST BLOCKS
- $\diamond$  STORM SEWERS, CLASS A, TYPE 1 12", 30'  
USFL = 662.30 DSFL = 662.02  
SLOPE = 0.93%  
TRENCH BACKFILL = 0.4 CU YD



PLAN	DATE
BY	
REVIEWED	
NOTE BOOK	
NO.	

PROFILE	DATE
BY	
REVIEWED	
NOTE BOOK	
NO.	



SHEET ADDED 3/6/06 100+50 101+00 101+50 102+00 102+50 103+00 103+50 104+00 STORM SEWER & UTILITY ADJUSTMENTS - EXISTING HARRISON 100+00 TO 104+00