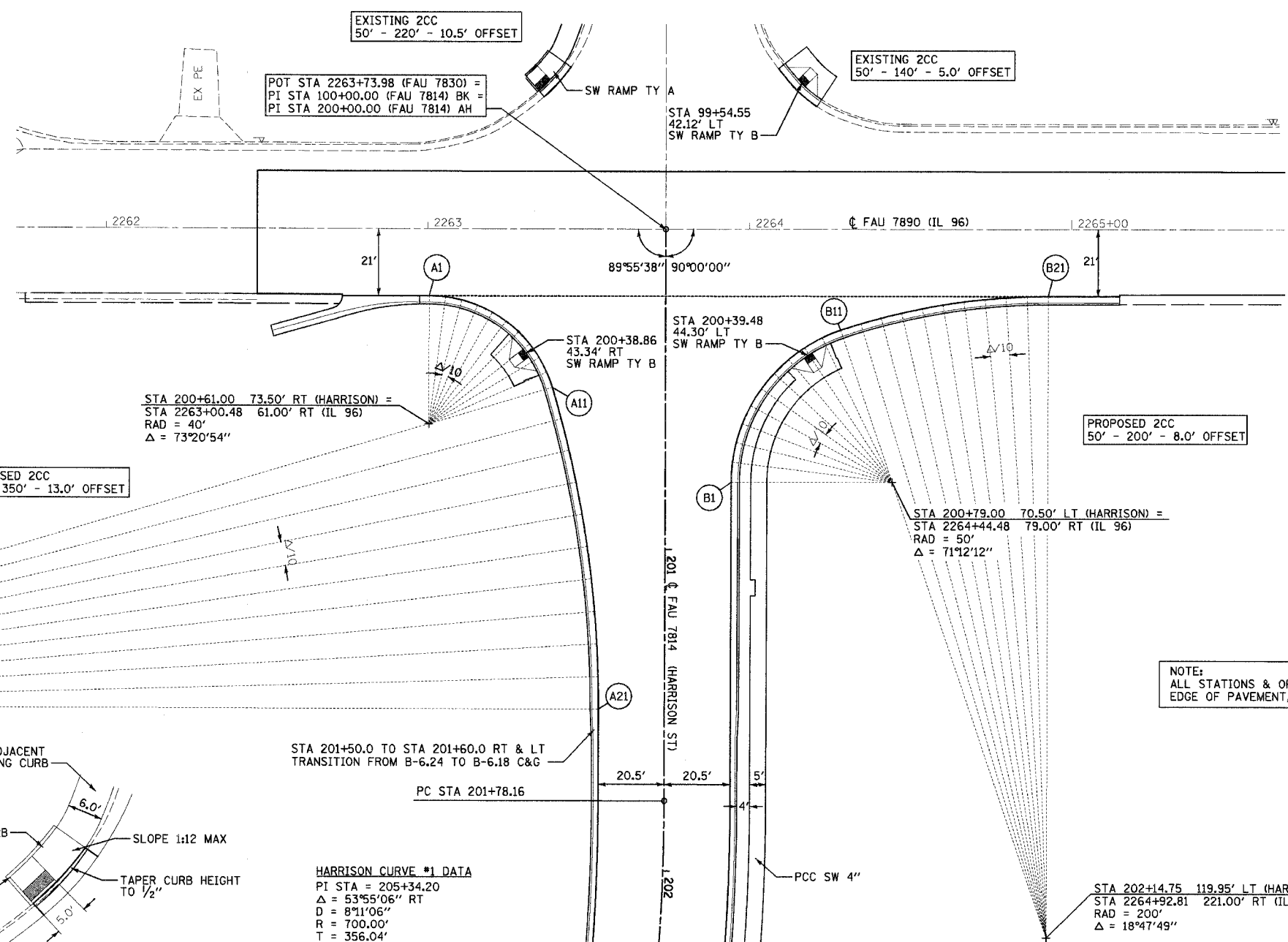
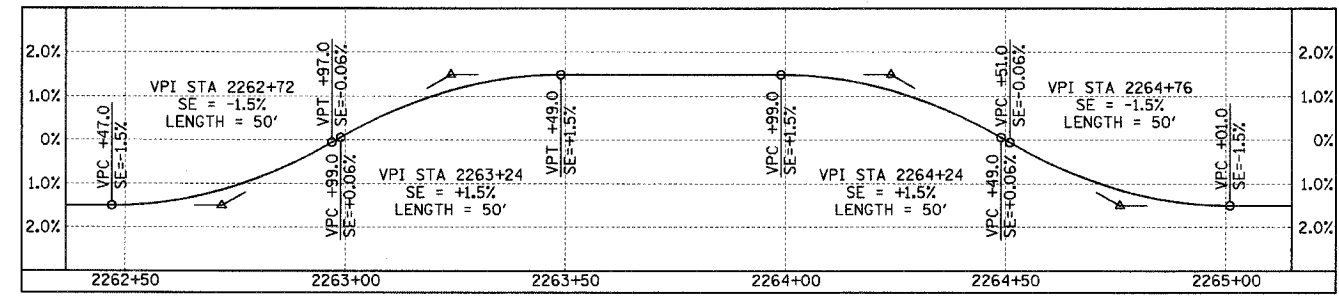


F.A.U. RTE.	SECTION	COUNTY	TOTAL SHEETS	SHEET NO.
7814	05-00186-01-PV	ADAMS	78	31
STA.		TO STA.		
FED. ROAD DIST. NO.		ILLINOIS FED. AID PROJECT		

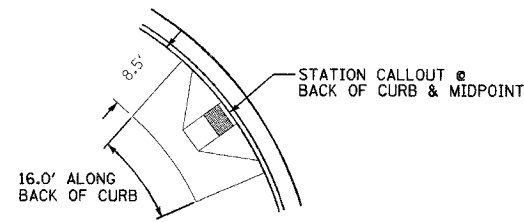
	HARRISON		IL 96		ELEVATION
	STATION	OFFSET	STATION	OFFSET	
A1	200+21.00	73.50 RT	2263+00.48	21.00 RT	656.54
A2	200+21.33	68.39 RT	2263+05.59	21.33 RT	656.58
A3	200+22.30	63.37 RT	2263+10.61	22.30 RT	656.60
A4	200+23.91	58.51 RT	2263+15.47	23.91 RT	656.63
A5	200+26.13	53.90 RT	2263+20.08	26.13 RT	656.66
A6	200+28.92	49.61 RT	2263+24.37	28.92 RT	656.69
A7	200+32.23	45.71 RT	2263+28.27	32.23 RT	656.72
A8	200+36.01	42.26 RT	2263+31.72	36.01 RT	656.75
A9	200+40.21	39.33 RT	2263+34.65	40.21 RT	656.78
A10	200+44.74	36.95 RT	2263+37.03	44.74 RT	656.82
A11	200+49.54	35.18 RT	2263+38.80	49.54 RT	656.85
A12	200+59.32	32.41 RT	2263+41.58	59.32 RT	656.91
A13	200+69.19	29.92 RT	2263+44.06	69.19 RT	656.97
A14	200+79.12	27.72 RT	2263+46.26	79.12 RT	657.03
A15	200+89.11	25.81 RT	2263+48.17	89.11 RT	657.09
A16	200+99.15	24.19 RT	2263+49.79	99.15 RT	657.16
A17	201+09.24	22.86 RT	2263+51.12	109.24 RT	657.23
A18	201+19.35	21.83 RT	2263+52.15	119.35 RT	657.29
A19	201+29.50	21.09 RT	2263+52.89	129.50 RT	657.35
A20	201+39.66	20.65 RT	2263+53.33	139.66 RT	657.40
A21	201+49.83	20.50 RT	2263+53.48	149.83 RT	657.45

	HARRISON		IL 96		ELEVATION
	STATION	OFFSET	STATION	OFFSET	
B1	200+79.00	20.50 LT	2263+94.48	79.00 RT	657.06
B2	200+72.80	20.89 LT	2263+94.87	72.80 RT	657.04
B3	200+66.70	22.04 LT	2263+96.02	66.70 RT	657.02
B4	200+60.79	23.94 LT	2263+97.92	60.79 RT	656.99
B5	200+55.16	26.55 LT	2264+00.53	55.16 RT	656.97
B6	200+49.89	29.85 LT	2264+03.83	49.89 RT	656.94
B7	200+45.08	33.77 LT	2264+07.75	45.08 RT	656.90
B8	200+40.79	38.26 LT	2264+12.24	40.79 RT	656.86
B9	200+37.08	43.24 LT	2264+17.22	37.08 RT	656.83
B10	200+34.03	48.65 LT	2264+22.63	34.03 RT	656.81
B11	200+31.67	54.39 LT	2264+28.37	31.67 RT	656.81
B12	200+29.66	60.63 LT	2264+34.61	29.66 RT	656.83
B13	200+27.85	66.94 LT	2264+40.92	27.85 RT	656.85
B14	200+26.25	73.31 LT	2264+47.29	26.25 RT	656.87
B15	200+24.86	79.72 LT	2264+53.70	24.86 RT	656.89
B15	200+23.69	86.17 LT	2264+60.15	23.69 RT	656.91
B17	200+22.72	92.66 LT	2264+66.64	22.72 RT	656.93
B18	200+21.97	99.18 LT	2264+73.16	21.97 RT	656.95
B19	200+21.43	105.72 LT	2264+79.70	21.43 RT	656.98
B20	200+21.11	112.27 LT	2264+86.25	21.11 RT	657.02
B21	200+21.00	118.83 LT	2264+92.81	21.00 RT	657.09

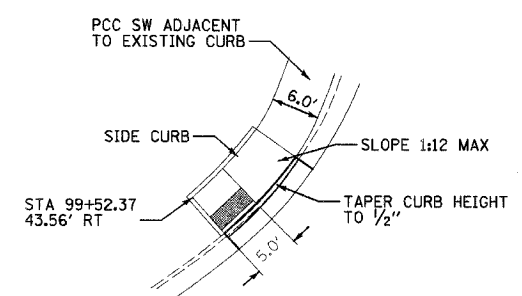
FAU 7830 SE RT TRANSITION PROFILE



STA 201+49.83 370.50' RT (HARRISON) =  
 STA 2260+03.48 149.83' RT (IL 96)  
 RAD = 350'  
 Δ = 16°39'06"



TYPICAL SIDEWALK DIMENSIONS FOR TY B RAMP  
 SEE STD 424001 FOR ADDITIONAL DETAILS  
 SCALE: 1"=10'

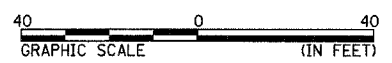


SIDEWALK DIMENSIONS FOR TY A RAMP SW CORNER  
 SEE STD 424001 FOR ADDITIONAL DETAILS  
 SCALE: 1"=10'

HARRISON CURVE #1 DATA  
 PI STA = 205+34.20  
 Δ = 53°55'06" RT  
 D = 8°11'06"  
 R = 700.00'  
 T = 356.04'  
 L = 658.74'  
 E = 85.34'  
 SE = RC (2.0%)  
 PC STA = 201+78.16  
 PRC STA = 208+36.89  
 SE ATTAINED STA 201+42 TO STA 201+96  
 SE REMOVED STA 207+83 TO STA 208+37

REVISIONS	
NAME	DATE
TITLE BLOCK - SEB	9/26/05
ROW COMM. - SEB	3/6/06

GEOMETRIC DETAILS  
 IL 96 & HARRISON  
 FAU 7814 (HARRISON STREET)  
 SECTION 05-00186-01-PV  
 ADAMS COUNTY  
 SCALE: 1"=20'  
 DATE: 9/12/05  
 DRAWN BY: SEB  
 CHECKED BY: SRW



2/6/2006

P:\041\104\048304\Center\131\_048304.dwg