

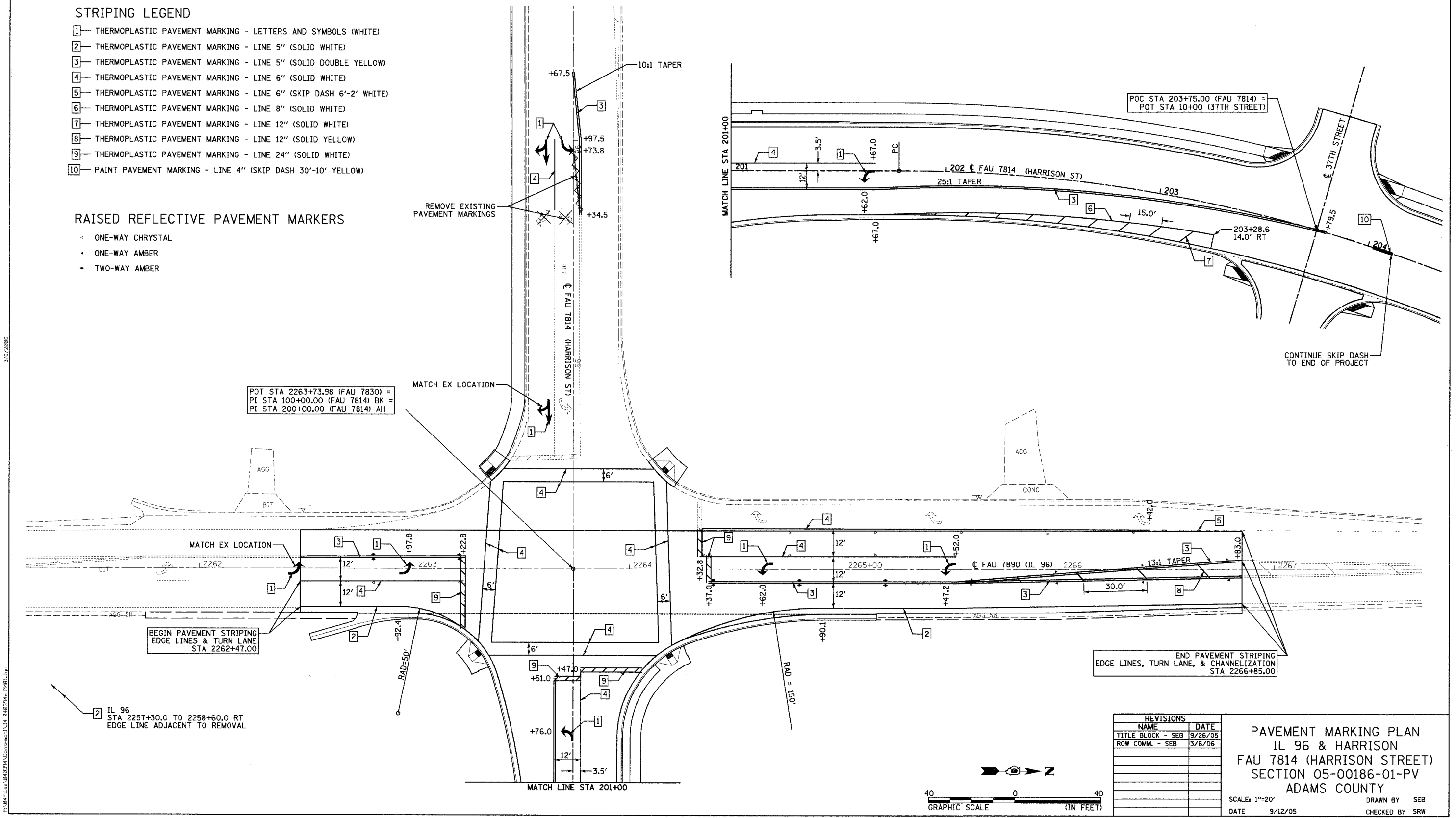
F.A.U. RTE.	SECTION	COUNTY	TOTAL SHEETS	SHEET NO.
7814	05-00186-01-PV	ADAMS	78	34
STA.		TO STA.		
FED. ROAD DIST. NO.		ILLINOIS FED. AID PROJECT		

**STRIPING LEGEND**

- 1— THERMOPLASTIC PAVEMENT MARKING - LETTERS AND SYMBOLS (WHITE)
- 2— THERMOPLASTIC PAVEMENT MARKING - LINE 5" (SOLID WHITE)
- 3— THERMOPLASTIC PAVEMENT MARKING - LINE 5" (SOLID DOUBLE YELLOW)
- 4— THERMOPLASTIC PAVEMENT MARKING - LINE 6" (SOLID WHITE)
- 5— THERMOPLASTIC PAVEMENT MARKING - LINE 6" (SKIP DASH 6'-2" WHITE)
- 6— THERMOPLASTIC PAVEMENT MARKING - LINE 8" (SOLID WHITE)
- 7— THERMOPLASTIC PAVEMENT MARKING - LINE 12" (SOLID WHITE)
- 8— THERMOPLASTIC PAVEMENT MARKING - LINE 12" (SOLID YELLOW)
- 9— THERMOPLASTIC PAVEMENT MARKING - LINE 24" (SOLID WHITE)
- 10— PAINT PAVEMENT MARKING - LINE 4" (SKIP DASH 30'-10' YELLOW)

**RAISED REFLECTIVE PAVEMENT MARKERS**

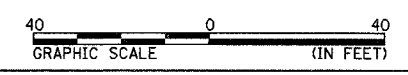
- ◀ ONE-WAY CHRYSAL
- ◀ ONE-WAY AMBER
- TWO-WAY AMBER



REVISIONS	
NAME	DATE
TITLE BLOCK - SEB	9/26/05
ROW COMM. - SEB	3/6/06

**PAVEMENT MARKING PLAN**  
**IL 96 & HARRISON**  
**FAU 7814 (HARRISON STREET)**  
**SECTION 05-00186-01-PV**  
**ADAMS COUNTY**

SCALE: 1"=20'  
DATE 9/12/05  
DRAWN BY SEB  
CHECKED BY SRW



3/12/2005  
P:\M11\10402354\Compas\1134\_04E314e\_PMD.dwg