

TRAFFIC SIGNAL EQUIPMENT QUANTITIES			
QUANTITY	UNIT	ITEM	LOCATION
1	EACH	SERVICE INSTALLATION, TYPE B (MODIFIED)	
56	FOOT	CONDUIT IN TRENCH, 1 1/4" DIA., PVC	
52	FOOT	CONDUIT IN TRENCH, 2" DIA., PVC	
106	FOOT	CONDUIT IN TRENCH, 2 1/2" DIA., PVC	
29	FOOT	CONDUIT IN TRENCH, 3" DIA., PVC	
165	FOOT	CONDUIT IN TRENCH, 4" DIA., PVC	
60	FOOT	CONDUIT, AUGERED 3" DIA., PVC	
3	EACH	REMOVE EXISTING JUNCTION BOX	
4	EACH	CONCRETE HANDHOLE	HH-1,3,4,5
1	EACH	CONCRETE DOUBLE HANDHOLE	DHH-1
335	FOOT	TRENCH AND BACKFILL FOR ELECTRICAL WORK	
503	FOOT	ELECTRIC CABLE IN CONDUIT, 600V (EPR-TYPE RHW) 3-1/C NO. 10	
1539	FOOT	ELECTRIC CABLE IN CONDUIT, SIGNAL NO. 14 3C	
500	FOOT	ELECTRIC CABLE IN CONDUIT, SIGNAL NO. 14 5C	
1462	FOOT	ELECTRIC CABLE IN CONDUIT, SIGNAL NO. 14 7C	
696	FOOT	ELECTRIC CABLE IN CONDUIT, SIGNAL NO. 14 12C	
495	FOOT	ELECTRIC CABLE IN CONDUIT, COMMUNICATION NO. 18 3 PAIR	
940	FOOT	ELECTRIC CABLE IN CONDUIT, COMMUNICATION NO. 18 6 PAIR	
31	FOOT	ELECTRIC CABLE IN CONDUIT, SERVICE, NO. 6 2 C	
4	EACH	TRAFFIC SIGNAL POST, ALUMINUM 16 FT.	C,D,F,I
3	EACH	PEDESTRIAN PUSH-BUTTON POST, TYPE II	B,G,J
1	EACH	STEEL COMBINATION MAST ARM ASSEMBLY AND POLE 32 FT.	F
2	EACH	STEEL COMBINATION MAST ARM ASSEMBLY AND POLE 36 FT.	A,H
1	EACH	STEEL COMBINATION MAST ARM ASSEMBLY AND POLE 38 FT.	K
12.0	FOOT	CONCRETE FOUNDATION, TYPE A	C,D,F,I
3.0	FOOT	CONCRETE FOUNDATION, TYPE D	
54.0	FOOT	CONCRETE FOUNDATION, TYPE E 30-INCH DIAMETER	A,E,H,K
1	EACH	DRILL EXISTING HANDHOLE	HH-2
18	EACH	TRAFFIC SIGNAL BACKPLATE	
8	EACH	PEDESTRIAN PUSH-BUTTON	B,D,G,J
534	FOOT	REMOVE ELECTRIC CABLE FROM CONDUIT	
1	EACH	REMOVE EXISTING TRAFFIC SIGNAL EQUIPMENT	
3	EACH	REMOVE EXISTING HANDHOLE	
6	EACH	REMOVE EXISTING CONCRETE FOUNDATION	
3	EACH	SIGNAL HEAD, POLYCARBONATE, LED, 1-FACE, 3-SECTION, BRACKET MOUNTED	A,H,K
2	EACH	SIGNAL HEAD, POLYCARBONATE, LED, 1-FACE, 3-SECTION, MAST ARM MOUNTED	E,K
1	EACH	SIGNAL HEAD, POLYCARBONATE, LED, 1-FACE, 5-SECTION, BRACKET MOUNTED	E
4	EACH	SIGNAL HEAD, POLYCARBONATE, LED, 1-FACE, 5-SECTION, MAST ARM MOUNTED	A,E,H,K
3	EACH	SIGNAL HEAD, POLYCARBONATE, LED, 2-FACE, 1-3-SECTION, 1-5-SECTION, BRACKET MOUNTED	D,F,I
1	EACH	SIGNAL HEAD, POLYCARBONATE, LED, 2-FACE, 5-SECTION, BRACKET MOUNTED	C
6	EACH	PEDESTRIAN SIGNAL HEAD, POLYCARBONATE, LED, 1-FACE, BRACKET MOUNTED	A,C,F,H,I,K
1	EACH	PEDESTRIAN SIGNAL HEAD, POLYCARBONATE, LED, 2-FACE, BRACKET MOUNTED	D
2	EACH	EMERGENCY VEHICLE PRIORITY SYSTEM DETECTOR UNIT	H,K
1	EACH	EMERGENCY VEHICLE PRIORITY SYSTEM	
1	EACH	VIDEO VEHICLE DETECTION SYSTEM	
1	EACH	RELOCATE EXISTING TRAFFIC SIGNAL CONTROLLER AND CABINET COMPLETE	
2	EACH	RELOCATE EXISTING LUMINAIRE	
1253	FOOT	ELECTRIC CABLE IN CONDUIT, GROUND, NO. 6 1C (GREEN)	

CABLE LOCATION SUMMARY								
ITEM TO CONTROLLER	#6	#10	#14	#14	#14	#14	#18	#18
MAST ARM "A"			221.9	221.9	262.9			
PEDESTRIAN PUSH BUTTON "B"			191.7					
SIGNAL "C"			189.2			189.2		
SIGNAL "D"			269.6		276.6	276.6		
MAST ARM "E"					595.0			334.5
SIGNAL "F"			173.0			173.0		
PEDESTRIAN PUSH BUTTON "G"			141.4					
MAST ARM "H"			149.4	185.4	192.4		372.8	194.4
SIGNAL "I"			57.3			57.3		
PEDESTRIAN PUSH BUTTON "J"			53.4					
MAST ARM "K"			92.2	92.2	135.2		122.2	137.2
SERVICE	31.0							
MAST ARM "E" TO SERVICE		346.5						
MAST ARM "K" TO SERVICE		156.2						
TOTAL:	31.0	502.7	1539.1	499.5	1462.1	696.1	495.0	940.0

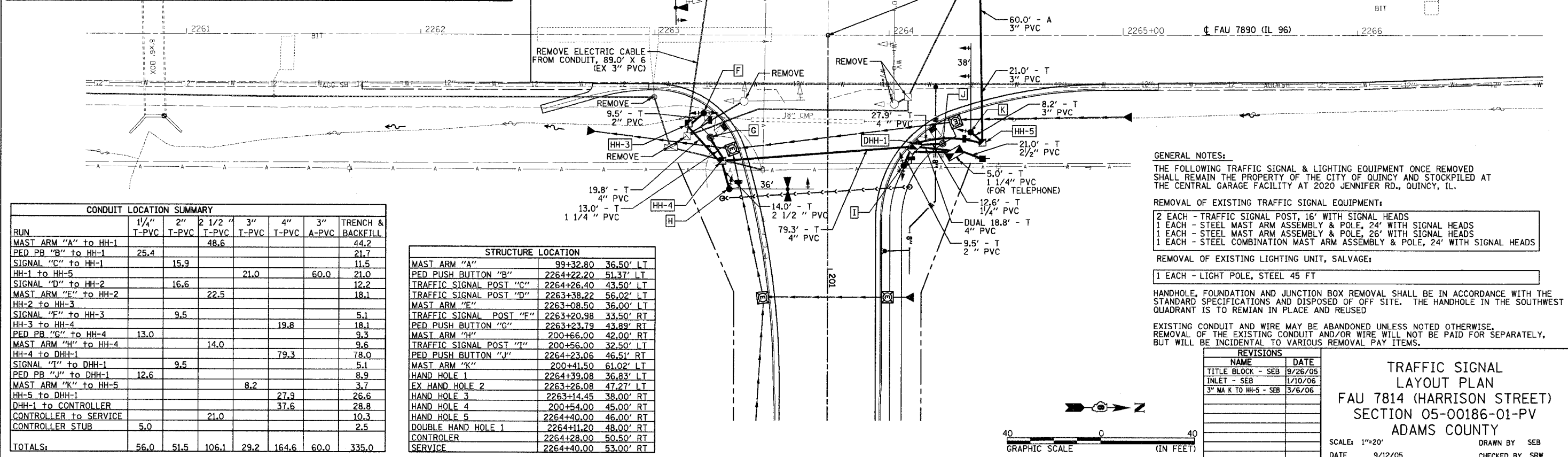
F.A.U. RTE.	SECTION	COUNTY	TOTAL SHEETS	SHEET NO.
7814	05-00186-01-PV	ADAMS	78	37

STATION	TO STA.
FED. ROAD DIST. NO.	ILLINOIS FED. AID PROJECT

HANDHOLE REMOVAL SCHEDULE	
LOCATION	NUMBER
2263+13.9 43.5' RT	1
2264+08.2 26.5' RT	1
2264+39.1 36.8' LT	1
TOTAL:	3

PROPOSED CONTROLLER SEQUENCE								
PHASE	I	II	III	IV	V	VI	VII	VIII
MOVEMENT	↑	←	↓	→	↖	↗	↘	↙
CONCURRENT MOVEMENT PERMITTED	5	6	7	8	1	2	3	4
CONCURRENT OVERLAP PER NEMA			A					
PEDESTRIAN MOVEMENT PERMITTED		P2		P4		P6		P8

CONCRETE FOUNDATION REMOVAL SCHEDULE			
LOCATION	TYPE	NUMBER	
2263+06.9 48.4' RT	TYPE D	1	
2263+12.9 38.3' LT	TYPE E	1	
2263+38.2 28.4' RT	TYPE E	1	
2263+42.2 57.4' LT	TYPE A	1	
2264+02.4 29.5' RT	TYPE E	1	
2264+31.3 39.7' LT	TYPE A	1	
TOTAL:		6	



CONDUIT LOCATION SUMMARY							
RUN	1 1/4"	2"	2 1/2"	3"	4"	3"	TRENCH & BACKFILL
MAST ARM "A" to HH-1			48.6				44.2
PEDESTRIAN PB "B" to HH-1	25.4						21.7
SIGNAL "C" to HH-1		15.9					11.5
HH-1 to HH-5				21.0		60.0	21.0
SIGNAL "D" to HH-2		16.6					12.2
MAST ARM "E" to HH-2			22.5				18.1
HH-2 to HH-3		9.5					5.1
SIGNAL "F" to HH-3					19.8		18.1
HH-3 to HH-4							9.3
PEDESTRIAN PB "G" to HH-4	13.0						9.6
MAST ARM "H" to HH-4		14.0					78.0
HH-4 to DHH-1					79.3		5.1
SIGNAL "I" to DHH-1		9.5					8.9
PEDESTRIAN PB "J" to DHH-1	12.6						3.7
MAST ARM "K" to HH-5				8.2			27.9
HH-5 to DHH-1					27.9		28.8
DHH-1 to CONTROLLER					37.6		10.3
CONTROLLER TO SERVICE			21.0				2.5
CONTROLLER STUB	5.0						
TOTALS:	56.0	51.5	106.1	29.2	164.6	60.0	335.0

STRUCTURE LOCATION	
MAST ARM "A"	99+32.80 36.50' LT
PEDESTRIAN PUSH BUTTON "B"	2264+22.20 51.37' LT
TRAFFIC SIGNAL POST "C"	2264+26.40 43.50' LT
TRAFFIC SIGNAL POST "D"	2263+38.22 56.02' LT
MAST ARM "E"	2263+08.50 36.00' LT
TRAFFIC SIGNAL POST "F"	2263+20.98 33.50' RT
PEDESTRIAN PUSH BUTTON "G"	2263+23.79 43.89' RT
MAST ARM "H"	200+66.00 42.00' RT
TRAFFIC SIGNAL POST "I"	200+56.00 32.50' LT
PEDESTRIAN PUSH BUTTON "J"	2264+23.06 46.51' RT
MAST ARM "K"	200+41.50 61.02' LT
HAND HOLE 1	2264+39.08 36.83' LT
EX HAND HOLE 2	2263+26.08 47.27' LT
HAND HOLE 3	2263+14.45 38.00' RT
HAND HOLE 4	200+54.00 45.00' RT
HAND HOLE 5	2264+40.00 46.00' RT
DOUBLE HAND HOLE 1	2264+11.20 48.00' RT
CONTROLLER	2264+28.00 50.50' RT
SERVICE	2264+40.00 53.00' RT

GENERAL NOTES:
 THE FOLLOWING TRAFFIC SIGNAL & LIGHTING EQUIPMENT ONCE REMOVED SHALL REMAIN THE PROPERTY OF THE CITY OF QUINCY AND STOCKPILED AT THE CENTRAL GARAGE FACILITY AT 2020 JENNIFER RD., QUINCY, IL.

REMOVAL OF EXISTING TRAFFIC SIGNAL EQUIPMENT:
 2 EACH - TRAFFIC SIGNAL POST, 16' WITH SIGNAL HEADS
 1 EACH - STEEL MAST ARM ASSEMBLY & POLE, 24' WITH SIGNAL HEADS
 1 EACH - STEEL MAST ARM ASSEMBLY & POLE, 26' WITH SIGNAL HEADS
 1 EACH - STEEL COMBINATION MAST ARM ASSEMBLY & POLE, 24' WITH SIGNAL HEADS

REMOVAL OF EXISTING LIGHTING UNIT, SALVAGE:
 1 EACH - LIGHT POLE, STEEL 45 FT

HANDHOLE, FOUNDATION AND JUNCTION BOX REMOVAL SHALL BE IN ACCORDANCE WITH THE STANDARD SPECIFICATIONS AND DISPOSED OF OFF SITE. THE HANDHOLE IN THE SOUTHWEST QUADRANT IS TO REMAIN IN PLACE AND REUSED.

EXISTING CONDUIT AND WIRE MAY BE ABANDONED UNLESS NOTED OTHERWISE. REMOVAL OF THE EXISTING CONDUIT AND/OR WIRE WILL NOT BE PAID FOR SEPARATELY, BUT WILL BE INCIDENTAL TO VARIOUS REMOVAL PAY ITEMS.

REVISIONS	
NAME	DATE
TITLE BLOCK - SEB	9/26/05
INLET - SEB	1/10/06
3" MA K TO HH-5 - SEB	3/6/06

TRAFFIC SIGNAL LAYOUT PLAN
FAU 7814 (HARRISON STREET)
SECTION 05-00186-01-PV
ADAMS COUNTY

SCALE: 1"=20'
 DATE: 9/12/05
 DRAWN BY: SEB
 CHECKED BY: SRW

