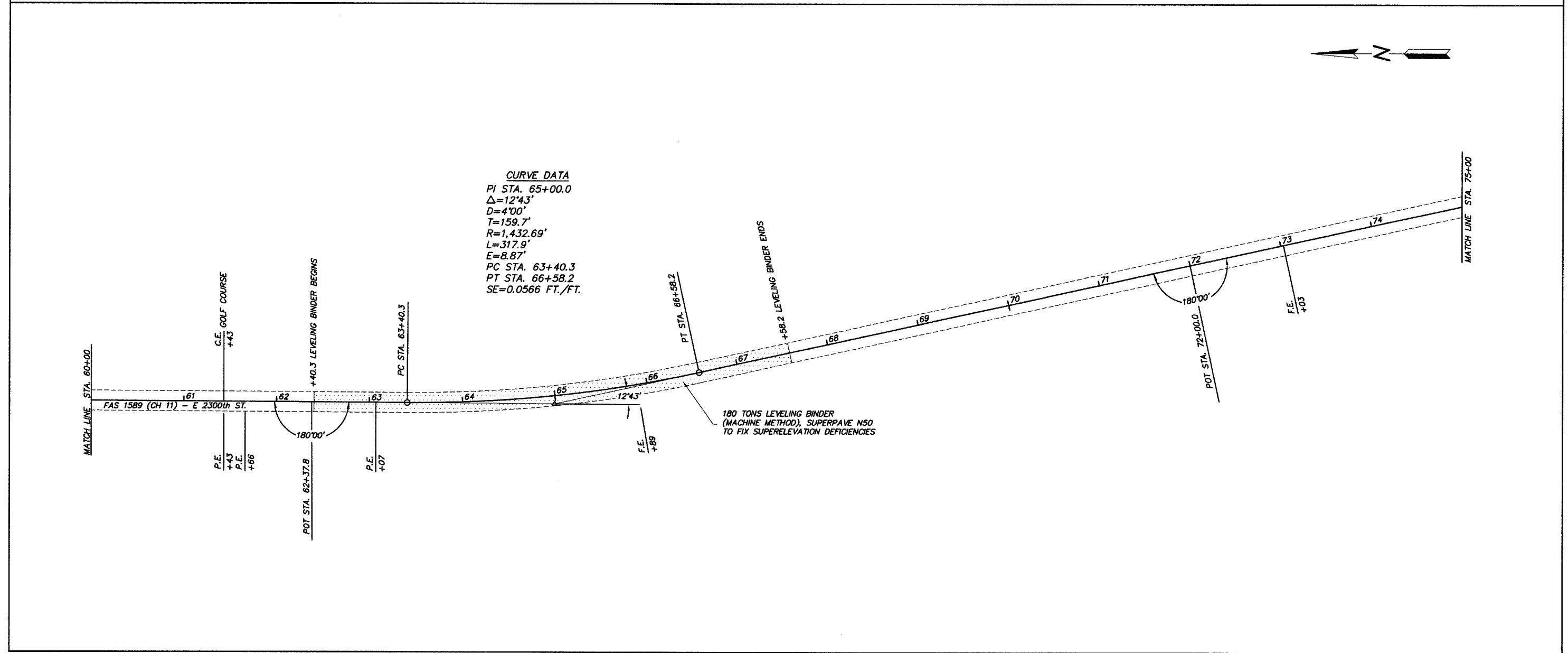
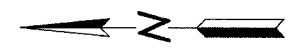
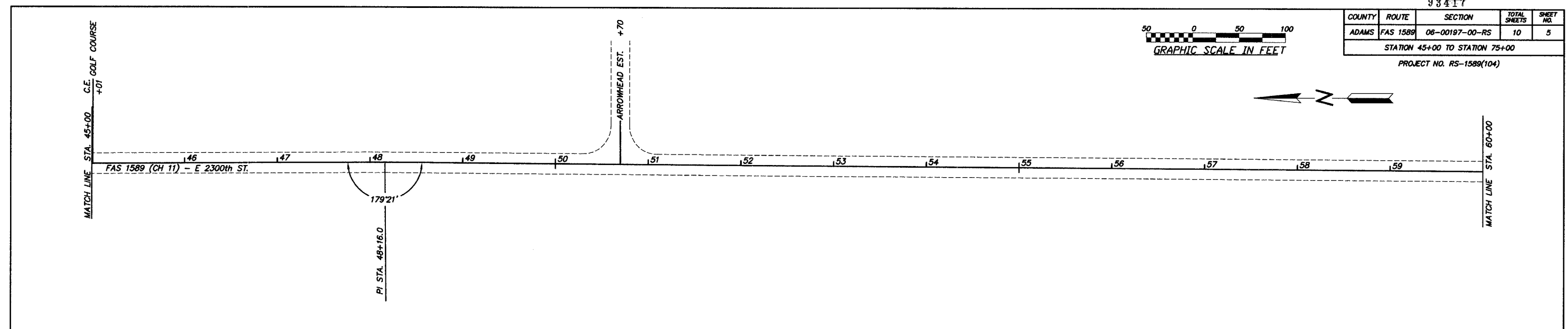
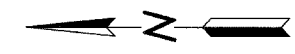
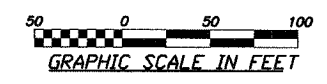


93417

COUNTY	ROUTE	SECTION	TOTAL SHEETS	SHEET NO.
ADAMS	FAS 1589	06-00197-00-RS	10	5

STATION 45+00 TO STATION 75+00  
PROJECT NO. RS-1589(104)



**CURVE DATA**  
 PI STA. 65+00.0  
 $\Delta=12'43''$   
 $D=4'00''$   
 $T=159.7'$   
 $R=1,432.69'$   
 $L=317.9'$   
 $E=8.87'$   
 PC STA. 63+40.3  
 PT STA. 66+58.2  
 $SE=0.0566$  FT./FT.

180 TONS LEVELING BINDER  
 (MACHINE METHOD), SUPERPAVE NS0  
 TO FIX SUPERELEVATION DEFICIENCIES