

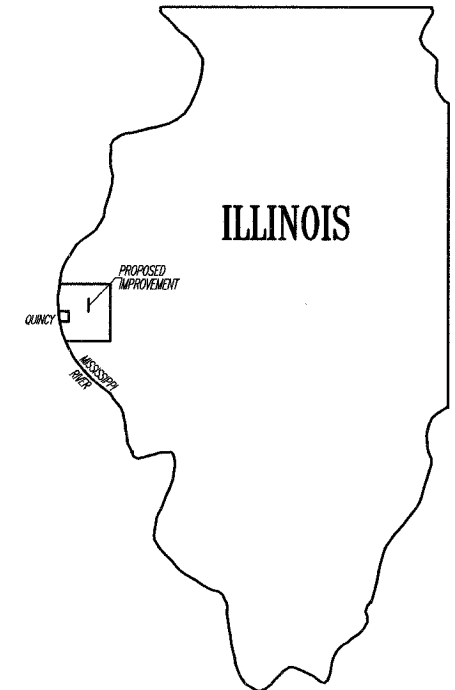
COUNTY	ROUTE	SECTION	TOTAL SHEETS	SHEET NO.
ADAMS	FAS 1589	06-00197-00-RS	10	1

STATE OF ILLINOIS
DEPARTMENT OF TRANSPORTATION
DIVISION OF HIGHWAYS
PLANS FOR PROPOSED
SURFACE TRANSPORTATION/RURAL PROGRAM
LOCAL AGENCY PAVEMENT PRESERVATION

(C.H. 11) FAS 1589 SECTION 06-00197-00-RS ADAMS COUNTY
PROJECT NO. RS-1589(104) JOB NO. C-96-225-06

INDEX OF SHEETS:

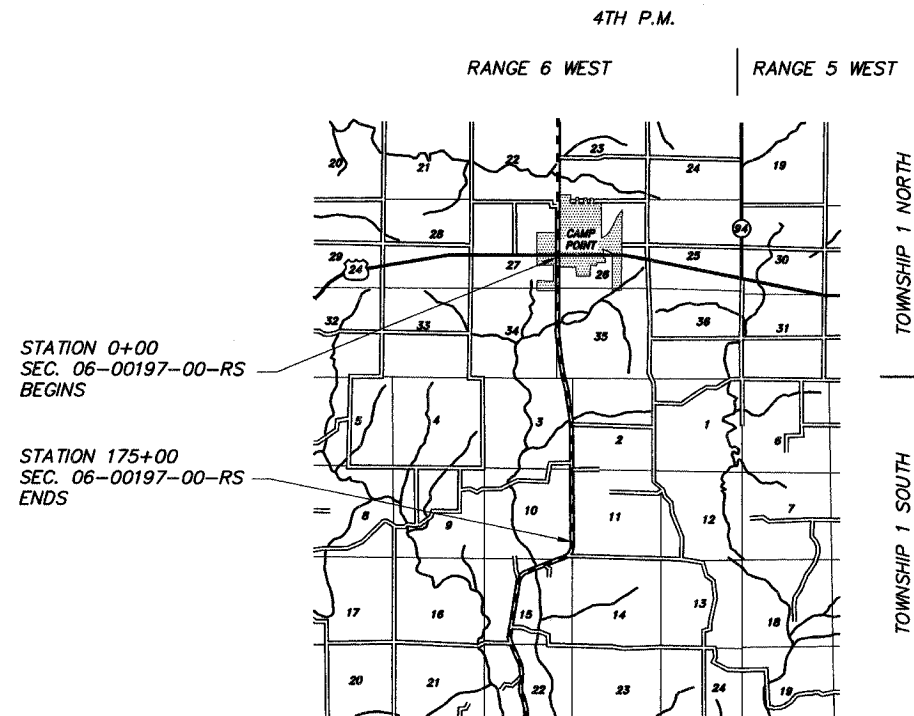
SHEET NO.	SHEET
1	TITLE SHEET
2	SUMMARY OF QUANTITIES GENERAL NOTES TRAFFIC CONTROL
3	TYPICAL CROSS SECTIONS
4-8	PLAN SHEETS
9	PATCH DETAIL BUTT JOINT DETAIL
10	SIDE ROAD & ENTRANCE DETAILS
STANDARD 701301-02	
STANDARD 701306-01	
STANDARD 702001-06	
STANDARD BLR 21-6	
STANDARD BLR 24-1	



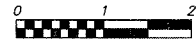
PROPOSED IMPROVEMENT MARKED THUS —

THESE PLANS WERE PREPARED BY ME OR BY A FULL-TIME MEMBER OF MY STAFF WORKING UNDER MY PERSONAL SUPERVISION.

SUBMITTED BY Richard A. Klanger DATE 3-20-06
COUNTY ENGINEER
LICENSE NO. 062-032961
LIC. EXPIRES 11/30/2007



LOCATION MAP



FUNCTIONAL CLASS: MINOR COLLECTOR (NON-URBAN)
ADT=1100

PROPOSED IMPROVEMENT CONSISTS OF PLACING 2" POLYMERIZED BITUMINOUS CONCRETE SURFACE COURSE, SUPERPAVE, MIX "C", N50 ON THE EXISTING 22' ROADWAY WITH OTHER MISCELLANEOUS CONSTRUCTION

UTILITIES:

J.U.L.I.E.	1-800-892-0123
ADAMS RURAL ELECTRICAL CO-OP	CAMP POINT, IL
AMEREN CIPS (GAS & ELECTRIC)	QUINCY, IL
VERIZON	JACKSONVILLE, IL
CLAYTON-CAMP POINT WATER DISTRICT ...	CAMP POINT, IL
AMERITECH	QUINCY, IL

GROSS LENGTH:
STA. 0+00.00 TO STA. 175+00.00 = 17,500.00 FT.
NET LENGTH TO BE IMPROVED: 17,500.00 FT. = 3.314 MILES

APPROVED <u>March 20,</u>	2006
<u>Richard A. Klanger</u> COUNTY ENGINEER	
PASSED <u>APRIL 11</u>	2006
<u>WR Fry</u> DISTRICT ENGINEER OF CONSTRUCTION	
PASSED <u>APRIL 11</u>	2006
<u>Tom Felt</u> DISTRICT ENGINEER OF LOCAL ROADS AND STREETS	
RELEASING FOR BID BASED ON LIMITED REVIEW	APRIL 11 2006
<u>Christine M Reed THE</u> DEPUTY DIRECTOR OF HIGHWAYS REGION FOUR ENGINEER	
STATE OF ILLINOIS DEPARTMENT OF TRANSPORTATION	

CONTRACT NO. 93417

ADAMS COUNTY

SECTION 06-00197-00-RS

ROUTE FAS 1589

COUNTY	ROUTE	SECTION	TOTAL SHEETS	SHEET NO.
ADAMS	FAS 1589	06-00197-00-RS	10	2

SUMMARY OF QUANTITIES - GENERAL NOTES

TRAFFIC CONTROL PLAN

PROJECT NO. RS-1589(104)

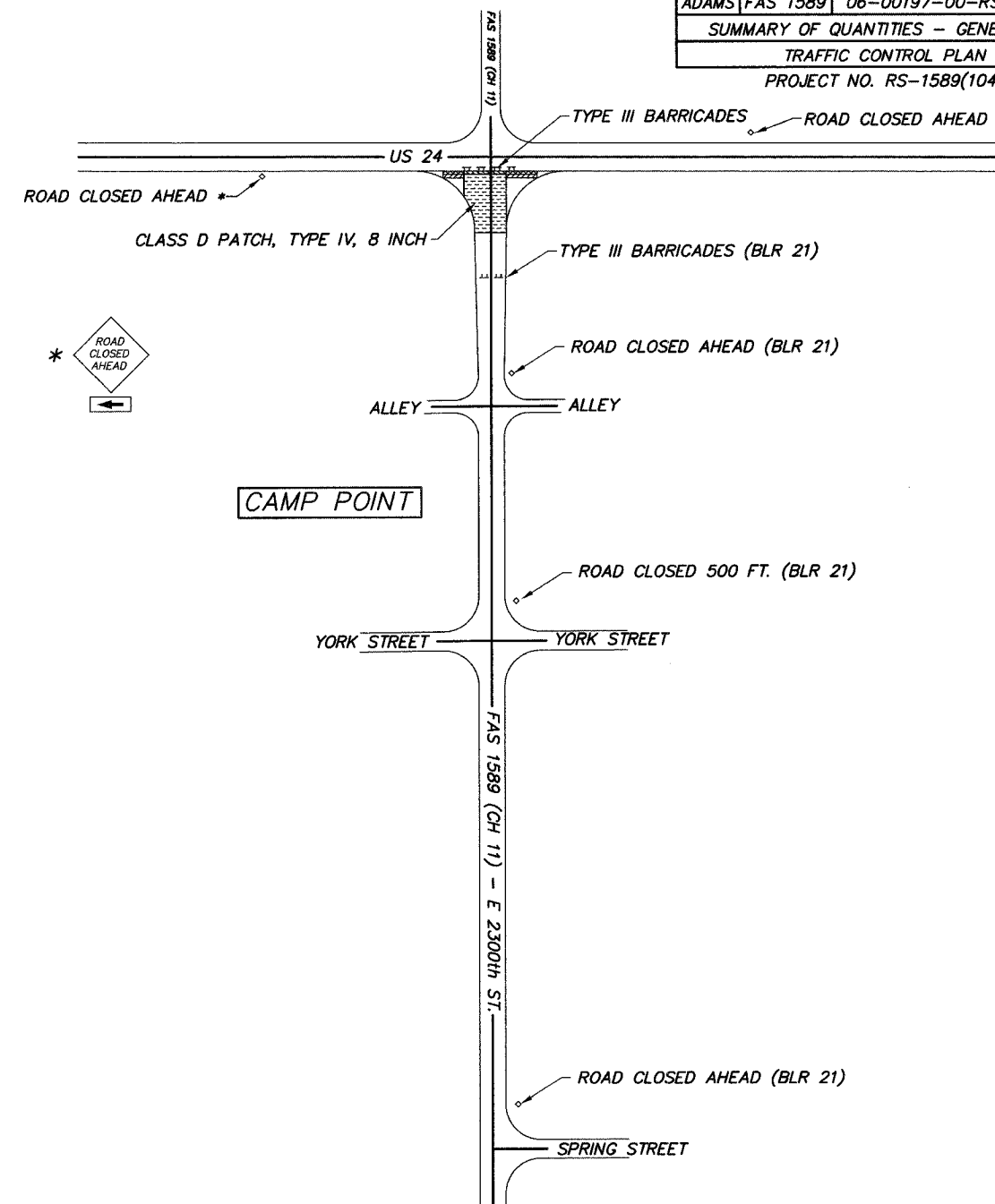
GENERAL NOTES

- WHERE SECTION OR SUB-SECTION STONES, USGS BENCH MARK MONUMENTS, AND U.S. ARMY CORPS OF ENGINEERS SURVEY MARKERS ARE ENCOUNTERED, THE ENGINEER SHALL BE NOTIFIED BEFORE SUCH STONES AND MONUMENTS ARE REMOVED. THE CONTRACTOR SHALL PROTECT AND CAREFULLY PRESERVE ALL PROPERTY MARKS UNTIL AN OWNER, AN AUTHORIZED SURVEYOR OR THEIR REPRESENTATIVE HAS WITNESSED OR OTHERWISE REFERENCED THE PROPERTY MARKS LOCATION.
- ALL PRIVATELY OWNED UTILITIES, UNLESS OTHERWISE SPECIFIED, WILL BE MOVED BY THEIR RESPECTIVE OWNERS WHERE REQUIRED. THE FOLLOWING UTILITY COMPANIES HAVE FACILITIES WITHIN THE LIMITS OF CONSTRUCTION:
 - VERIZON
 - AMERITECH
 - ADAMS RURAL ELECTRICAL CO-OP
 - AMEREN CIPS (GAS & ELECTRIC)
 - CLAYTON-CAMP POINT WATER DISTRICT
- THE NOMINAL THICKNESS FOR THE LEVELING BINDER, SURFACE COURSES AND AGGREGATE SHOULDERS ARE SHOWN ON THE TYPICAL SECTIONS, STANDARDS, SCHEDULES OR SPECIAL DETAILS. THE CONSTRUCTED THICKNESS OF THE ABOVE ITEMS SHALL NOT BE LESS THAN 90% OF THE NOMINAL THICKNESS AT ANY LOCATION. THE THICKNESS OF BITUMINOUS MIXTURE SHOWN ON THE PLANS IS THE NOMINAL THICKNESS. DEVIATIONS FROM THE NOMINAL THICKNESS WILL BE PERMITTED WHEN SUCH DEVIATIONS OCCUR DUE TO IRREGULARITIES IN THE EXISTING SURFACE OR BASE WHICH THE BITUMINOUS MIXTURE IS PLACED.
- THE CONTRACTOR SHALL BE RESPONSIBLE FOR DETERMINING THE LOCATION AND ELEVATION OF ALL EXISTING UTILITIES AND TO NOTIFY ALL UTILITY COMPANIES PRIOR TO THE BEGINNING OF CONSTRUCTION. THIS WILL BE CONSIDERED INCIDENTAL TO THE CONTRACT.
- APPLICATION RATES SHALL BE AS FOLLOWS UNLESS OTHERWISE SPECIFIED BY THE ENGINEER:
 - BITUMINOUS MIXTURES
112 LBS PER SQUARE YARD
 - BITUMINOUS MATERIALS (PRIME COAT)
0.05-0.10 GALLON PER SQUARE YARD ON PCC OR BITUMINOUS CONCRETE
0.25-0.35 GALLON PER SQUARE YARD ON AGGREGATE
 - AGGREGATE (PRIME COAT)
4 LBS PER SQUARE YARD
- PERMANENT & TEMPORARY PAVEMENT MARKING TO BE DONE BY OTHERS. SHORT TERM PAVEMENT MARKING IS INCLUDED IN THE CONTRACT. THE REMOVAL OF THE SHORT TERM PAVEMENT MARKING TAPE WILL BE DONE BY OTHERS UPON COMPLETION OF THE PERMANENT PAVEMENT MARKING.

SUMMARY OF QUANTITIES

QUANTITY	UNIT	ITEM	CODE NO.	SPECIAL PROVISIONS
264	TON	BITUMINOUS CONCRETE SURFACE COURSE, SUPERPAVE, MIX "C", N50	X4066414	*
4,715	TON	POLYMERIZED BITUMINOUS CONCRETE SURFACE COURSE, SUPERPAVE, MIX "C", N50	X4066514	*
795	TON	LEVELING BINDER (MACHINE METHOD), SUPERPAVE N50	X4066765	*
32	CU. YD.	REMOVAL AND DISPOSAL OF UNSUITABLE MATERIAL	20201200	*
57	TON	SUB-BASE GRANULAR MATERIAL, TYPE B	20201500	
4,083	GALLON	BITUMINOUS MATERIALS (PRIME COAT)	40600100	*
82	TON	AGGREGATE (PRIME COAT)	40600300	
30	SQ. YD.	BITUMINOUS SURFACE REMOVAL - BUTT JOINT	40600980	*
27	SQ. YD.	TEMPORARY RAMP	40600990	
190	SQ. YD.	CLASS D PATCHES, TYPE IV, 8 INCH	44201747	
1	L. SUM	MOBILIZATION	67100100	
1	L. SUM	TRAFFIC CONTROL AND PROTECTION	70101700	*
1,590	FOOT	SHORT TERM PAVEMENT MARKING	70300100	*

CONSTRUCTION TYPE CODE: I000



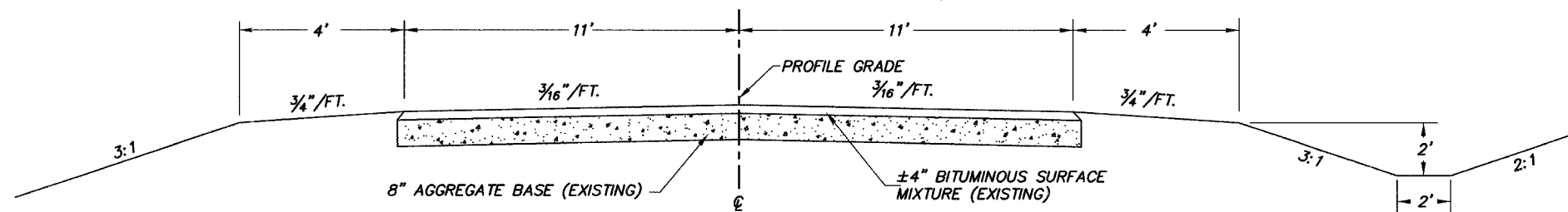
TRAFFIC CONTROL PLAN

TRAFFIC CONTROL NOTES

- THE DETAILS SHOWN ARE FOR THE ROAD CLOSURES ONLY. THE REQUIRED ROAD CONSTRUCTION SIGNS AS DESCRIBED IN THE SPECIAL PROVISIONS WILL ALSO BE IN PLACE DURING ROAD CLOSURES.
- CONCURRENT RESURFACING OPERATIONS AND A ROAD CLOSURE WILL BE ALLOWED.
- THE ROADWAY SHALL NOT BE CLOSED OVERNIGHT.

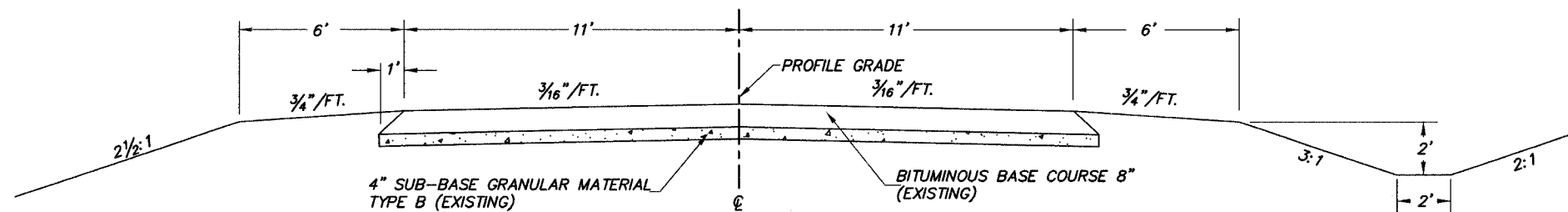
COUNTY	ROUTE	SECTION	TOTAL SHEETS	SHEET NO.
ADAMS	FAS 1589	06-00197-00-RS	10	3

TYPICAL CROSS SECTIONS
PROJECT NO. RS-1589(104)



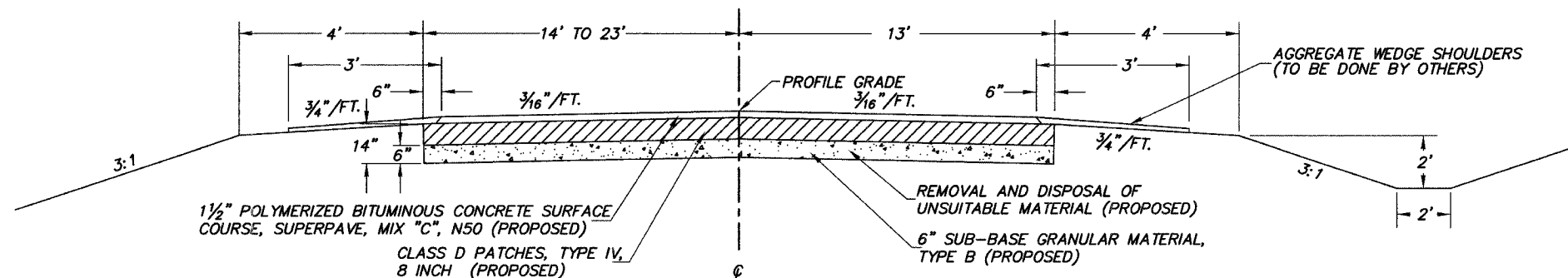
EXISTING CROSS SECTION

BUILT AS: SECTION 68G
STA. 0+00 TO STA. 42+25
STA. 43+25 TO STA. 98+00
STA. 99+00 TO STA. 175+00



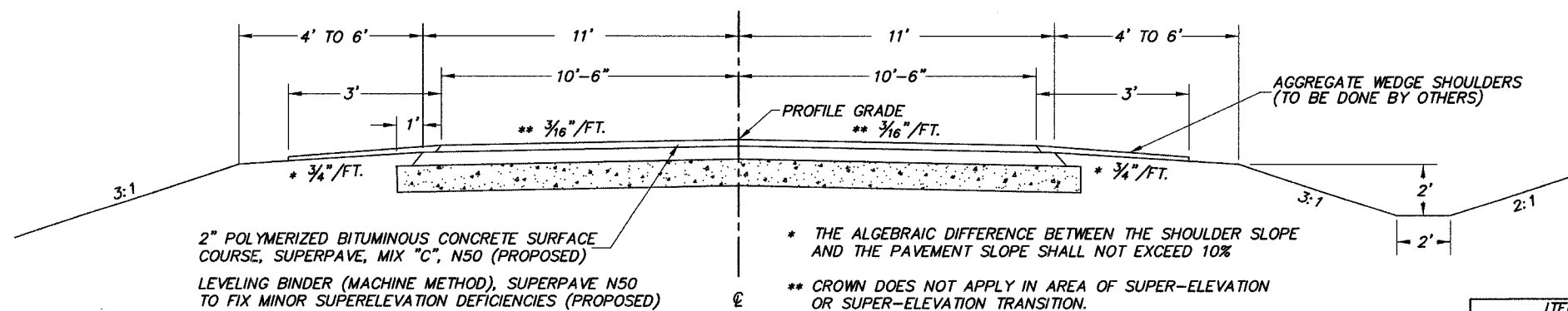
EXISTING CROSS SECTION

BUILT AS: CBF 695 & CBF 699
STA. 42+25 TO STA. 43+25
STA. 98+00 TO STA. 99+00



PROPOSED CROSS SECTION

STA. 0+00 TO STA. 0+53



PROPOSED CROSS SECTION

STA. 0+53 TO STA. 175+00

LEVELING BINDER (MACHINE METHOD), SUPERPAVE N50 TO FIX MINOR SUPERELEVATION DEFICIENCIES

STA. TO STA.	TONS
62+40.3 TO 67+58.2	180
79+09.7 TO 85+36.8	226
TOTAL	406

1 1/4" LEVELING BINDER (MACHINE METHOD), SUPERPAVE, N50

STA. TO STA.	TONS
0+60 TO 4+50	64
25+00 TO 34+00	149
41+25 TO 43+50	37
96+50 TO 100+00	57
133+00 TO 138+00	82
TOTAL	389

CLASS I BITUMINOUS MIXTURE REQUIREMENTS

ITEM	ASPHALT GRADE	AGG. COMPOSITION	ALLOWABLE RAP	VOIDS
POLY. SURFACE	SBS PG 64-28	IL-9.5 or 12.5 MIX C	0%	4.0% @ N50
SURFACE	PG 58-22	IL-9.5 or 12.5 MIX C	15%	4.0% @ N50
LEVELING BINDER	PG 58-22	IL-12.5	15%	4.0% @ N50

* THE ALGEBRAIC DIFFERENCE BETWEEN THE SHOULDER SLOPE AND THE PAVEMENT SLOPE SHALL NOT EXCEED 10%

** CROWN DOES NOT APPLY IN AREA OF SUPER-ELEVATION OR SUPER-ELEVATION TRANSITION.

2" POLYMERIZED BITUMINOUS CONCRETE SURFACE COURSE, SUPERPAVE, MIX "C", N50 (PROPOSED)

LEVELING BINDER (MACHINE METHOD), SUPERPAVE N50 TO FIX MINOR SUPERELEVATION DEFICIENCIES (PROPOSED)

1 1/2" POLYMERIZED BITUMINOUS CONCRETE SURFACE COURSE, SUPERPAVE, MIX "C", N50 (PROPOSED)
CLASS D PATCHES, TYPE IV, 8 INCH (PROPOSED)

REMOVAL AND DISPOSAL OF UNSUITABLE MATERIAL (PROPOSED)
6" SUB-BASE GRANULAR MATERIAL, TYPE B (PROPOSED)

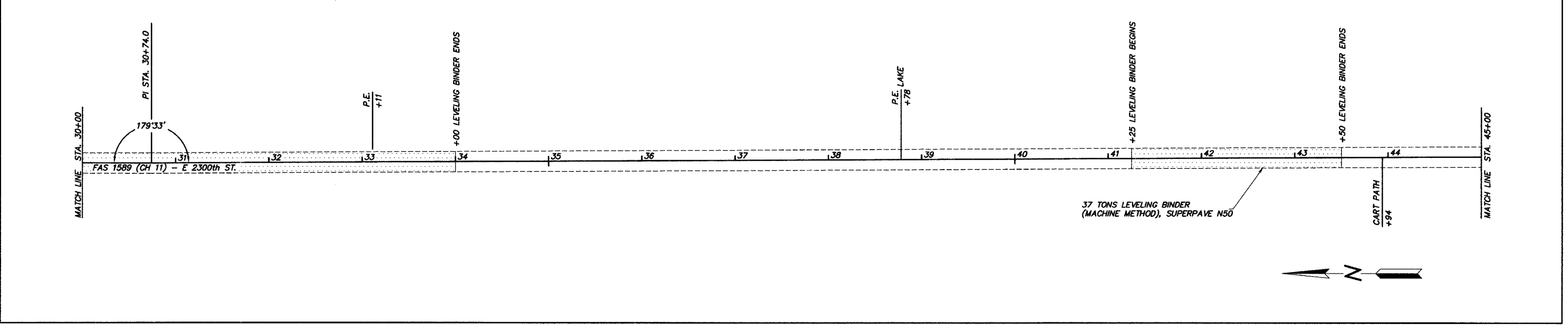
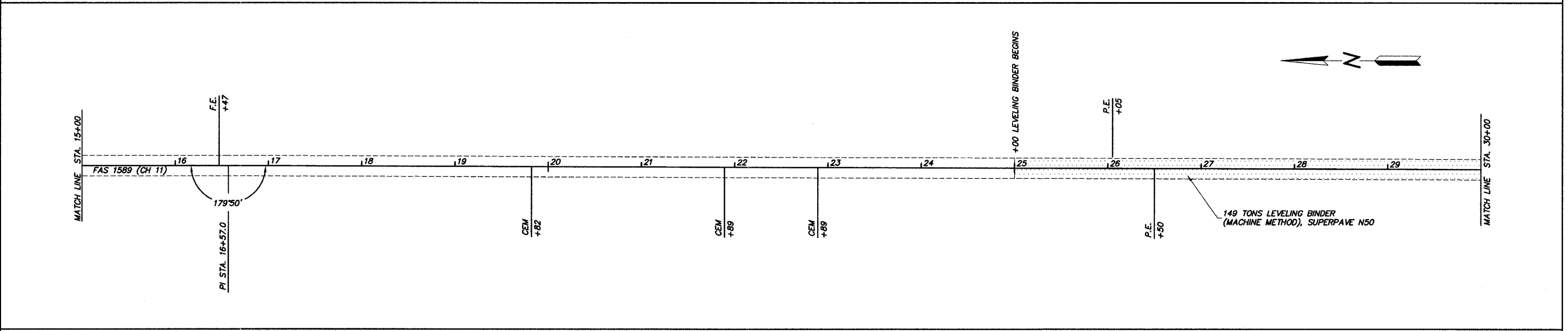
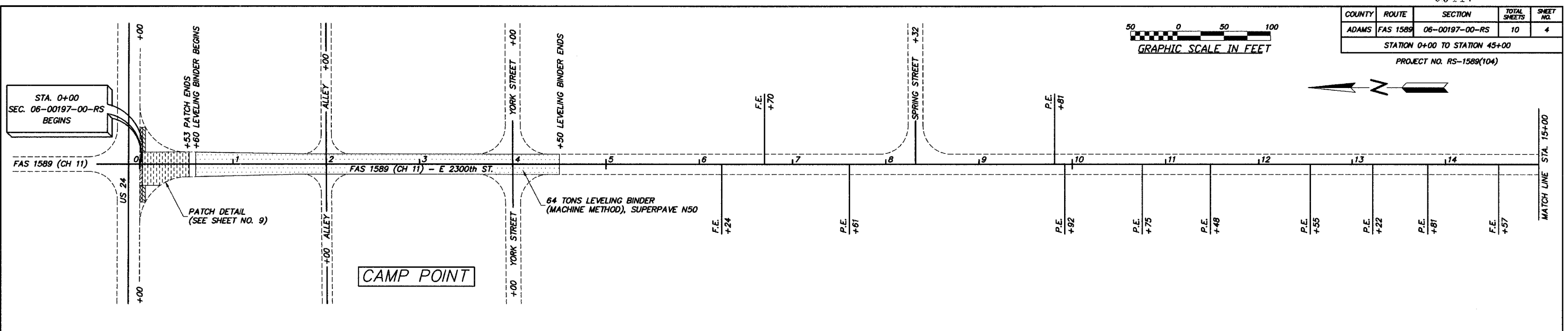
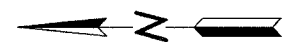
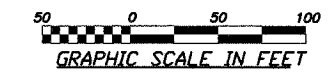
AGGREGATE WEDGE SHOULDERS (TO BE DONE BY OTHERS)

AGGREGATE WEDGE SHOULDERS (TO BE DONE BY OTHERS)

COUNTY	ROUTE	SECTION	TOTAL SHEETS	SHEET NO.
ADAMS	FAS 1589	06-00197-00-RS	10	4

STATION 0+00 TO STATION 45+00

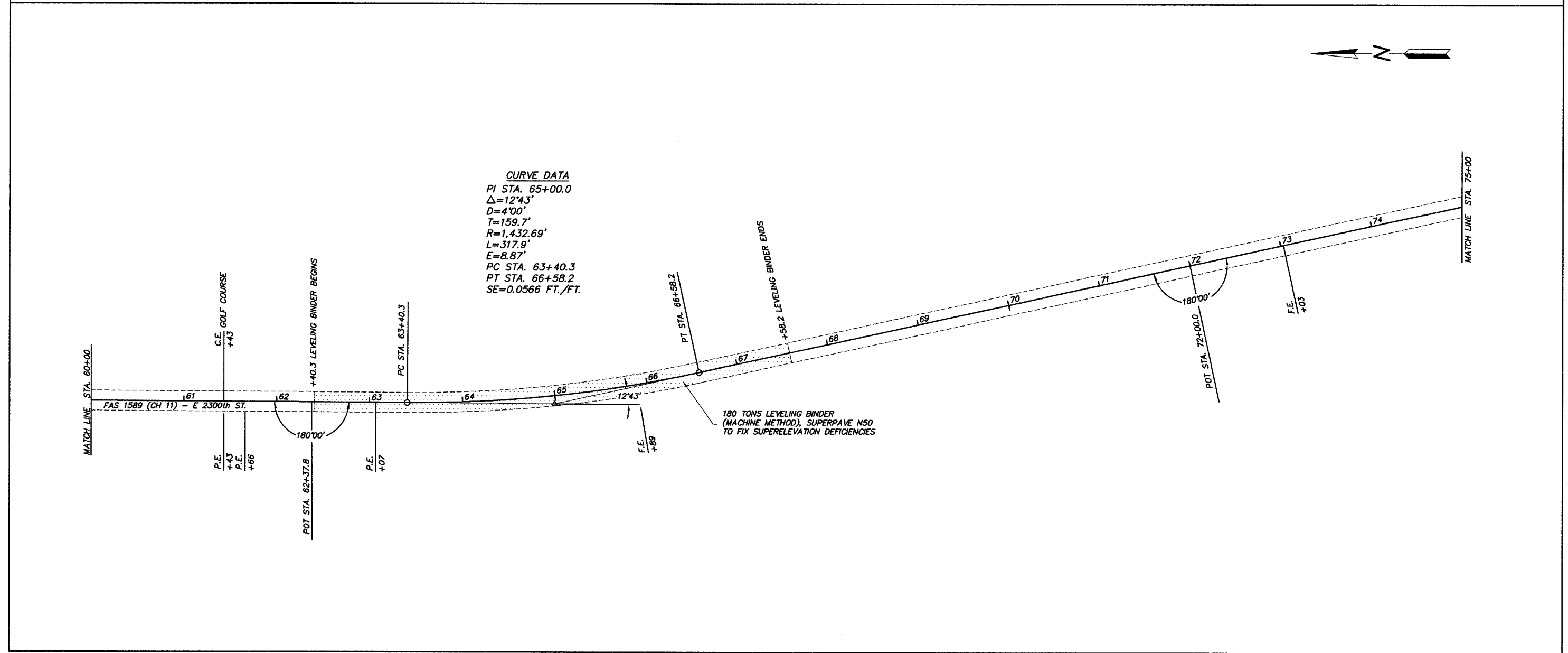
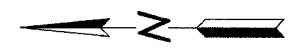
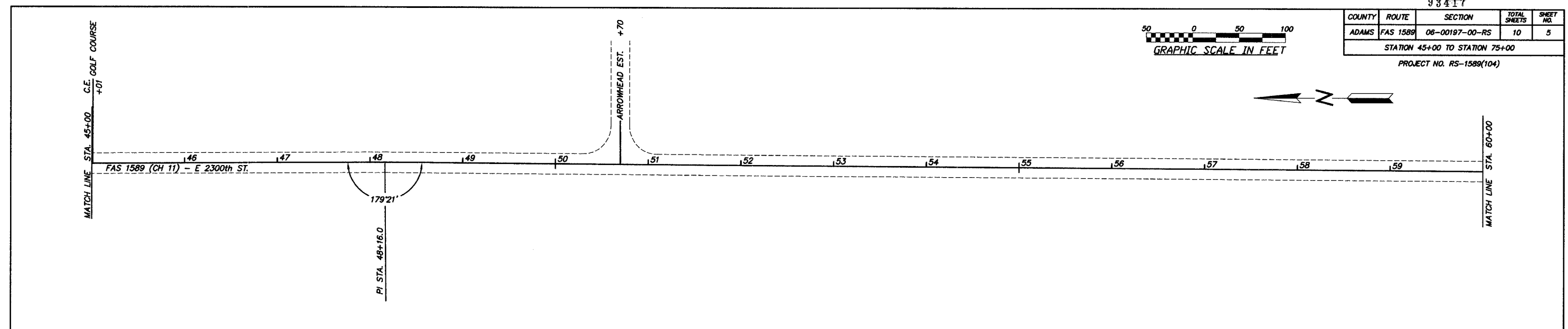
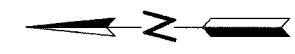
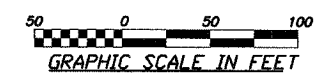
PROJECT NO. RS-1589(104)



93417

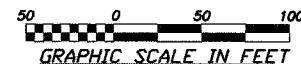
COUNTY	ROUTE	SECTION	TOTAL SHEETS	SHEET NO.
ADAMS	FAS 1589	06-00197-00-RS	10	5

STATION 45+00 TO STATION 75+00
PROJECT NO. RS-1589(104)



CURVE DATA
 PI STA. 65+00.0
 $\Delta=12'43''$
 D=4'00"
 T=159.7'
 R=1,432.69'
 L=317.9'
 E=8.87'
 PC STA. 63+40.3
 PT STA. 66+58.2
 SE=0.0566 FT./FT.

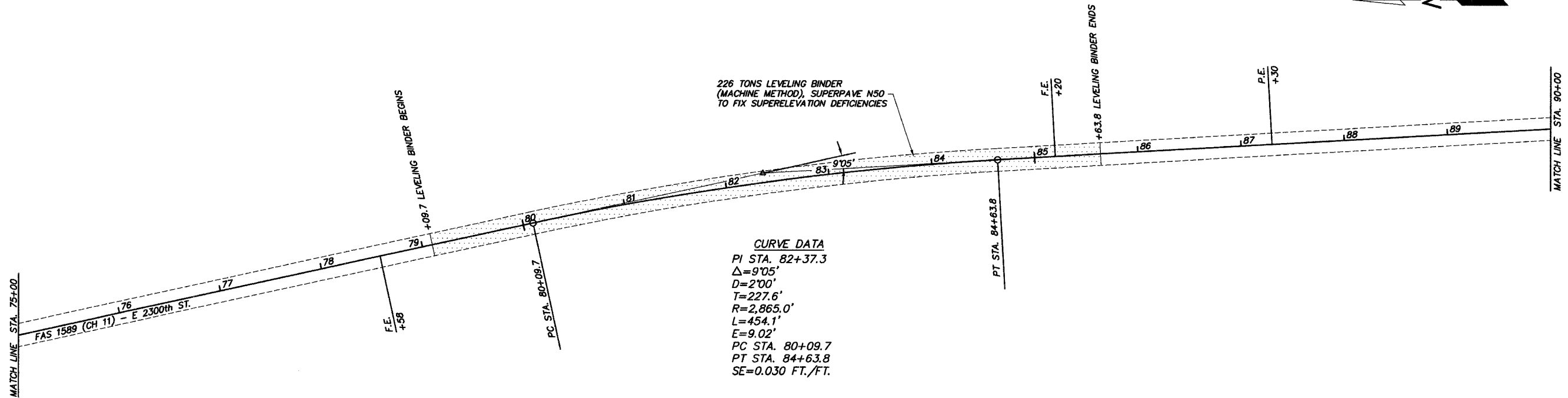
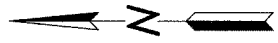
180 TONS LEVELING BINDER
 (MACHINE METHOD), SUPERPAVE NS0
 TO FIX SUPERELEVATION DEFICIENCIES



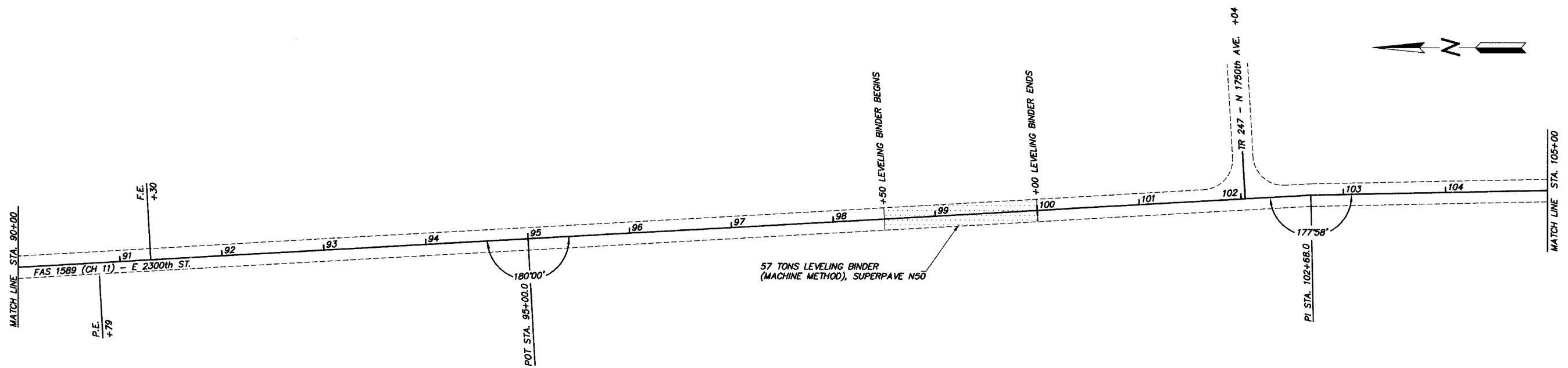
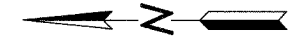
COUNTY	ROUTE	SECTION	TOTAL SHEETS	SHEET NO.
ADAMS	FAS 1589	06-00197-00-RS	10	6

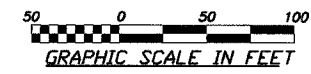
STATION 75+00 TO STATION 105+00

PROJECT NO. RS-1589(104)



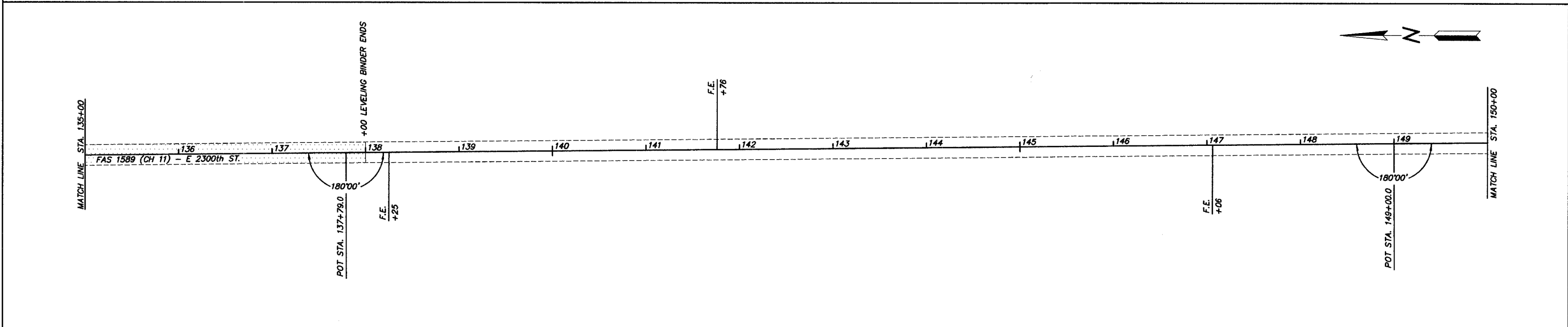
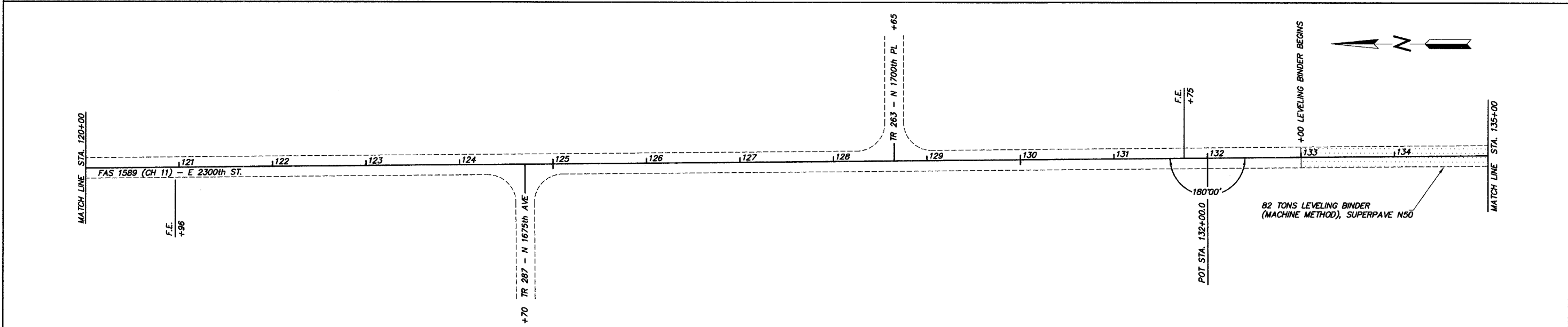
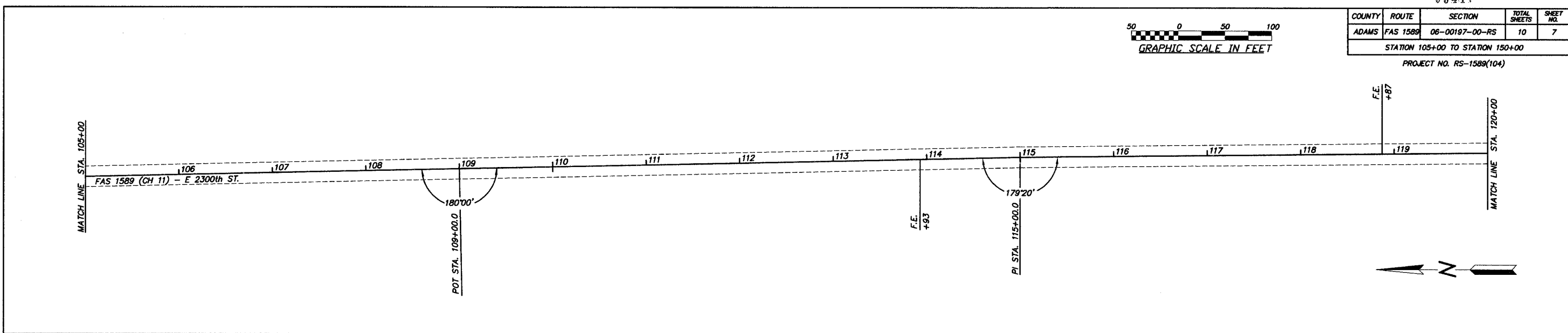
CURVE DATA
 PI STA. 82+37.3
 $\Delta=9^{\circ}05'$
 $D=2^{\circ}00'$
 $T=227.6'$
 $R=2,865.0'$
 $L=454.1'$
 $E=9.02'$
 PC STA. 80+09.7
 PT STA. 84+63.8
 $SE=0.030$ FT./FT.





COUNTY	ROUTE	SECTION	TOTAL SHEETS	SHEET NO.
ADAMS	FAS 1589	06-00197-00-RS	10	7

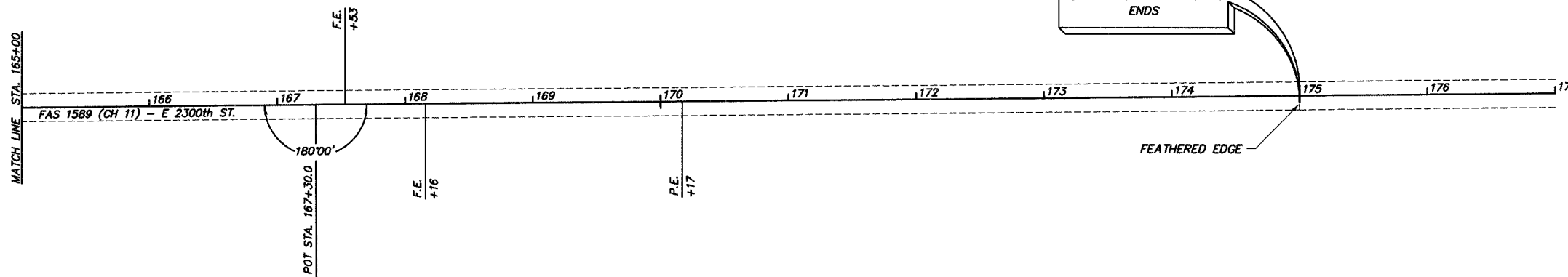
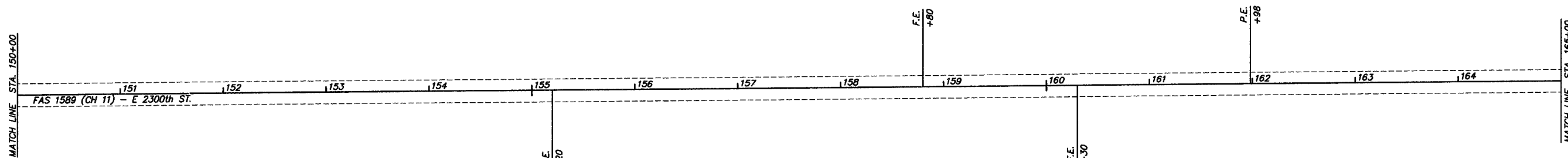
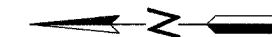
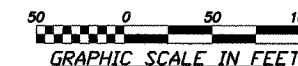
STATION 105+00 TO STATION 150+00
PROJECT NO. RS-1589(104)



COUNTY	ROUTE	SECTION	TOTAL SHEETS	SHEET NO.
ADAMS	FAS 1589	06-00197-00-RS	10	8

STATION 150+00 TO STATION 177+00

PROJECT NO. RS-1589(104)



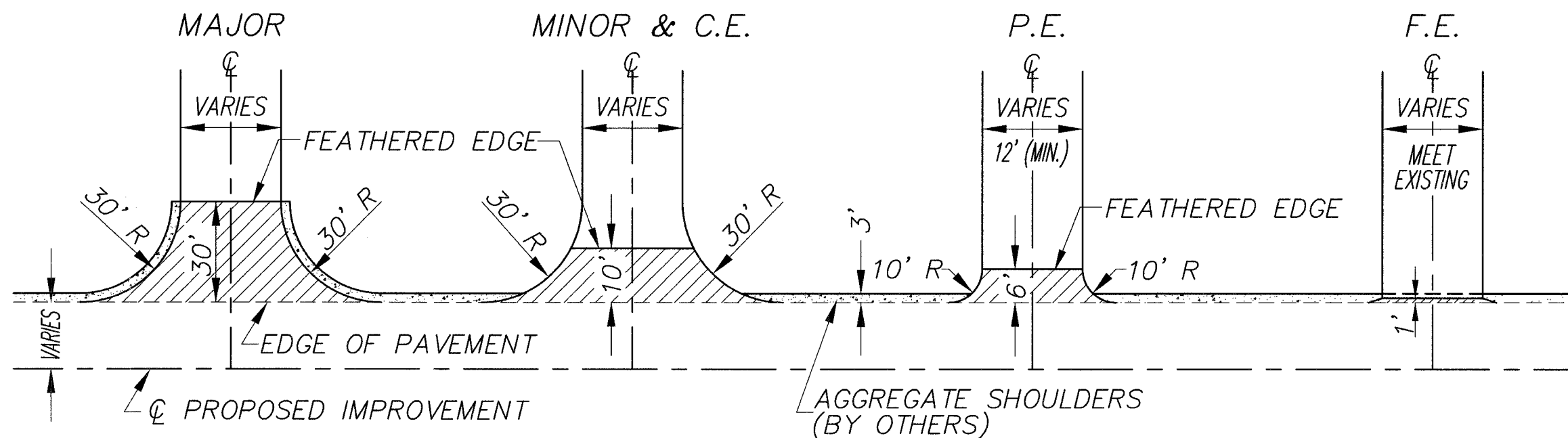
COUNTY	ROUTE	SECTION	TOTAL SHEETS	SHEET NO.
ADAMS	FAS 1589	06-00197-00-RS	10	10

SIDE ROAD & ENTRANCE DETAILS

PROJECT NO. RS-1589(104)

INTERSECTION DETAILS

ENTRANCE DETAILS



SCHEDULE - BCSC, SUPER., MIX "C" N50

	NO.	TONS/	TONS
PE	21	2	42
CE/CEM	9	9	81
MINOR ROAD	4	9	36
MAJOR ROAD	5	15	75
MAILBOXES	10	3	30
TOTAL			264

