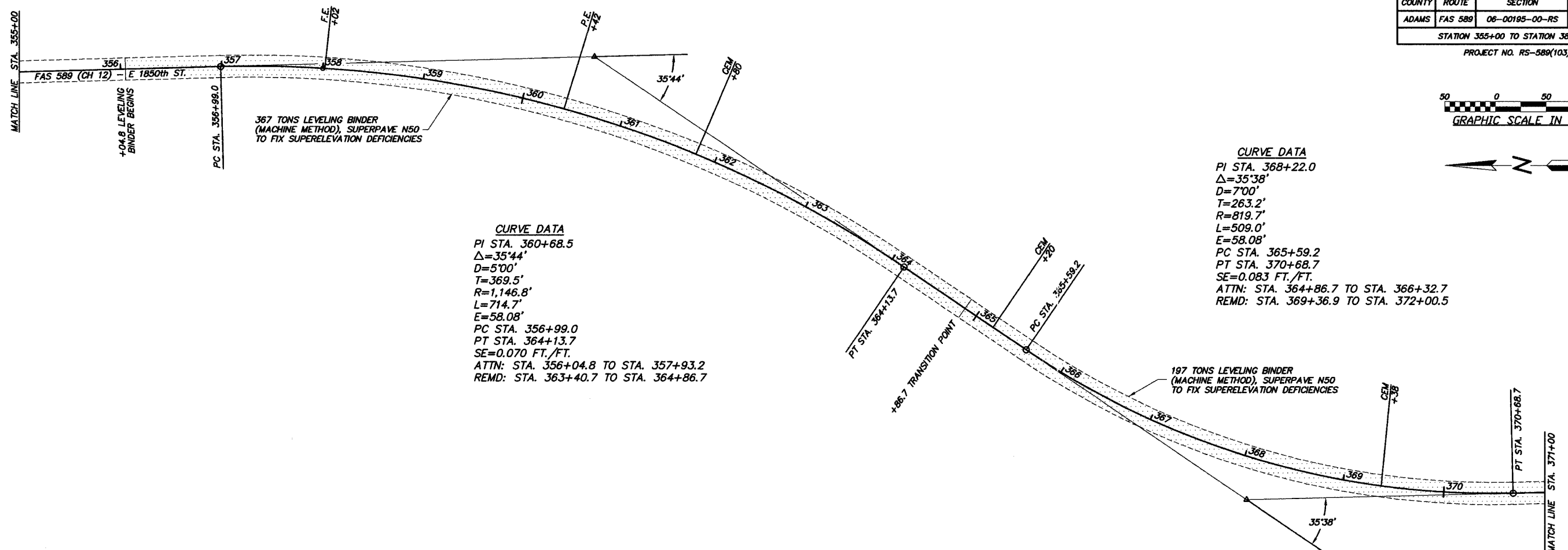
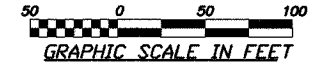


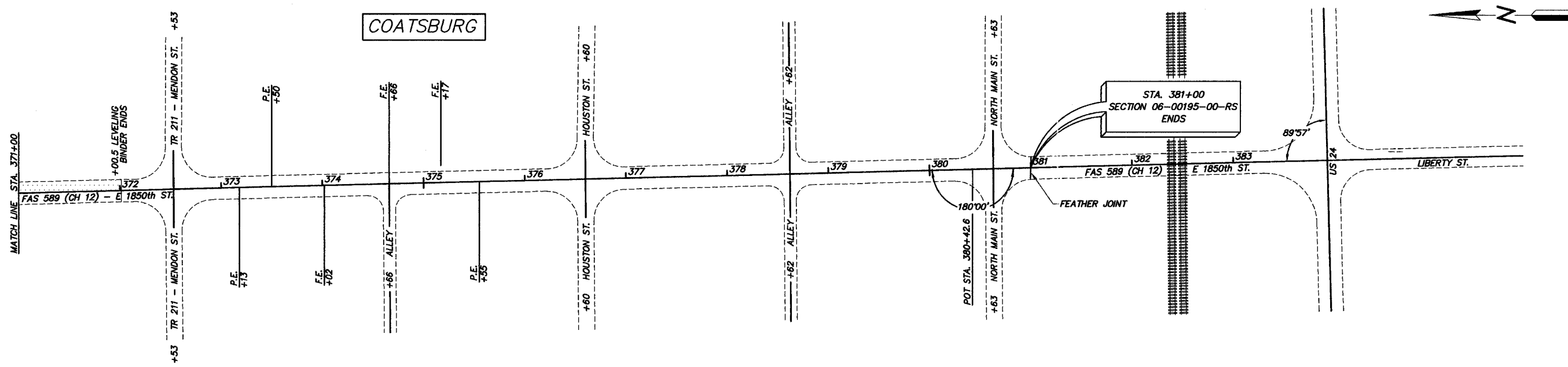
COUNTY	ROUTE	SECTION	TOTAL SHEETS	SHEET NO.
ADAMS	FAS 589	06-00195-00-RS	16	13

STATION 355+00 TO STATION 383+93  
PROJECT NO. RS-589(103)



**CURVE DATA**  
 PI STA. 360+68.5  
 $\Delta=35^{\circ}44'$   
 $D=5^{\circ}00'$   
 $T=369.5'$   
 $R=1,146.8'$   
 $L=714.7'$   
 $E=58.08'$   
 PC STA. 356+99.0  
 PT STA. 364+13.7  
 $SE=0.070$  FT./FT.  
 ATTN: STA. 356+04.8 TO STA. 357+93.2  
 REMD: STA. 363+40.7 TO STA. 364+86.7

**CURVE DATA**  
 PI STA. 368+22.0  
 $\Delta=35^{\circ}38'$   
 $D=7^{\circ}00'$   
 $T=263.2'$   
 $R=819.7'$   
 $L=509.0'$   
 $E=58.08'$   
 PC STA. 365+59.2  
 PT STA. 370+68.7  
 $SE=0.083$  FT./FT.  
 ATTN: STA. 364+86.7 TO STA. 366+32.7  
 REMD: STA. 369+36.9 TO STA. 372+00.5



COATSBURG

STA. 381+00  
SECTION 06-00195-00-RS  
ENDS