

COUNTY	ROUTE	SECTION	TOTAL SHEETS	SHEET NO.
ADAMS	FAS 589	06-00195-00-RS	16	1

INDEX OF SHEETS:

SHEET NO.	SHEET
1	TITLE SHEET
2	SUMMARY OF QUANTITIES GENERAL NOTES TRAFFIC CONTROL
3	TYPICAL CROSS SECTIONS
4-13	PLAN SHEETS
14	BRIDGE RESURFACING DETAIL (SN 001-3319)
15	BRIDGE RESURFACING DETAIL (SN 001-3311)
16	SIDE ROAD & ENTRANCE DETAILS BUTT JOINT DETAIL
STANDARD 701301-02	
STANDARD 701306-01	
STANDARD 702001-06	
STANDARD BLR 21-6	
STANDARD BLR 24-1	

STATE OF ILLINOIS
DEPARTMENT OF TRANSPORTATION
DIVISION OF HIGHWAYS
PLANS FOR PROPOSED

SURFACE TRANSPORTATION/RURAL PROGRAM
LOCAL AGENCY PAVEMENT PRESERVATION

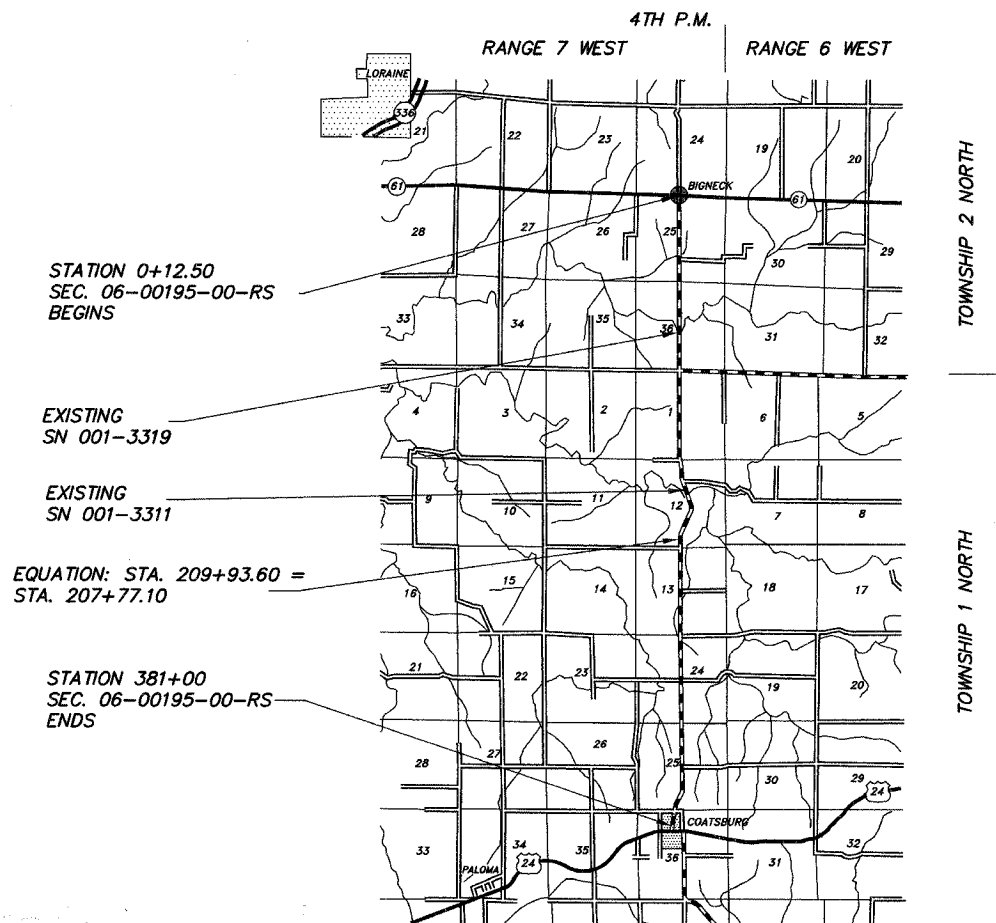
(C.H. 12) FAS 589 SECTION 06-00195-00-RS ADAMS COUNTY
PROJECT NO. RS-589(103) JOB NO. C-96-223-06



PROPOSED IMPROVEMENT MARKED THUS —

THESE PLANS WERE PREPARED BY ME OR BY A FULL-TIME MEMBER OF MY STAFF WORKING UNDER MY PERSONAL SUPERVISION.

SUBMITTED BY *Richard A. Clinger* DATE 3-23-06
COUNTY ENGINEER
LICENSE NO. 062-032961
LIC. EXPIRES 11/30/2007



LOCATION MAP

FUNCTIONAL CLASS: MAJOR COLLECTOR (NON-URBAN)
ADT=800

PROPOSED IMPROVEMENT CONSISTS OF PLACING 2" POLYMERIZED BITUMINOUS CONCRETE SURFACE COURSE, SUPERPAVE, MIX "C", N50 ON THE EXISTING 22' ROADWAY WITH OTHER MISCELLANEOUS CONSTRUCTION

- UTILITIES:
- J.U.L.I.E. ————— 1-800-892-0123
 - ADAMS TELEPHONE CO-OP ————— GOLDEN, IL
 - ADAMS RURAL ELECTRICAL CO-OP ————— CAMP POINT, IL
 - AMEREN CIPS ————— QUINCY, IL
 - NORTHERN ILLINOIS GAS ————— CARTHAGE, IL
 - ABS WATER DISTRICT ————— GOLDEN, IL

GROSS LENGTH:
FAS 589 (CH 12)
STA. 0+12.50 TO STA. 381+00.00 = 38,087.50 FT.
EQUATION:
STA. 209+96.60 = STA. 207+77.10 = - 216.50 FT.
NET LENGTH TO BE IMPROVED: 37,871.00 FT. = 7.173 MILES

APPROVED *Mark 23* 2006
Richard A. Clinger
COUNTY ENGINEER

PASSED *April 13* 2006
W.R. Jones
DISTRICT ENGINEER OF CONSTRUCTION

PASSED *4-12* 2006
Jerry J. ...
DISTRICT ENGINEER OF LOCAL ROADS AND STREETS

RELEASING FOR BID BASED ON LIMITED REVIEW *4-12* 2006
Christina M. ...
DEPUTY DIRECTOR OF HIGHWAYS
REGION FOUR ENGINEER

STATE OF ILLINOIS
DEPARTMENT OF TRANSPORTATION

CONTRACT NO. 93418

GENERAL NOTES

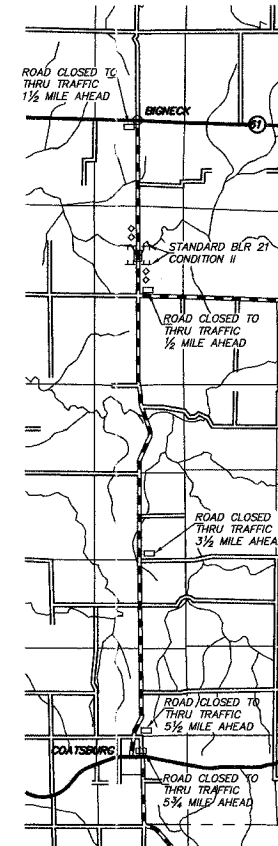
- WHERE SECTION OR SUB-SECTION STONES, USGS BENCH MARK MONUMENTS, AND U.S. ARMY CORPS OF ENGINEERS SURVEY MARKERS ARE ENCOUNTERED, THE ENGINEER SHALL BE NOTIFIED BEFORE SUCH STONES AND MONUMENTS ARE REMOVED. THE CONTRACTOR SHALL PROTECT AND CAREFULLY PRESERVE ALL PROPERTY MARKS UNTIL AN OWNER, AN AUTHORIZED SURVEYOR OR THEIR REPRESENTATIVE HAS WITNESSED OR OTHERWISE REFERENCED THE PROPERTY MARKS LOCATION.
- ALL PRIVATELY OWNED UTILITIES, UNLESS OTHERWISE SPECIFIED, WILL BE MOVED BY THEIR RESPECTIVE OWNERS WHERE REQUIRED. THE FOLLOWING UTILITY COMPANIES HAVE FACILITIES WITHIN THE LIMITS OF CONSTRUCTION:
 - ADAMS TELEPHONE CO-OP
 - ADAMS RURAL ELECTRICAL CO-OP
 - NORTHERN ILLINOIS GAS
 - ABS WATER DISTRICT
 - AMEREN CIPS
- THE NOMINAL THICKNESS FOR THE LEVELING BINDER, SURFACE COURSES AND AGGREGATE SHOULDERS ARE SHOWN ON THE TYPICAL SECTIONS, STANDARDS, SCHEDULES OR SPECIAL DETAILS. THE CONSTRUCTED THICKNESS OF THE ABOVE ITEMS SHALL NOT BE LESS THAN 90% OF THE NOMINAL THICKNESS AT ANY LOCATION. THE THICKNESS OF BITUMINOUS MIXTURE SHOWN ON THE PLANS IS THE NOMINAL THICKNESS. DEVIATIONS FROM THE NOMINAL THICKNESS WILL BE PERMITTED WHEN SUCH DEVIATIONS OCCUR DUE TO IRREGULARITIES IN THE EXISTING SURFACE OR BASE WHICH THE BITUMINOUS MIXTURE IS PLACED.
- THE CONTRACTOR SHALL BE RESPONSIBLE FOR DETERMINING THE LOCATION AND ELEVATION OF ALL EXISTING UTILITIES AND TO NOTIFY ALL UTILITY COMPANIES PRIOR TO THE BEGINNING OF CONSTRUCTION. THIS WILL BE CONSIDERED INCIDENTAL TO THE CONTRACT.
- APPLICATION RATES SHALL BE AS FOLLOWS UNLESS OTHERWISE SPECIFIED BY THE ENGINEER:
 - BITUMINOUS MIXTURES
112 LBS PER SQUARE YARD
 - BITUMINOUS MATERIALS (PRIME COAT)
0.05-0.10 GALLON PER SQUARE YARD ON PCC OR BITUMINOUS CONCRETE
 - 0.25-0.35 GALLON PER SQUARE YARD ON AGGREGATE
 - AGGREGATE (PRIME COAT)
4 LBS PER SQUARE YARD
- PERMANENT & TEMPORARY PAVEMENT MARKING TO BE DONE BY OTHERS. SHORT TERM PAVEMENT MARKING IS INCLUDED IN THE CONTRACT. THE REMOVAL OF THE SHORT TERM PAVEMENT MARKING TAPE WILL BE DONE BY OTHERS UPON COMPLETION OF THE PERMANENT PAVEMENT MARKING.

COUNTY	ROUTE	SECTION	TOTAL SHEETS	SHEET NO.
ADAMS	FAS 589	06-00195-00-RS	16	2

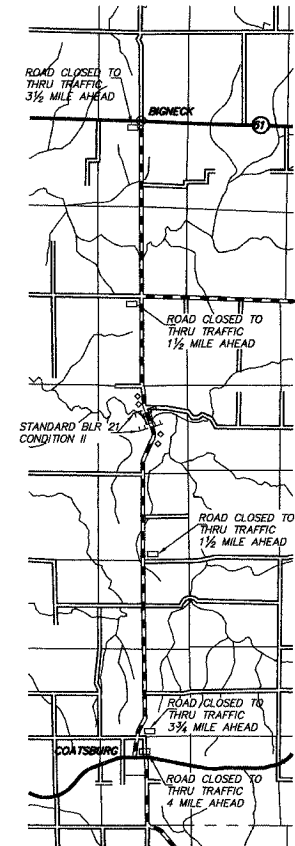
SUMMARY OF QUANTITIES - GENERAL NOTES

PROJECT NO. RS-589(103)

TRAFFIC CONTROL PLAN



STRUCTURE NO. 001-3319



STRUCTURE NO. 001-3311

SUMMARY OF QUANTITIES

QUANTITY	UNIT	ITEM	CODE NO.	SPECIAL PROVISIONS
354	TON	BITUMINOUS CONCRETE SURFACE COURSE, SUPERPAVE, MIX "C", N50	X4066414	*
10,200	TON	POLYMERIZED BITUMINOUS CONCRETE SURFACE COURSE, SUPERPAVE, MIX "C", N50	X4066514	*
1,360	TON	LEVELING BINDER (MACHINE METHOD), SUPERPAVE N50	X4066765	*
845	SQ. YD.	BRIDGE DECK WEARING SURFACE	Z0006300	*
8,837	GALLON	BITUMINOUS MATERIALS (PRIME COAT)	40600100	*
177	TON	AGGREGATE (PRIME COAT)	40600300	*
30	SQ. YD.	BITUMINOUS SURFACE REMOVAL - BUTT JOINT	40600980	*
15	SQ. YD.	TEMPORARY RAMP	40600990	*
366	SQ. YD.	BITUMINOUS SURFACE REMOVAL (VARIABLE DEPTH)	44000030	*
845	SQ. YD.	BITUMINOUS CONCRETE REMOVAL (DECK)	44000910	*
845	SQ. YD.	WATERPROOFING MEMBRANE SYSTEM	58100200	*
1	L. SUM	MOBILIZATION	67100100	
1	L. SUM	TRAFFIC CONTROL AND PROTECTION	70101700	*
3,442	FOOT	SHORT TERM PAVEMENT MARKING	70300100	*

CONSTRUCTION TYPE CODE: I000

BRIDGE SURFACE REMOVAL AND WATERPROOFING

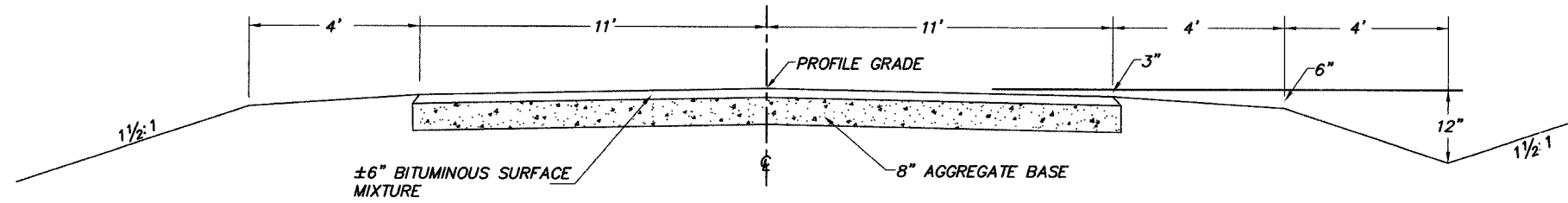
TRAFFIC CONTROL NOTES

- THE DETAILS SHOWN ARE FOR THE ROAD CLOSURES ONLY. THE REQUIRED ROAD CONSTRUCTION SIGNS AS DESCRIBED IN THE SPECIAL PROVISIONS WILL ALSO BE IN PLACE DURING ROAD CLOSURES.
- CONCURRENT RESURFACING OPERATIONS AND A ROAD CLOSURE WILL BE ALLOWED.
- ONLY ONE STRUCTURE WILL BE ALLOWED TO BE CLOSED DURING THE COMPLETE WATERPROOFING PROCESS. CLOSURE OF THE OTHER STRUCTURE WILL BE ALLOWED ONCE THE WEARING SURFACE IS PLACED.
- THE REMOVAL OF THE EXISTING WEARING SURFACE MAY BE DONE CONCURRENTLY. THE ROADWAY MAY BE OPENED TO TRAFFIC ONCE WEARING SURFACE IS REMOVED AND APPROPRIATE TEMPORARY RAMPS AND BUMP SIGNS ARE IN PLACE.

TYPICAL CROSS SECTIONS

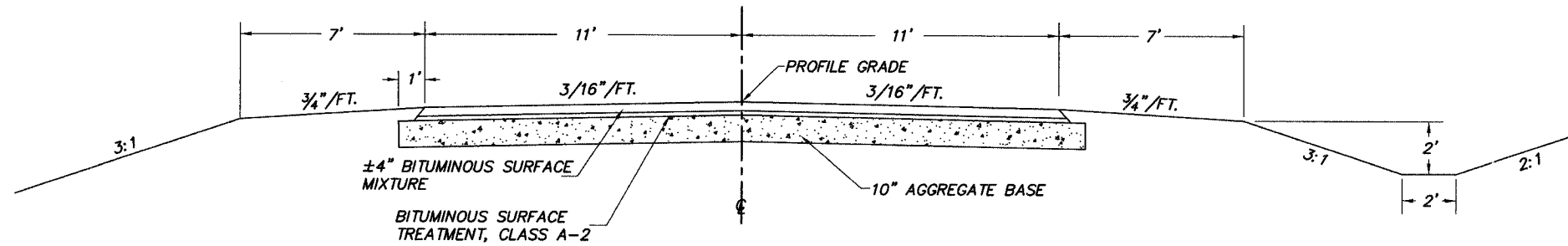
COUNTY	ROUTE	SECTION	TOTAL SHEETS	SHEET NO.
ADAMS	FAS 589	06-00195-00-RS	16	3

TYPICAL CROSS SECTIONS
PROJECT NO. RS-589(103)



EXISTING CROSS SECTION

BUILT AS: SECTION 340
STA. 0+00 TO STA. 76+00
STA. 84+00 TO STA. 180+00
STA. 184+00 TO STA. 381+00



EXISTING CROSS SECTION

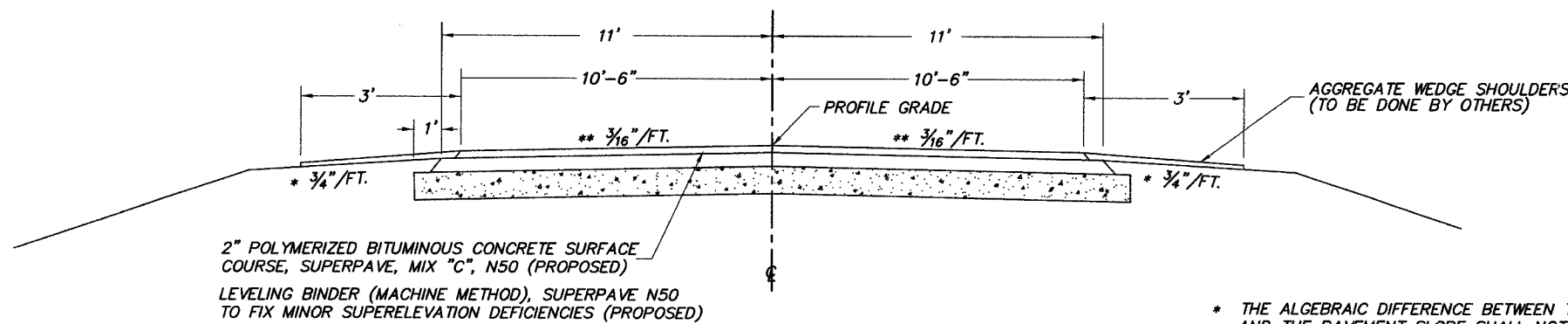
BUILT AS: SECTION 85-00109-00-BR
STA. 76+00 TO STA. 84+00
SECTION CBF 446
STA. 180+00 TO STA. 184+00

CLASS I BITUMINOUS MIXTURE REQUIREMENTS

ITEM	ASPHALT GRADE	AGG. COMPOSITION	ALLOWABLE RAP	VOIDS
POLY. SURFACE	SBS PG 64-28	IL-9.5 or 12.5 MIX C	0%	4.0% @ N50
SURFACE	PG 58-22	IL-9.5 or 12.5 MIX C	15%	4.0% @ N50
LEVELING BINDER	PG 58-22	IL-12.5	15%	4.0% @ N50
BRIDGE WEARING SURF.	PG 58-22	IL-9.5 or 12.5 MIX C	15%	4.0% @ N50

LEVELING BINDER (MACHINE METHOD), SUPERPAVE N50
TO FIX MINOR SUPERELEVATION DEFICIENCIES

STA. TO STA.	TONS
162+18.5 TO 167+65.1	162
187+35.8 TO 197+06.7	382
201+85.7 TO 210+70.7	252
356+04.8 TO 364+86.7	367
364+86.7 TO 372+00.5	197
TOTAL	1,360

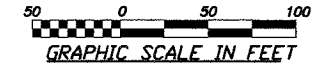


PROPOSED CROSS SECTION

STA. 0+12.50 TO STA. 381+00.00

* THE ALGEBRAIC DIFFERENCE BETWEEN THE SHOULDER SLOPE AND THE PAVEMENT SLOPE SHALL NOT EXCEED 10%

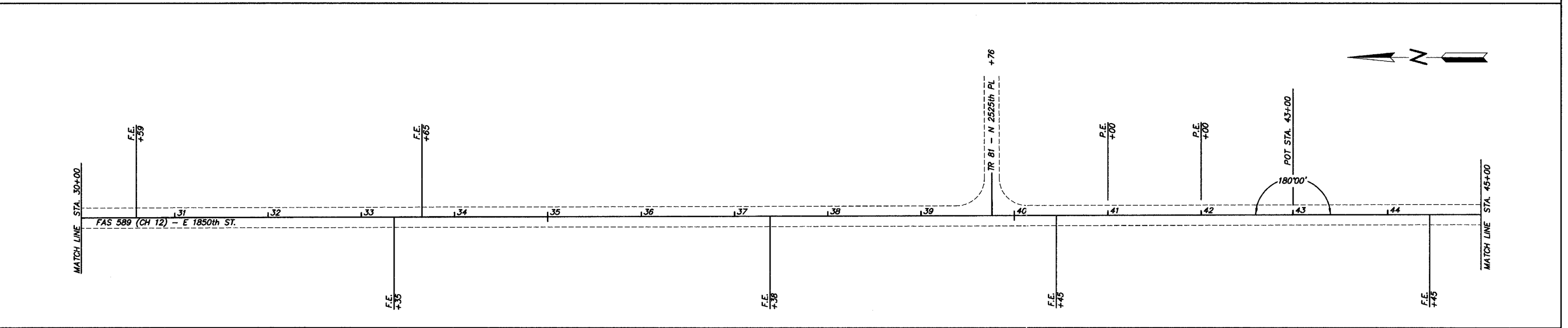
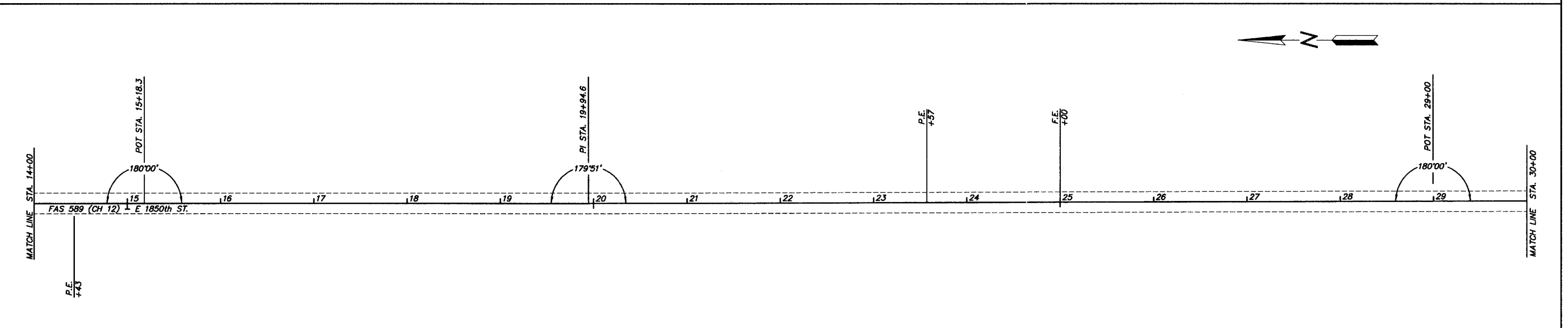
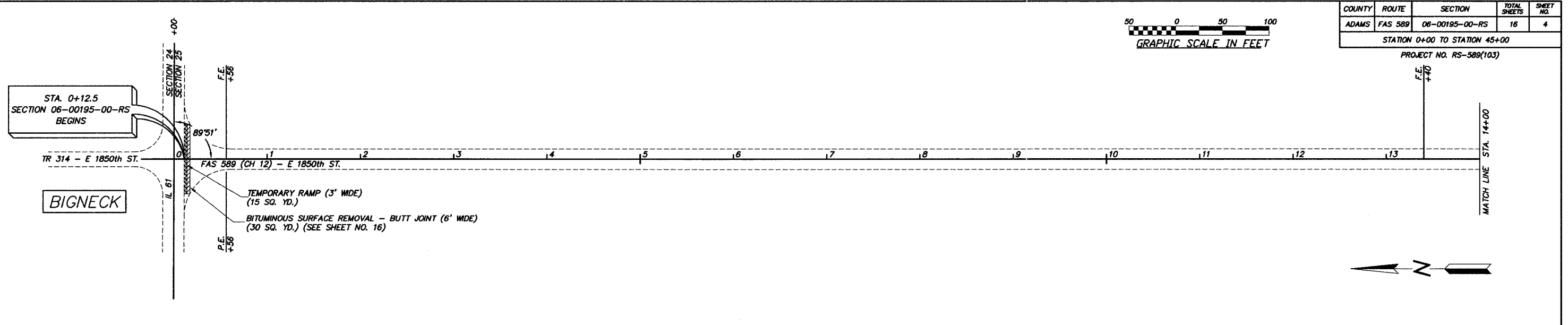
** CROWN DOES NOT APPLY IN AREA OF SUPER-ELEVATION OR SUPER-ELEVATION TRANSITION.



COUNTY	ROUTE	SECTION	TOTAL SHEETS	SHEET NO.
ADAMS	FAS 589	06-00195-00-RS	16	4

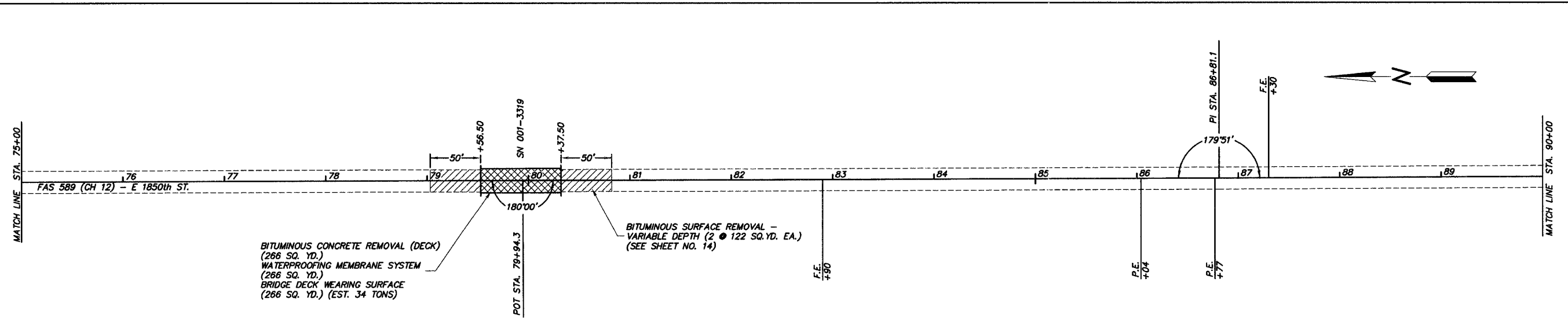
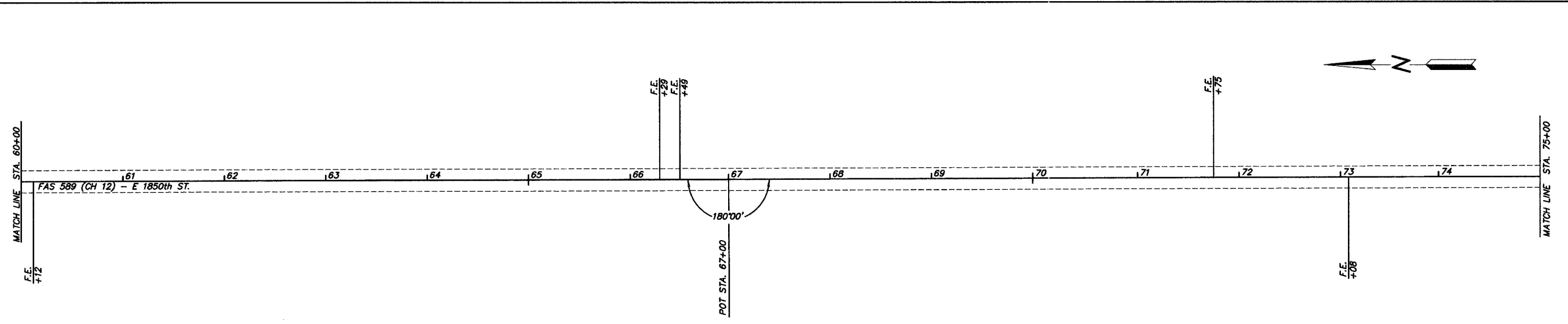
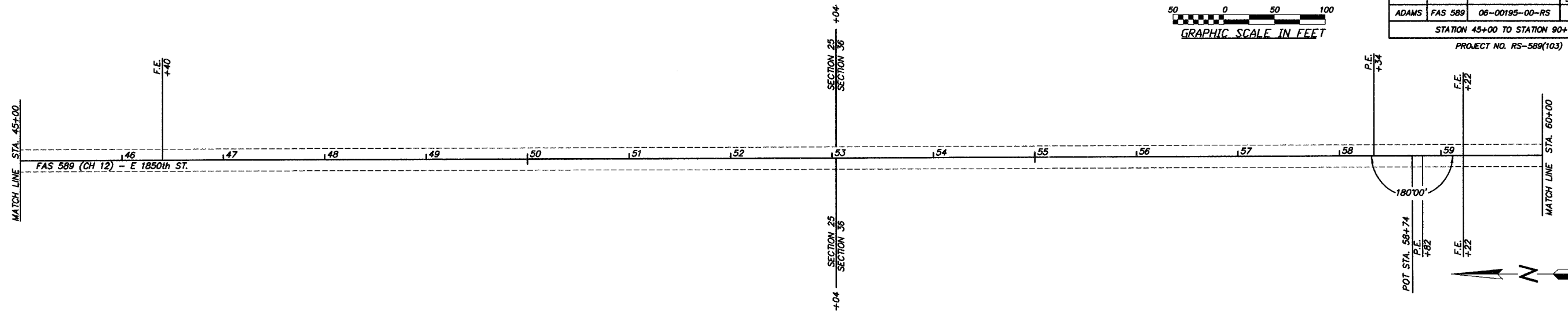
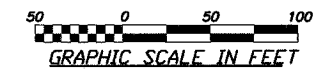
STATION 0+00 TO STATION 45+00

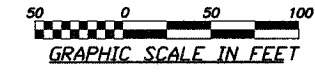
PROJECT NO. RS-589(103)



COUNTY	ROUTE	SECTION	TOTAL SHEETS	SHEET NO.
ADAMS	FAS 589	06-00195-00-RS	16	5

STATION 45+00 TO STATION 90+00
PROJECT NO. RS-589(103)

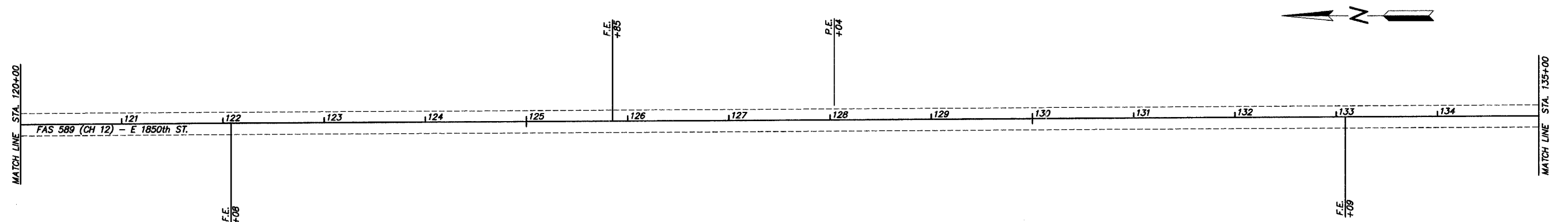
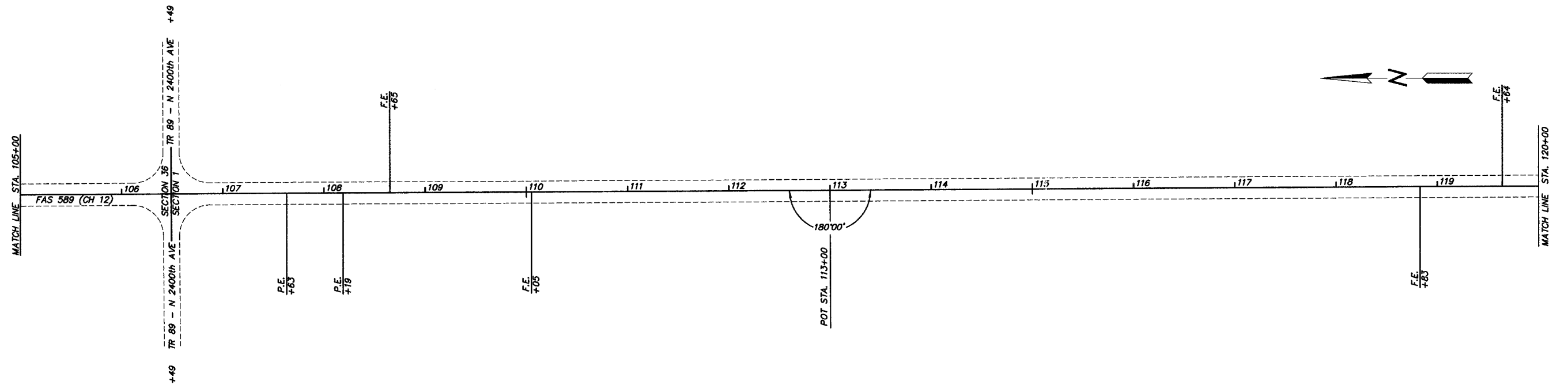
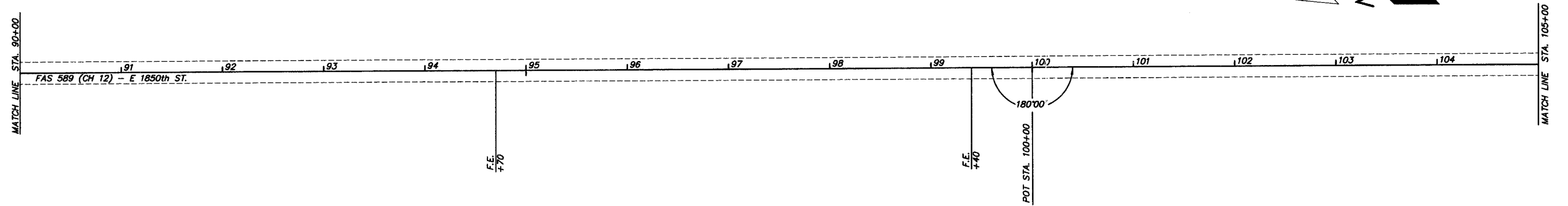


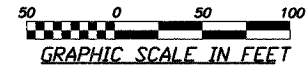


COUNTY	ROUTE	SECTION	TOTAL SHEETS	SHEET NO.
ADAMS	FAS 589	06-00195-00-RS	16	6

STATION 90+00 TO STATION 135+00

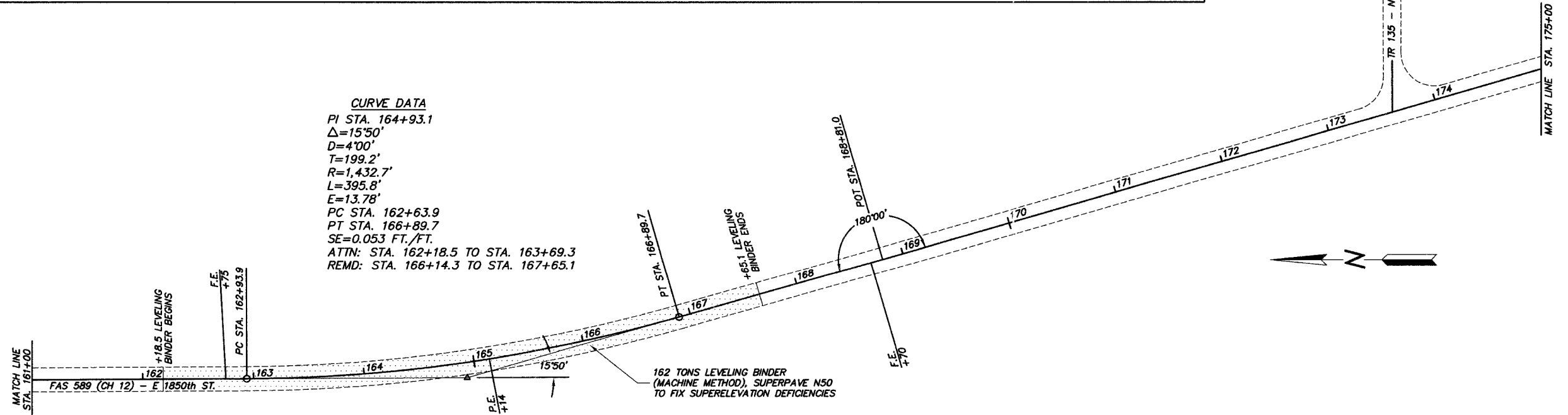
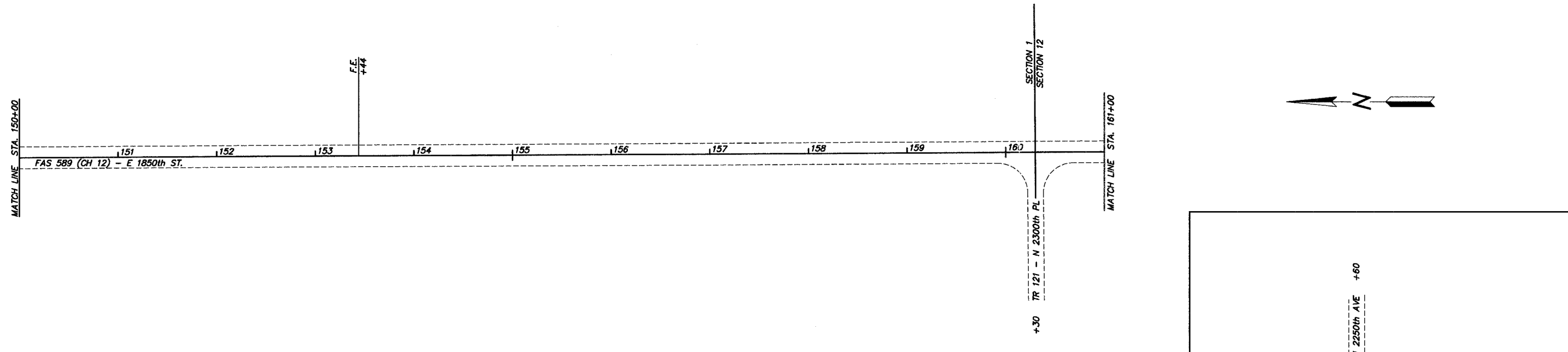
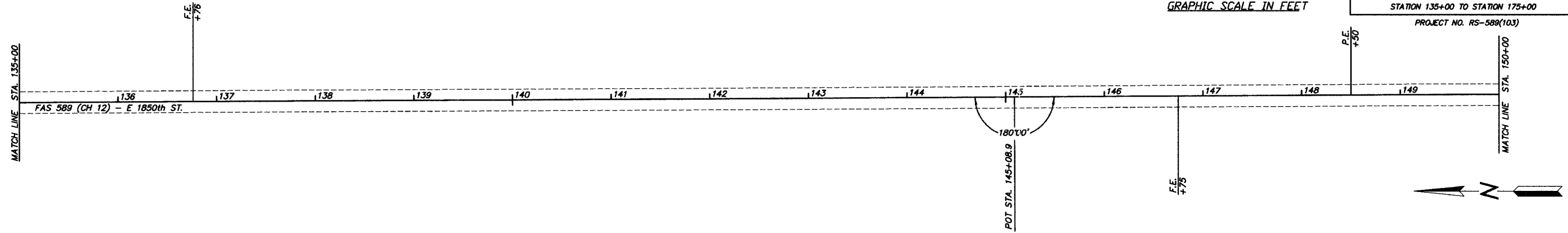
PROJECT NO. RS-589(103)





COUNTY	ROUTE	SECTION	TOTAL SHEETS	SHEET NO.
ADAMS	FAS 589	06-00185-00-RS	16	7

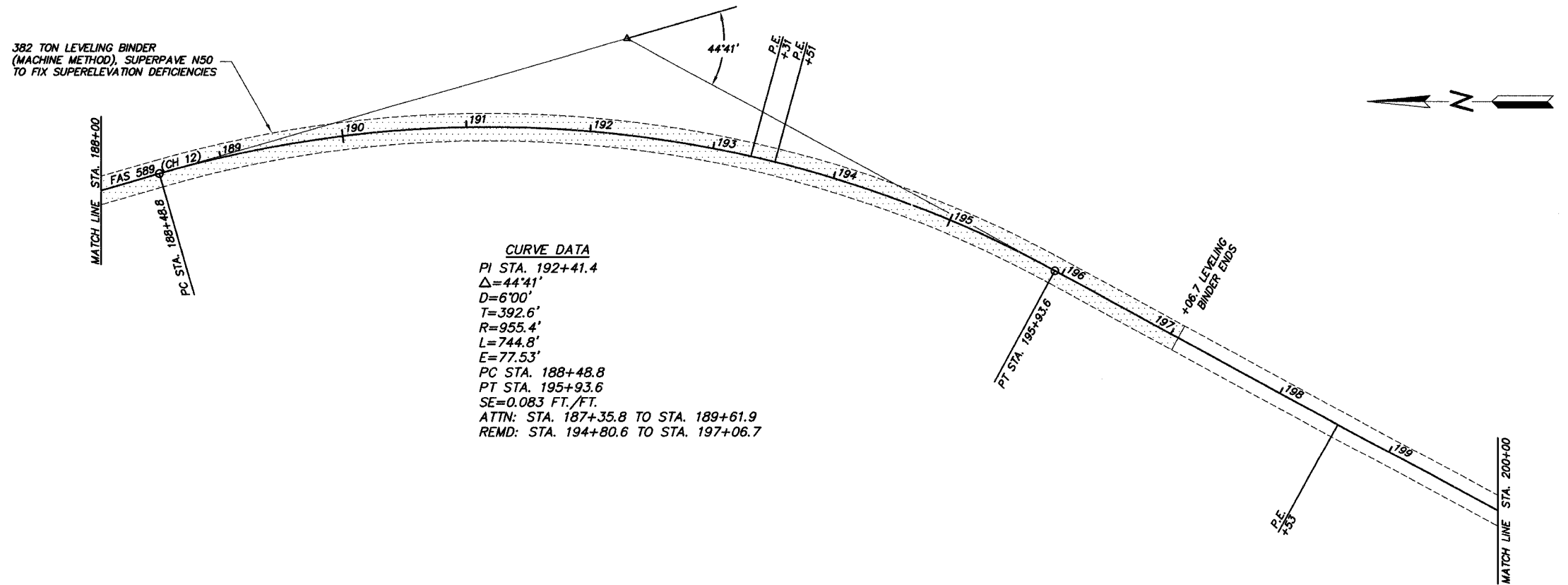
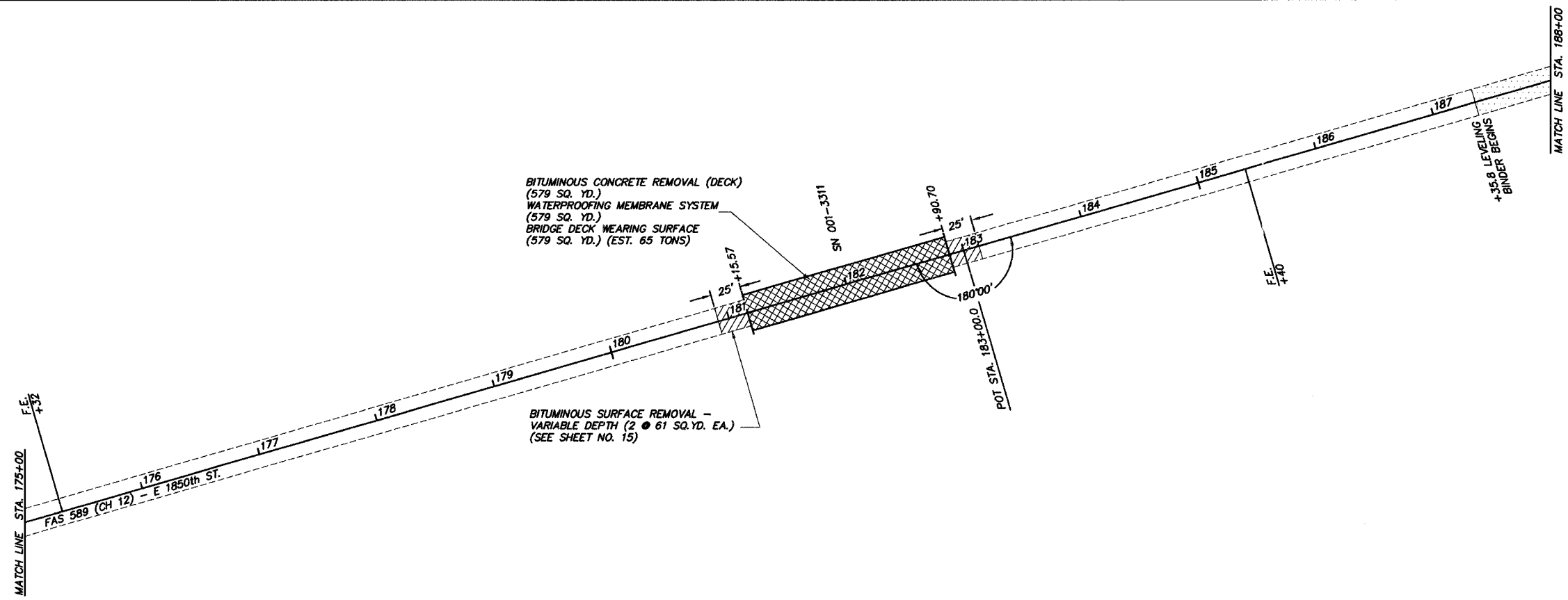
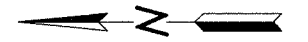
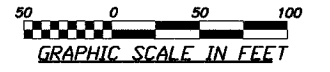
STATION 135+00 TO STATION 175+00
PROJECT NO. RS-589(103)



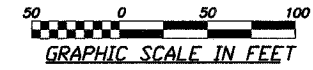
COUNTY	ROUTE	SECTION	TOTAL SHEETS	SHEET NO.
ADAMS	FAS 589	06-00195-00-RS	16	8

STATION 175+00 TO STATION 200+00

PROJECT NO. RS-589(103)



CURVE DATA
 PI STA. 192+41.4
 $\Delta=44^{\circ}41'$
 $D=6^{\circ}00'$
 $T=392.6'$
 $R=955.4'$
 $L=744.8'$
 $E=77.53'$
 PC STA. 188+48.8
 PT STA. 195+93.6
 $SE=0.083$ FT./FT.
 ATTN: STA. 187+35.8 TO STA. 189+61.9
 REMD: STA. 194+80.6 TO STA. 197+06.7

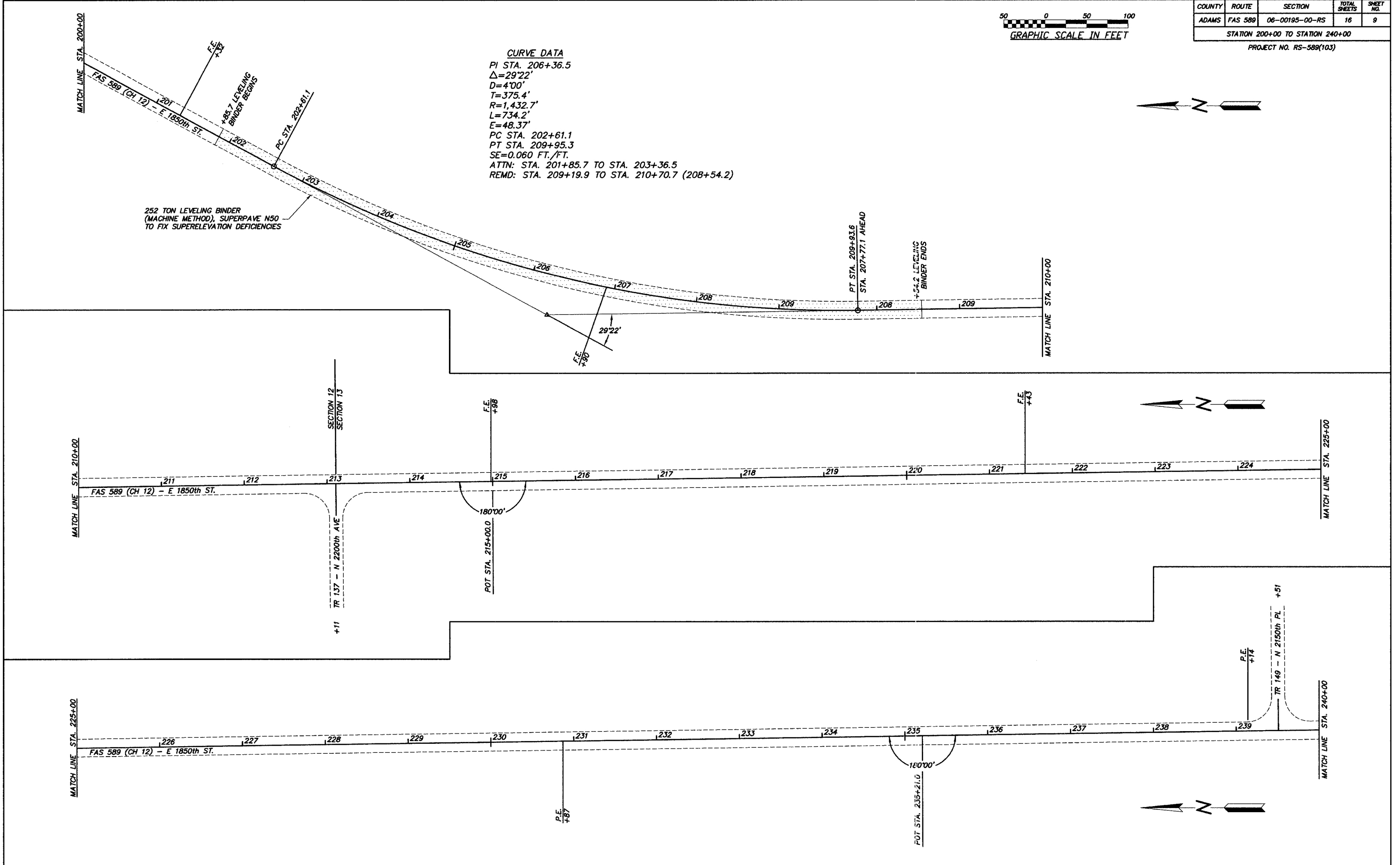


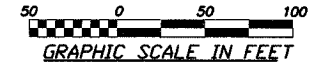
COUNTY	ROUTE	SECTION	TOTAL SHEETS	SHEET NO.
ADAMS	FAS 589	06-00195-00-RS	16	9

STATION 200+00 TO STATION 240+00
PROJECT NO. RS-589(103)

CURVE DATA
 PI STA. 206+36.5
 $\Delta=29^{\circ}22'$
 D=4'00"
 T=375.4'
 R=1,432.7'
 L=734.2'
 E=48.37'
 PC STA. 202+61.1
 PT STA. 209+95.3
 SE=0.060 FT./FT.
 ATTN: STA. 201+85.7 TO STA. 203+36.5
 REMD: STA. 209+19.9 TO STA. 210+70.7 (208+54.2)

252 TON LEVELING BINDER
 (MACHINE METHOD), SUPERPAVE N50
 TO FIX SUPERELEVATION DEFICIENCIES

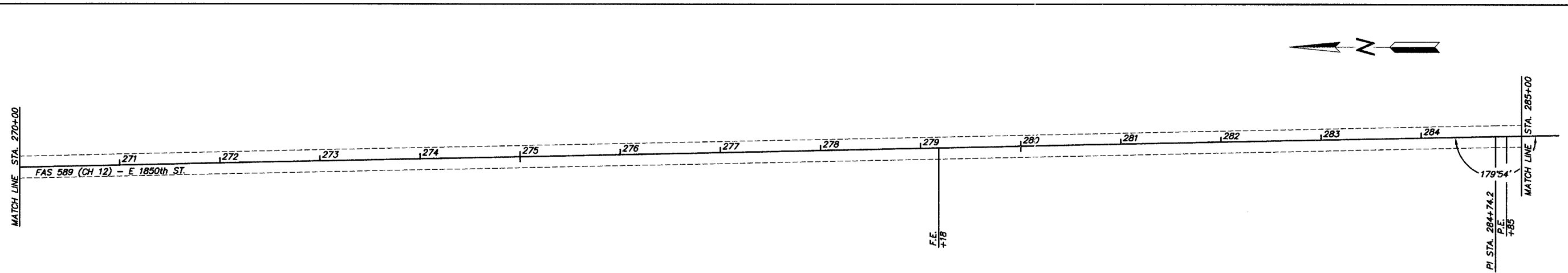
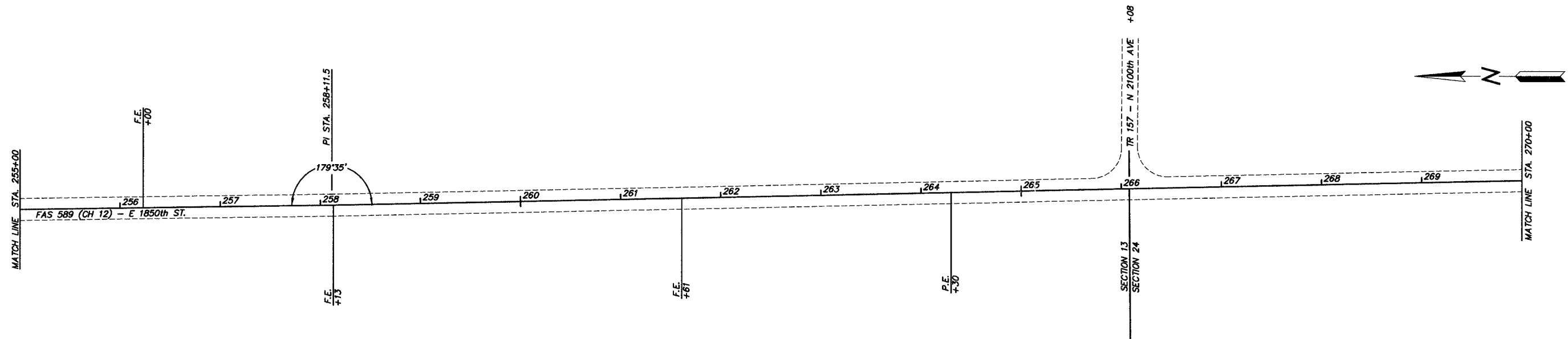
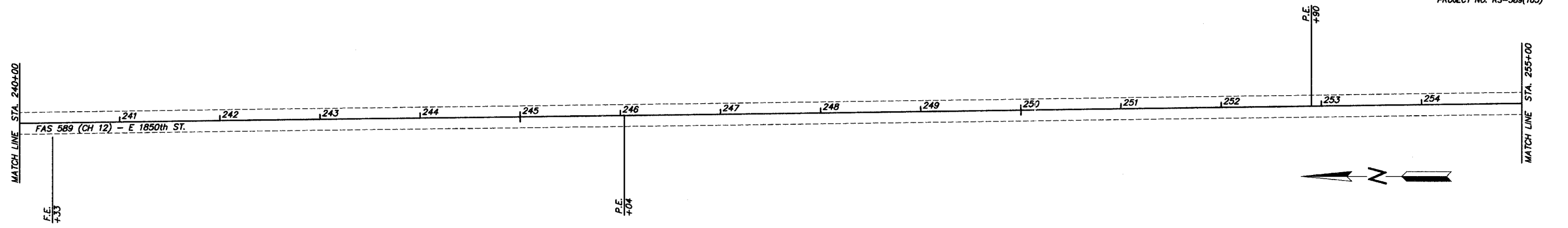




COUNTY	ROUTE	SECTION	TOTAL SHEETS	SHEET NO.
ADAMS	FAS 589	06-00195-00-RS	16	10

STATION 240+00 TO STATION 285+00

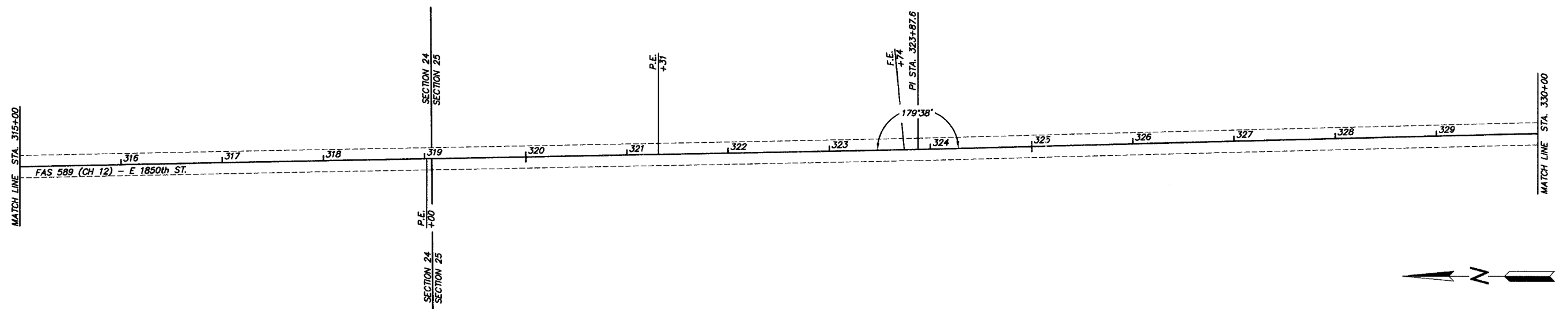
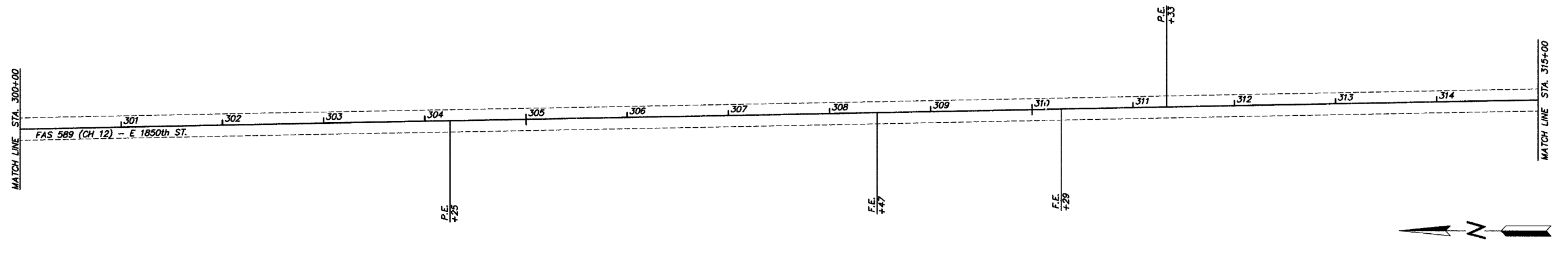
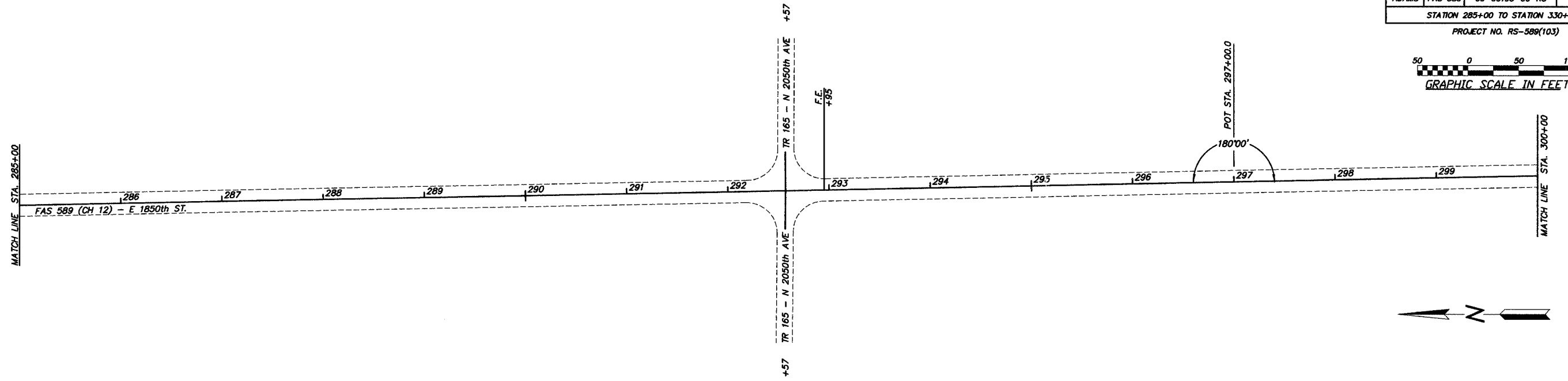
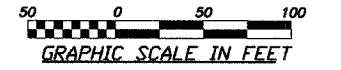
PROJECT NO. RS-589(103)



COUNTY	ROUTE	SECTION	TOTAL SHEETS	SHEET NO.
ADAMS	FAS 589	06-00195-00-RS	16	11

STATION 285+00 TO STATION 330+00

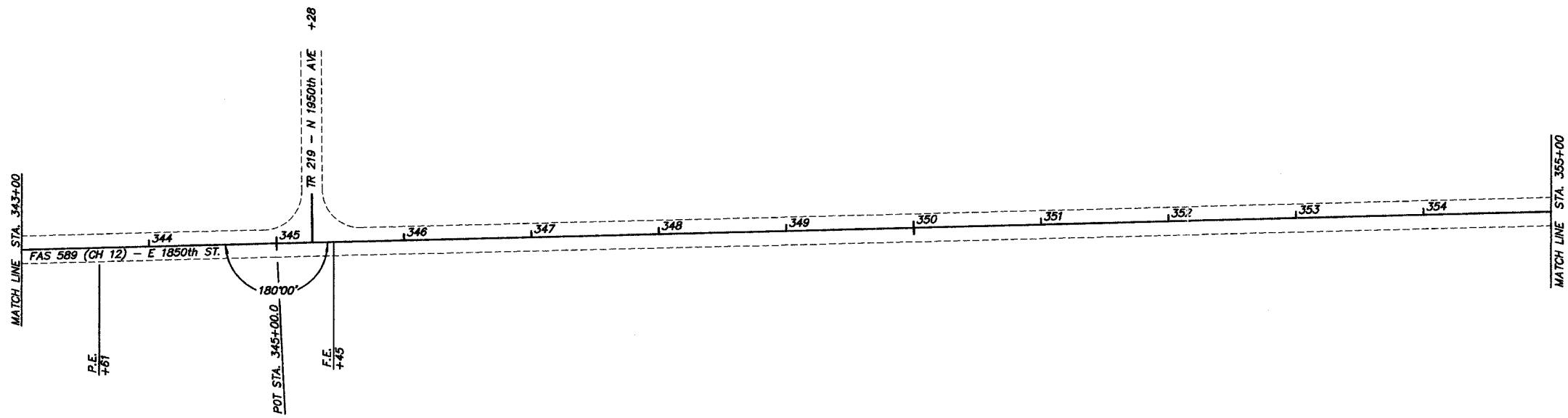
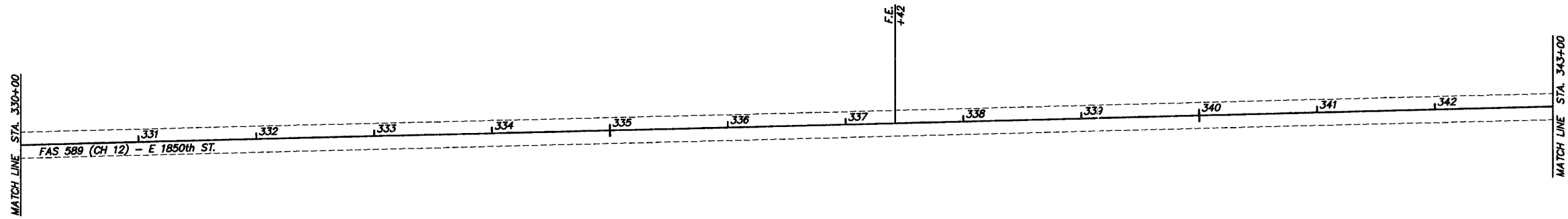
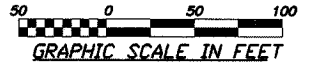
PROJECT NO. RS-589(103)



COUNTY	ROUTE	SECTION	TOTAL SHEETS	SHEET NO.
ADAMS	FAS 589	06-00195-00-RS	16	12

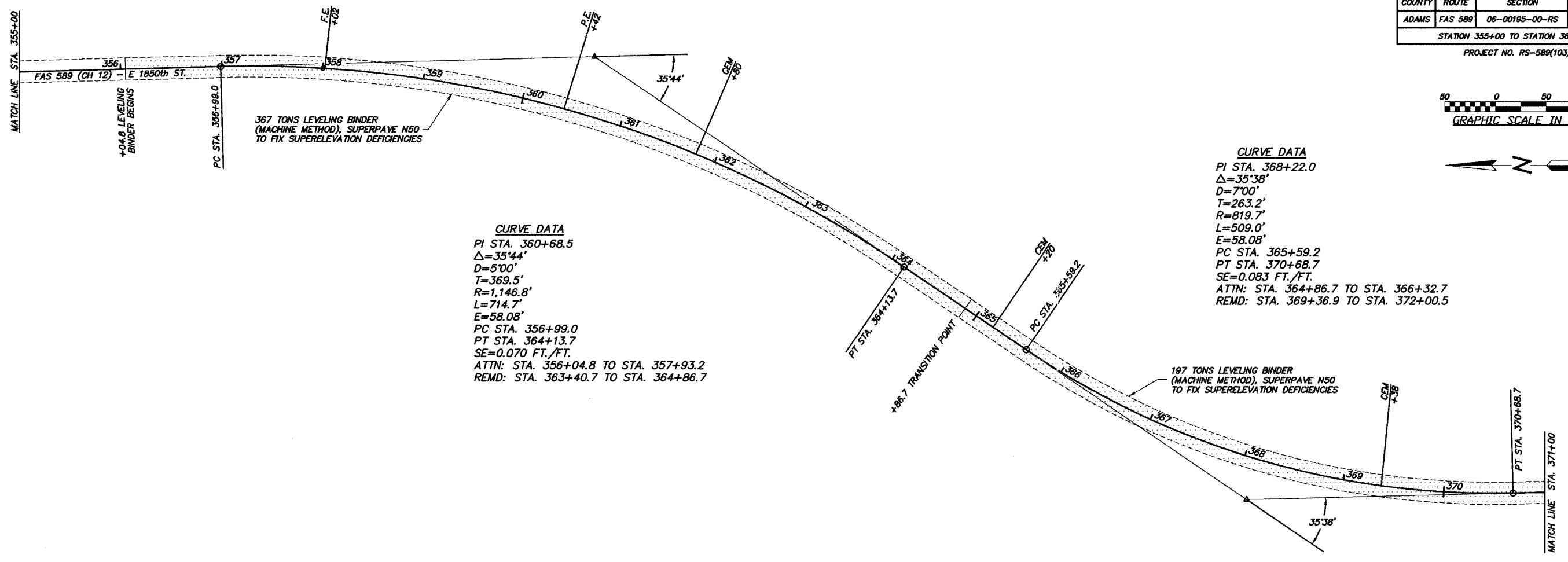
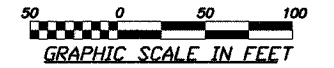
STATION 330+00 TO STATION 355+00

PROJECT NO. RS-589(103)



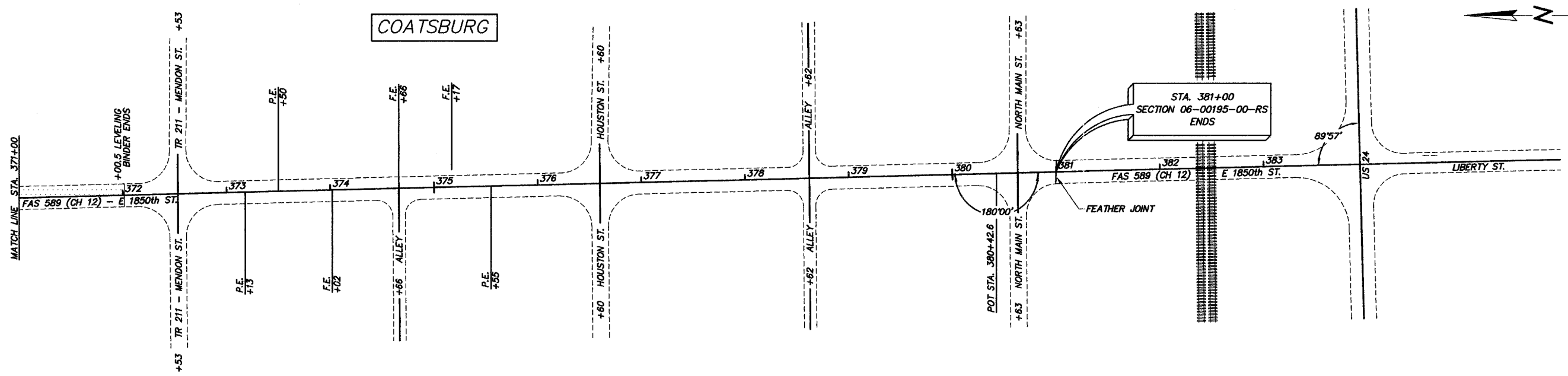
COUNTY	ROUTE	SECTION	TOTAL SHEETS	SHEET NO.
ADAMS	FAS 589	06-00195-00-RS	16	13

STATION 355+00 TO STATION 383+93
PROJECT NO. RS-589(103)



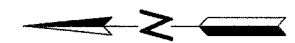
CURVE DATA
 PI STA. 360+68.5
 $\Delta=35^{\circ}44'$
 $D=5^{\circ}00'$
 $T=369.5'$
 $R=1,146.8'$
 $L=714.7'$
 $E=58.08'$
 PC STA. 356+99.0
 PT STA. 364+13.7
 $SE=0.070$ FT./FT.
 ATTN: STA. 356+04.8 TO STA. 357+93.2
 REMD: STA. 363+40.7 TO STA. 364+86.7

CURVE DATA
 PI STA. 368+22.0
 $\Delta=35^{\circ}38'$
 $D=7^{\circ}00'$
 $T=263.2'$
 $R=819.7'$
 $L=509.0'$
 $E=58.08'$
 PC STA. 365+59.2
 PT STA. 370+68.7
 $SE=0.083$ FT./FT.
 ATTN: STA. 364+86.7 TO STA. 366+32.7
 REMD: STA. 369+36.9 TO STA. 372+00.5



COATSBURG

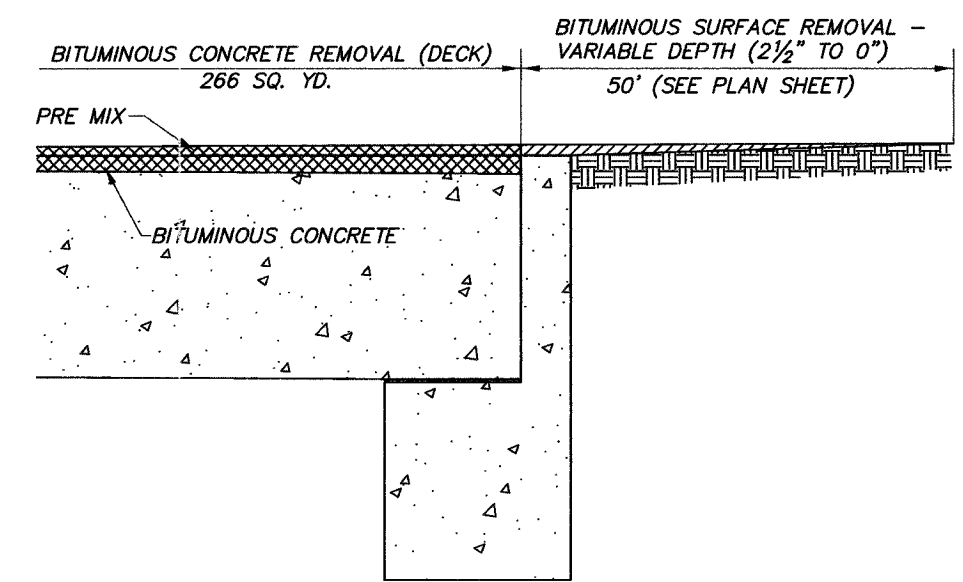
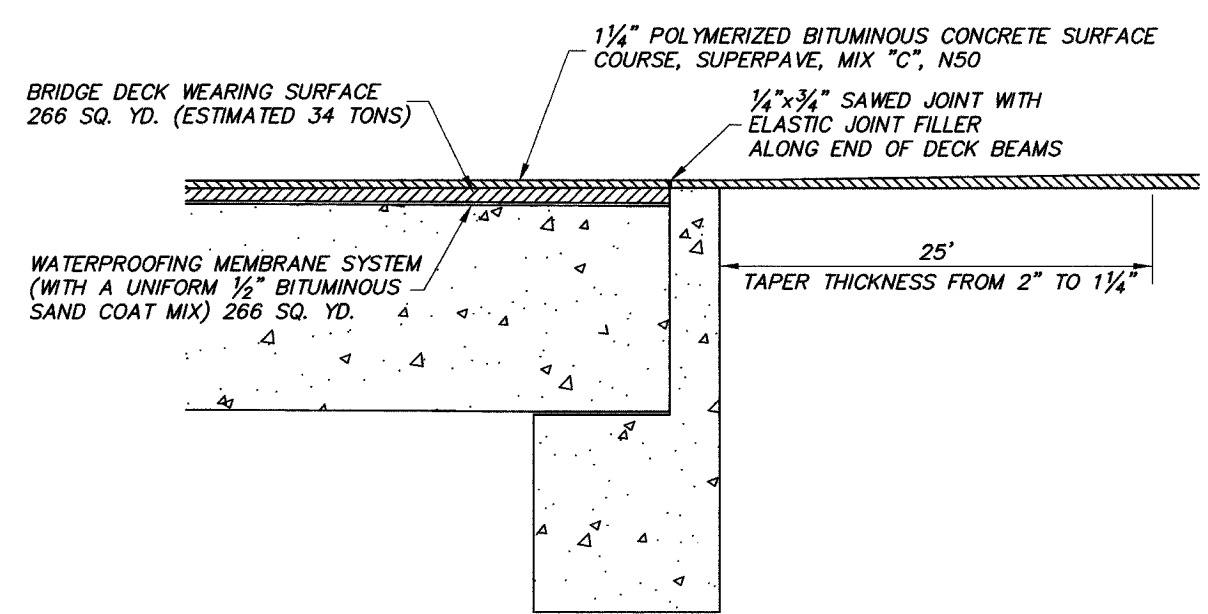
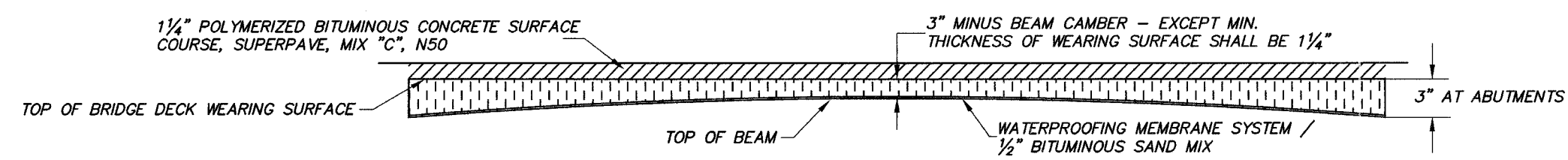
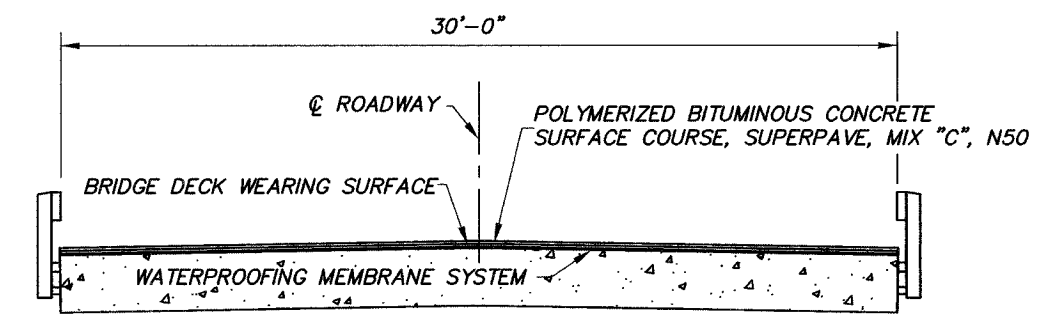
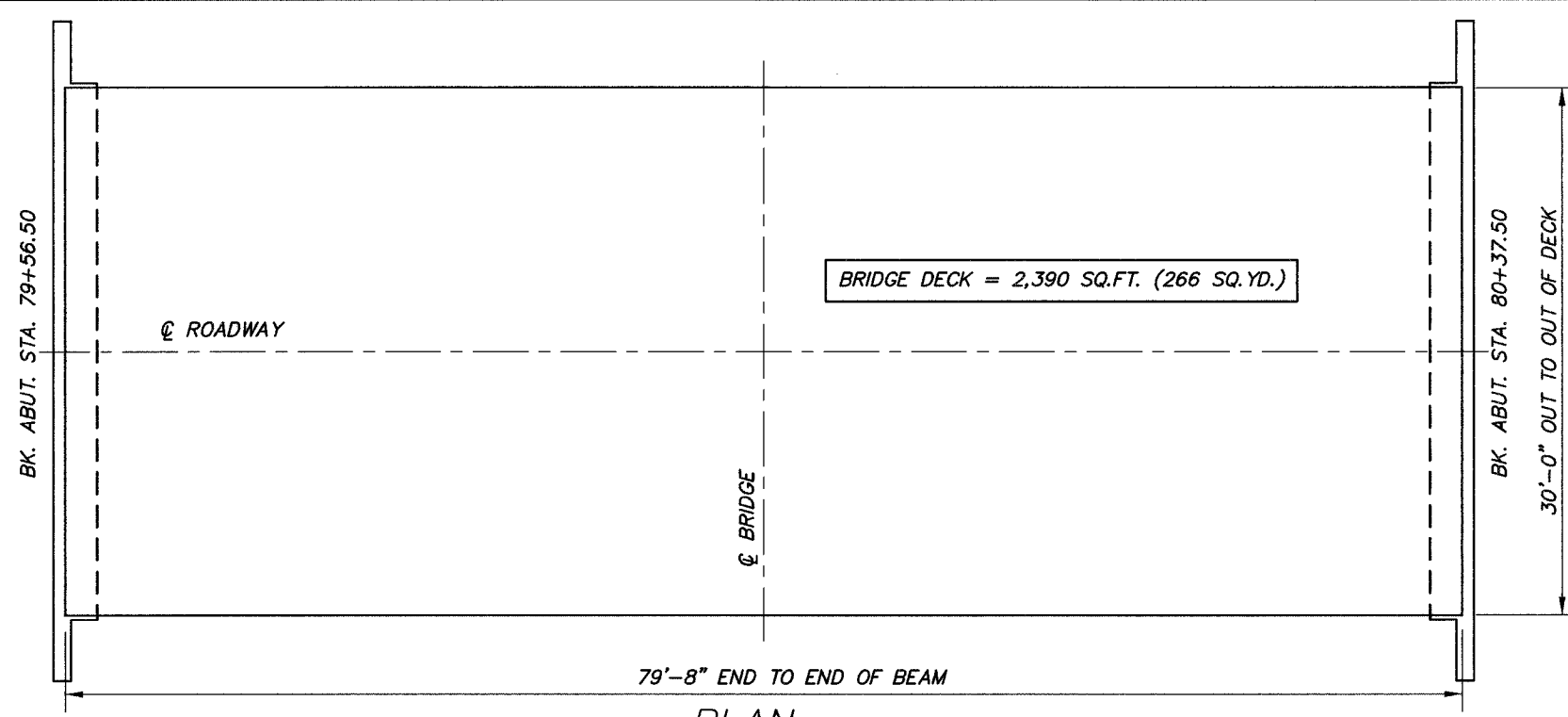
STA. 381+00
SECTION 06-00195-00-RS
ENDS



COUNTY	ROUTE	SECTION	TOTAL SHEETS	SHEET NO.
ADAMS	FAS 589	06-00195-00-RS	16	14

BRIDGE SURFACE REPLACEMENT (SN 001-3319)

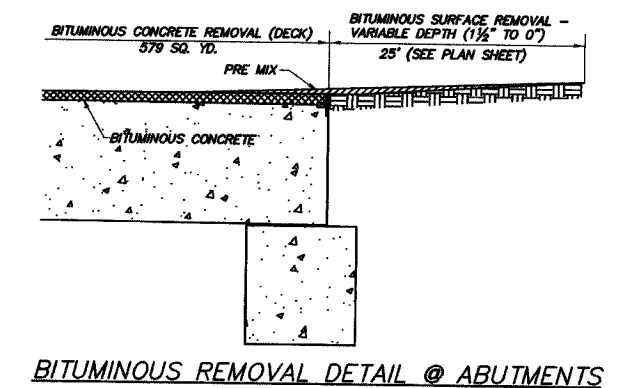
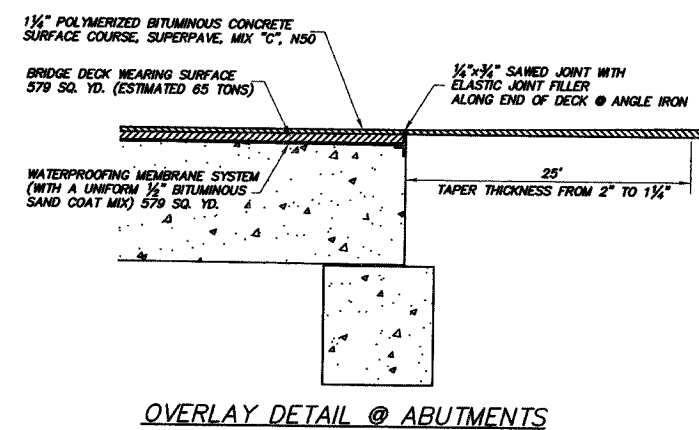
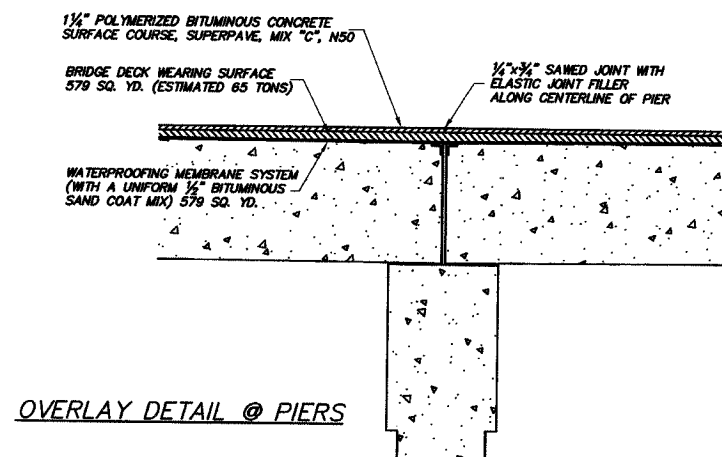
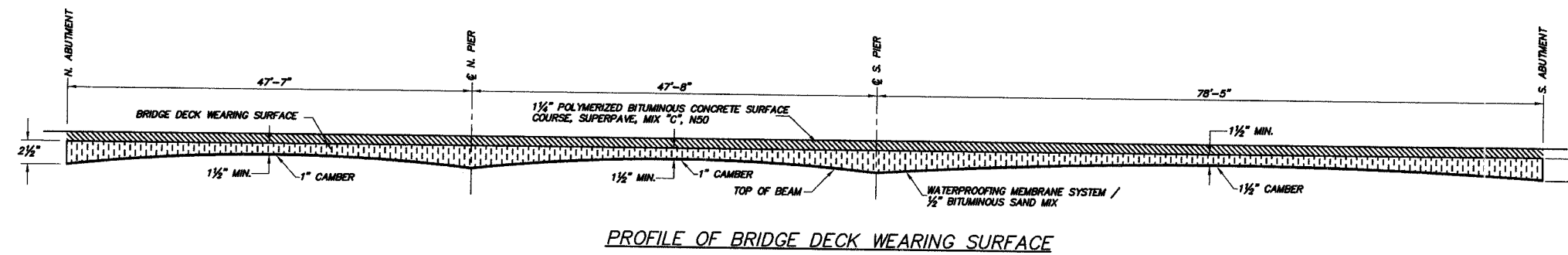
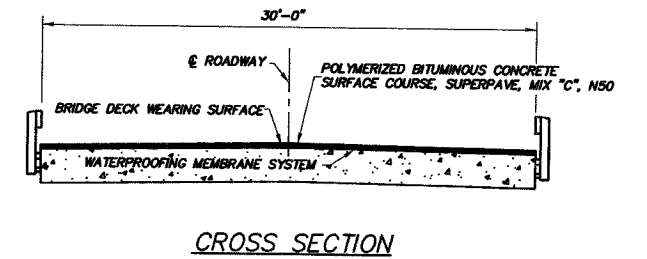
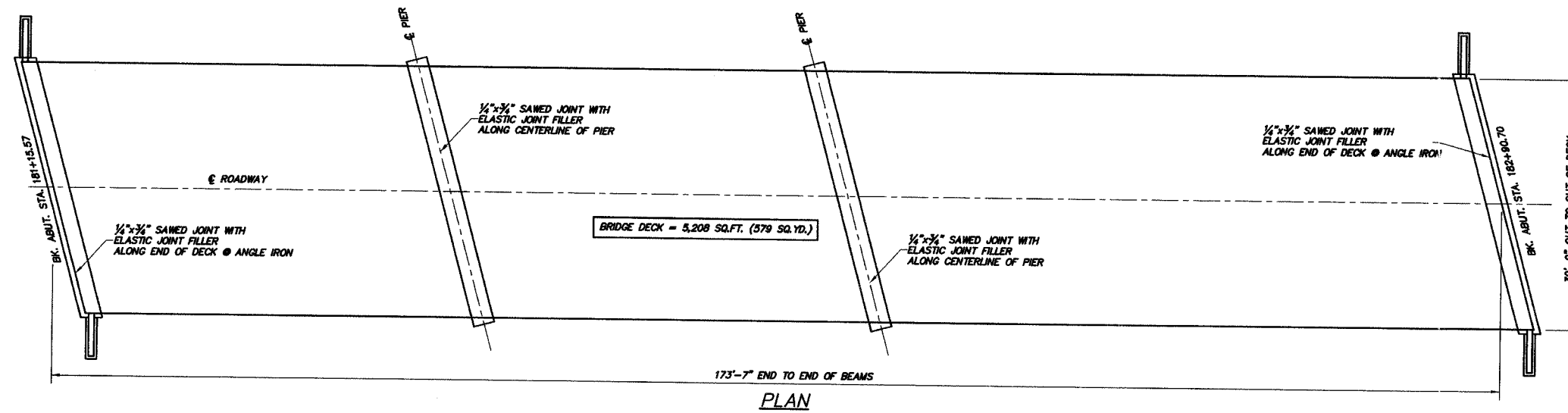
PROJECT NO. RS-589(103) 93418



OVERLAY DETAIL

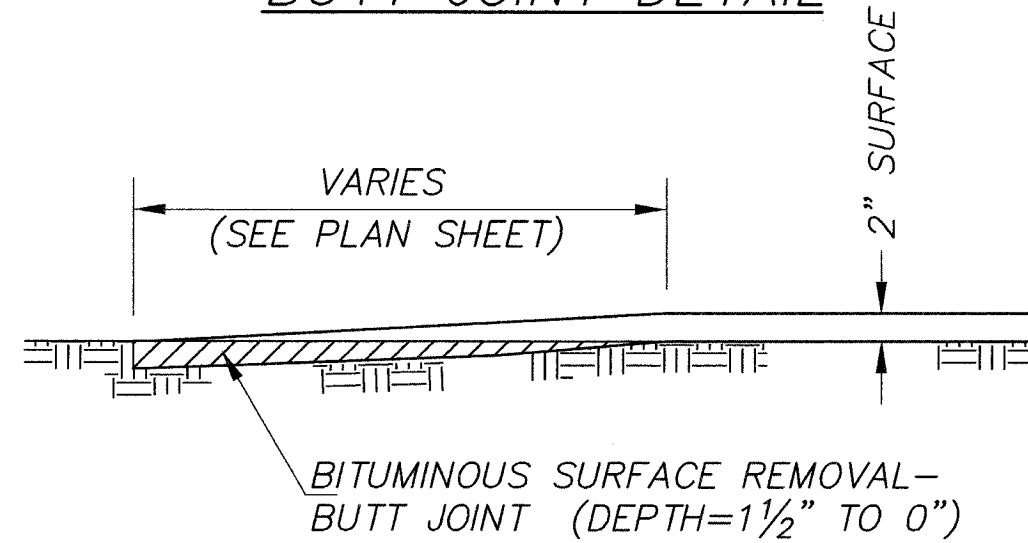
BITUMINOUS REMOVAL DETAIL

COUNTY	ROUTE	SECTION	TOTAL SHEETS	SHEET NO.
ADAMS	FAS 589	06-00195-00-RS	16	15
BRIDGE SURFACE REPLACEMENT (SN 001-3311)				
PROJECT NO. RS-589(103) 93418				



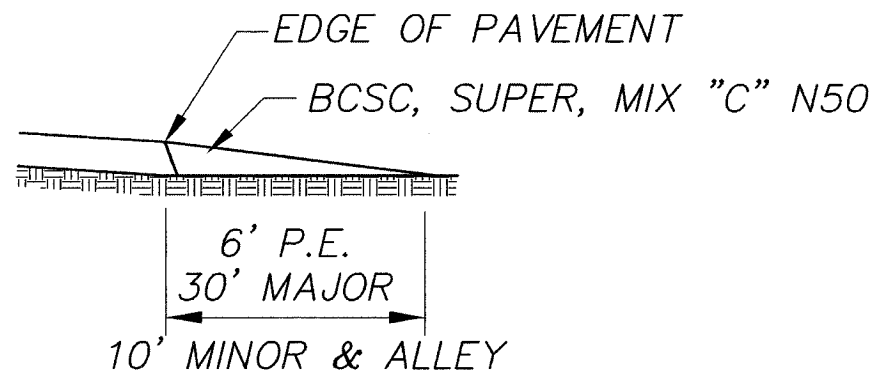
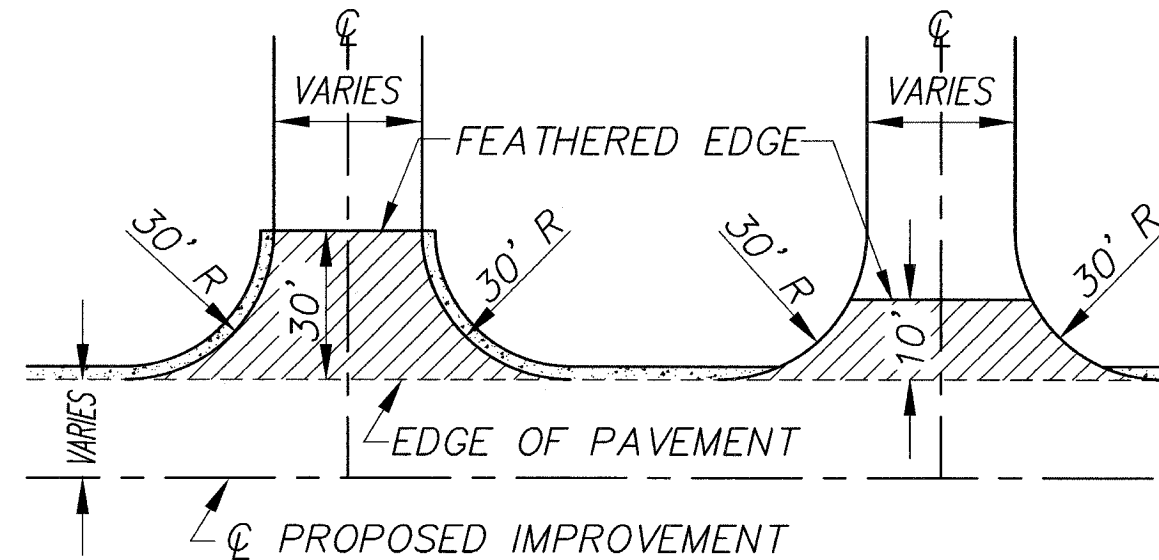
COUNTY	ROUTE	SECTION	TOTAL SHEETS	SHEET NO.
ADAMS	FAS 589	06-00195-00-RS	16	16
BUTT JOINT DETAIL				
SIDE ROAD & ENTRANCE DETAILS				
PROJECT NO. RS-589(103)				

BUTT JOINT DETAIL



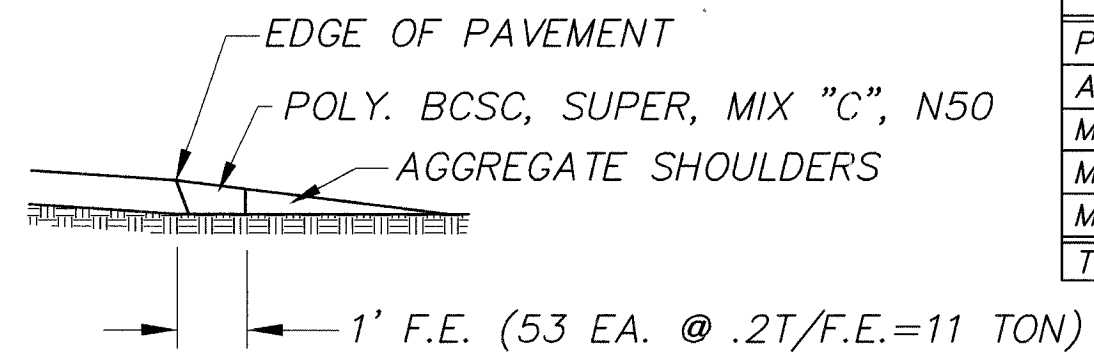
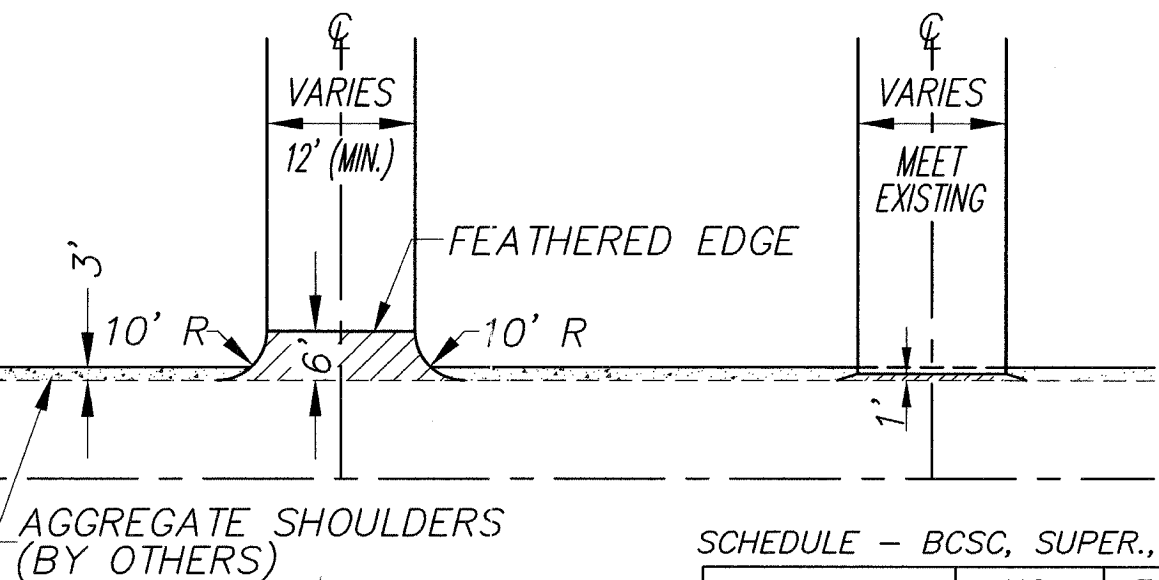
INTERSECTION DETAILS

MAJOR MINOR & ALLEY



ENTRANCE DETAILS

P.E. F.E.



SCHEDULE - BCSC, SUPER., MIX "C" N50

	NO.	TONS/	TONS
PE	36	2	72
ALLEY	3	9	27
MINOR ROAD	10	9	90
MAJOR ROAD	6	15	90
MAILBOXES	25	3	75
TOTAL			354