

3/3/2006
 c:\projects\94867\d05503
 REV: C

PROJECT ENGINEER : BILL STANLEY
 SQUAD LEADER : MYRA OLTMAN
 DESIGNER : MYRA OLTMAN
 TELEPHONE : 217/342-3951 EX 314

STATE OF ILLINOIS
 DEPARTMENT OF TRANSPORTATION

DIVISION OF HIGHWAYS
**PROPOSED
 HIGHWAY PLANS**
 FAP ROUTE 116 (IL 130)
 SECTION 121RS-3, 122RS-4

PROJECT NO: F-0116(047)
JASPER COUNTY
 C-97-070-03

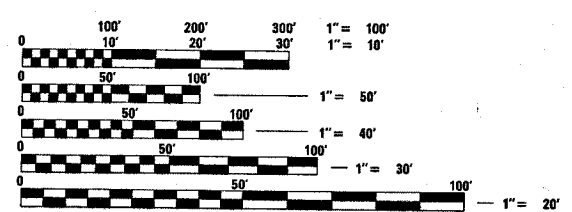
FAP ETC.	SECTION	COUNTY	TOTAL SHEETS	SHEET NO.
116	121RS-3 122RS-4	JASPER	31	1
FED. ROAD DIST. NO. 1		ILLINOIS	FED. AID PROJECT NO.	

INDEX OF SHEETS
 SEE SHEET 2 FOR INDEX OF SHEETS

STATION EQUATIONS
 STATION 50+35.90 BK = STATION 50+89.10 AH
 STATION 132+03.20 BK = STATION 132+08.40 AH
 STATION 135+61.10 BK = STATION 135+79.50 AH
 STATION 245+33.80 BK = STATION 245+33.60 AH
 STATION 293+63.80 BK = STATION 293+72.40 AH
 STATION 379+44.50 BK = STATION 379+57.80 AH

OMISSIONS
 STATION 99+79.77 TO STATION 101+03.23

2003 ADT = 4200

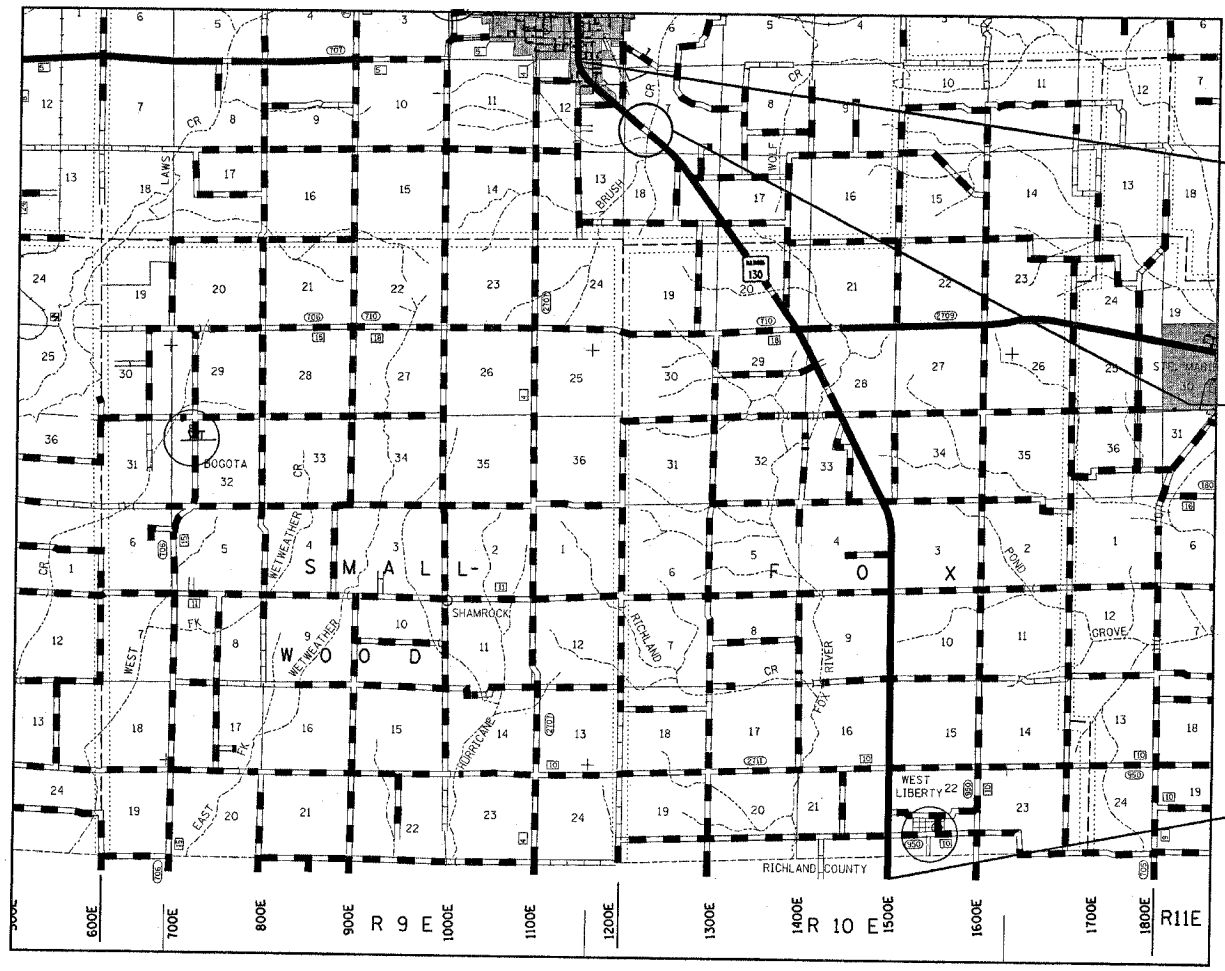


FULL SIZE PLANS HAVE BEEN PREPARED USING STANDARD
 ENGINEERING SCALES, REDUCED SIZED PLANS WILL NOT
 CONFORM TO STANDARD SCALES, IN MAKING MEASUREMENTS
 ON REDUCED PLANS, THE ABOVE SCALES MAY BE USED.

J.U.L.I.E.
 JOINT UTILITY LOCATION INFORMATION FOR EXCAVATION
 1-800-892-0123

CONTRACT NO. 94867

TOWNSHIP : WADE AND FOX



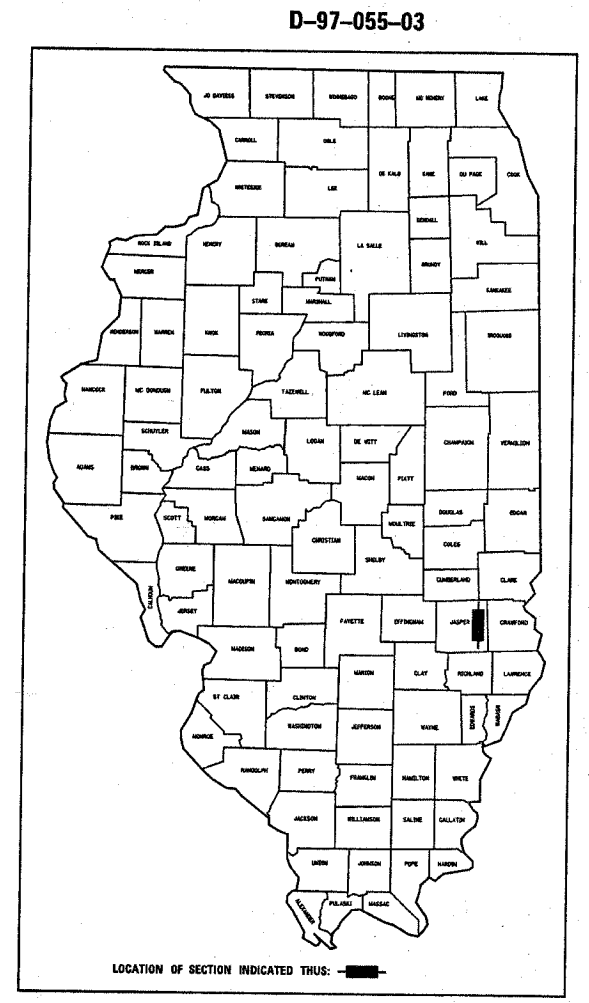
LOCATION MAP
 GROSS LENGTH = 54195.5 FEET = 10.26 MILES
 NET LENGTH = 54028.5 FEET = 10.23 MILES

PROJECT BEGINS
 STA. 40+00

BRIDGE OMISSION
 STR# 040-0018

PROJECT ENDS
 STA. 582+94

SEAL



STATE OF ILLINOIS
 DEPARTMENT OF TRANSPORTATION
 DIVISION OF HIGHWAYS

SUBMITTED March 7, 2006
Christ M. Reed
 DISTRICT ENGINEER

ENGINEER OF PROJECT DEVELOPMENT AND IMPLEMENTATION
May 12, 2006
Mike Stone
 ENGINEER OF DESIGN AND ENVIRONMENT

May 12, 2006
Milton R. Sees, P.E.
 DIRECTOR, DIVISION OF HIGHWAYS

PRINTED BY THE AUTHORITY OF
 THE STATE OF ILLINOIS