

district
3/3/2006
c:\projects\94867\d05503pe.dgn

PS 1

FAP RTE.	SECTION	COUNTY	TOTAL SHEETS	SHEET NO.
116	121RS-3 122RS-4	JASPER	31	13
FED. ROAD DIST. NO. 7		ILLINOIS	FED. AID PROJECT NO.	

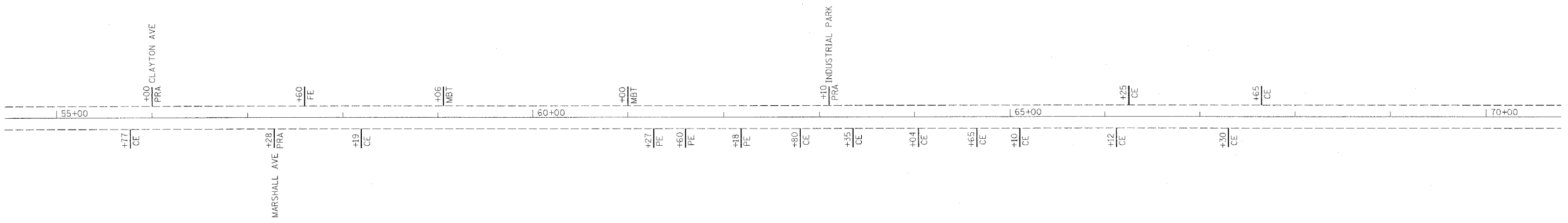
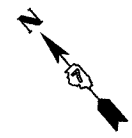
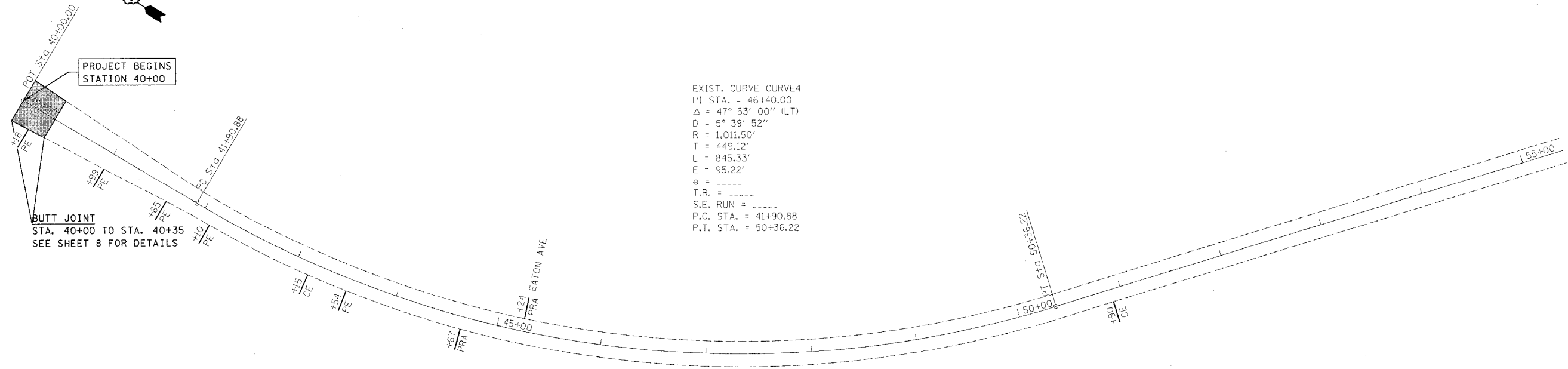
CONTRACT NO. 94867



PROJECT BEGINS
STATION 40+00

BUTT JOINT
STA. 40+00 TO STA. 40+35
SEE SHEET 8 FOR DETAILS

EXIST. CURVE CURVE4
PI STA. = 46+40.00
 $\Delta = 47^\circ 53' 00''$ (LT.)
D = $5^\circ 39' 52''$
R = 1,011.50'
T = 449.12'
L = 845.33'
E = 95.22'
e = -----
T.R. = -----
S.E. RUN = -----
P.C. STA. = 41+90.88
P.T. STA. = 50+36.22



REVISIONS	
NAME	DATE

ILLINOIS DEPARTMENT OF TRANSPORTATION

**STA. 40+00
TO
STA. 70+00**

SCALE: VERT.
HORIZ.
DATE

DRAWN BY
CHECKED BY