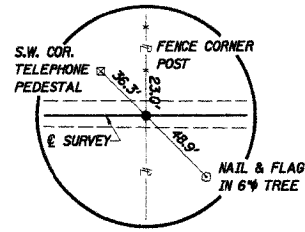


SE 1/4, SEC. 22. T. 3 N., R. 6 E., 3RD P.M.

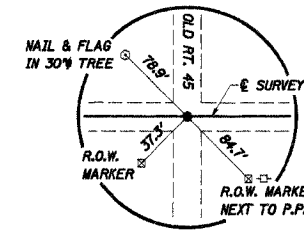
ROUTE	SECTION	COUNTY	TOTAL SHEETS	SHEET NO.
T.R. 331A	99-04127	CLAY	11	3
STA. 42+00 TO STA. 57+60.76		CONTRACT NO. 95454		
ROAD DISTRICT		ILLINOIS HARTER ROAD DISTRICT		



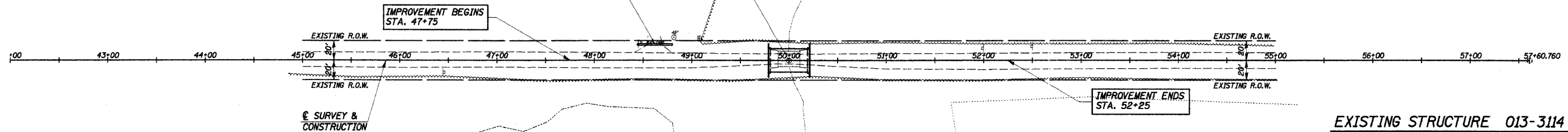
P.O.T. STA. 30+99.04
IRON PIN (FLUSH)

STA. 50+00 - SPECIAL BRIDGE DESIGN
PRECAST PRESTRESSED CONCRETE DECK
BEAM BRIDGE, SINGLE SPAN @ 41'-8"
24' ROADWAY, 0° SKEW
PROPOSED S.N. 013-3227

STA. 48+62 P.E. & M.B.T.
PIPE CULVERT, CLASS D
TYPE 1, 18", 36' LONG



P.O.T. STA. 57+60.76
NAIL (FLUSH)



CHANNEL EXCAVATION

THE CHANNEL SHALL BE EXCAVATED AS SHOWN WITHIN THE LIMITS OF THE PROPOSED STRUCTURE THEN TAPER TO THE EXISTING CHANNEL AT THE R.O.W. LINES. SUITABLE EXCAVATED MATERIAL TO BE USED IN THE EMBANKMENT AS DIRECTED BY THE ENGINEER.

CHANNEL EXCAVATION = 50 CU. YD.

ENTRANCES TO BE BUILT

LT. STA. 48+62, P.E. -2.8%, 16' ROADBED
QUANTITIES INCLUDED IN THOSE LISTED

PIPE'S TO BE REMOVED

LT. STA. 48+62, 24' CMP, 30' LONG
QUANTITIES INCLUDED IN "EARTH EXCAVATION".

EXISTING STRUCTURE 013-3114

SINGLE SPAN STRINGER MULTI-BEAM GIRDER BRIDGE WITH CLOSED CONC. ABUTMENTS AND WINGWALLS.
Bk.-to-Bk. = 23'
O.-to-O. = 16.1'
SKEW = 0°

REMOVAL OF EXISTING STRUCTURES = 1 EACH

NE 1/4, SEC. 27. T. 3 N., R. 6 E., 3RD P.M.

