

ROUTE NO.	SECTION	COUNTY	TOTAL SHEETS	SHEET NO.
T.R. 331A	99-04127-00-BR	CLAY	11	1
ROAD DIST.		ILLINOIS	HARTER	

CONTRACT NO. 95454

STATE OF ILLINOIS DEPARTMENT OF TRANSPORTATION DIVISION OF HIGHWAYS PLANS FOR PROPOSED BRIDGE REPLACEMENT AND REHABILITATION PROGRAM

**HARTER ROAD DISTRICT
SECTION 99-04127-00-BR
CLAY COUNTY
PROJECT NO. BROS-25(52)
T.R. 331A
C-97-051-05**

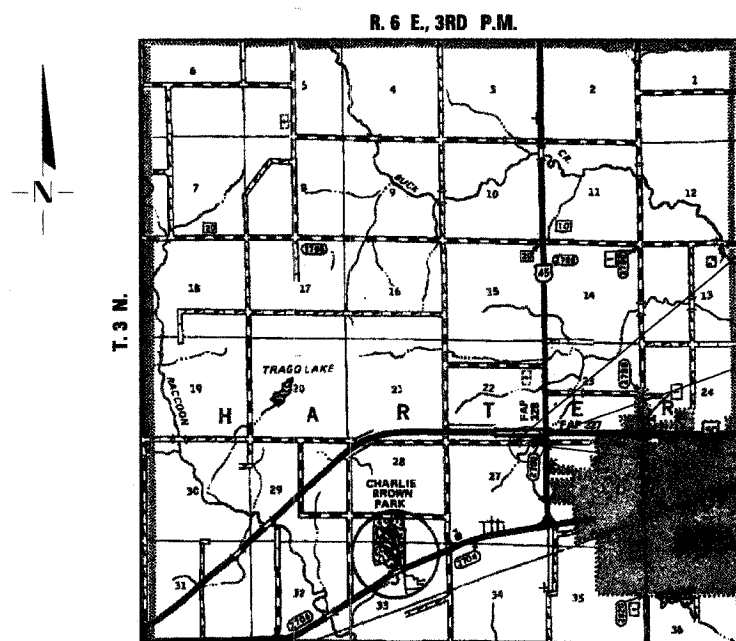
INDEX OF SHEETS	
SHEET NO.	TITLE
1.	COVER SHEET
2.	SUMMARY OF QUANTITIES, GENERAL NOTES & TYPICAL SECTIONS
3.	PLAN AND PROFILE SHEET
4.-7.	BRIDGE PLANS
8.-11.	STATION CROSS SECTIONS

STANDARDS:

280001-02	TEMPORARY EROSION CONTROL SYSTEMS
515001-02	NAME PLATE FOR BRIDGES
631026-02	TRAFFIC BARRIER TERMINAL, TYPE 5 & 5A
635006-02	REFLECTOR AND TERMINAL MARKER PLACEMENT
702001-06	TRAFFIC CONTROL DEVICES
BLR 21-6	TYPICAL APPLICATION OF TRAFFIC CONTROL DEVICES FOR CONSTRUCTION ON RURAL LOCAL HIGHWAYS
BLR 24-1	MAILBOX TURNOUT FOR LOCAL ROADS

SCALES

PLAN	0' 50' 100'
PROFILE HORIZ.	0' 50' 100'
PROFILE VERT.	0' 5' 10'
CROSS SECTIONS	0' 5' 10'



LOCATION PLAN

GROSS LENGTH OF SECTION = 450 FEET = 0.085 MILES
NET LENGTH OF SECTION = 450 FEET = 0.085 MILES



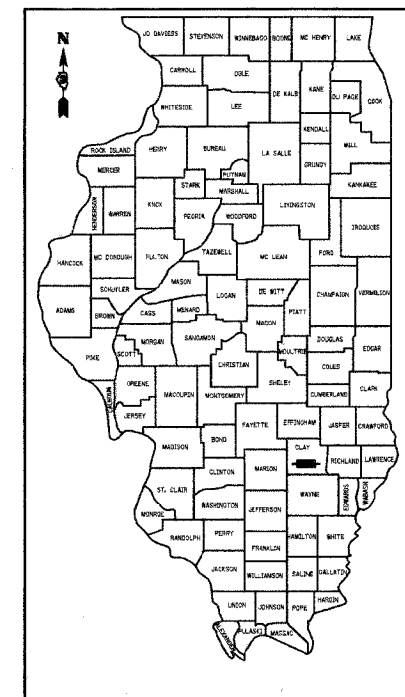
IMPROVEMENT BEGINS
STA. 47 + 75

STA. 50 + 00 - SPECIAL BRIDGE DESIGN
PRECAST PRESTRESSED CONCRETE DECK
BEAM BRIDGE, SINGLE SPAN @ 41'-8",
24'-0" ROADWAY, 0° SKEW
EXISTING S.N. 013-3114
PROPOSED S.N. 013-3227

IMPROVEMENT ENDS
STA. 52 + 25



Fred J. Stone Jr. (3.20.06)
ILLINOIS PROFESSIONAL NO. 26065
EXPIRES 11-30-07



LOCATION OF SECTION INDICATED THUS:

CLASSIFICATION: RURAL TWO-LANE LOCAL ROADS
DESIGN VOLUME: UNDER 250 ADT
CURRENT ADT: 110 (2005)
DESIGN SPEED: 30 MPH

PASSED	<u>3/23</u>	20 <u>06</u>
	<i>John Williams</i>	ROAD DISTRICT COMMISSIONER
APPROVED	<u>March 23</u>	20 <u>06</u>
	<i>J.T.D.</i>	COUNTY ENGINEER
PASSED	<u>4/19</u>	20 <u>06</u>
	<i>Maureen Elwell</i>	DISTRICT SEVEN ENGINEER OF LOCAL ROADS & STREETS
RELEASED FOR BID	<u>4/10</u>	20 <u>06</u>
BASED ON LIMITED	<i>Christa M. Reed</i>	DEPUTY DIRECTOR OF HIGHWAYS, REGION FOUR ENGINEER
REVIEW		
STATE OF ILLINOIS DEPARTMENT OF TRANSPORTATION		

TOLL FREE JOINT UTILITY LOCATING
INFORMATION FOR EXCAVATORS (J.U.L.I.E.)
TELEPHONE NUMBER 1-800-892-0123

4440 ASH GROVE
SPRINGFIELD, IL 62711
(217) 793-8600
oasinc@insightbb.com

OZYURT AND STONE, INC.
CONSULTING ENGINEERS

ROUTE NO.	SECTION	COUNTY	TOTAL SHEETS	SHEET NO.
T.R. 331A	99-04127-00-BR	CLAY	11	2
ROAD DIST.	ILLINOIS		HARTER	

CONTRACT NO. 95454

SUMMARY OF QUANTITIES

NUMBER	ITEM	UNIT	QUANTITY
20100500	TREE REMOVAL, ACRES	ACRE	0.02
20200100	EARTH EXCAVATION	CU YD	70
20300100	CHANNEL EXCAVATION	CU YD	50
20400800	FURNISHED EXCAVATION	CU YD	265
20700110	POROUS GRANULAR EMBANKMENT	TON	46
25001000	SEEDING, CLASS 2 (SPECIAL)	ACRE	0.2
28000250	TEMPORARY EROSION CONTROL SEEDING	POUND	25
28000300	TEMPORARY DITCH CHECKS	EACH	4
28000400	PERIMETER EROSION BARRIER	FOOT	800
28100807	STONE DUMPED RIPRAP, CLASS A4	TON	56
40200800	AGGREGATE SURFACE COURSE, TYPE B	TON	386
50100100	REMOVAL OF EXISTING STRUCTURES	EACH	1
50300225	CONCRETE STRUCTURES	CU YD	16.8
50400305	PRECAST PRESTRESSED CONCRETE DECK BEAMS (17" DEPTH)	SQ FT	1,000
50800105	REINFORCEMENT BARS	POUND	2,640
50900205	STEEL RAILING, TYPE S1	FOOT	85
51201600	FURNISHING STEEL PILES HP12X53	FOOT	96
51202700	DRIVING STEEL PILES	FOOT	96
51203600	TEST PILE STEEL HP12X53	EACH	2
51204315	CONCRETE ENCASMENT	CU YD	2.8
51500100	NAME PLATES	EACH	1
54200223	PIPE CULVERTS, CLASS D, TYPE 1 18"	FOOT	36
67100100	MOBILIZATION	L SUM	1
78201000	TERMINAL MARKER - DIRECT APPLIED	EACH	4

*SEE SPECIAL PROVISIONS

GENERAL NOTES

WHERE SECTION OR SUBSECTION MONUMENTS ARE ENCOUNTERED, THE ENGINEER SHALL BE NOTIFIED BEFORE SUCH MONUMENTS ARE REMOVED. THE CONTRACTOR SHALL PROTECT AND CAREFULLY PRESERVE ALL PROPERTY MARKS AND MONUMENTS UNTIL THE OWNER, AND AUTHORIZED SURVEYOR OR AGENT HAS WITNESSED OR OTHERWISE REFERENCED THEIR LOCATION.

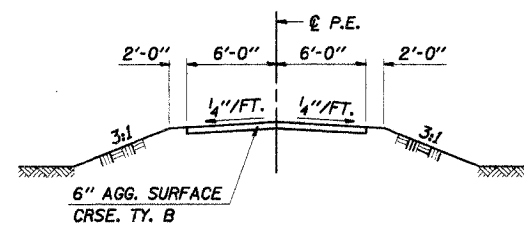
THE AREA TO BE SEEDDED SHALL CONSIST OF ALL DISTURBED EARTH SURFACES WITHIN THE RIGHT OF WAY, AS DIRECTED BY THE ENGINEER.

SEEDING, CLASS 2 (SPECIAL) = 0.2 ACRE

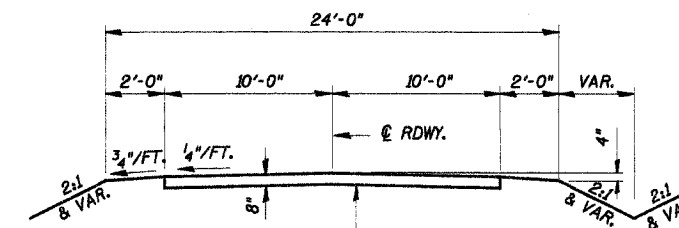
ALL TREES WITHIN THE LIMITS SHOWN BELOW AND THE ADJACENT SHOWN R.O.W. LINES WHICH INTERFERE WITH THE CONSTRUCTION SHALL BE REMOVED ONLY AS DIRECTED BY THE ENGINEER. SEE THE SPECIAL PROVISIONS.

18' LT. STA. 49+10 TO 18' LT. STA. 52+25 = 0.015 (USE 0.02) ACRE

TREE REMOVAL, ACRES = 0.02 ACRE



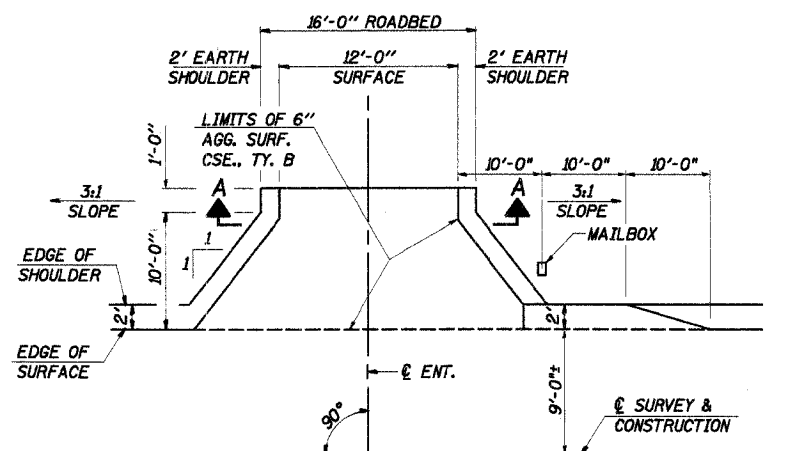
SECTION A-A



TYPICAL PROPOSED CROSS SECTION

STA. 49+50 TO STA. 50+50
ROAD CLASSIFICATION: LOCAL ROAD ADT < 250
CURRENT ADT 110

TRANSITION FROM EXISTING ROADWAY TO PROPOSED ROADWAY TO BE CONSTRUCTED FROM STA. 47+75 TO STA. 49+50 AND FROM STA. 50+50 TO STA. 52+25.

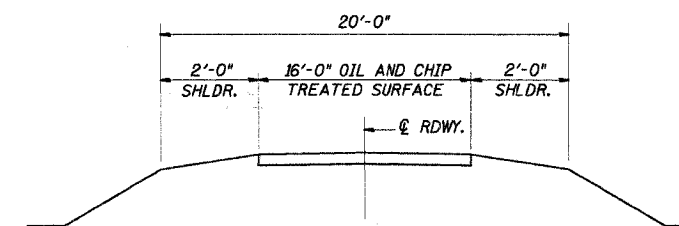


**PRIVATE ENTRANCE
W/ MAILBOX TURNOUT DETAIL**
LT. STA. 48+62

TEMPORARY EROSION CONTROL

THE FOLLOWING QUANTITIES ARE ESTIMATES ONLY. ACTUAL QUANTITIES AND LOCATIONS FOR EROSION CONTROL WILL BE DETERMINED BY THE ENGINEER IN THE FIELD AND THERE WILL BE NO ADJUSTMENT IN ANY PRICE DUE TO A CHANGE IN PLAN QUANTITY.

- PERIMETER EROSION BARRIER = 800 FOOT
- TEMPORARY EROSION CONTROL SEEDING = 25 POUND
- TEMPORARY DITCH CHECKS = 4 EACH



EXISTING TYPICAL CROSS SECTION

**SUMMARY OF QUANTITIES, GENERAL NOTES
AND TYPICAL CROSS SECTION**
SECTION 99-04127-00-BR
HARTER ROAD DISTRICT
CLAY COUNTY
STA. 50+00

4440 ASH GROVE
SPRINGFIELD, IL 62711
(217) 793-8600
oasinc@insightbb.com

OZYURT AND STONE, INC.
CONSULTING ENGINEERS

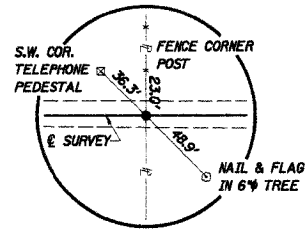
DRAWN: S.A.P.
DATE: 08/29/05

CHECKED: S.F.M.
DATE: 09/07/05

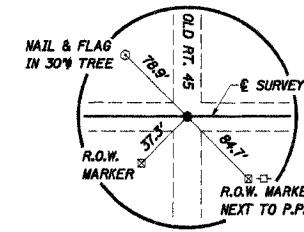
JOB NO.: 0502
FILE: 0502SUMTYP.DGN
DATE: 03/20/06

SE 1/4, SEC. 22. T. 3 N., R. 6 E., 3RD P.M.

ROUTE	SECTION	COUNTY	TOTAL SHEETS	SHEET NO.
T.R. 331A	99-04127	CLAY	11	3
STA. 42+00 TO STA. 57+60.76		ILLINOIS HARTER ROAD DISTRICT		
CONTRACT NO. 95454				



P.O.T. STA. 30+99.04
IRON PIN (FLUSH)



P.O.T. STA. 57+60.76
NAIL (FLUSH)

STA. 50+00 - SPECIAL BRIDGE DESIGN
PRECAST PRESTRESSED CONCRETE DECK
BEAM BRIDGE, SINGLE SPAN @ 41'-8"
24' ROADWAY, 0° SKEW
PROPOSED S.N. 013-3227

STA. 48+62 P.E. & M.B.T.
PIPE CULVERT, CLASS D
TYPE 1, 18", 36' LONG

IMPROVEMENT BEGINS
STA. 47+75

IMPROVEMENT ENDS
STA. 52+25

EXISTING STRUCTURE 013-3114

SINGLE SPAN STRINGER MULTI-BEAM GIRDER BRIDGE
WITH CLOSED CONC. ABUTMENTS AND WINGWALLS.
Bk.-to-Bk. = 23'
O.-to-O. = 16.1'
SKEW = 0°

REMOVAL OF EXISTING STRUCTURES = 1 EACH

CHANNEL EXCAVATION

THE CHANNEL SHALL BE EXCAVATED AS SHOWN WITHIN THE
LIMITS OF THE PROPOSED STRUCTURE THEN TAPER TO THE
EXISTING CHANNEL AT THE R.O.W. LINES. SUITABLE
EXCAVATED MATERIAL TO BE USED IN THE EMBANKMENT AS
DIRECTED BY THE ENGINEER.

CHANNEL EXCAVATION = 50 CU. YD.

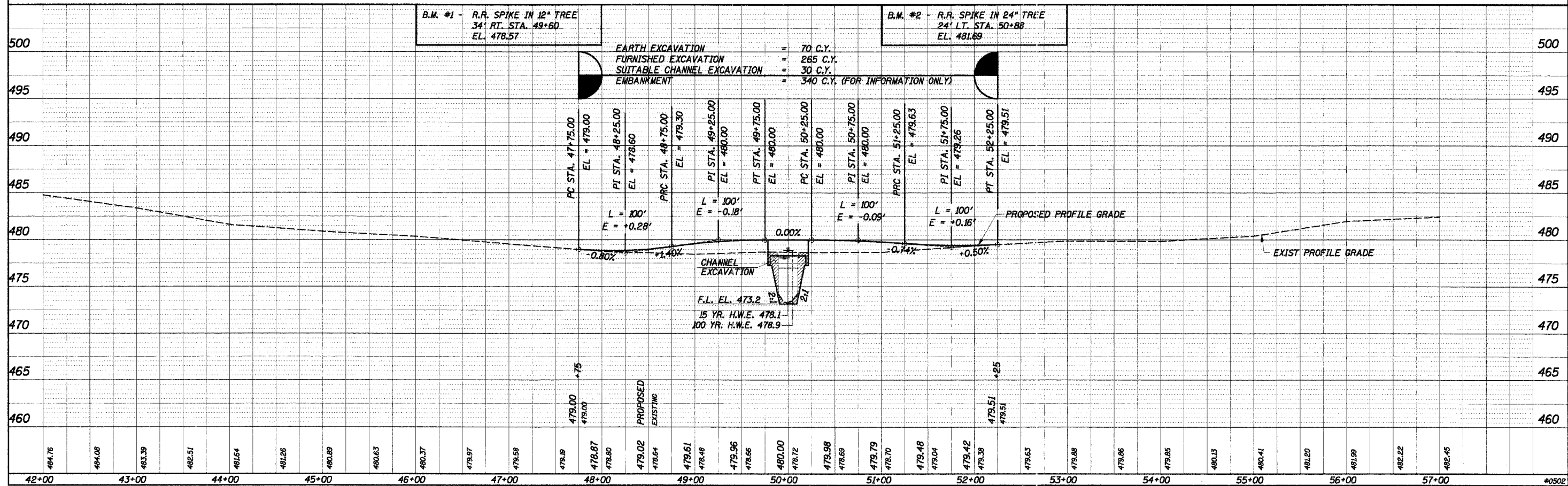
ENTRANCES TO BE BUILT

LT. STA. 48+62, P.E. -2.8%, 16' ROADBED
QUANTITIES INCLUDED IN THOSE LISTED

PIPE'S TO BE REMOVED

LT. STA. 48+62, 24' CMP, 30' LONG
QUANTITIES INCLUDED IN "EARTH EXCAVATION".

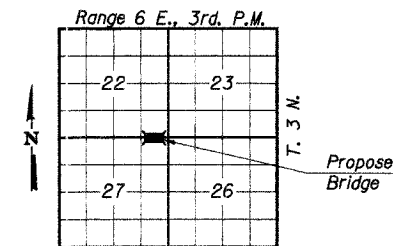
NE 1/4, SEC. 27. T. 3 N., R. 6 E., 3RD P.M.



DATE	BY	CHKD.
JUNE 7, 2004		
PLANNING	DESIGNED	REVISED
PLAN & PROFILE		

ROUTE NO.	SECTION	COUNTY	TOTAL SHEETS	SHEET NO.
T.R. 331A	99-04127-00-BR	CLAY	11	4
ROAD DIST.	ILLINOIS	HARTER		

CONTRACT NO. 95454



LOCATION PLAN

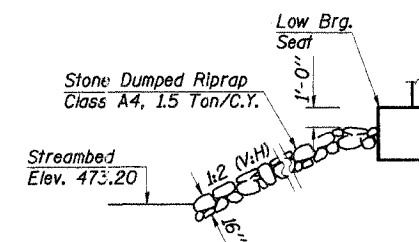
GENERAL NOTES

Reinforcement bars shall conform to the requirements of AASHTO M-31 or M-322, Grade 60.

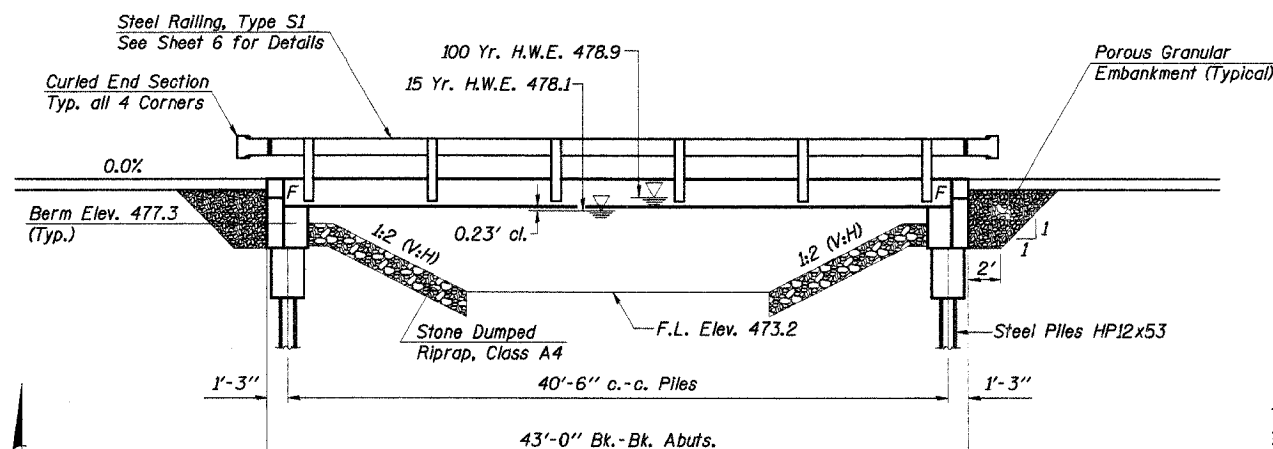
The Contractor shall drive one steel test pile in a permanent location at each abutment as directed by the Engineer, before ordering the remainder of piles.

Layout of slope protection system may be varied in the field to suit ground conditions as directed by the Engineer.

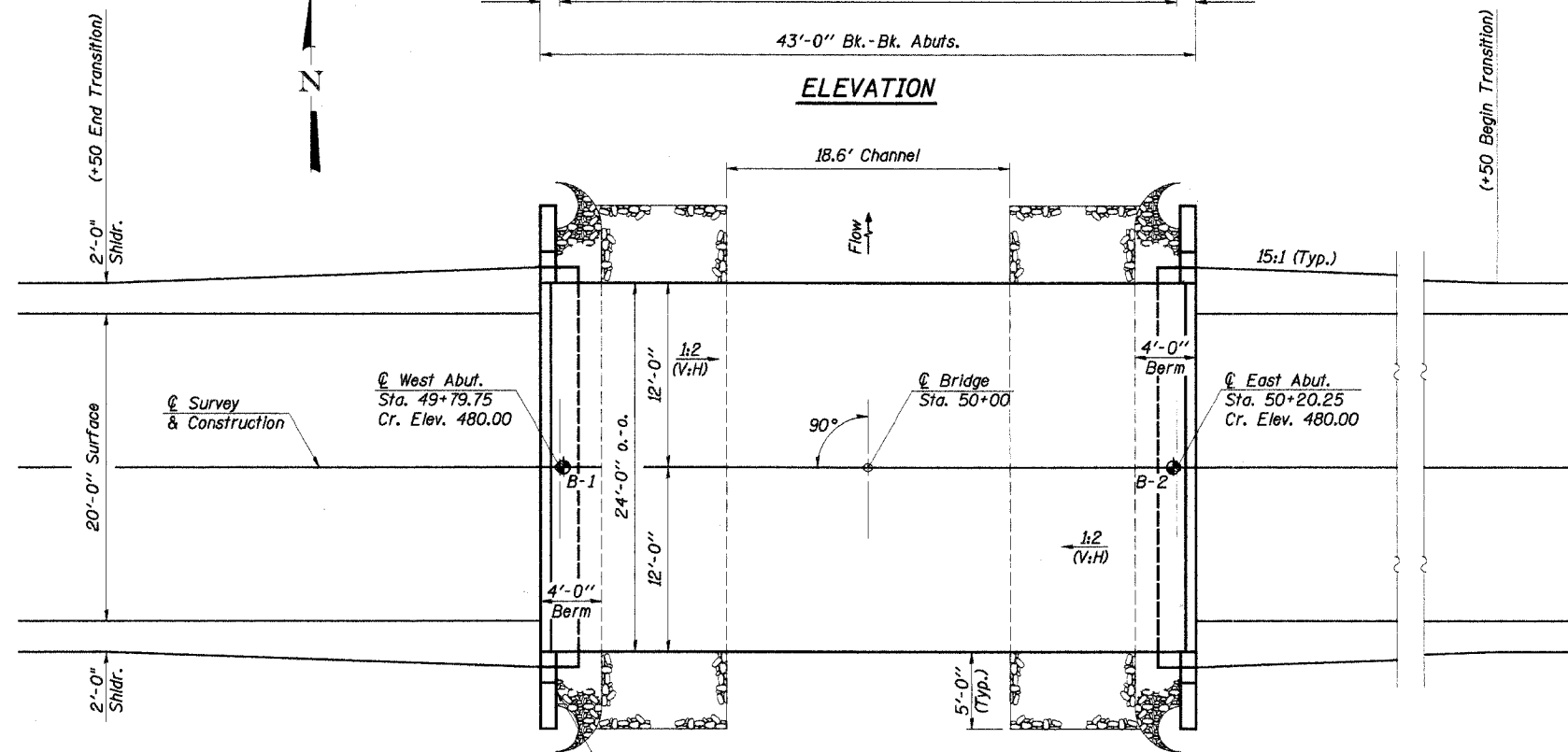
See Proposal for Boring Data.



STONE RIPRAP DETAIL



ELEVATION



PLAN

DESIGN STRESSES

$f_c = 5,000$ p.s.i. (Prestressed Beams)
 $f_{ci} = 4,000$ p.s.i. (Prestressed Beams)
 $f_c = 1,400$ p.s.i. (Concrete)
 $f_s = 270,000$ p.s.i. (Prestressed Strands)
 $f_{si} = 201,960$ p.s.i. (Prestressed Strands)
 $f_s = 24,000$ p.s.i. (Reinf. Bars -- Field Units)
 $f_y = 60,000$ p.s.i. (Reinf. Bars -- Field Units)
 $n = 9$ (Concrete)
 LOADING HS20-44
 Design Specifications: 2002 AASHTO
 25#/Sq. Ft. Included in dead load for future wearing surface.

WATERWAY INFORMATION

Drainage Area 120 Sq. Mi.
 Existing Opening (15 Yr.) 71 Sq. Ft.
 Required Opening (15 Yr.) 142 Sq. Ft.
 Proposed Opening (15 Yr.) 142 Sq. Ft.
 Design Discharge (15 Yr.) 475 C.F.S.
 Created Head (15 Yr.) 0.2 Ft.
 100 Year Discharge 773 C.F.S.
 100 Yr. Created Head 0.5 Ft.

DESIGNED	F.J.S.
CHECKED	S.F.M.
DRAWN	S.A.P.
CHECKED	S.F.M.

ELM CREEK
 BUILT 200_ BY
 CLAY COUNTY
 SEC. 99-04127-00-BR
 F.A. PROJ. BROS-25(43)
 STR. NO. 013-3227
 LOADING HS20

LETTERING FOR NAME PLATE

See Std. 515001

TOTAL BILL OF MATERIAL

ITEM	UNIT	SUPER	SUB	TOTAL
Precast Prestressed Concrete Deck Beams (17" Depth)	Sq. Ft.	1,000		1,000
Concrete Structures	Cu. Yd.		16.8	16.8
Reinforcement Bars	Pound		2,640	2,640
Steel Railing, Type S1	Foot	85		85
Name Plates	Each		1	1
Steel Piles HP12x53	Foot		96	96
Test Pile Steel HP12x53	Each		2	2
Stone Dumped Riprap, Class A4	Ton		56	56
Concrete Encasement	Cu. Yd.		2.8	2.8
Porous Granular Embankment	Ton		46	46

GENERAL PLAN & ELEVATION

SECTION 99-04127-00-BR
 HARTER ROAD DISTRICT
 CLAY COUNTY
 STATION 50+00



"I certify that to the best of my knowledge, information and belief, this bridge design is structurally adequate for the design loading shown on the plans. The design is an economical one for the style of structure and complies with requirements of the current 'AASHTO Standard Specifications for Highway Bridges'."

Fred J. Stone, Jr. (9-21-06)
 ILLINOIS STRUCTURAL NO. 2934 (Expires 11/30/06)

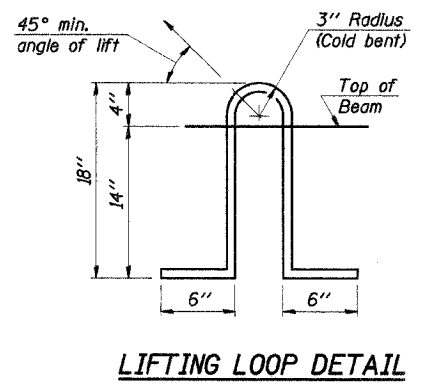
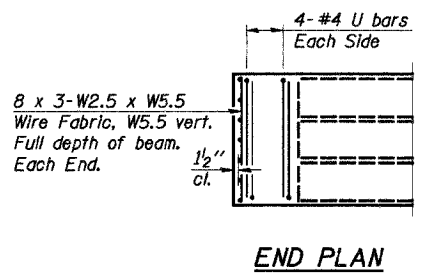
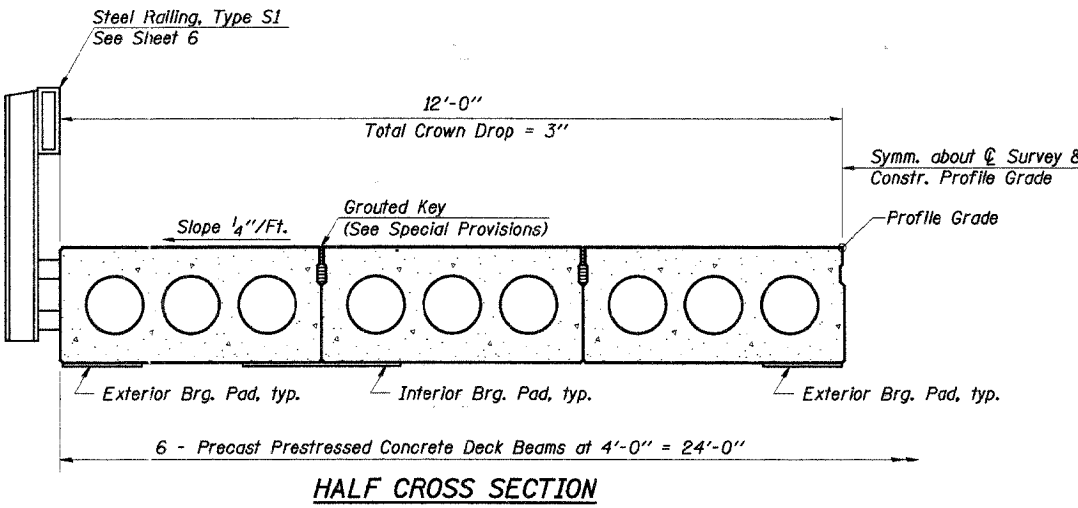
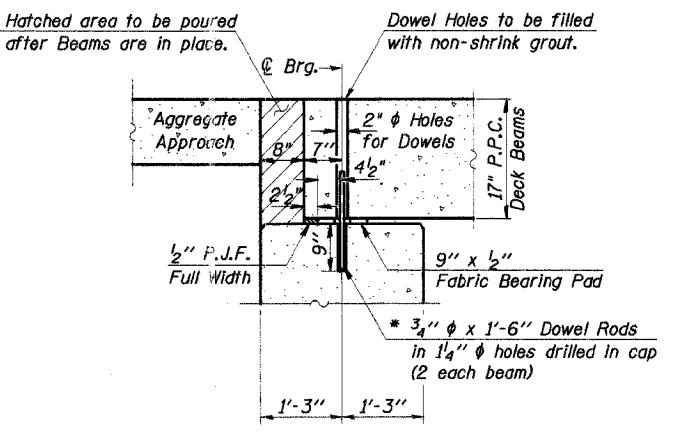
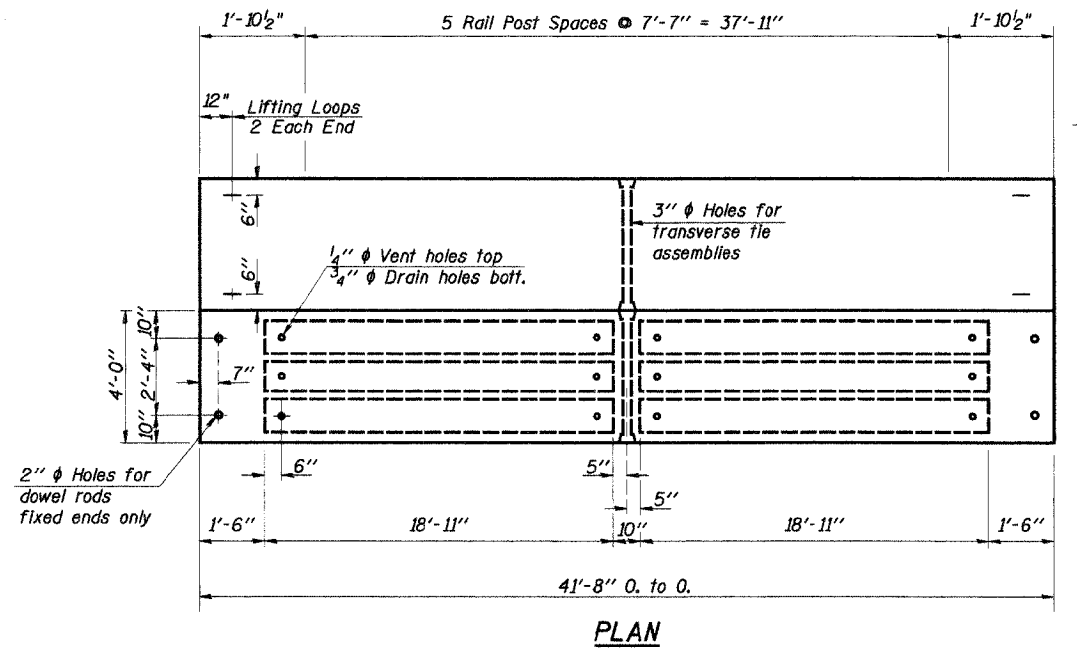
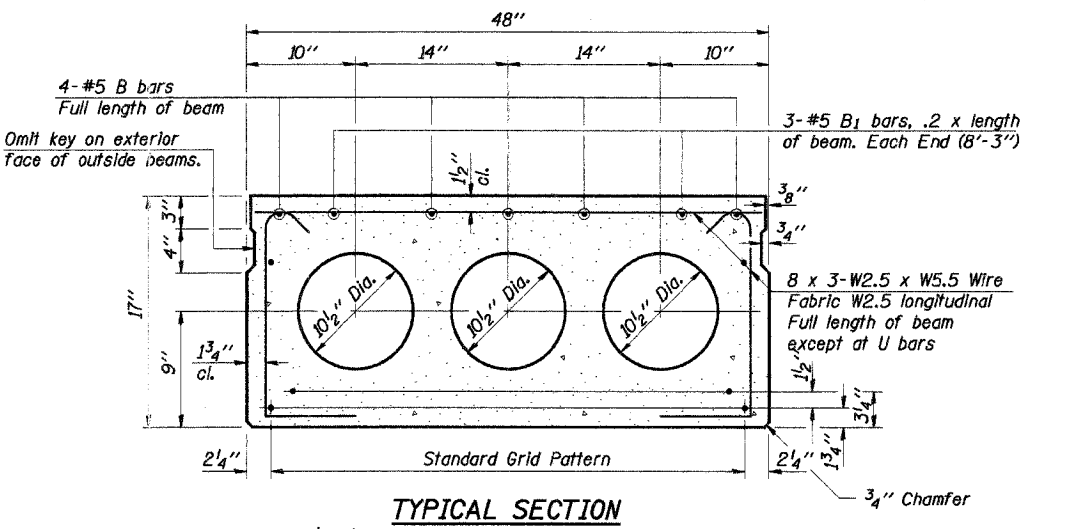
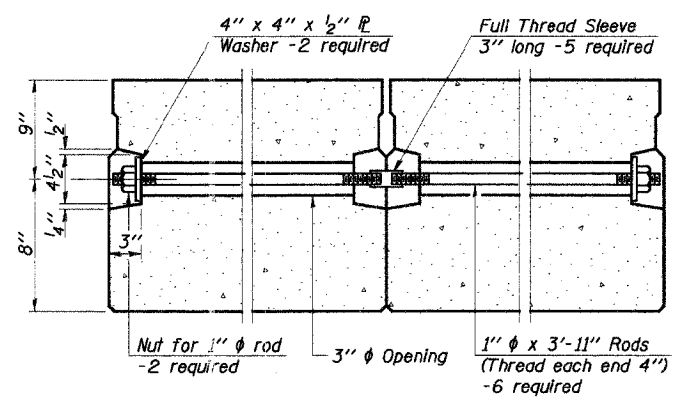
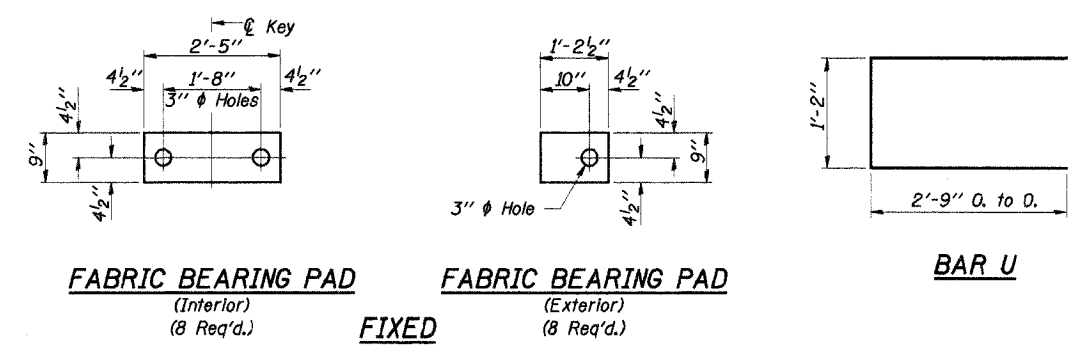
4440 ASH GROVE
 SPRINGFIELD, IL 62711
 (217) 793-8600
 oasino@ineightbb.com

OZYURT AND STONE, INC.
 CONSULTING ENGINEERS

JOB No.: 0502
 FILE: 0502GPE.DGN
 DATE: 03/20/06

ROUTE NO.	SECTION	COUNTY	TOTAL SHEETS	SHEET NO.
T.R. 331A	99-04127-00-BR	CLAY	11	5
ROAD DIST.	ILLINOIS	HARTER		

CONTRACT NO. 95454



* Dowel Rods to be grouted after beams are in place and allowed to cure (Min. 24 hrs.) prior to grouting the shear keys.

NOTES

Prestressing steel shall be uncoated high strength, low relaxation 7-wire strand, Grade 270. The nominal diameter shall be 1/2" and the nominal cross-sectional area shall be 0.153 sq. in. Lifting loops shall be 2-1/2" ϕ 270 ksi strands, as shown.

The 1" ϕ rods in the transverse tie assembly shall be tightened to a snug fit and the threads set. Pockets that receive transverse tie bar on outside shall be filled with grout after transverse tie assembly is in place.

Non prestressing steel shall conform to AASHTO M-31 or M-322, Grade 60.

The bearing seat surfaces shall be adjusted by shimming to assure firm and even bearing. Two 1/8" fabric adjusting shims of the dimensions of the Exterior Bearing Pad shall be provided for each bearing. (32 Req'd.)

Keyway surfaces shall be cleaned to remove form oil or other bond breaking material prior to shipment of the beams. Cleaning shall be done by sandblasting the keyway areas between top of the beam and the bottom edge of the key.

Required Release Strength, f'ci, shall be 4,000 p.s.i.

See Special Provisions for review and distribution of shop drawings.

Rail post anchor devices shall be cast into outside beam as elsewhere specified.

BILL OF MATERIAL

Item	Unit	Quantity
Precast Prestressed Concrete Deck Beams (17" Depth)	Sq. Ft.	1,000

Estimated Total Weight (One Beam) = 26,000 Pounds

DESIGNED	F.J.S.
CHECKED	S.F.M.
DRAWN	S.A.P.
CHECKED	S.F.M.

PD-4-S 9-1-03

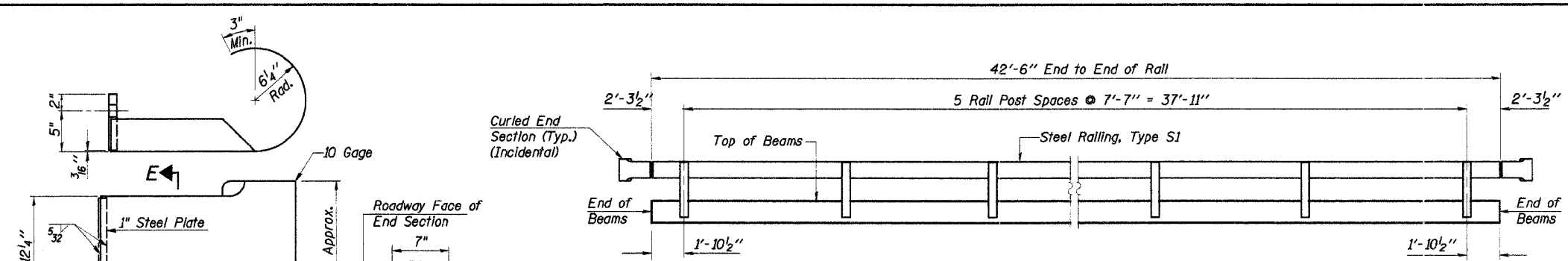
SUPERSTRUCTURE
SECTION 99-04127-00-BR
HARTER ROAD DISTRICT
CLAY COUNTY
STATION 50+00

4440 ASH GROVE
SPRINGFIELD, IL 62711
(217) 793-8600
oasinc@insightbb.com

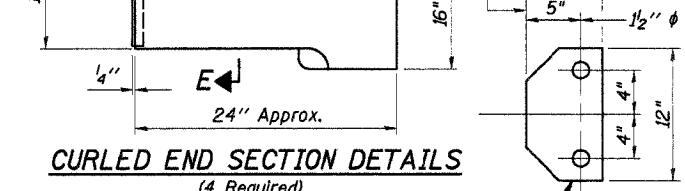
OZYURT AND STONE, INC.
CONSULTING ENGINEERS

JOB NO.: 0502
FILE: 0502SUPER.DGN
DATE: 03/20/06

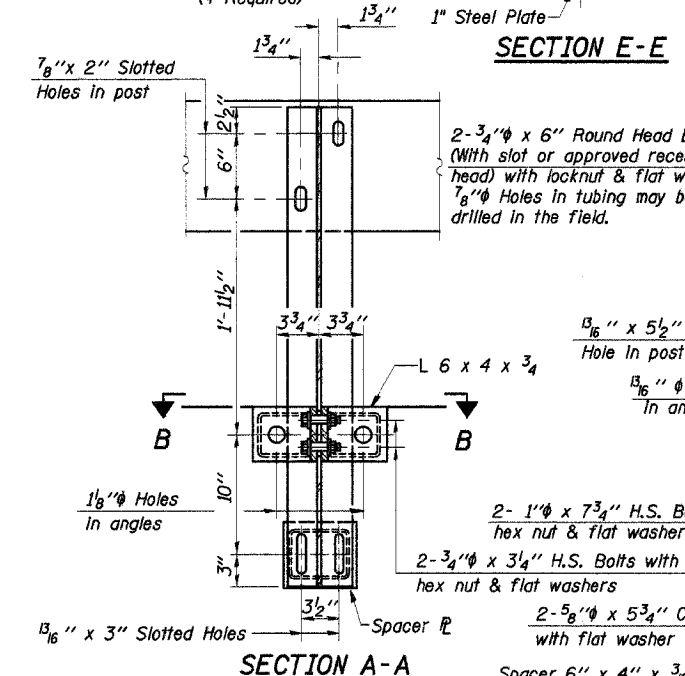
ROUTE NO.	SECTION	COUNTY	TOTAL SHEETS	SHEET NO.
T.R. 33JA	99-04127-00-BR	CLAY	11	6
ROAD DIST.	ILLINOIS	HARTER		
CONTRACT NO. 95454				



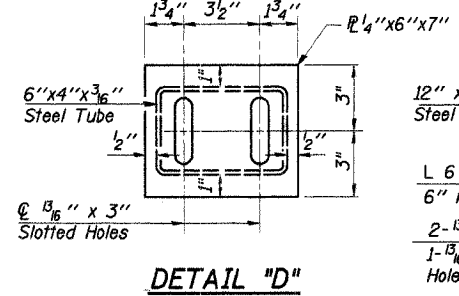
ELEVATION



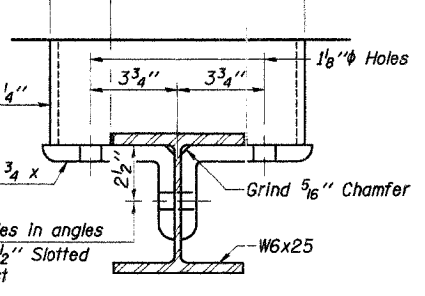
CURLLED END SECTION DETAILS
(4 Required)



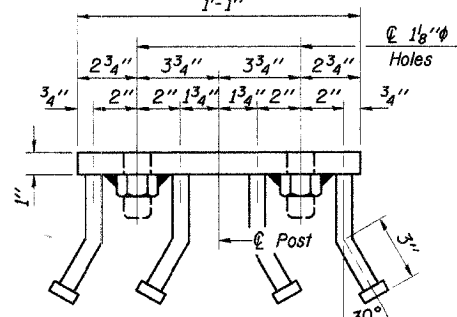
SECTION E-E



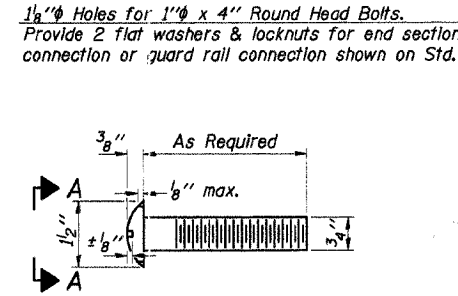
DETAIL "D"



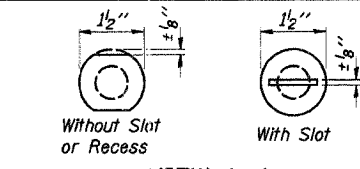
SECTION B-B



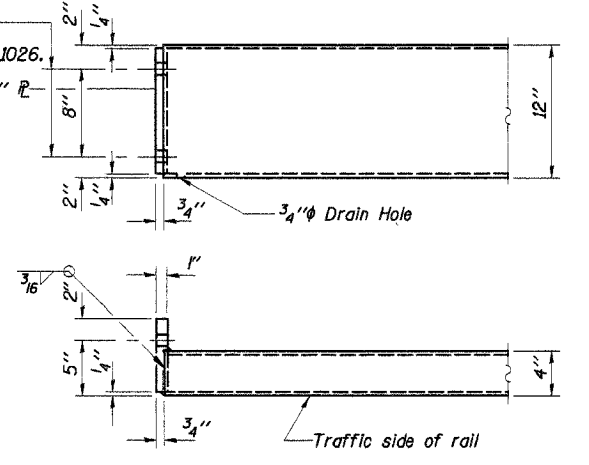
VIEW C-C



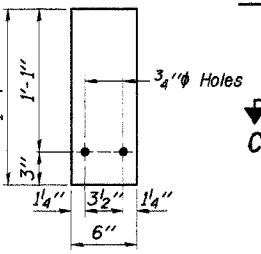
DETAIL OF 3/4" ROUND HEAD BOLT



VIEW A-A

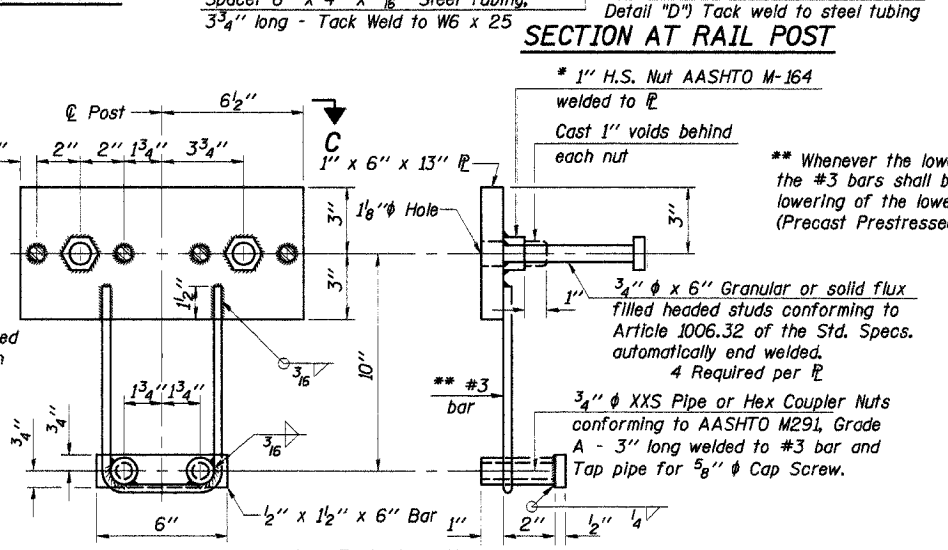


END OF RAIL DETAILS



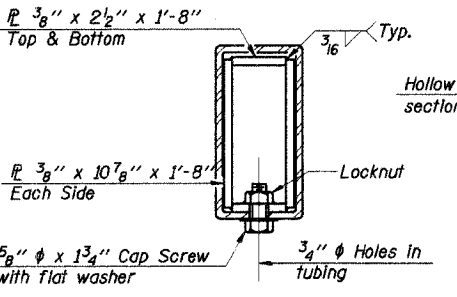
1/4" SHIM PLATE

Note: For multi-span bridges, sufficient 1/4" x 6" x 1/4" galvanized steel shims shall be provided to align rail between adjacent spans. Cost incidental to Steel Railing.

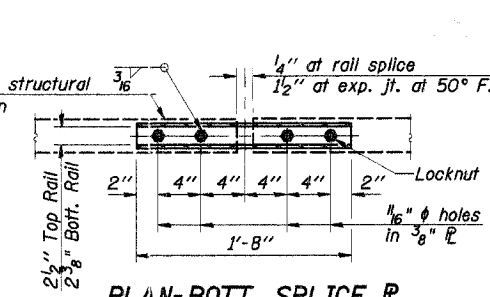


SECTION AT RAIL POST

** Whenever the lower insert assemblies interfere with strand locations, the #3 bars shall be cut and adjusted in order to allow raising or lowering of the lower inserts. Maximum adjustment not to exceed 1/2". (Precast Prestressed Concrete Deck Beam Bridges Only)



SECTIONS AT RAIL SPLICE



PLAN-BOTT. SPLICE TYPICAL

DESIGNED	F.J.S.
CHECKED	S.F.M.
DRAWN	S.A.P.
CHECKED	S.F.M.

ANCHOR DEVICE

* Threaded areas shall be plugged or blocked off during casting of beam.

NOTES

Hollow structural steel tubing shall conform to the requirements of ASTM designation A-500 Grade B Structural Steel Tubing and shall meet the longitudinal CVN requirements of 15 Ft.-Lbs. at 0°F.

All other steel shapes and plates shall conform to the requirements of AASHTO M-270, Grade 36 except posts and angles shall conform to AASHTO M-270, Grade 50.

Bolts, cap screws, and nuts shall conform to the requirement of ASTM designation A-307 except for high strength bolts, nuts and washers noted which shall conform to AASHTO M-164.

All bolts, nuts, cap screws, washers and lock washers shall be galvanized in accordance with AASHTO M-232.

All posts, railing, rail splices, anchor devices, angles and spacers shall be galvanized after shop fabrication in accordance with AASHTO M-111 and ASTM A-385. Galvanized rail shall not be painted.

Railing shall be in accordance with Section 509 of the Standard Specifications, except as noted, and will be paid for at the contract unit price per foot for STEEL RAILING, TYPE S1.

All field drilled holes shall be coated with an approved zinc rich paint before erection.

The lower plate of the post spacer in contact with concrete shall receive two coats of asphalt paint conforming to Section 1060.07 Type II or place 1/2" fabric bearing pad between the post spacer and concrete.

The 3/4" high strength bolts used to connect the 6 x 4 x 3/4 angles to the post shall be tightened in accordance with Article 505.04(f)(2) of the Standard Specifications. The 1" high strength bolts connecting the angles to the concrete shall be tightened to a snug fit and given an additional 1/2 turn. The 5/8" cap screws in bottom of posts shall be tightened to a snug fit only.

BILL OF MATERIAL

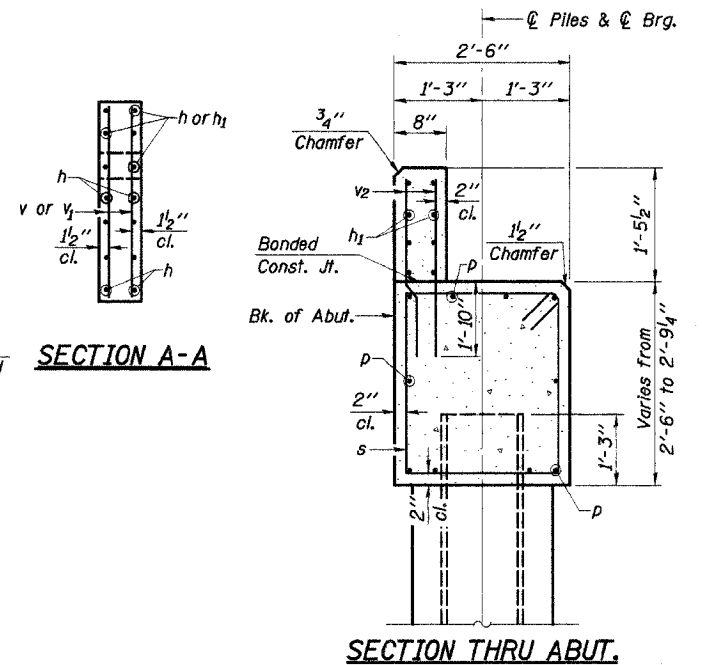
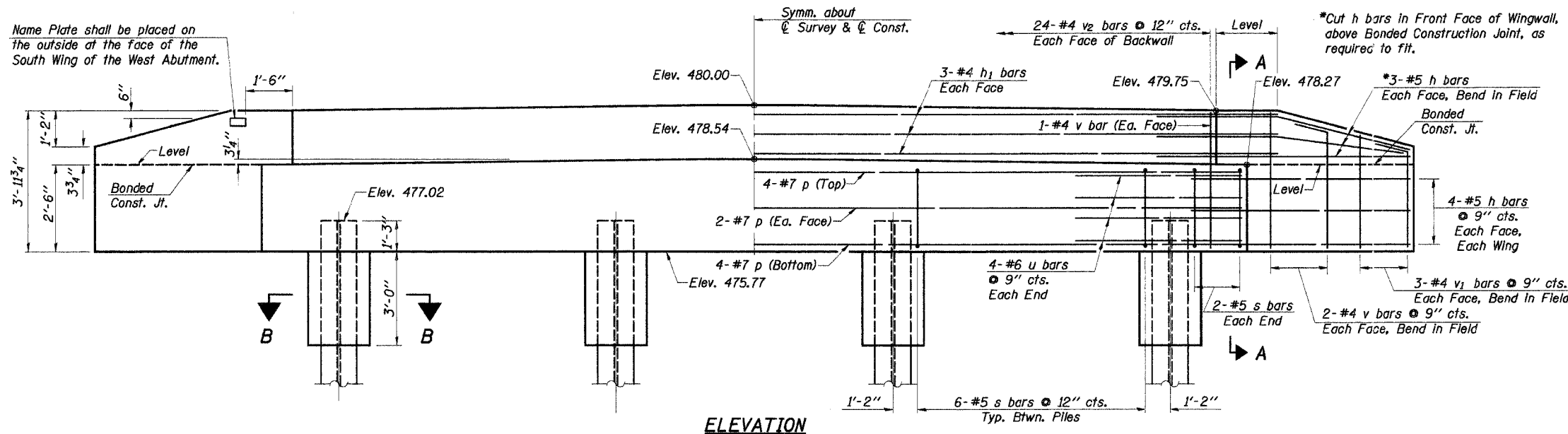
Item	Unit	Quantity
Steel Railing, Type S1	Foot	85

STEEL RAILING, TYPE S1

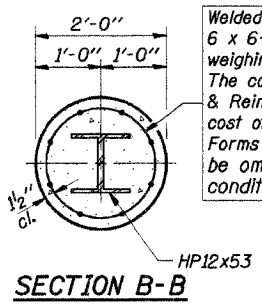
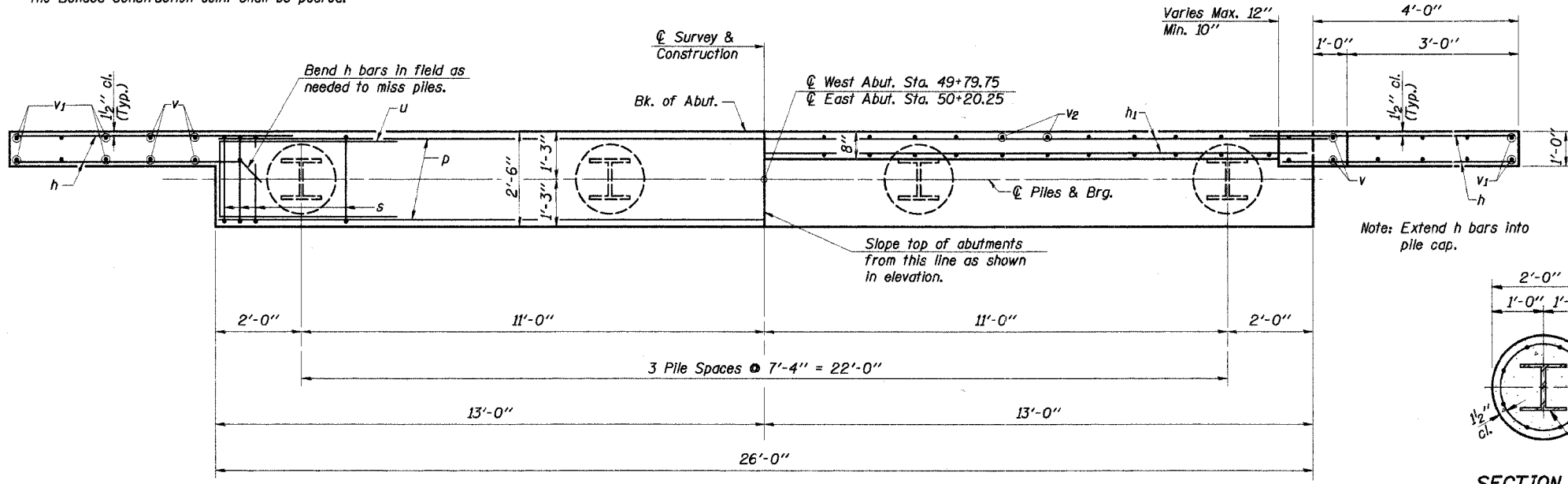
SECTION 99-04127-00-BR
HARTER ROAD DISTRICT
CLAY COUNTY
STATION 50+00

4440 ASH GROVE SPRINGFIELD, IL 62711 (217) 793-8600 oasinc@insightbb.com	OZYURT AND STONE, INC. CONSULTING ENGINEERS	JOB NO.: 0502 FILE: 0502RAIL.DGN DATE: 03/20/06
---	---	---

ROUTE NO.	SECTION	COUNTY	TOTAL SHEETS	SHEET NO.
T.R. 33JA	99-04127-00-BR	CLAY	11	7
ROAD DIST.	ILLINOIS		HARTER	
CONTRACT NO. 95454				



Note: After beams are in place and dowel rods grouted, the backwall and the portions of the wingwalls above the Bonded Construction Joint shall be poured.



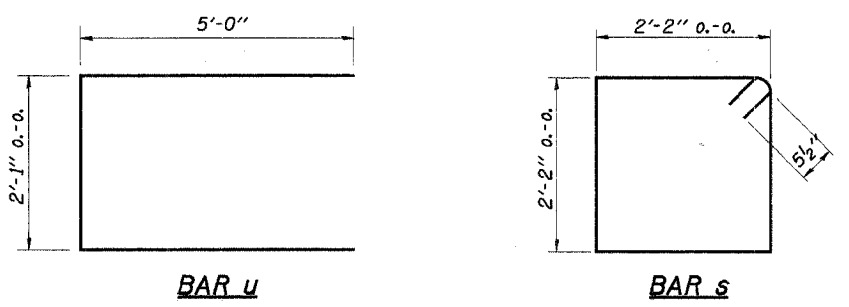
**2 ABUTMENTS
BILL OF MATERIAL**

Bar	No.	Size	Length	Shape
h	56	#5	5'-6"	—
h1	12	#4	27'-6"	—
p	20	#7	25'-8"	—
s	44	#5	9'-7"	□
u	16	#6	12'-1"	—
v	24	#4	3'-8"	—
v1	24	#4	3'-0"	—
v2	96	#4	3'-2"	—
Concrete Structures	Cu. Yd.	16.8		
Reinforcement Bars	Pound	2,640		
Name Plates	Each	1		
Test Pile Steel	Each	2		
Steel Piles HP12x53	Foot	96		
Concrete Encasement	Cu. Yd.	2.8		

PILE DATA

Type.....Steel Piles HP12x53
 No. Req'd. (2 Abutments).....*8
 Capacity.....48 Tons/Pile
 Est. Length.....18 Feet/Pile W. Abut.
 14 Feet/Pile E. Abut.

*Includes 1 Test Pile to be driven in a permanent location at Each Abutment.



DESIGNED	F.J.S.
CHECKED	S.F.M.
DRAWN	S.A.P.
CHECKED	S.F.M.

ABUTMENTS

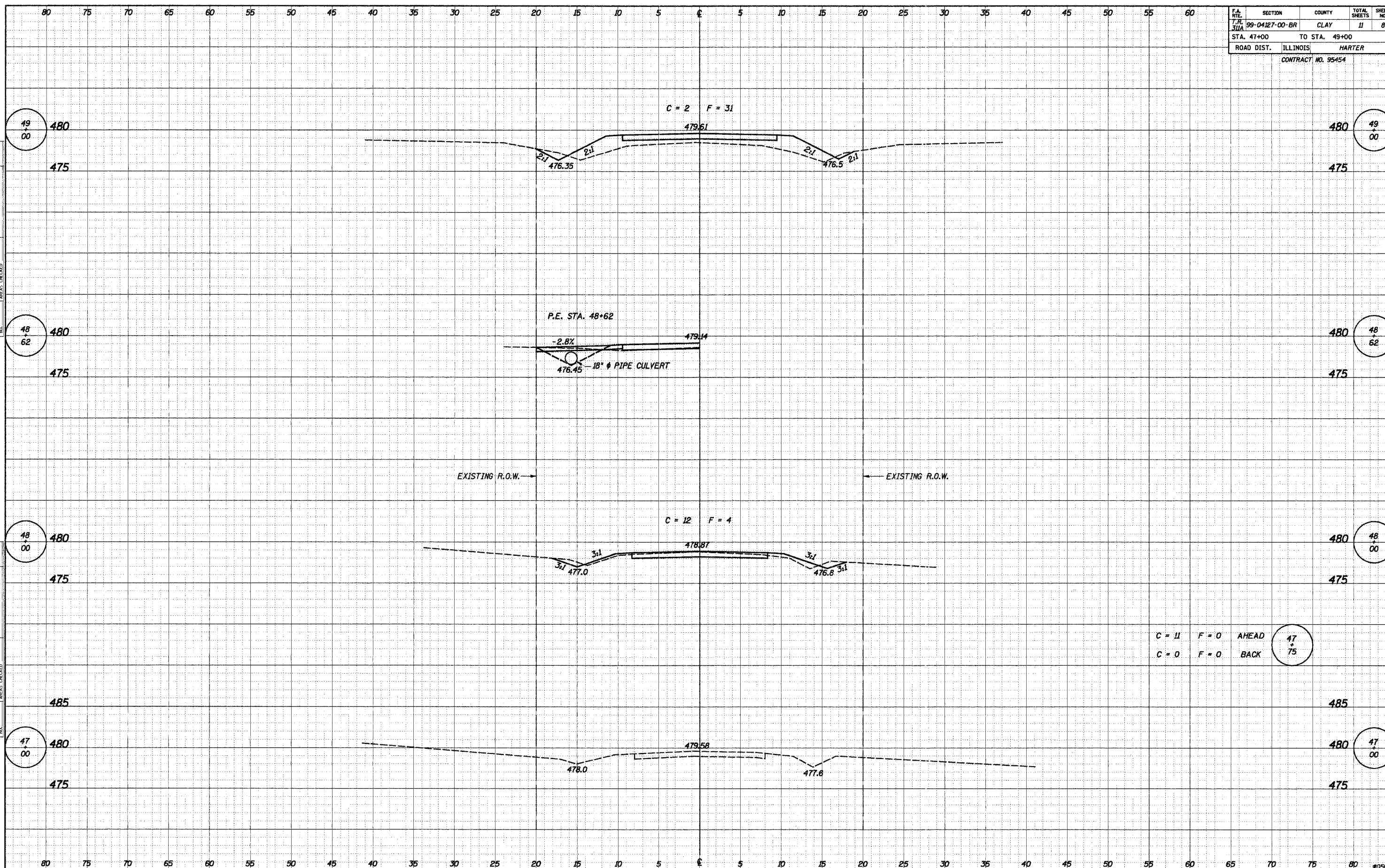
SECTION 99-04127-00-BR
 HARTER ROAD DISTRICT
 CLAY COUNTY
 STATION 50+00

4440 ASH GROVE SPRINGFIELD, IL 62711 (217) 793-8600 oasinc@insightbb.com	OZYURT AND STONE, INC. CONSULTING ENGINEERS	JOB NO.: 0502 FILE: 0502ABUT.DGN DATE: 03/20/06
---	---	---

F.A. R.T.E.	SECTION	COUNTY	TOTAL SHEETS	SHEET NO.
99-04127-00-BR	CLAY	II	8	
STA. 47+00 TO STA. 49+00				
ROAD DIST. ILLINOIS		HARTER		
CONTRACT NO. 95454				

DATE
BY
FINN SURVEY NO. []
SURVEY []
NOTE BOOK []
PLOTTED []
TEMP. []
AREAS CHECKED []
AS SHOWN []

DATE
BY
S.A.P.
ORIGINAL SURVEY NO. []
SURVEY []
NOTE BOOK []
PLOTTED []
TEMP. []
AREAS CHECKED []
AS SHOWN []

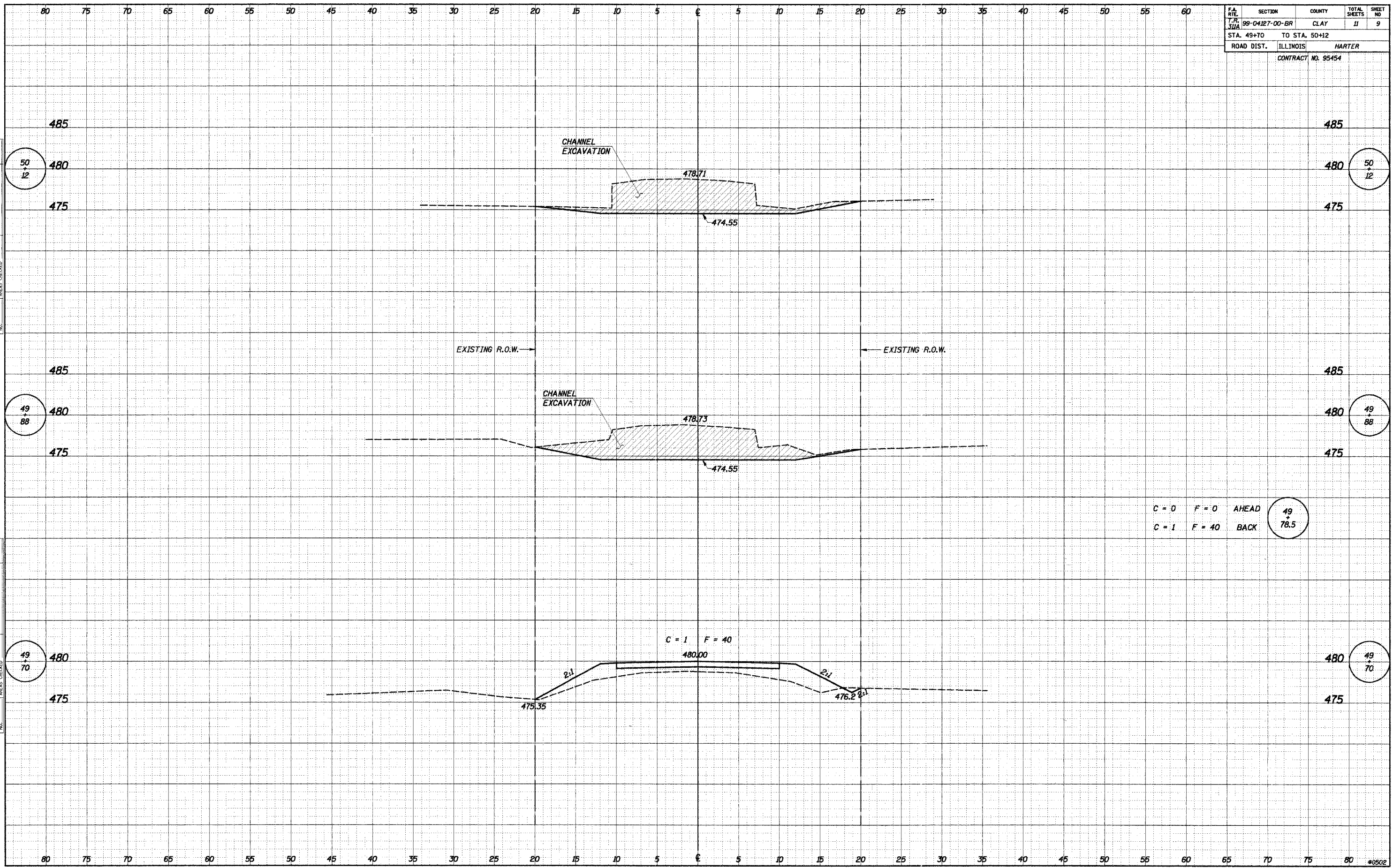


C = 11 F = 0 AHEAD
C = 0 F = 0 BACK

F.A. RTE.	SECTION	COUNTY	TOTAL SHEETS	SHEET NO.
T.R. 311A	99-04127-00-BR	CLAY	11	9
STA. 49+70		TO STA. 50+12		
ROAD DIST.	ILLINOIS	HARTER		
CONTRACT NO. 95454				

DATE	
BY	
SURVEYED	
TEMPLATE	
AREAS CHECKED	
NO.	

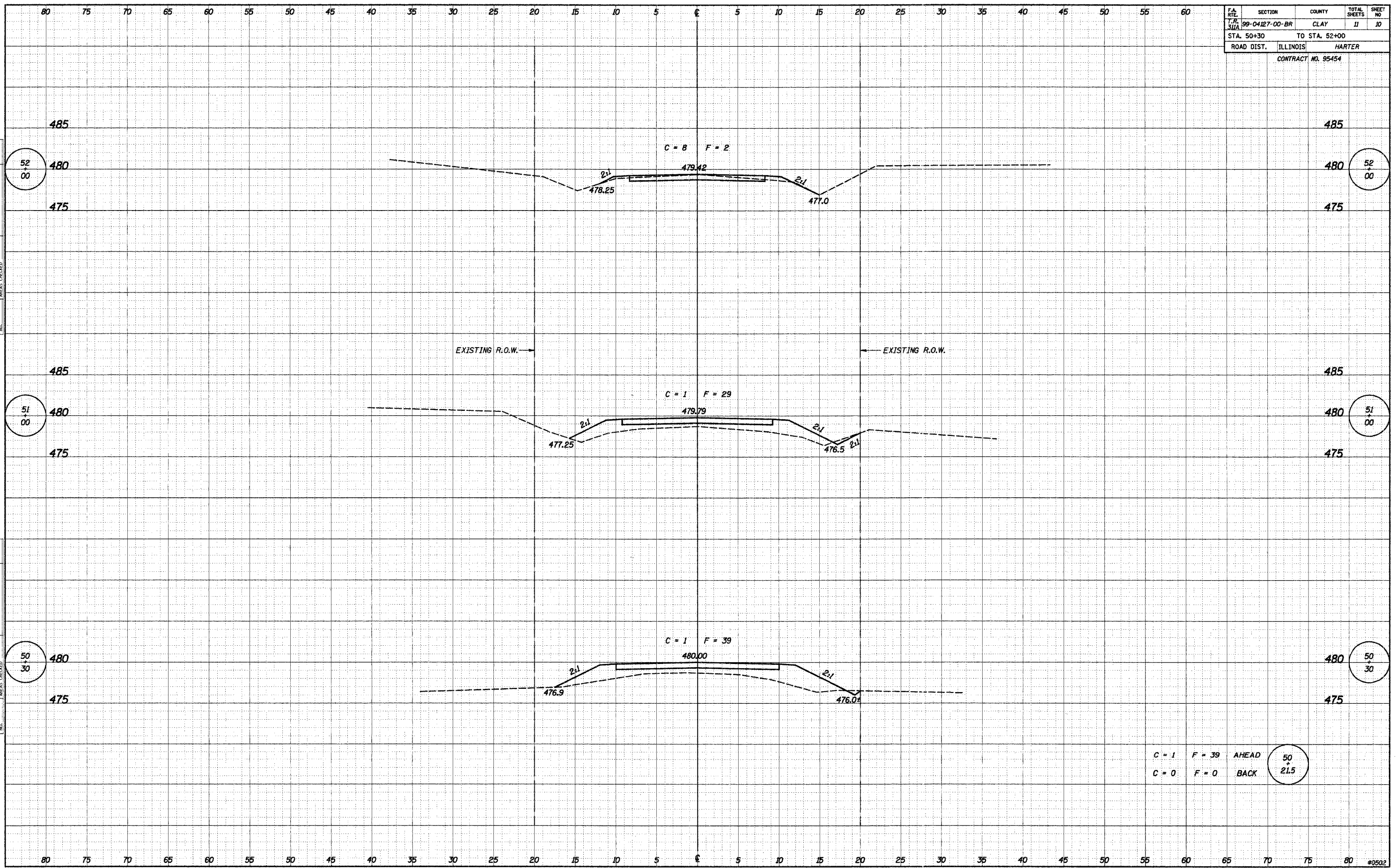
DATE	09/02/05
BY	S.A.P.
SURVEYED	
TEMPLATE	
AREAS CHECKED	
NO.	



F.A. R.T.E.	SECTION	COUNTY	TOTAL SHEETS	SHEET NO.
T.R. 31/A	99-04127-00-BR	CLAY	11	10
STA. 50+30		TO STA. 52+00		
ROAD DIST. ILLINOIS		HARTER		
CONTRACT NO. 95454				

DATE	
BY	
NO.	
FINAL SURVEY NOTE BOOK NO.	
SURVEYED	
PLOTTED	
TEMPLATE	
AREAS	
CHECKED	

DATE	09/02/05
BY	S.A.P.
NO.	
ORIGINAL SURVEY NOTE BOOK NO.	
SURVEYED	
PLOTTED	
TEMPLATE	
AREAS	
CHECKED	



$C = 1$ $F = 39$ AHEAD
 $C = 0$ $F = 0$ BACK

50+21.5

F.A. RTE.	SECTION	COUNTY	TOTAL SHEETS	SHEET NO.
T.R. 311A	99-04127-00-BR	CLAY	11	11
ROAD DIST.		ILLINOIS	HARTER	
STA. 53+00		CONTRACT NO. 95454		

DATE	BY
SURVEYED	DATE
TEMPLATE	
AREAS	
AREAS CHECKED	
FINAL SURVEY	
NOTE BOOK	
NO.	

DATE	BY
09/03/05	
SURVEYED	DATE
TEMPLATE	
AREAS	
AREAS CHECKED	
ORIGINAL SURVEY	
NOTE BOOK	
NO.	

