

STATE OF ILLINOIS DEPARTMENT OF TRANSPORTATION PLANS FOR PROPOSED FEDERAL AID SECONDARY PROJECT

ROUTE	SECTION	COUNTY	SHEET NO.	TOTAL SHEETS
CH6	99-00102-00-FP	RICHLAND	1	2
FEDERAL ROAD DISTRICT 7	ILLINOIS	CONTRACT NO. 95455		

SHEET NO.	TITLE
1	COVER SHEET
2	SUMMARY OF QUANTITIES

SECTION NO. 99-00102-00-FP
PROJECT NO. SR-803(123)

C-97-021-00
F.A.S. ROUTE 803
RICHLAND COUNTY

STANDARDS

000001-04	STANDARDS & ABBREVIATIONS
702001-06	TRAFFIC CONTROL
BLR-22-4	TRAFFIC CONTROL

STATION OMISSION
265+00 TO 126+65

DESIGN CLASS: RURAL MAJOR COLLECTOR
ADT: 325
SPEED = 40 MPH

J.U.L.I.E. 1-800-892-0123

THESE PLANS WERE PREPARED BY ME OR BY A FULL-TIME MEMBER OF MY STAFF WORKING UNDER MY PERSONAL SUPERVISION.

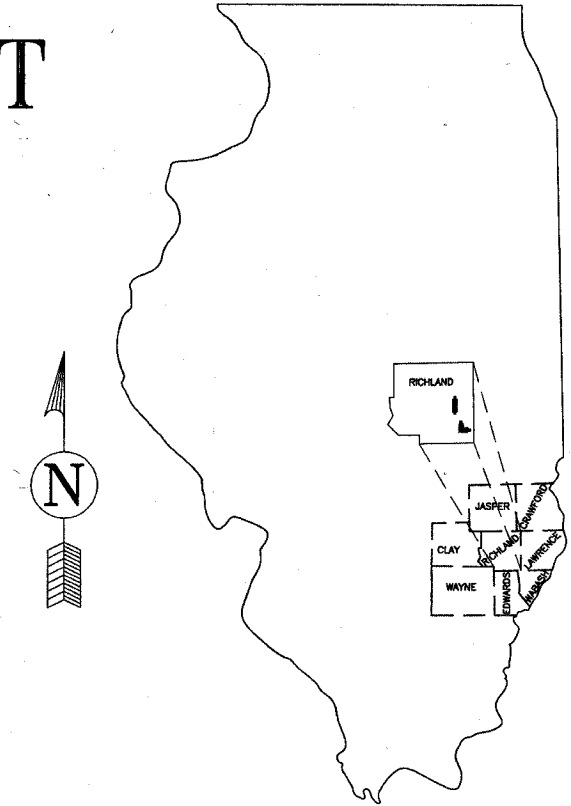
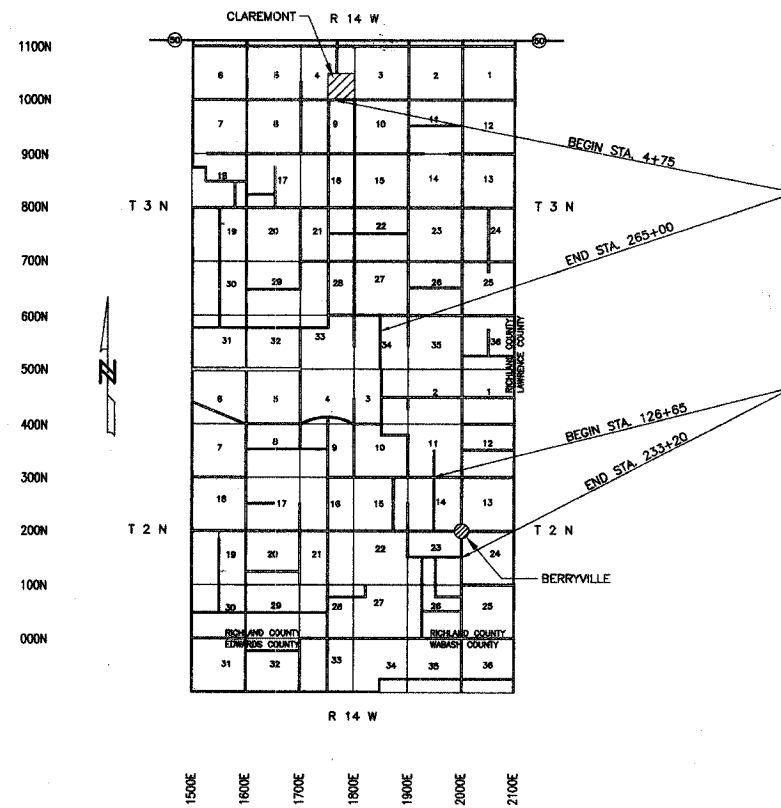
Danny J. Colwell
DANNY J. COLWELL
ILLINOIS LICENSED PROFESSIONAL ENGINEER
NO. 062-054895



LICENSE EXPIRES 11-30-07

DANNY J. COLWELL
RICHLAND COUNTY ENGINEER
4334 N. MERIDIAN ROAD
OLNEY, ILLINOIS 62450

CONTRACT NO. 95455

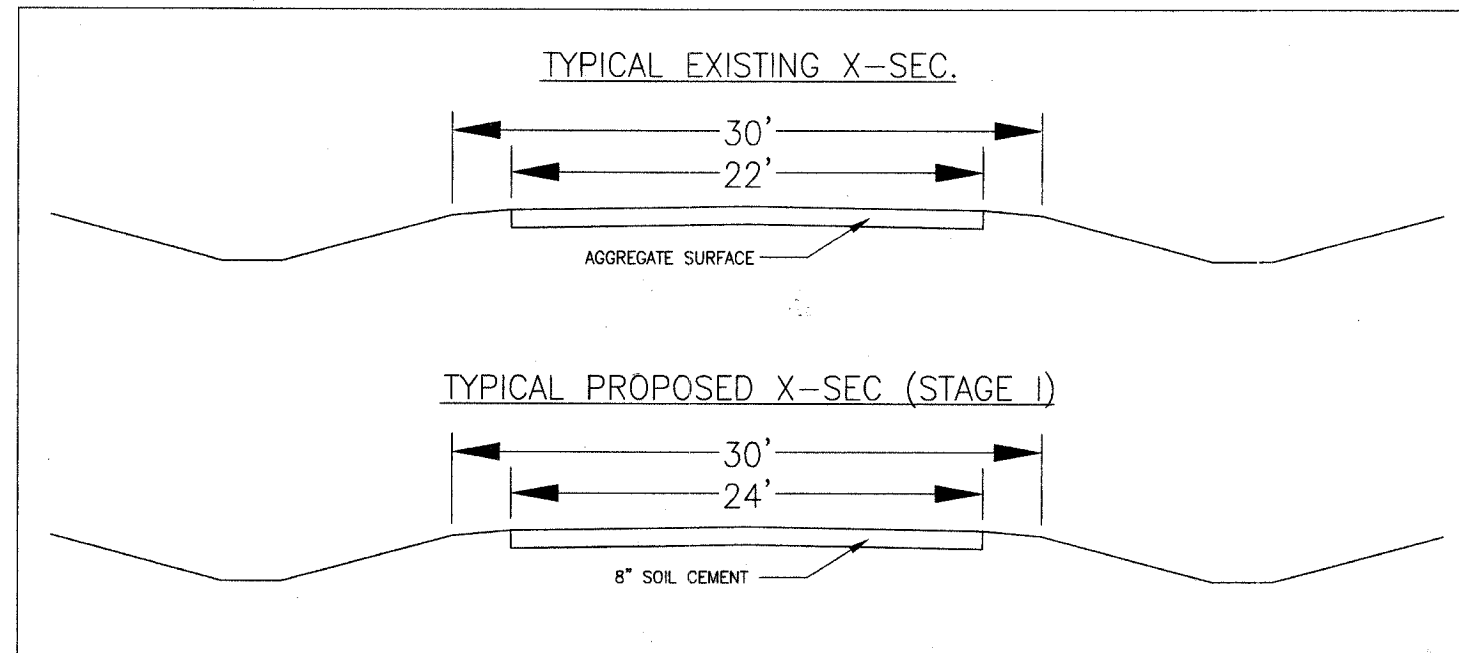


LOCATION OF PROJECT INDICATED THUS:

APPROVED	<u>4/6</u> 20 06 <i>Danny J. Colwell</i>	
	COUNTY ENGINEER	
PASSED	<u>4/6</u> 20 06 <i>Maureen Kead</i>	
	DISTRICT SEVEN ENGINEER OF LOCAL ROADS AND STREETS	
Releasing For Bid Based on Limited Review	<u>4/6</u> 20 06 <i>Christ M. Rood</i>	
	DEPUTY DIRECTOR OF HIGHWAYS REGION FOUR ENGINEER	
STATE OF ILLINOIS DEPARTMENT OF TRANSPORTATION		

SECTION 99-00102-00-FP NET LENGTH 36,680.0 FT OR 6.947 MI.

ROUTE	SECTION	COUNTY	SHEET NO.	TOTAL SHEETS
CH6	99-00102-00-FP	RICHLAND	2	2
FEDERAL ROAD DISTRICT 7	ILLINOIS	CONTRACT NO. 95455		
SUMMARY OF QUANTITIES				



GENERAL NOTES

S.D.T. 2015 PC=155 SU=17 MU=3 CLASS III ROAD
 MINIMUM SOIL SUPPORT I.B.R.=3 T.F.=0.025
 PERCENT OF S.D.T. IN TRAFFIC LANE P=50% S=50% M=50%
 PAVEMENT STRUCTURE: STAGE I - 8" SOIL CEMENT BASE COURSE (500 PSI MIN.)
 WITH A-2 SEAL COAT (BY OTHERS)
 STAGE II - 2" CLASS I 22' WIDE (FUTURE)

SUMMARY OF QUANTITIES

CODE #	ITEM	UNITS	QUAN
35200300	PROCESSING SOIL-CEMENT BASE COURSE 8"	SQ YD	97,812
35200500	CEMENT	100 WT	55,168
67100100	MOBILIZATION	L SUM	1
			D000