

ROUTE	SECTION	COUNTY	TOT. SHTS.	SHT.
T.R. 259	04-03114-00-BR	JEFFERSON	14	1
CASNER TOWNSHIP ROAD DISTRICT				

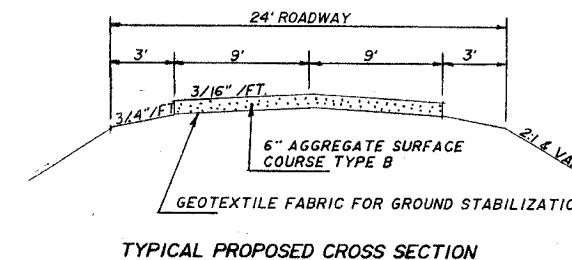
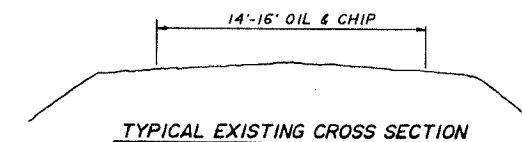
CONTRACT 95470

INDEX OF SHEETS

- COVER SHEET- INDEX OF SHEETS, TYPICAL EXISTING AND PROPOSED CROSS-SECTIONS, SUMMARY OF QUANTITIES, LOCATION MAP, GENERAL NOTES
- PLAN AND PROFILE
- GENERAL PLAN AND ELEVATION
- P.P.C. DECK BEAM 60' SUPERSTRUCTURE
- P.P.C. DECK BEAM DETAILS-36"
- P.P.C. DECK BEAM DETAILS-48"
- P.P.C. DECK BEAM-PILE BENT ABUTMENT
- P.P.C. DECK BEAM-PILE BENT PIER
- STEEL RAILING, TYPE S-1
- PILE DETAILS
- NAMEPLATE
- CROSS-SECTIONS STA. 14+93.80-STA. 18+50
- CROSS-SECTIONS STA. 19+00-STA. 23+50
- CROSS-SECTIONS STA. 24+00-STA. 28+00

STATE OF ILLINOIS
DEPARTMENT OF TRANSPORTATION

PLANS FOR PROPOSED
BRIDGE REPLACEMENT AND REHABILITATION PROGRAM



SECTION 04-03114-00-BR
T.R. 259 JEFFERSON CO.
PROJECT NO. BROS-081(54)
JOB NO. C-97-065-06

STANDARDS

- 000001-04
- 515001-02
- 631026-02
- 702001-06
- B.L.R. 21-6
- B.L.R. 22-4
- B.L.R. 23-1

GENERAL NOTES

THIS SECTION SHALL BE CONSTRUCTED IN ACCORDANCE WITH PLANS, STANDARD SPECIFICATIONS FOR ROAD AND BRIDGE CONSTRUCTION ADOPTED JANUARY 1, 2002 BY THE ILLINOIS DEPARTMENT OF TRANSPORTATION, ALL APPLICABLE SUPPLEMENTAL SPECIFICATIONS AND RECURRING SPECIAL PROVISIONS AND THE SPECIAL PROVISIONS FOR THIS PROJECT.

PLAN ELEVATIONS ARE U.S.G.S. DATUM AND ARE THE ELEVATIONS OF THE FINISHED SURFACES.

ANY EXCAVATION DEEMED SUITABLE FOR USE BY THE ENGINEER MAY BE USED IN THE EMBANKMENT AS DIRECTED BY THE ENGINEER.

THE EXISTING STRUCTURE SHALL REMAIN IN SERVICE AS LONG AS POSSIBLE DURING CONSTRUCTION. WHEN AGREED TO BY THE ENGINEER AND THE CONTRACTOR, IT SHALL THEN BE REMOVED ENTIRELY FROM THE SITE BY THE CONTRACTOR.

THE WORK IN THIS SECTION SHALL CONSIST OF THE CONSTRUCTION OF A THREE SPAN PRECAST PRESTRESSED CONCRETE DECK BEAM BRIDGE WITH OPEN ABUTMENTS ON CONCRETE CAPS AND ENCASED H-PILES, EARTHWORK, DRAINAGE, AND ANY INCIDENTAL WORK NECESSARY TO COMPLETE THE SECTION.

UTILITIES

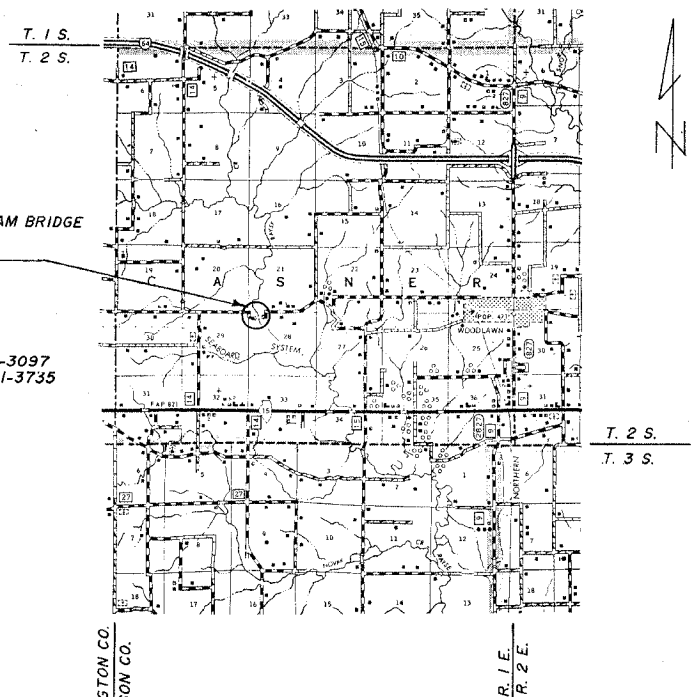
TELEPHONE-FRONTIER COMM.

SUMMARY OF QUANTITIES			
ITEM	CODE	UNIT	QUAN.
CONTROLLED LOW-STRENGTH MATERIAL	20013825	CU. YD.	19
TREE REMOVAL (6 TO 15 UNITS DIAMETER)	20100110	UNIT	858
TREE REMOVAL (OVER 15 UNITS DIAMETER)	20100210	UNIT	384
EARTH EXCAVATION	20200100	CU. YD.	1,887
CHANNEL EXCAVATION	20300100	CU. YD.	917
FURNISHED EXCAVATION	20400800	CU. YD.	2,682
SEEDING, CLASS 1	25000100	ACRE	0.94
TREES	25301500	EACH	170
STONE DUMPED RIPRAP, CLASS A4	28100807	TON	800
AGGREGATE SURFACE COURSE, TYPE B	40200800	TON	1600
REMOVAL OF EXISTING STRUCTURES	50100100	EACH	1
CONCRETE STRUCTURES	50300225	CU. YD.	30.2
PRECAST PRESTRESSED CONCRETE DECK BEAMS (27" DEPTH)	50400505	SO. FT.	4,320
STUD SHEAR CONNECTORS	50500505	EACH	48
REINFORCEMENT BARS	50800105	POUND	3,100
STEEL RAILING, TYPE S1	50900205	FOOT	360
FURNISHING STEEL PILES HP 12X53	51201600	FOOT	275
FURNISHING STEEL PILES HP 10X42	51201400	FOOT	192
DRIVING STEEL PILES	51202700	FOOT	423
TEST PILE STEEL HP 12X53	51203600	EACH	1
CONCRETE ENCASEMENT	51204315	CU. YD.	22.2
NAME PLATES	51500100	EACH	1
PIPE CULVERTS TYPE 2 RCCP 24"	54201279	FOOT	45
TRAFFIC BARRIER TERMINAL, TYPE 1	LR631020	EACH	2
TRAFFIC BARRIER TERMINAL, TYPE 5A	63100075	EACH	2
MOBILIZATION	67100100	L. SUM	1
SETTING PILES IN ROCK	Z0665000	EACH	4

SEC. 04-03114-00-BR
3 SPAN P.P.C. DECK BEAM BRIDGE
BEGINS STA. 14+93.80
ENDS STA. 28+00.00

EXISTING STR. 041-3097
PROPOSED STR. 041-3735

LOCAL RD.
30 M.P.H.
ADT 100/150



SCALE 3/4"=1 MI.

J. U. L. I. E.
JOINT UTILITY LOCATING INFORMATION
FOR EXCAVATION
1-800-892-0123
ILLINOIS1CALL.COM

APPROVED 3-15 2006
John S. Schinke
62-33619 REGISTERED PROFESSIONAL ENGINEER OF ILLINOIS
COUNTY ENGINEER
JEFFERSON COUNTY HIGHWAY DEPT.
750 OLD FAIRFIELD RD.
MT. VERNON, IL. 62864
PH. (618) 244-8031
LICENSE EXP. 11-30-07

PASSED 4/7 2006
Maurice J. Kestel
DISTRICT SEVEN ENGINEER OF LOCAL ROADS AND STREETS

Releasing for Bid based on Limited Review 4/7 2006
Christina M. Reed
DEPUTY DIRECTOR OF HIGHWAYS
REGION FOUR ENGINEER

STATE OF ILLINOIS
DEPARTMENT OF TRANSPORTATION

TOTAL SECTION LENGTH=1,306.20'=0.25 MI.
OMISSION=0.00'
NET SECTION LENGTH=1,306.20'=0.25 MI.