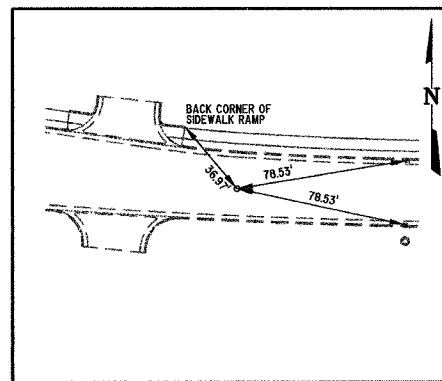
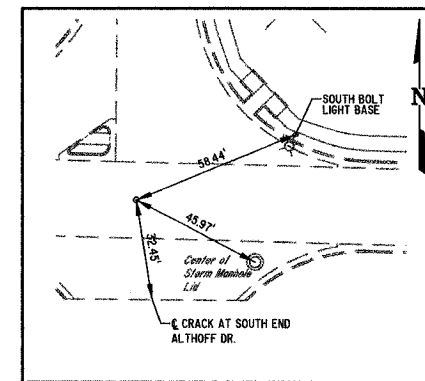


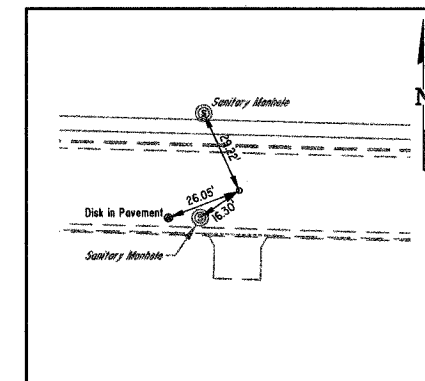
ROUTE NO.	SECTION	COUNTY	TOTAL SHEETS	SHEET NO.
S&A F.A.	05-0007- 03-SP	EFFINGHAM	54	9
FED. ROAD DIST. NO. 7		ILLINOIS	FED. AID PROJECT-	
CONTRACT #95473				



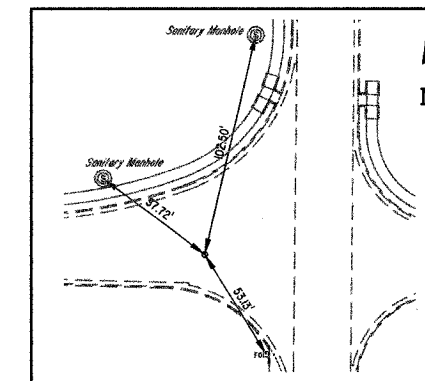
P.I. STA. 205+72.94
1/4" DIA. IRON PIN
(TECHNOLOGY DRIVE)



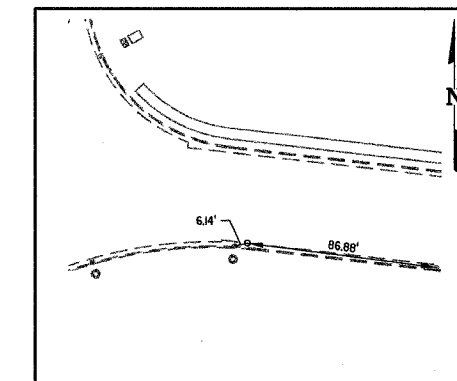
P.O.T. STA. 216+00
1/4" DIA. IRON PIN
(TECHNOLOGY DRIVE)



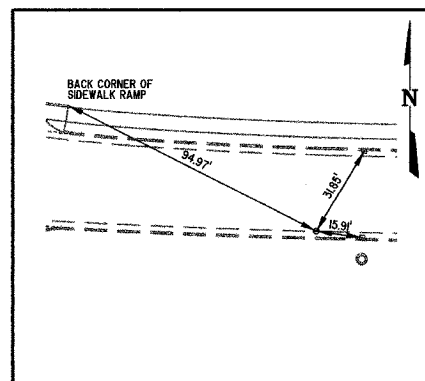
P.O.T. STA. 221+50
1/4" DIA. IRON PIN
(TECHNOLOGY DRIVE)



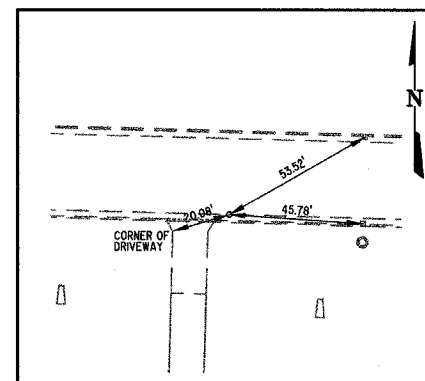
P.O.T. STA. 234+00
1/4" DIA. IRON PIN
(TECHNOLOGY DRIVE)



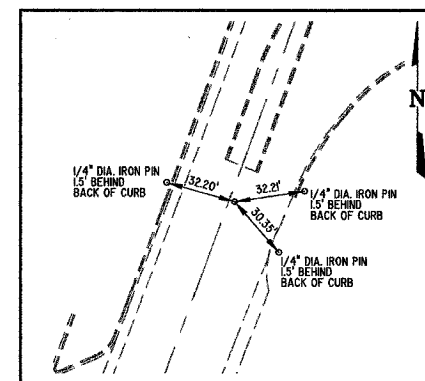
CONTROL POINT #190
NAIL & WASHER AT EDGE OF PAVEMENT
(20.08'RI, Sta 201+25.81)
(TECHNOLOGY DRIVE)



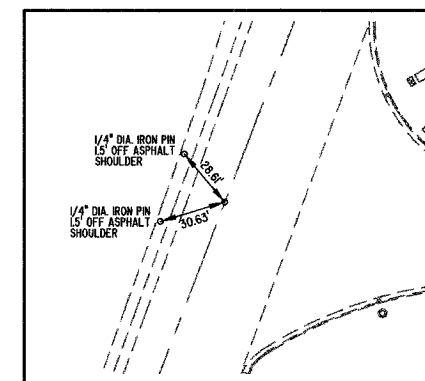
CONTROL POINT #191
NAIL & WASHER AT EDGE OF PAVEMENT
(23.93'RI, Sta 206+34.23)
(TECHNOLOGY DRIVE)



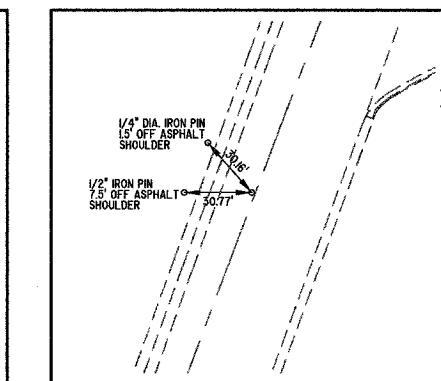
CONTROL POINT #196
NAIL & WASHER AT EDGE OF PAVEMENT
(13.01'RI, Sta 231+49.41)
(TECHNOLOGY DRIVE)



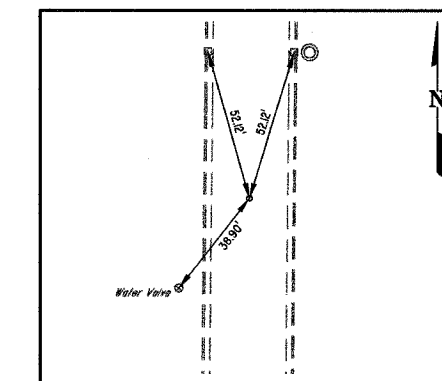
P.I. STA. 57+61.90
NAIL & WASHER
(U.S. ROUTE 45)



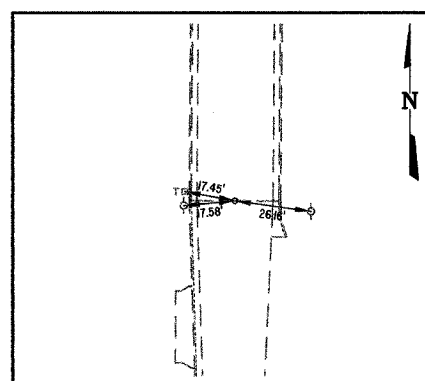
P.O.C. STA. 63+60.63
NAIL & WASHER
(U.S. ROUTE 45)



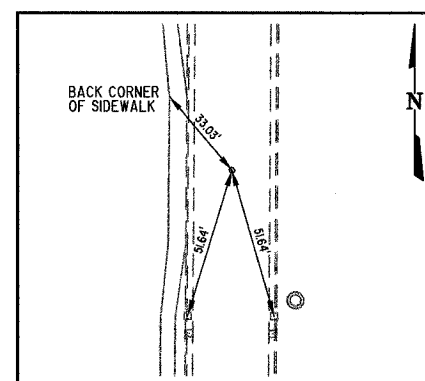
P.I. STA. 64+79.91
NAIL & WASHER
(U.S. ROUTE 45)



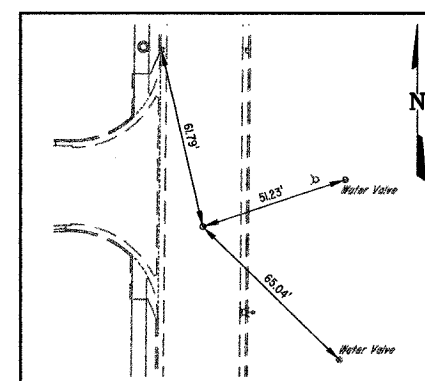
P.O.T. STA. 15+00 - STA. 165+00
1/4" DIA. IRON PIN
(ALTHOFF DRIVE)



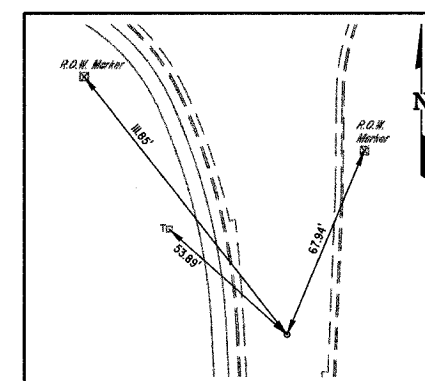
P.O.T. STA. 292+00
1/4" DIA. IRON PIN
(WILLENBORG STREET)



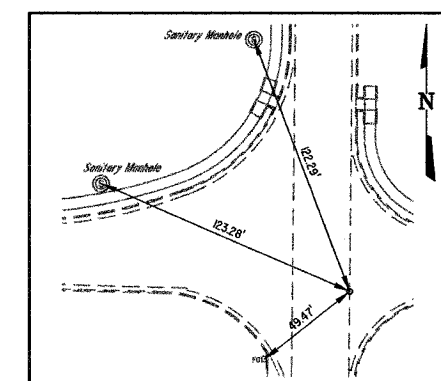
P.O.T. STA. 300+00
1/4" DIA. IRON PIN
(WILLENBORG STREET)



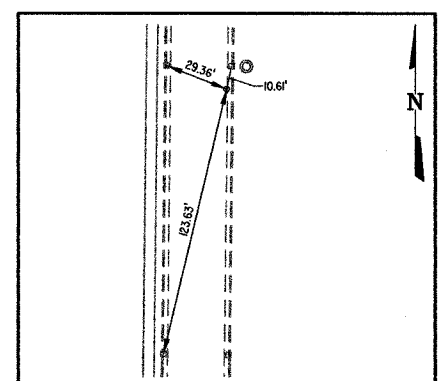
P.O.T. STA. 307+00
1/4" DIA. IRON PIN
(WILLENBORG STREET)



P.I. STA. 319+26.31
1/4" DIA. IRON PIN
(WILLENBORG STREET)



CONTROL POINT #197
NAIL & WASHER AT EDGE OF PAVEMENT
(13.05'RI, Sta 301+87.15)
(WILLENBORG STREET)



CONTROL POINT #198
NAIL & WASHER AT EDGE OF PAVEMENT
(12.69'RI, Sta 316+89.60)
(WILLENBORG STREET)

MILANO & GRUNLOH ENGINEERS, LLC
44 WEST WASHINGTON
P.O. BOX 897
EFFINGHAM, ILLINOIS 62404
PHONE: (217) 347-7322
(800) 617-2774
FAX #: (217) 342-3433

ALIGNMENT TIES
TECHNOLOGY DRIVE, SECTION 3
CITY OF EFFINGHAM, ILLINOIS

File name: S:\DWG\05\05009\dwg\Alignment Ties.dwg
Plot date: 03/23/06 at 12:00