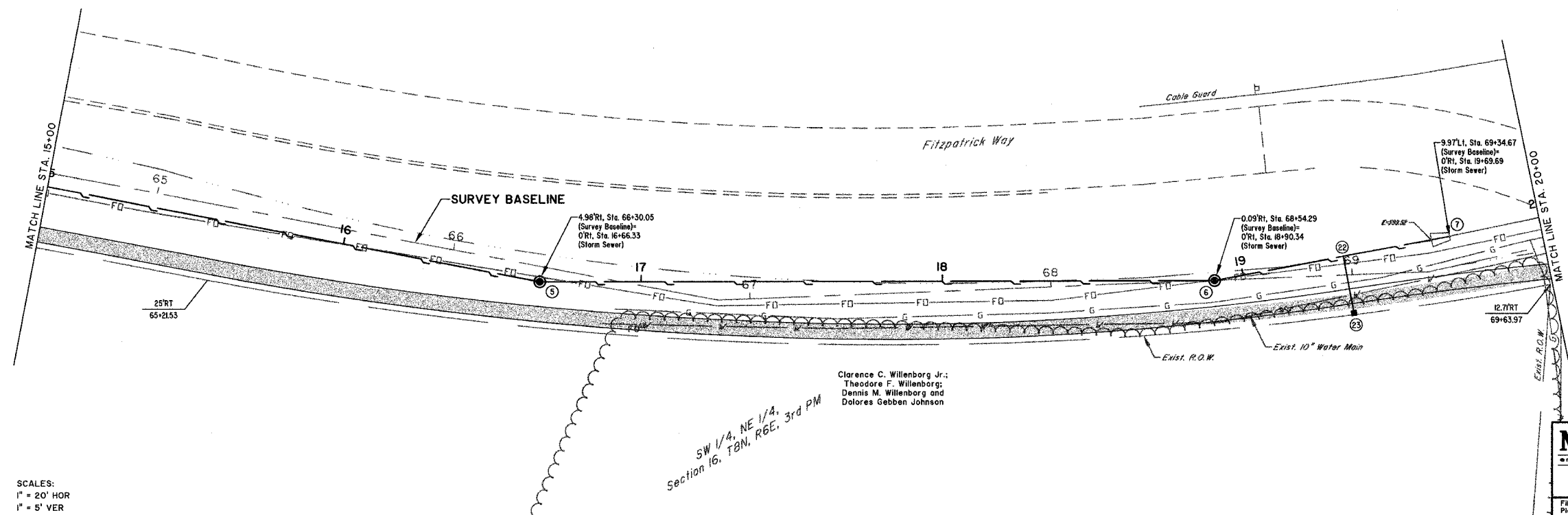
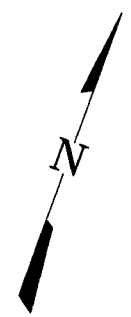


ROUTE NO.	SECTION	COUNTY	TOTAL SHEETS	SHEET NO.
S&L P.A.	05-00087-03-SF	EFFINGHAM	54	20
FED. ROAD DIST. NO. 7	ILLINOIS	FED. AID PROJECT-		

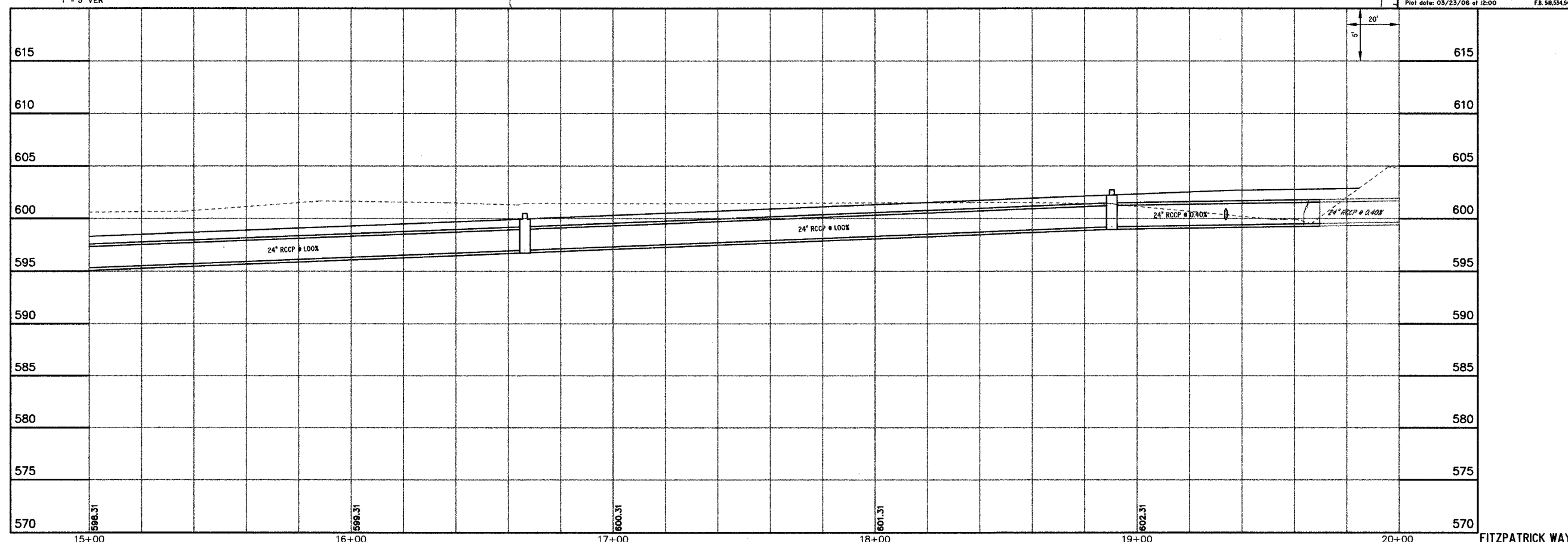
CONTRACT #95473



BM #7
 CAP BOLT AT POINT OF "OPEN" ARROW ON FIRE HYDRANT, WEST SIDE OF DRIVEWAY TO WILLENBORG'S HOUSE.
 23' RT, Sta. 63+56.50, ELEV. +604.33

MILANO & GRUNLOH ENGINEERS, LLC
 14 WEST WASHINGTON
 P.O. BOX 897
 EFFINGHAM, ILLINOIS 62401
 Phone: (618) 347-7252
 (618) 677-2774
 Fax #: (618) 347-9433
 Web Address: www.mgengineers.com
 Design Firm #: 184-00308

File name: S:\DWG\05\050008\dwg\Section 3.dwg
 Plot date: 03/23/06 at 12:00 P.M. File: 98.534.549



FITZPATRICK WAY