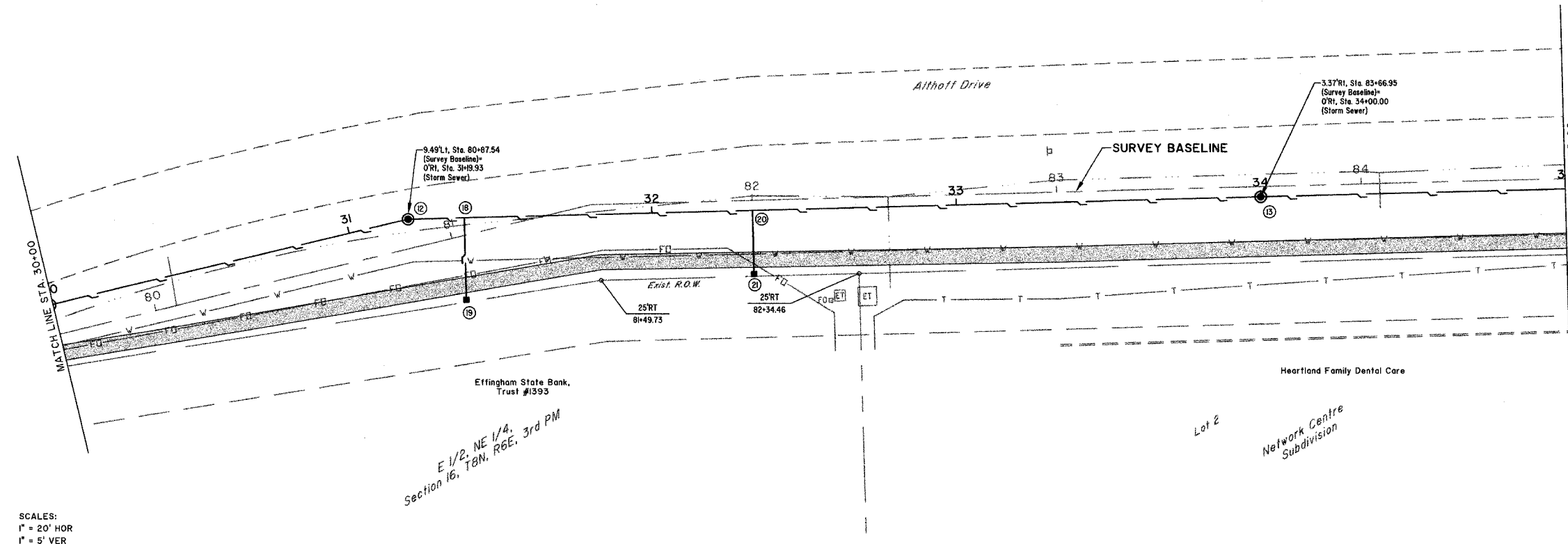
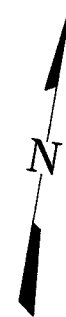


ROUTE NO.	SECTION	COUNTY	TOTAL SHEETS	SHEET NO.
881	05-0087-03-2P	EFFINGHAM	54	23
F.A.				
FED. ROAD DIST. NO. 7	ILLINOIS	FED. AID PROJECT-		

CONTRACT #95473



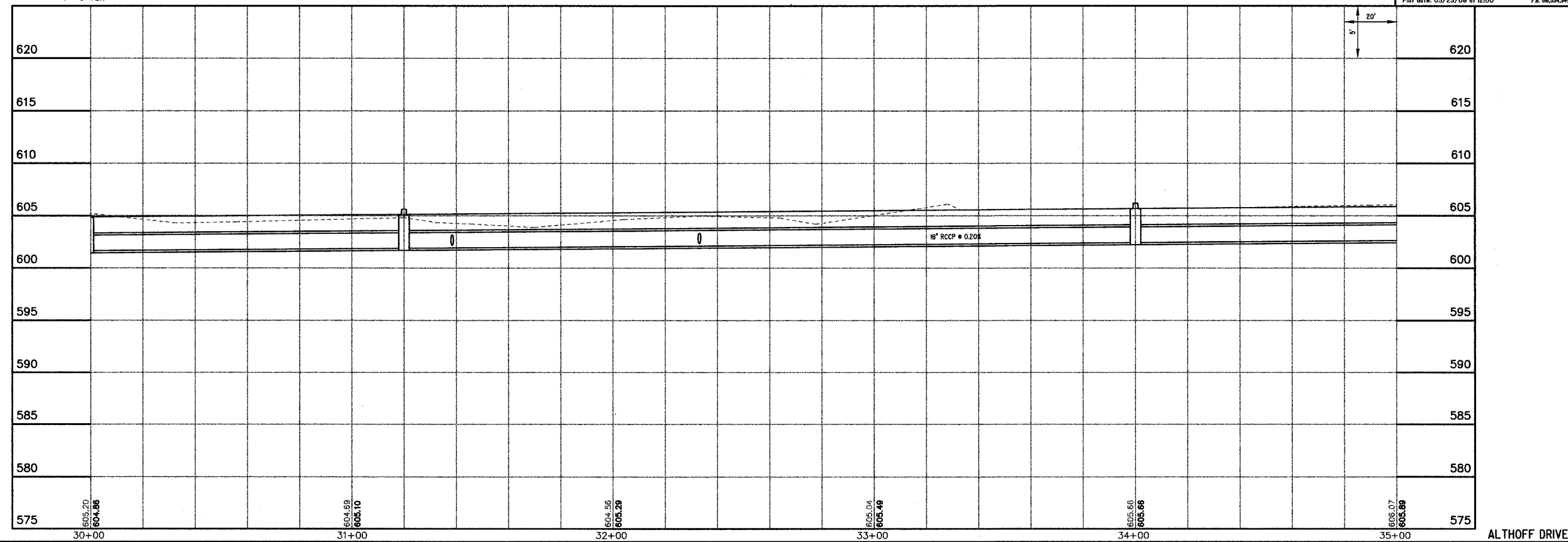
SCALES:
 1" = 20' HOR
 1" = 5' VER

BM #9
 CAP BOLT AT POINT OF "OPEN" ARROW
 ON FIRE HYDRANT AT SOUTHWEST CORNER
 OF HEARTLAND DENTAL SITE.
 ELEV.=68.25

M
l
u
g
e
n
g
i
n
g
e
r
s
l
l
c

MLAND & GRUNLOH ENGINEERS, LLC
 84 WEST WASHINGTON
 P.O. BOX 897
 EFFINGHAM, ILLINOIS 62401
 Phone: (217) 347-7262
 (800) 677-2774
 Fax: (217) 342-3453
 Web Address: www.mylandeng.com
 Design Firm #: 84-00308

File name: S:\DWG\05\05008\dwg\Section 3.dwg
 Plot date: 03/23/06 at 12:00 P.M. 38,334,949



ALTHOFF DRIVE