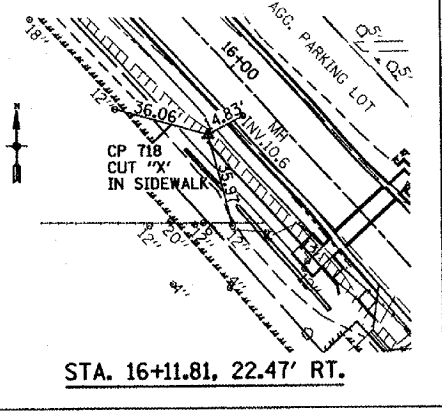
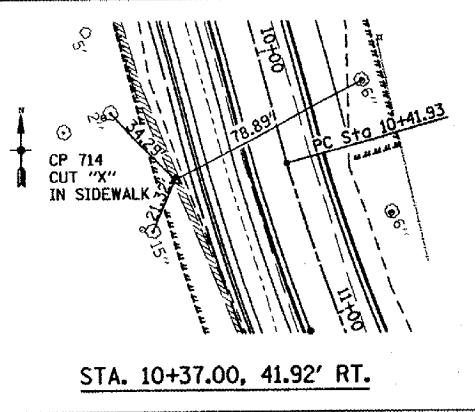
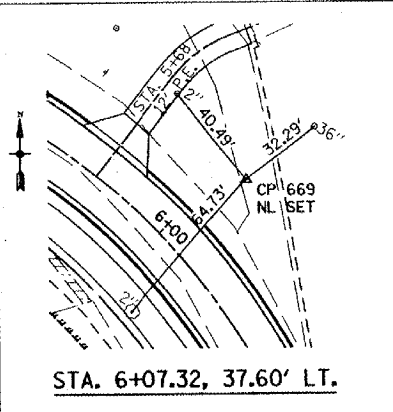
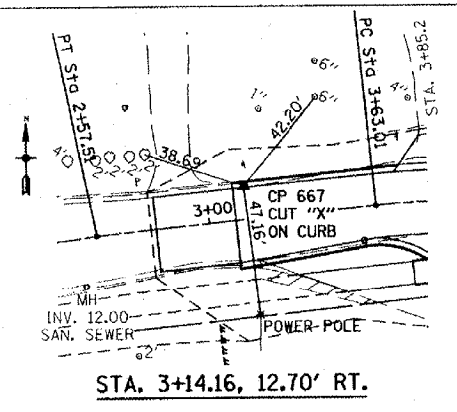


SEIBERT ROAD PROPOSED ALIGNMENT - PHASE I

BENCHMARKS

- CP 667 - CUT "X" ON CURB AT STA. 3+14.16, 12.68' LT. PROPOSED ϕ SEIBERT ROAD. ELEV. 660.04
- CP 714 - CUT "X" IN SIDEWALK AT STA. 10+37.00, 41.92' RT. PROPOSED ϕ SEIBERT ROAD. ELEV. 661.21
- CP 718 - CUT "X" IN SIDEWALK AT STA. 16+11.81, 22.47' RT. PROPOSED ϕ SEIBERT ROAD. ELEV. 644.70



REVISIONS	
NAME	DATE

ILLINOIS DEPARTMENT OF TRANSPORTATION
ALIGNMENT, TIES AND BENCHMARKS
 SEIBERT ROAD
 SECTION 00-00007-01-PV
 ST. CLAIR COUNTY

SCALE: VERT. _____
 HORIZ. _____

DATE _____ DRAWN BY _____
 CHECKED BY _____