

**THOUVENOT,
WADE &
MOERCHEN, INC.**
ENGINEERS ♦ SURVEYORS ♦ PLANNERS



CORPORATE OFFICE

4940 OLD COLLINSVILLE RD.
SWANSEA, ILLINOIS 62226
TEL (618) 624-4488
FAX (618) 624-6688
corp@twm-inc.com

WATERLOO OFFICE

118 EAST THIRD STREET
WATERLOO, ILLINOIS 62298
TEL (618) 939-5050
FAX (618) 939-3938
waterlootwm-inc.com

ST. LOUIS OFFICE

1001 CRAIG ROAD, SUITE 260
ST. LOUIS, MISSOURI 63146
TEL (314) 236-5052
FAX (314) 872-2194
stlouis@twm-inc.com

PROFESSIONAL REGISTRATION	LICENSE NO.
ILLINOIS PROFESSIONAL DESIGN FIRM	184-00220
PROFESSIONAL ENGINEERING CORP.	62-035370
PROFESSIONAL STRUCTURAL ENGR. CORP.	01-005202
ILLINOIS PROF. LAND SURVEYING CORP.	048-000029
MISSOURI PROFESSIONAL ENGR. CORP.	MC 000528
MISSOURI LAND SURVEYING CORP.	MC 000046

SEAL

Renewed Date: _____
Signature Date: _____

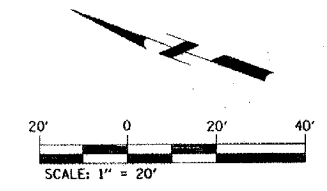
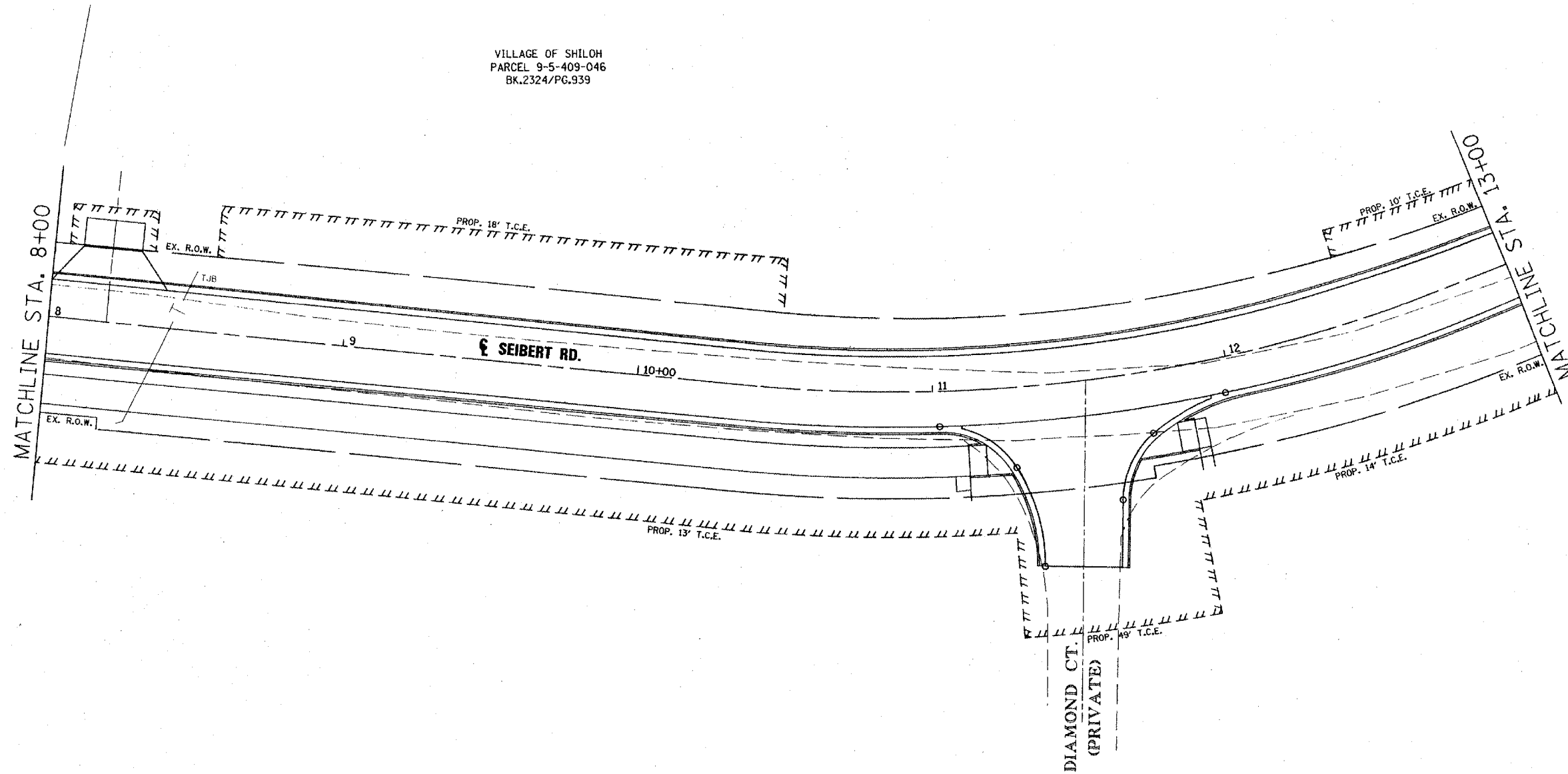
STATEMENT OF RESPONSIBILITY
I hereby certify that the document herein to be authenticated by my seal is restricted to this sheet, and I hereby disclaim any responsibility for all other drawings, specifications, estimates, reports or other documents or instruments relating to or intended to be utilized for any other part of the architectural, engineering or survey project.

TITLE: **RIGHT-OF-WAY SHEETS**

PROJECT: **SEIBERT RD. ROADWAY ALIGNMENT
VILLAGE OF SHILOH
ST. CLAIR COUNTY, ILLINOIS**

REV.	DATE	DESCRIPTION
△	/ /	
△	/ /	

DRAWN BY:	SKK	SHEET 19 OF 40 SHEETS
DESIGNED BY:		
CHECKED BY:		
APPROVED BY:		
PROJECT NUMBER	T06010475	
<input checked="" type="checkbox"/> ISSUED FOR REVIEW <input type="checkbox"/> ISSUED FOR BIDDING <input type="checkbox"/> ISSUED FOR CONSTR. <input type="checkbox"/> RECORD DRAWING		



DATE	BY

DATE	BY

\$FILES \$DAYS \$TIMES