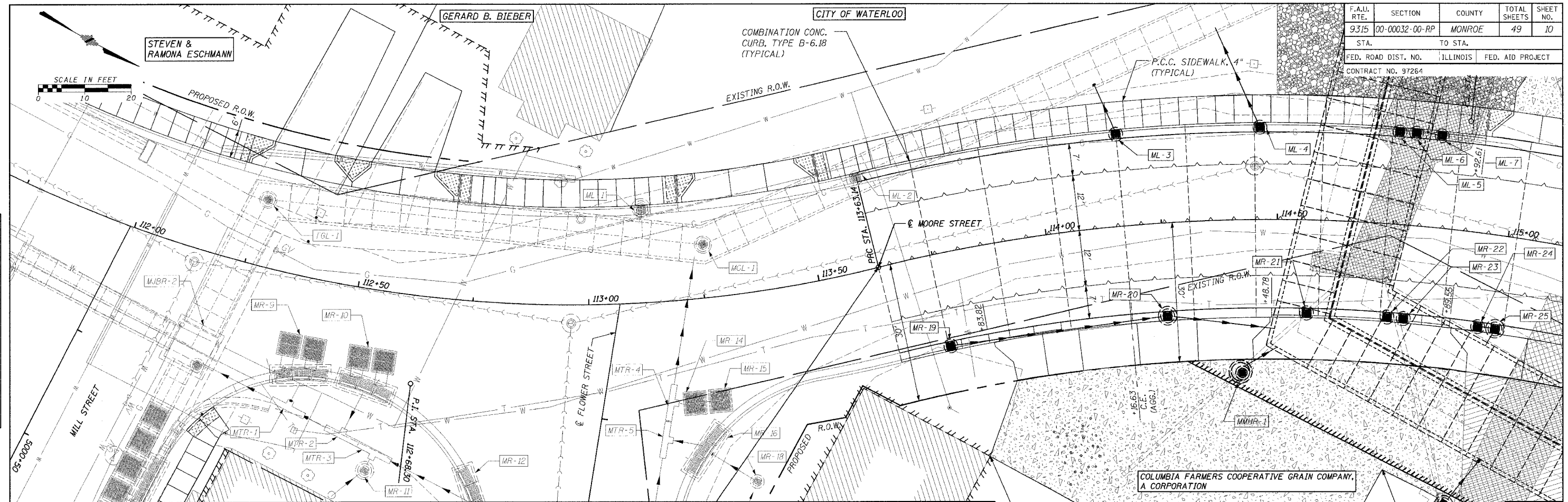


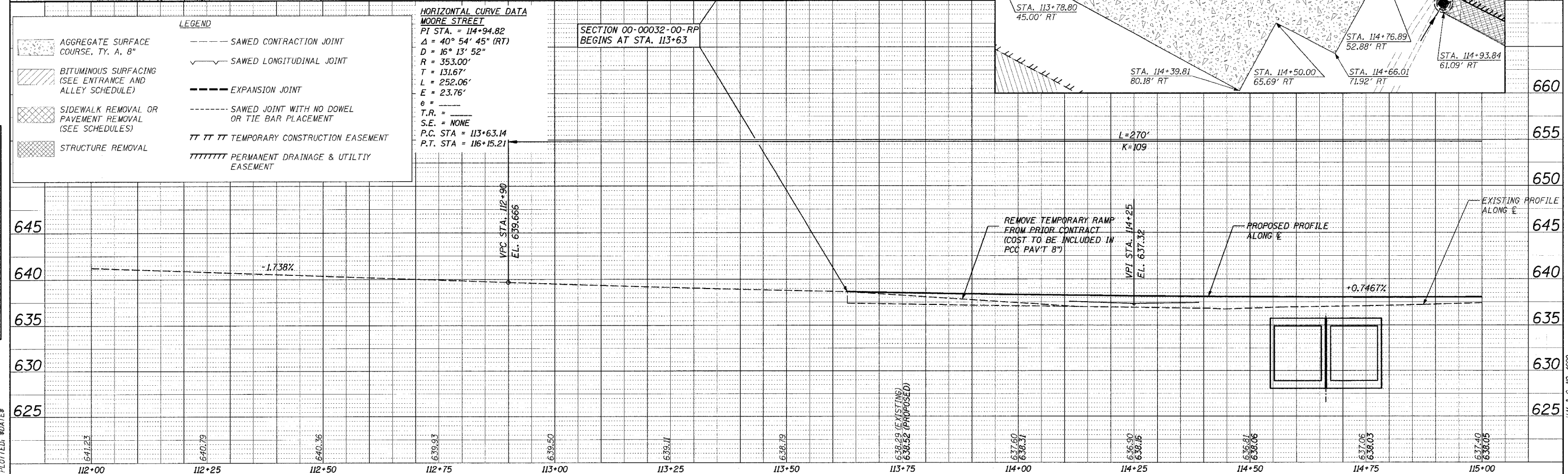
F.A.L. RTE.	SECTION	COUNTY	TOTAL SHEETS	SHEET NO.
9315	00-00032-00-RP	MONROE	49	10
STA. TO STA.				
FED. ROAD DIST. NO.		ILLINOIS	FED. AID PROJECT	
CONTRACT NO. 97264				



**HORIZONTAL CURVE DATA  
MOORE STREET**  
 P.I. STA. = 114+94.82  
 $\Delta = 40^\circ 54' 45''$  (RT)  
 $D = 16^\circ 13' 52''$   
 $R = 353.00'$   
 $T = 131.67'$   
 $L = 252.06'$   
 $E = 23.76'$   
 $e =$   
 $T.R. =$   
 $S.E. = NONE$   
 P.C. STA. = 113+63.14  
 P.T. STA. = 116+15.21

**LEGEND**

	AGGREGATE SURFACE COURSE, TY. A, 8"		SAWED CONTRACTION JOINT
	BITUMINOUS SURFACING (SEE ENTRANCE AND ALLEY SCHEDULE)		SAWED LONGITUDINAL JOINT
	SIDEWALK REMOVAL OR PAVEMENT REMOVAL (SEE SCHEDULES)		EXPANSION JOINT
	STRUCTURE REMOVAL		SAWED JOINT WITH NO DOWEL OR TIE BAR PLACEMENT
			TEMPORARY CONSTRUCTION EASEMENT
			PERMANENT DRAINAGE & UTILITY EASEMENT



**PLAN**

DATE	
BY	
CHECKED	
DATE	
NO.	

**PROFILE**

DATE	
BY	
CHECKED	
DATE	
NO.	

CADD FILE: A4650/FBPP54650.DGN  
 PLOTTED: 04/04/08