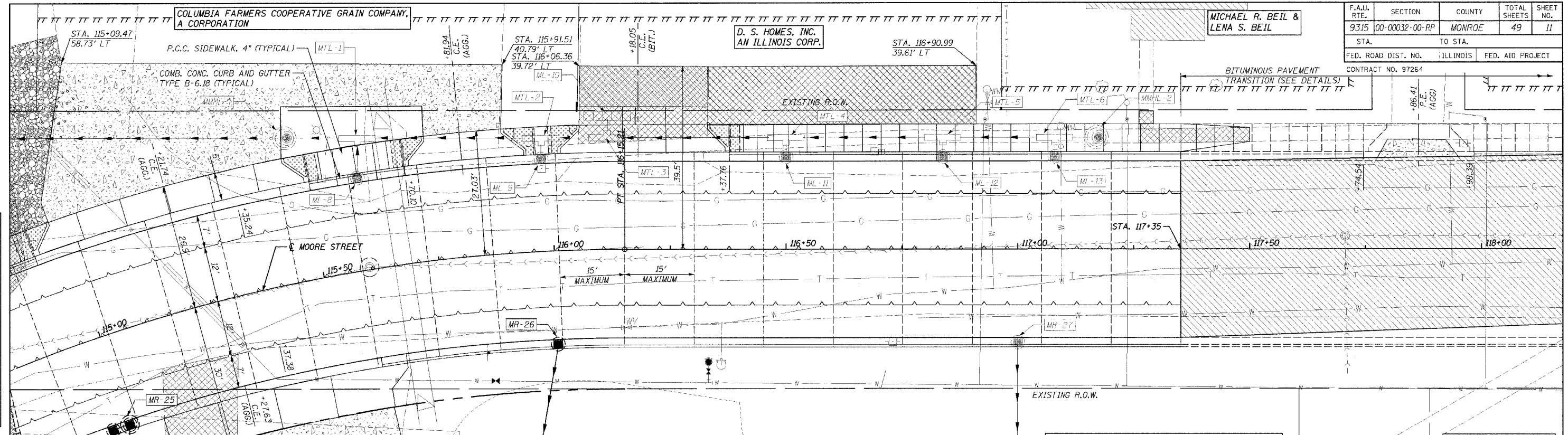
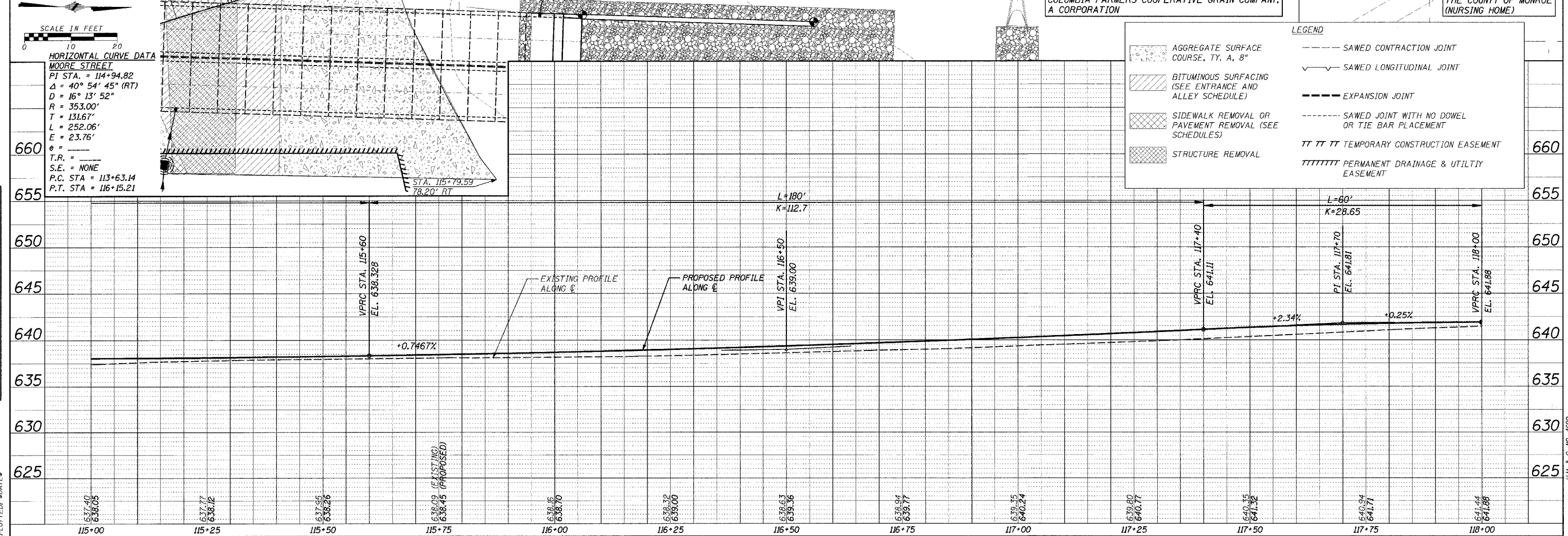


F.A.P. RTE.	SECTION	COUNTY	TOTAL SHEETS	SHEET NO.
9315	00-00032-00-RP	MONROE	49	11
STA. TO STA.		ILLINOIS		
FED. ROAD DIST. NO.		FED. AID PROJECT		
		CONTRACT NO. 97264		



LEGEND

	AGGREGATE SURFACE COURSE, TY. A, 8"		SAWED CONTRACTION JOINT
	BITUMINOUS SURFACING (SEE ENTRANCE AND ALLEY SCHEDULE)		SAWED LONGITUDINAL JOINT
	SIDEWALK REMOVAL OR PAVEMENT REMOVAL (SEE SCHEDULES)		EXPANSION JOINT
	STRUCTURE REMOVAL		SAWED JOINT WITH NO DOWEL OR TIE BAR PLACEMENT
			TEMPORARY CONSTRUCTION EASEMENT
			PERMANENT DRAINAGE & UTILITY EASEMENT



PLAN
 SURVEYED BY: []
 PLOTTED BY: []
 DATE: []

PROFILE
 SURVEYED BY: []
 PLOTTED BY: []
 DATE: []

CADD FILE: A4690\FBPF64650.Dwg
 PLOTTED: 8/24/18