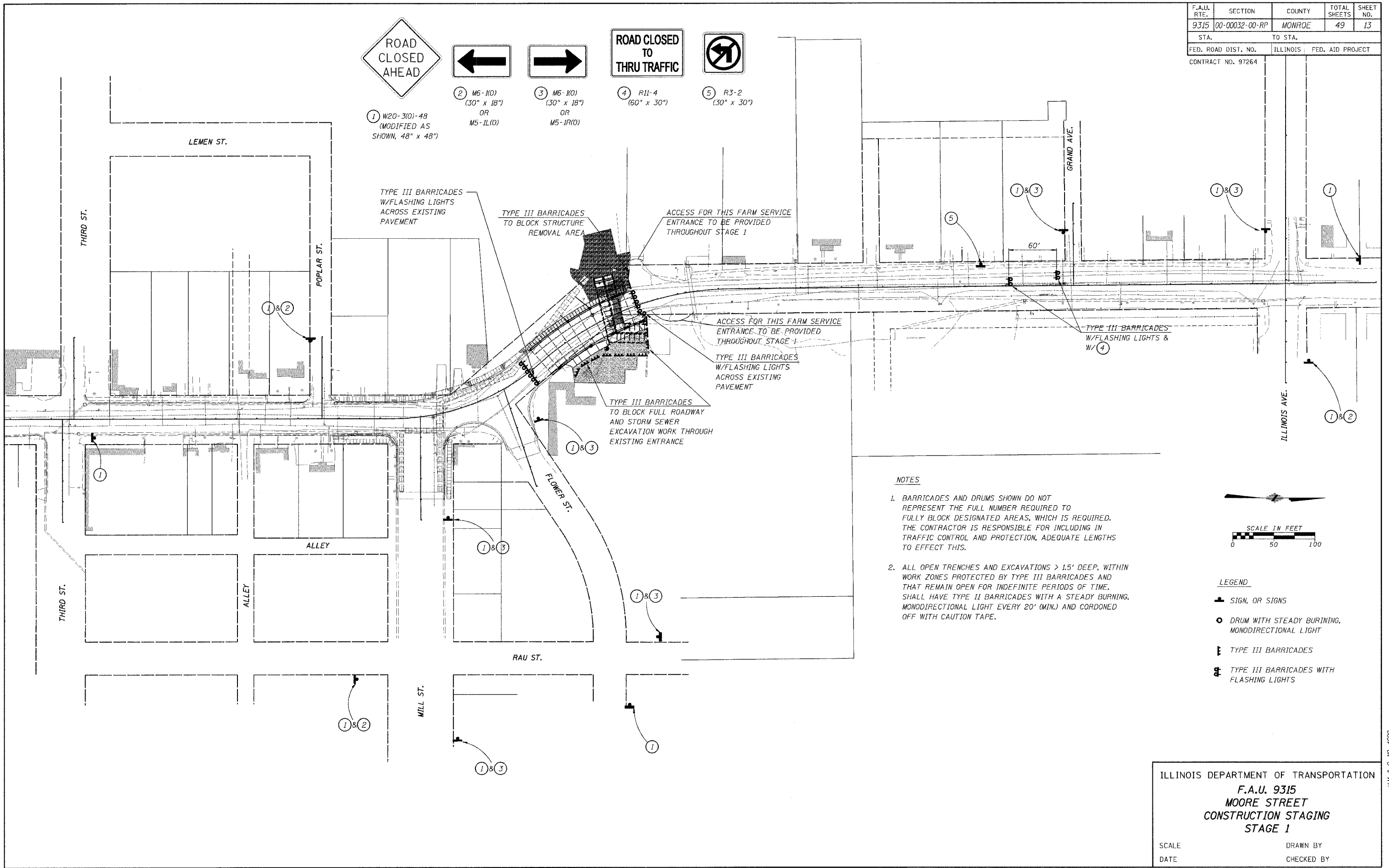
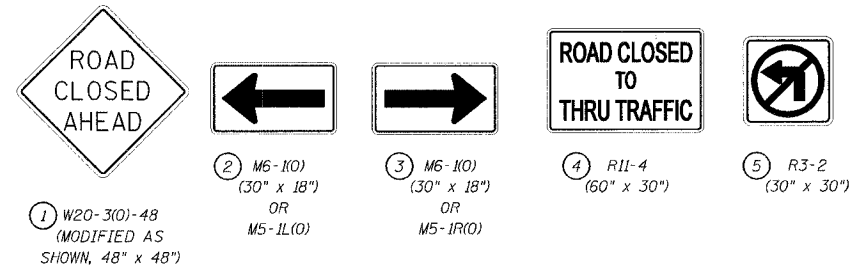


F.A.U. RTE.	SECTION	COUNTY	TOTAL SHEETS	SHEET NO.
9315	00-00032-00-RP	MONROE	49	13
STA.	TO STA.			
FED. ROAD DIST. NO.	ILLINOIS	FED. AID PROJECT		
CONTRACT NO. 97264				



NOTES

- BARRICADES AND DRUMS SHOWN DO NOT REPRESENT THE FULL NUMBER REQUIRED TO FULLY BLOCK DESIGNATED AREAS, WHICH IS REQUIRED. THE CONTRACTOR IS RESPONSIBLE FOR INCLUDING IN TRAFFIC CONTROL AND PROTECTION, ADEQUATE LENGTHS TO EFFECT THIS.
- ALL OPEN TRENCHES AND EXCAVATIONS > 1.5' DEEP, WITHIN WORK ZONES PROTECTED BY TYPE III BARRICADES AND THAT REMAIN OPEN FOR INDEFINITE PERIODS OF TIME, SHALL HAVE TYPE II BARRICADES WITH A STEADY BURNING, MONODIRECTIONAL LIGHT EVERY 20' (MIN.) AND CORDONED OFF WITH CAUTION TAPE.

LEGEND

- SIGN, OR SIGNS
- DRUM WITH STEADY BURNING, MONODIRECTIONAL LIGHT
- TYPE III BARRICADES
- TYPE III BARRICADES WITH FLASHING LIGHTS

ILLINOIS DEPARTMENT OF TRANSPORTATION
F.A.U. 9315
MOORE STREET
CONSTRUCTION STAGING
STAGE 1

SCALE _____ DRAWN BY _____
DATE _____ CHECKED BY _____

CADD FILE: 4690\F8910\4690.dgn
PLOTTED: 10/24/2005

H.M. & G. INC. 4690