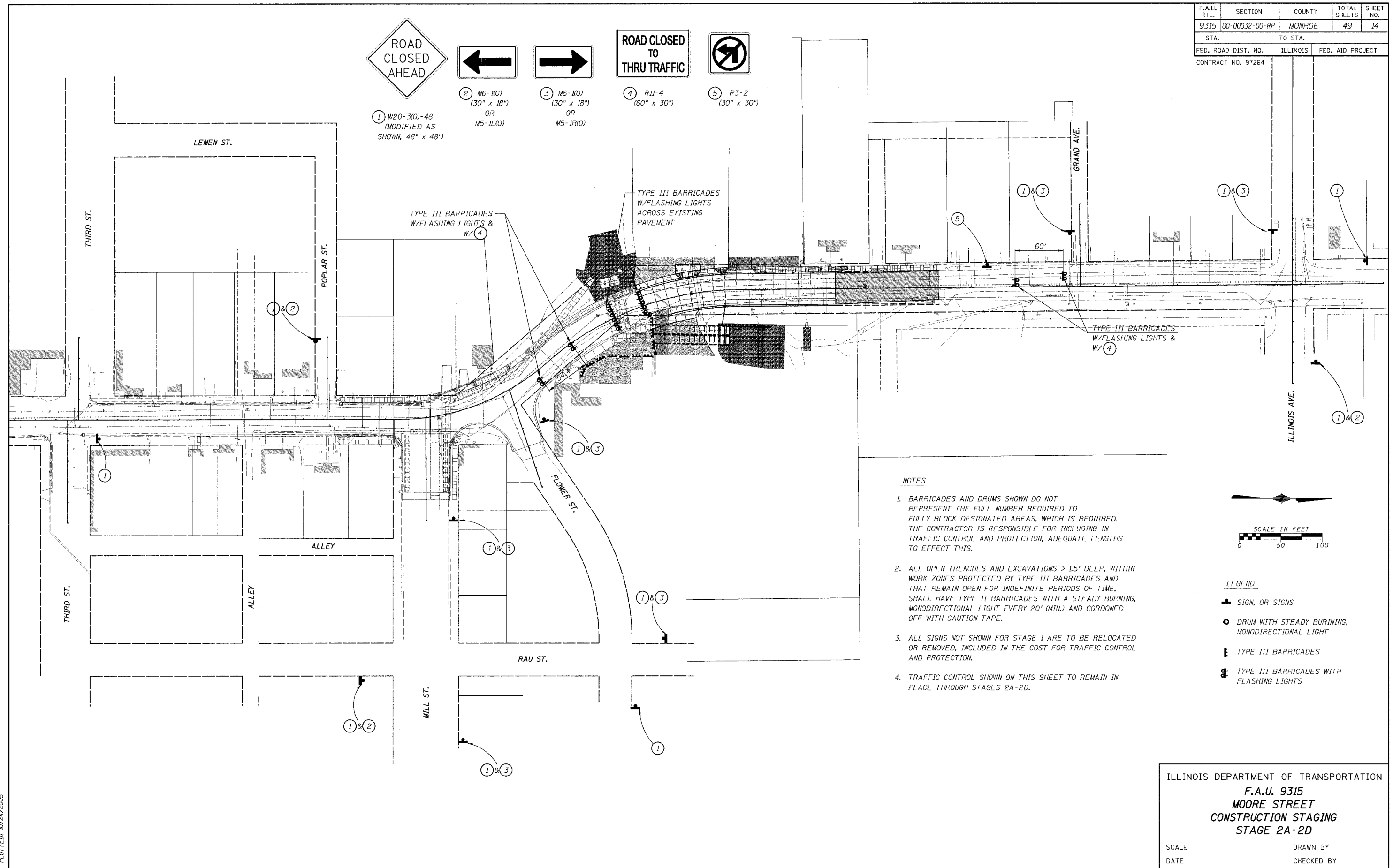
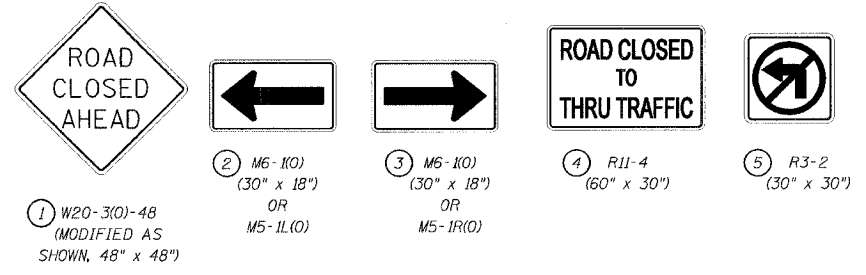


F.A.U. RTE.	SECTION	COUNTY	TOTAL SHEETS	SHEET NO.
9315	00-00032-00-RP	MONROE	49	14
STA.	TO STA.			
FED. ROAD DIST. NO.	ILLINOIS	FED. AID PROJECT		
CONTRACT NO. 97264				



**NOTES**

- BARRICADES AND DRUMS SHOWN DO NOT REPRESENT THE FULL NUMBER REQUIRED TO FULLY BLOCK DESIGNATED AREAS, WHICH IS REQUIRED. THE CONTRACTOR IS RESPONSIBLE FOR INCLUDING IN TRAFFIC CONTROL AND PROTECTION, ADEQUATE LENGTHS TO EFFECT THIS.
- ALL OPEN TRENCHES AND EXCAVATIONS > 1.5' DEEP, WITHIN WORK ZONES PROTECTED BY TYPE III BARRICADES AND THAT REMAIN OPEN FOR INDEFINITE PERIODS OF TIME, SHALL HAVE TYPE II BARRICADES WITH A STEADY BURNING, MONODIRECTIONAL LIGHT EVERY 20' (MIN.) AND CORDONED OFF WITH CAUTION TAPE.
- ALL SIGNS NOT SHOWN FOR STAGE 1 ARE TO BE RELOCATED OR REMOVED, INCLUDED IN THE COST FOR TRAFFIC CONTROL AND PROTECTION.
- TRAFFIC CONTROL SHOWN ON THIS SHEET TO REMAIN IN PLACE THROUGH STAGES 2A-2D.

**LEGEND**

- SIGN, OR SIGNS
- DRUM WITH STEADY BURNING, MONODIRECTIONAL LIGHT
- TYPE III BARRICADES
- TYPE III BARRICADES WITH FLASHING LIGHTS

ILLINOIS DEPARTMENT OF TRANSPORTATION  
**F.A.U. 9315**  
**MOORE STREET**  
**CONSTRUCTION STAGING**  
**STAGE 2A-2D**

SCALE \_\_\_\_\_ DRAWN BY \_\_\_\_\_  
DATE \_\_\_\_\_ CHECKED BY \_\_\_\_\_

CADD FILE: 4690/Fbar924690.dgn  
PLOTTED: 10/24/2005

H.M. & G. INC. 4690