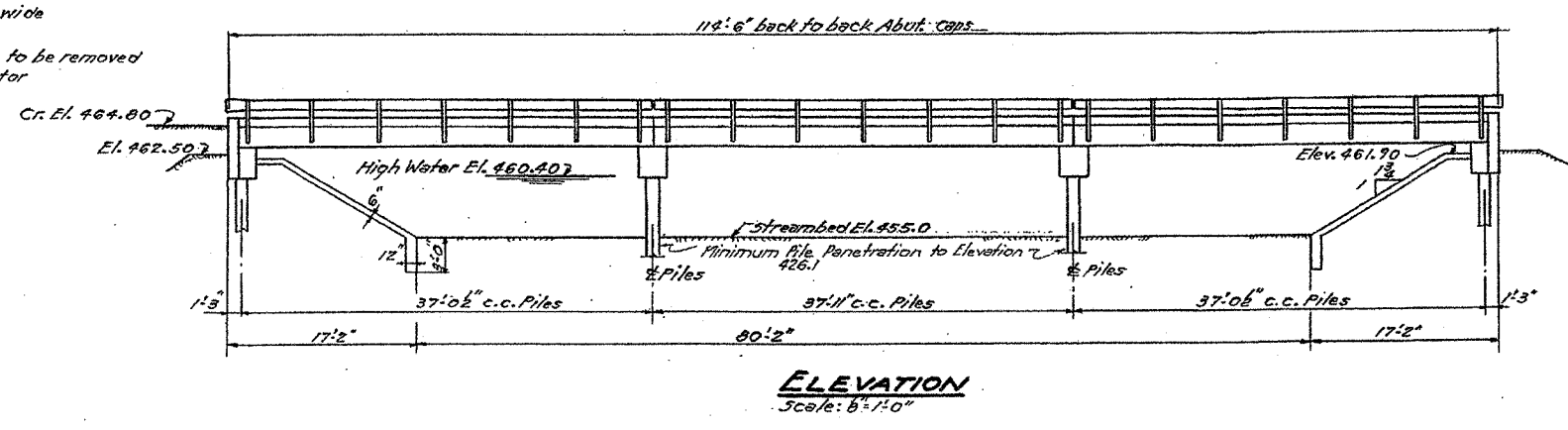


CONTRACT NO. 97272

ROUTE NO.	SEC.	COUNTY	TOTAL SHEETS	SHEET NO.
782	23G	CLINTON	27	25
PROJECT 5-82(G)				
ROUTE NO.	SEC.	COUNTY	TOTAL SHEETS	SHEET NO.
782	23G	CLINTON	27	25

D.M. 9 S.W. Headwall of bridge Rt Sta. 66+43 Elev. 461.26

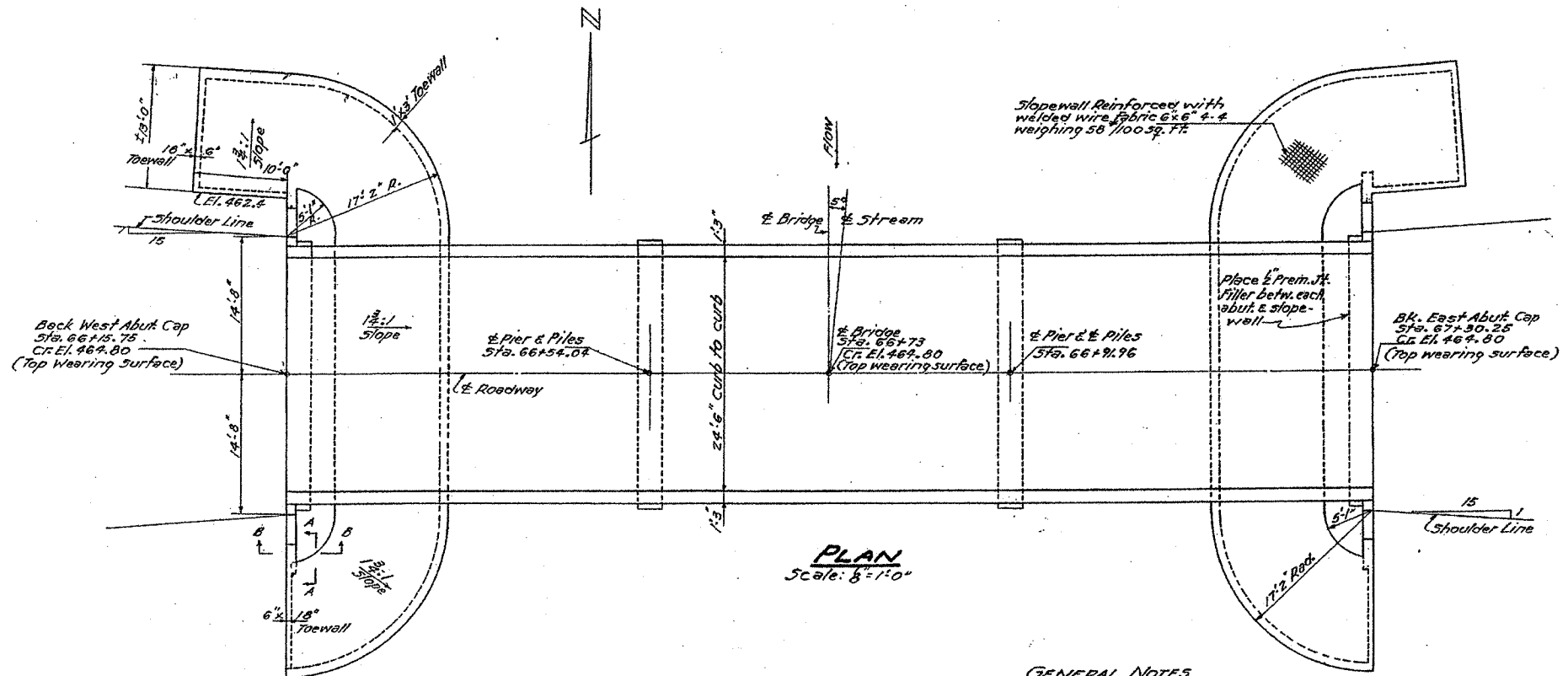
Existing Structure Data:
58' face to face of headwalls
4-35" W/12" @ 3'4" c.c.
4" Timber floor-14" wide
Timber Runways
Existing structure to be removed
by Bridge Contractor



ELEVATION
Scale: 8"=1'-0"

BORING DATA

Elev.	Sta. 65+00 12' N. of E. Rowy.	Sta. 66+20 12' N. of E. Rowy.	Sta. 66+25 12' S. of E. Rowy.	Sta. 67+30 12' N. of E. Rowy.	Sta. 67+30 12' S. of E. Rowy.	Sta. 69+00 12' N. of E. Rowy.	Elev.
465	Gravel Fill	Gravel Fill	Fill	Fill	Fill	Fill	465
460	Red sandy clay	Gray mottled red silty clay	Gray mottled red silty clay	Gray red silty clay	Gray red silty clay	Gray red silty clay	460
455	Gray mottled red silty clay same fine sand	Red sand	Red sand	Red sand	Red sand	Red sand	455
450	Unstable samples not recognizable. Appr. to the clayey sand	Gray clayey red sand	Sandy gravel	Silty sand	Silty sand	Sandy gravel	450
445		Red sand	Red sand	Red sand	Red sand	Red sand	445
440		Gray sandy clay	Gray clayey red sand	Silty sand	Silty sand	Sandy gravel	440
435		Sand	Sandy gravel	Silty sand	Silty sand	Sandy gravel	435
430	Limit of boring Exp.						430



PLAN
Scale: 8"=1'-0"

STA. 66+73
FLAT BRANCH CREEK
BUILT 195
F.A.S. RT. 782 - SEC. 23 G.
P.A. PROJECT 5-82(G)
LOADING H15-512

NAME PLATE DETAIL

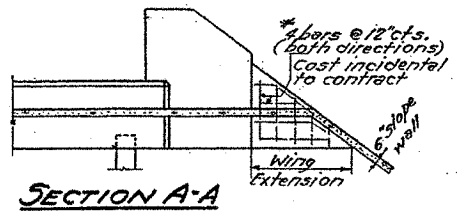
See Standard 2113 for details.
Locate on bridge rail between first two posts on S.W. corner of bridge. Drill 1/2" holes in rail to match holes in Name Plate for 3" bolts.

WATERWAY INFORMATION

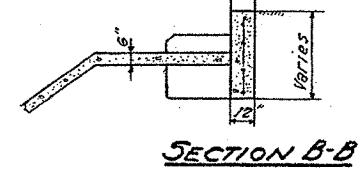
Drainage Area 7500 Acres
Character: Level mostly Cultivated
Present Opening 207 Sq. Ft.
Reg'd Opening 450 Sq. Ft.
Proposed Opening 450 Sq. Ft.
Perpendicular to Stream

GENERAL NOTES

For item "Precast Prestressed Concrete Bridge Deck" see Special Provisions.
The Contractor shall drive two test piles in a permanent location as directed by the Engineer before casting the remainder of piles.
Layout of slope walls may be varied as necessary to conform to ground surface after embankment has been constructed as directed by the Engineer.
Excavation for slope wall will not be paid for separately but is considered incidental to cost of slope wall.
Class-X Concrete shall be used throughout except as noted.



SECTION A-A



SECTION B-B

Note: All slope wall dimensions are horizontal projections.

TOTAL BILL OF MATERIAL

ITEM	SUPER.	SUB.	TOTAL
Precast Prestressed Conc. Bridge Deck	Sq. Ft.	3065	3065
Metal Plate Bridge Rail	Lin. Ft.	222.7	222.7
Name Plates	Each		1
Class-X Concrete	Cu. Yds.	10.0	31.8
Reinforcement Bars	Lbs.	310	3440
12" Precast Concrete Piles (34' long)	Lin. Ft.		306
14" Precast Concrete Piles (35' long)	Lin. Ft.		385
Test Piles (12")	Each		1
Test Piles (14")	Each		1
Slope Wall	Sq. Yds.		320
Removal of Existing Structures	Each		1
Channel Excavation	Cu. Yds.		560

STRESSES
1c - 1400 lb. Curbs
1c - 800 lb. Substructure
1c - 2000 lb. Beams
1s - 20000 lb. Reinf. Bars
1su - 160000 lb. Prestr. Steel

PROJECT 5-82(G)
F.A. ROUTE 782-SEC. 23 G.
CLINTON COUNTY
STATION 66+73

Loading H15-512-44

FOR INFORMATION ONLY