

Clients\SAUGET\7313-05-1 Monsanto Ave. Road Imp\dwg\01-cov_monst_of_dwg_01 cover, 4/11/2006 10:21:02 AM, ipg, \PHW100\Xerox Wide Format Print System 8825, Arch D (24x36"), 1,2

INDEX OF SHEETS

SHEET NO	TITLE
1	COVER SHEET
2	TYPICAL PAVEMENT SECTIONS
3	SUMMARY OF QUANTITIES, GENERAL NOTES, ETC.
4-9	PLAN SHEETS
10-15	PAVEMENT MARKING PLANS

LIST OF STANDARDS

000001-04	STANDARD SYMBOLS, ABBREVIATIONS AND PATTERNS
606001-02	CONCRETE CURB TYPE B AND COMBINATION CONCRETE CURB AND GUTTER
701011-01	OFF-RD MOVING OPERATIONS, 2L, 2W, DAY ONLY
701311-02	LANE CLOSURE 2L, 2W MOVING OPERATIONS-DAY ONLY
701501-03	URBAN LANE CLOSURE, 2L, 2W, UNDIVIDED
702001-06	TRAFFIC CONTROL DEVICES
780001-01	TYPICAL PAVEMENT MARKINGS

UTILITY OWNERS:

Electric:
 Joe Robertson
 District Engineer
 Ameren Ue IL
 500 East Broadway
 East St. Louis, IL 62202
 (618) 482-2238

Gas:
 Kelly Bauza
 Ameren IP (Gas)
 1050 West Boulevard
 PO Box 428
 Belleville, IL 62221
 (618) 236-4309

Water:
 Commonfields of Cahokia Public
 Water District
 Dennis Traiteur
 2525 Mousette
 Cahokia, IL 62206
 (618) 337-3302

J.U.L.I.E.: 1-800-892-0123

Telephone:
 Cathy Miller
 Design Engineer
 SBC
 203 Goethe
 Collinsville, IL 62234
 (618) 346-7268

Sanitary Sewers
 Mike Williams
 Public Works Director
 Village of Sauget
 2897 Falling Springs Rd.
 Sauget, IL 62206
 (618) 337-4683

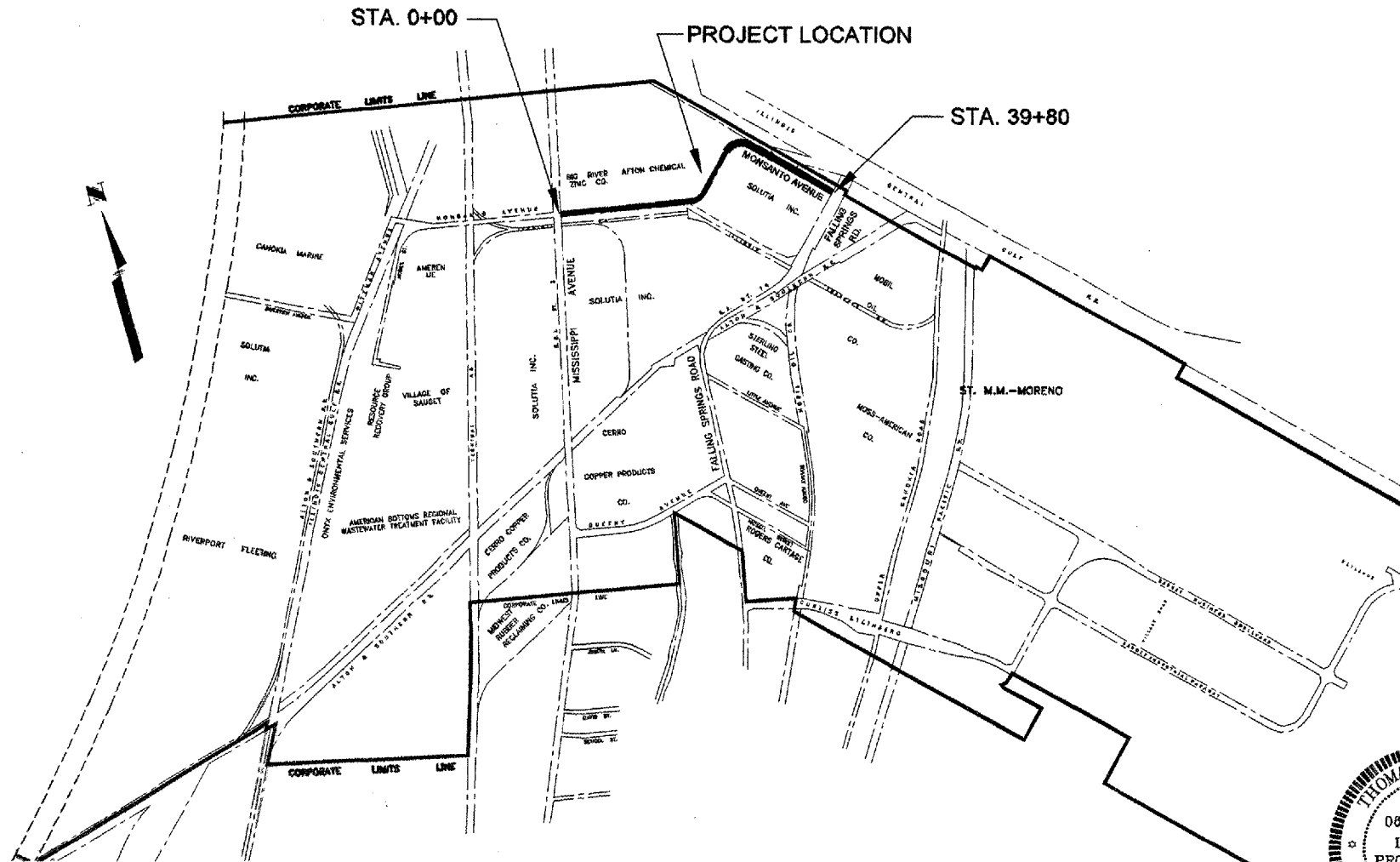
SCALE IN FEET:
 PLAN - 1 INCH = 50 FEET

DESIGN DESIGNATION--URBAN COLLECTOR
 Design Traffic = 2,000 ADT
 Design Speed = 35 MPH

CONTRACT NO. 97273

STATE OF ILLINOIS
 DEPARTMENT OF TRANSPORTATION
 DIVISION OF HIGHWAYS
**PLANS FOR PROPOSED
 FEDERAL AID PROJECT FAU 9194
 (MONSANTO AVE.) OVERLAY**

VILLAGE OF SAUGET
 SECTION 05-00011-00-RS
 PROJECT NO. M-5011(202)
 JOB NO. C-98-325-06
 ST. CLAIR COUNTY, ILLINOIS

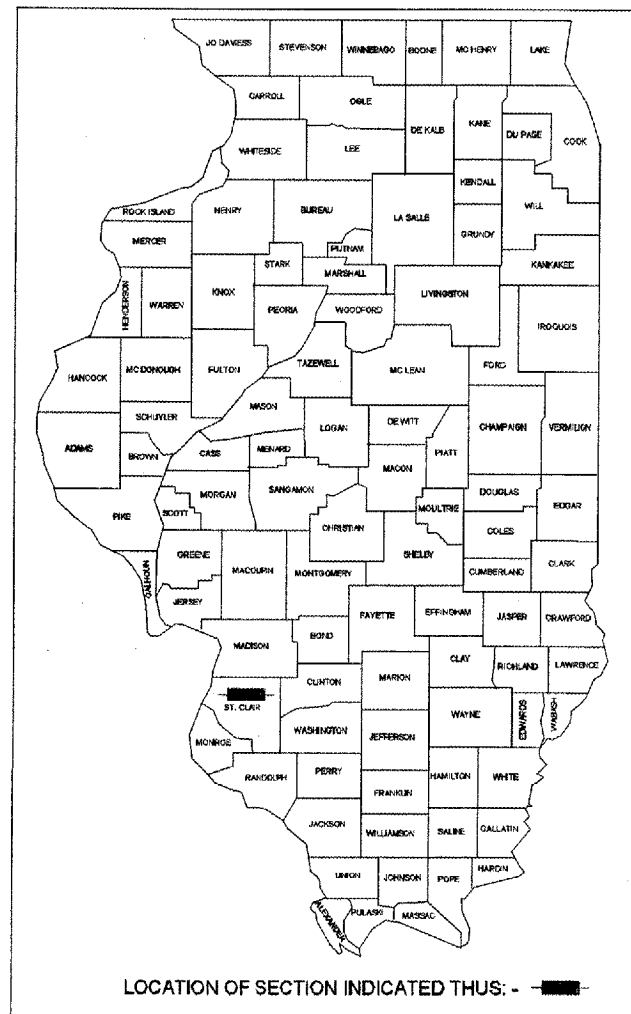


LOCATION MAP
 SCALE: NOT TO SCALE

NET LENGTH = 3,980 FEET = 0.754 MILES

ROUTE NO.	SECTION	COUNTY	TOTAL SHEETS	SHEET NO.
	05-00011-00-RS	ST. CLAIR	15	1
FED. ROAD DIST. NO. 8		ILLINOIS	FED. AID PROJECT-	

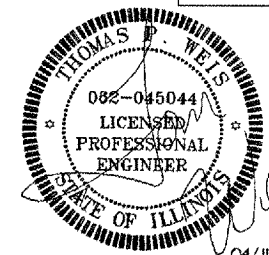
COVER SHEET
 CONTRACT NO. 97273



APPROVED _____ April 11 20 06
 VILLAGE OF SAUGET - MAYOR RICHARD SAUGET JR

PASSED _____ April 14 20 06
 Jennifer Obertino
 DISTRICT ENGINEER OF LOCAL ROADS & STREETS

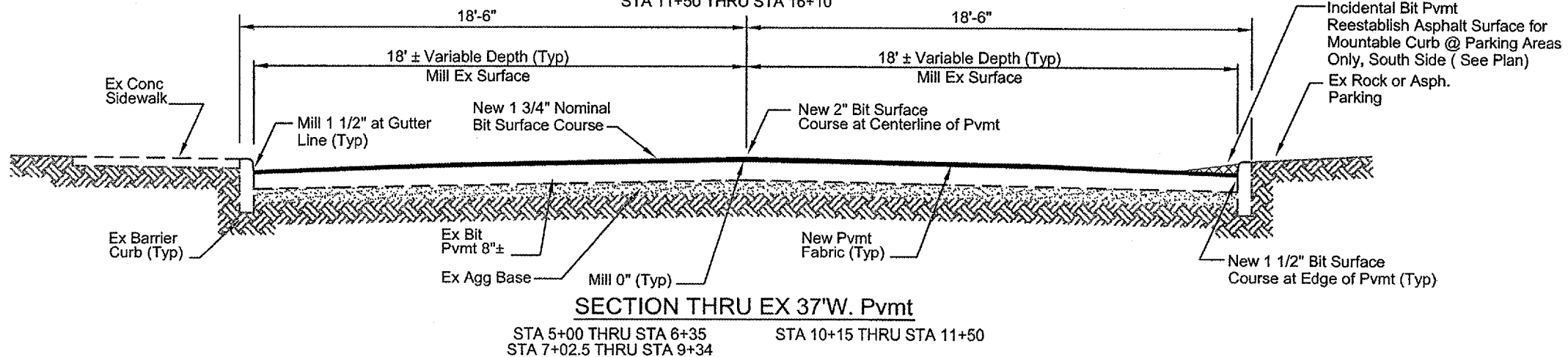
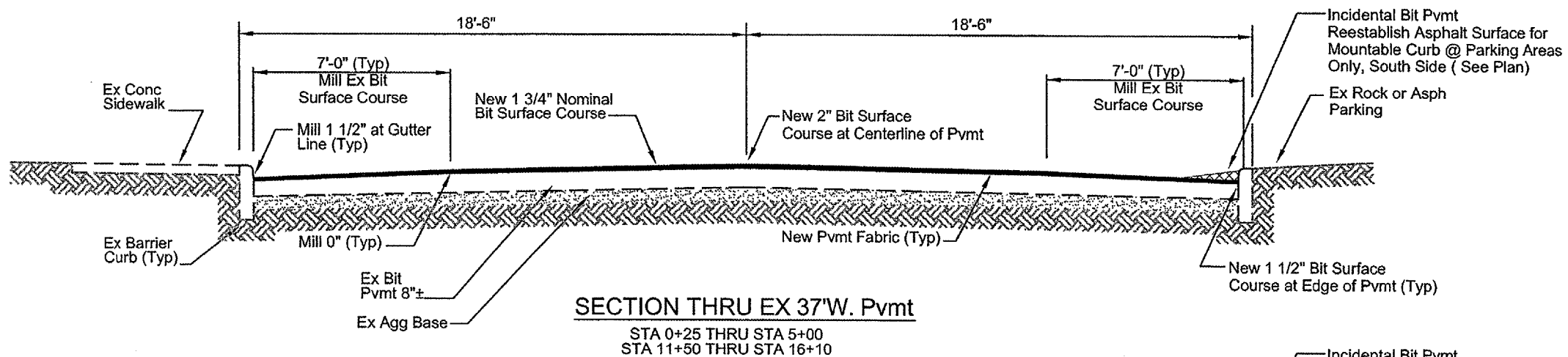
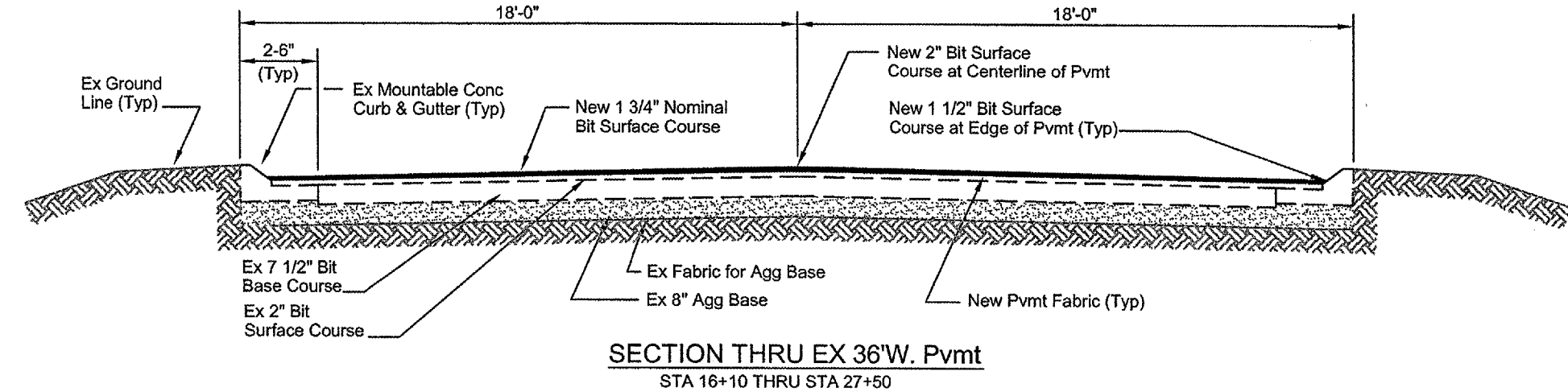
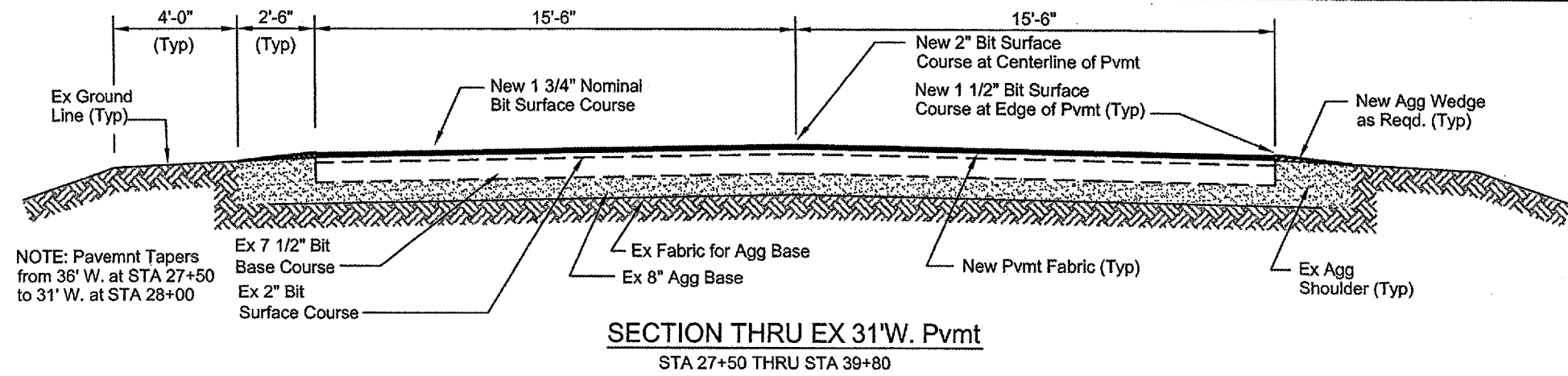
APPROVED _____ 4-14- 20 06
 Makenzie C. Lammie
 DEPUTY DIRECTOR OF HIGHWAYS
 REGION FIVE ENGINEER
 STATE OF ILLINOIS
 DEPARTMENT OF TRANSPORTATION



Weis Design Group
 16296 Westwoods Business Park Dr.
 Ellisville, Mo. 63021
 phwa@phweis.com
 (636) 207-0832
 (618) 874-0320
 f. (636) 207-0328

EXPIRATION 11-30-07

ROUTE NO.	SECTION	COUNTY	TOTAL SHEETS	SHEET NO.
	05-00011-00-RS	ST. CLAIR	15	2
FED. ROAD DIST. NO. 8		ILLINOIS	FED. AID PROJECT-	
TYPICAL PvmT SECTIONS				
CONTRACT NO. 97273				



F:\Clients\SAUGET\7313-05-1 Monsanto Ave. Road Imp\dwg\Details.dwg, Detail Sht. 1, 4/11/2006 11:13:29 AM, .jpg, \PHW100\KM-3035, Ledger, 1-1

ROUTE NO.	SECTION	COUNTY	TOTAL SHEETS	SHEET NO.
	05-00011-00-RS	ST. CLAIR	15	3
FED. ROAD DIST. NO. 6		ILLINOIS	FED. AID PROJECT	
TYPICAL PAVT SECTIONS				
CONTRACT NO. 97273				

GENERAL NOTES :

1. Contractor shall contact the Joint Utility Locating Information for Excavators (JULIE) at 1-800-892-0123 for locating various utilities during construction.
2. Contractor to provide all traffic control devices (barricades, warning lights, signage, etc.) in accordance with Illinois Manual of Uniform Traffic Control Devices for Streets and Highways.
3. Contractor to maintain one (1) lane of traffic open at all times.
4. Contractor to keep all adjacent Pvmts clean and free of mud, rock and debris at all times during construction.
5. Contractor to remove waste materials, included excavated materials, trash and debris and dispose of it off of Owners property.
6. Contractor to coordinate with Afton Chemical during paving operations to avoid conflicts at railroad spur crossings. Contractor is to cease operation during times of spur activity and to maintain 200' no construction zones at these times. The times of spur activity are from 4:00 pm to 7:00 pm. The contractor is to cease activity by 3:45 pm in this area.

MIXTURE REQUIREMENTS - SUPERPAVE PROJECT

ROUTE	FAU9194
SECTION	05-00011-00-RS
COUNTY	St. Clair
CONTRACT	97273

DESCRIPTION:	Sauget Monsanto Ave.
--------------	----------------------

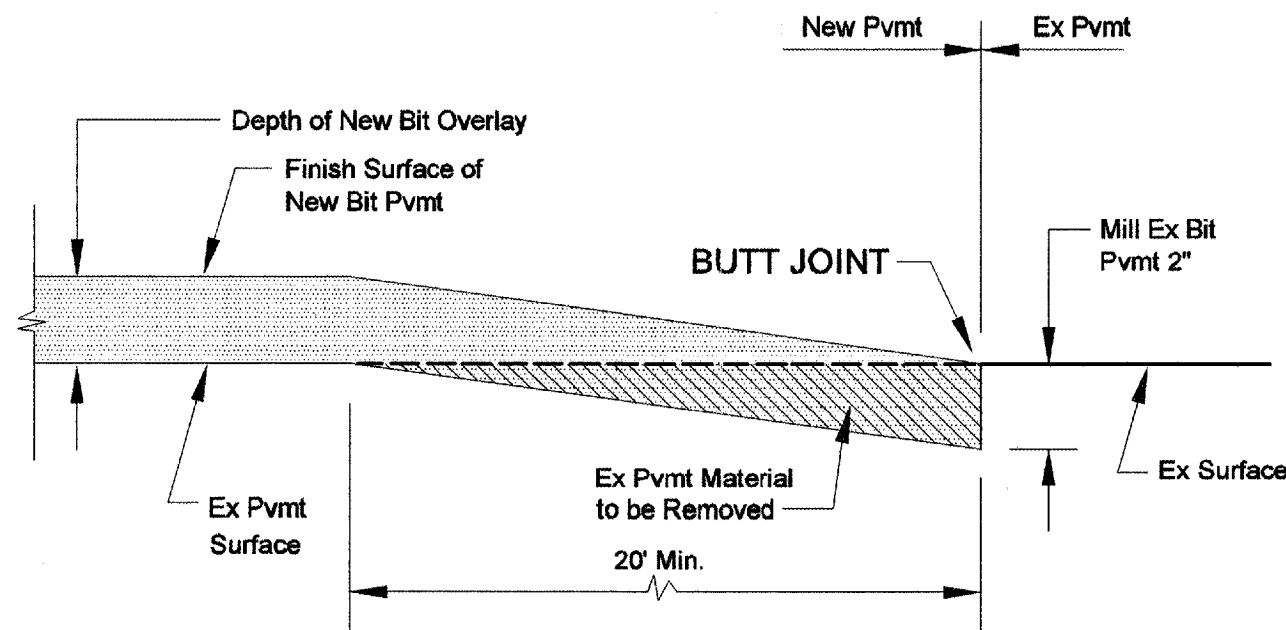
ADT (Construction Year):	2000
MU%:	15
SU%:	10
20 YR. ESAL'S:	1.86

MIXTURE USE	SURFACE	LEVEL BINDER	INCIDENTAL SURF
AC/PG	PG 64-22	PG 64-22	PG 64-22
RAP % (MAX)	10%	10%	10%
DESIGN AIR VOIDS	4.0% @ Ndes=70	4.0% @ Ndes=70	4.0% @ Ndes=70
MIX COMPOSITION (GRADATION MIXTURE)			
FRICTION AGG	MIXTURE "D"	MIXTURE "C"	MIXTURE "C"

Plan quantities for Bit Concrete Surface Course items are calculated using a unit weight of 112 lb/sq yd/in (59.8 kg/sq m/25 mm thickness).

SUMMARY OF QUANTITIES			
CODE NO.	ITEM	UNIT	TOTAL
40600980	Bituminous Surface Removal - Butt Joint	SQ YD	555
40800040	Incidental Bituminous Surfacing	TON	25
44000030	Bituminous Surface Removal (Variable Depth)	SQ YD	3,750
44000300	Curb Removal	FOOT	38
44000500	Combination Curb and Gutter Removal	FOOT	12
44300300	Area Reflective Crack Control Treatment, System A	SQ YD	15,660
48101200	Aggregate Shoulders, Type B	TON	72
60300350	Manhole Frames To Be Adjusted	EACH	9
60300405	Valve Box Frames To Be Adjusted	EACH	9
60600105	Concrete Curb	FOOT	38
60610500	Combination Concrete Curb & Gutter, Type M-6.24 (Abut. Ex. Pave.)	FOOT	12
67100100	Mobilization	L SUM	1
70102620	Traffic Control & Protection, Standard 701501	L SUM	1
* 78000100	Thermoplastic Pavement Marking, Letters and Symbols	SQ FT	276
* 78000200	Thermoplastic Pavement Marking Line 4"	FOOT	8438
* 78000600	Thermoplastic Pavement Marking Line 12"	FOOT	203
* 78000650	Thermoplastic Pavement Marking Line 24"	FOOT	105
X4066426	Bituminous Conc Surface Course, Superpave, Mix "D", N70	TON	1550

* SPECIALTY ITEMS



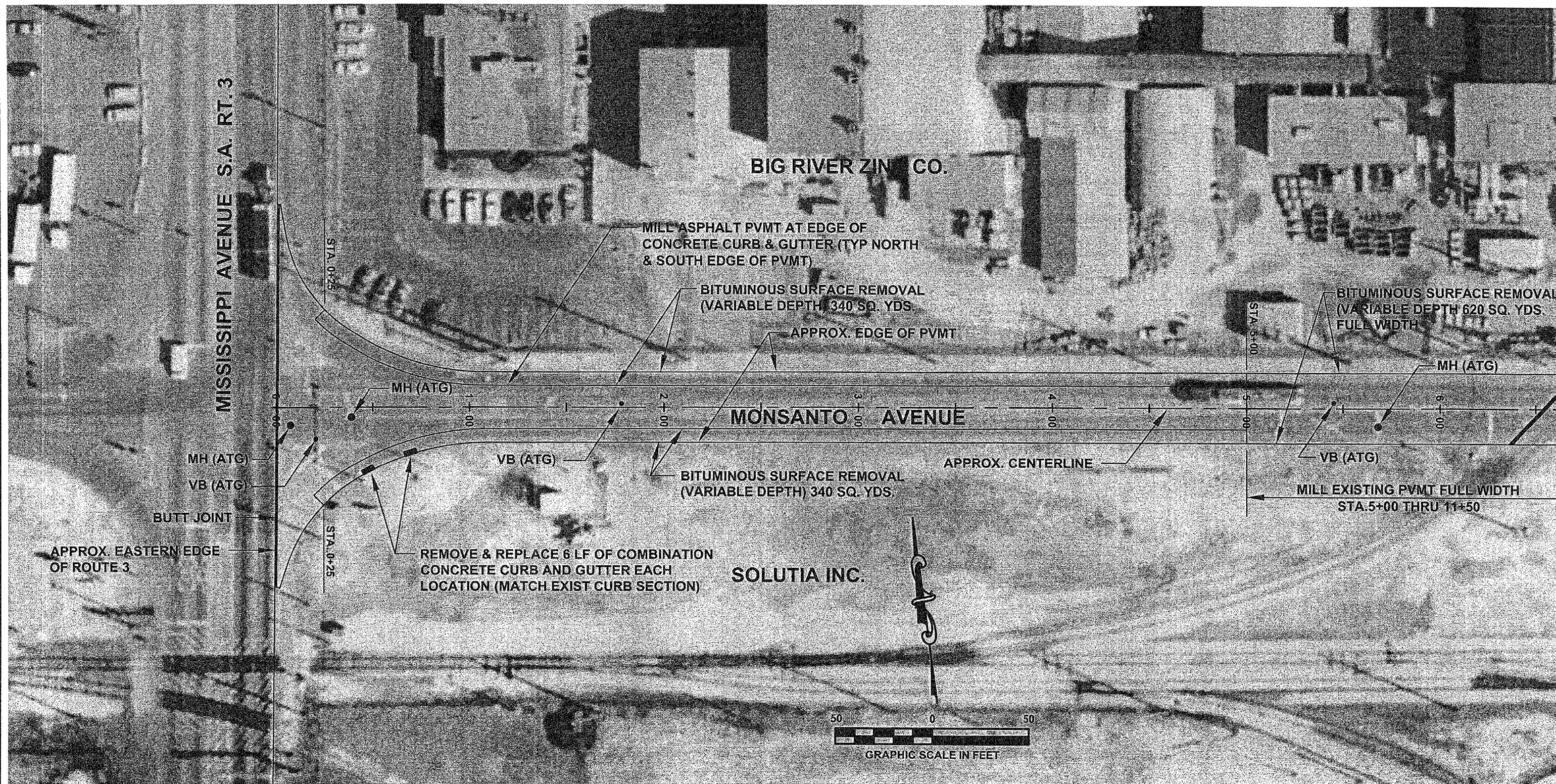
TYP BUTT JOINT

STA 0+00 THRU STA 0+25
 STA 6+35 THRU STA 6+55
 STA 6+82.5 THRU STA 7+02.5

STA 9+34 THRU STA 9+34
 STA 9+95 THRU STA 10+15

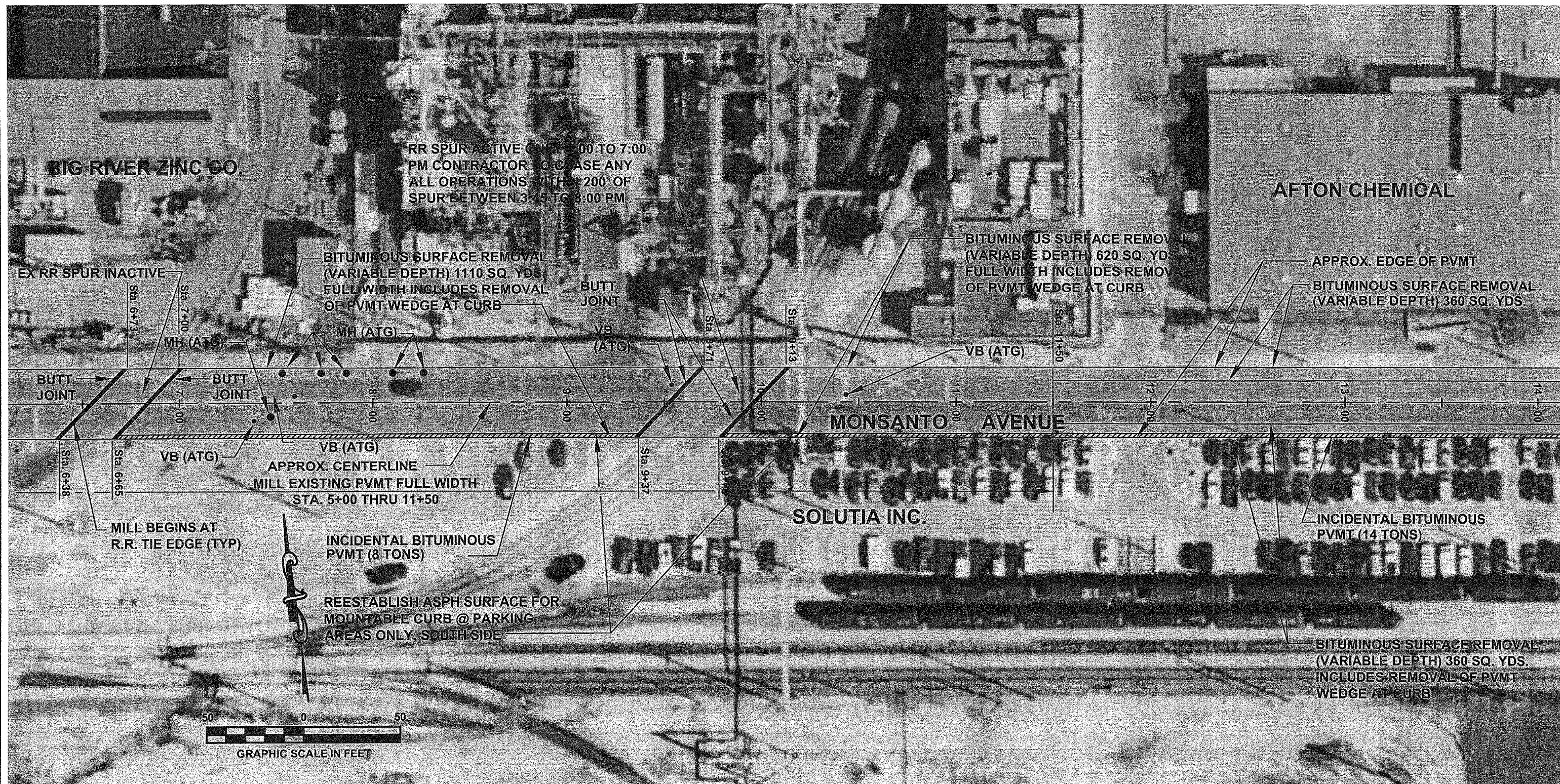
ROUTE NO.	SECTION	COUNTY	TOTAL SHEETS	SHEET NO.
-	05-00011-00-RS	ST. CLAIR	15	4
FED. ROAD DIST. NO. 2		ILLINOIS	FED. AID PROJECT:	
PLAN SHEET				

CONTRACT NO. 97273



ROUTE NO.	SECTION	COUNTY	TOTAL SHEETS	SHEET NO.
-	05-00011-00-RS	ST. CLAIR	15	6
FED. ROAD DIST. NO. 8		ILLINOIS	FED. AID PROJECT.	
PLAN SHEET				

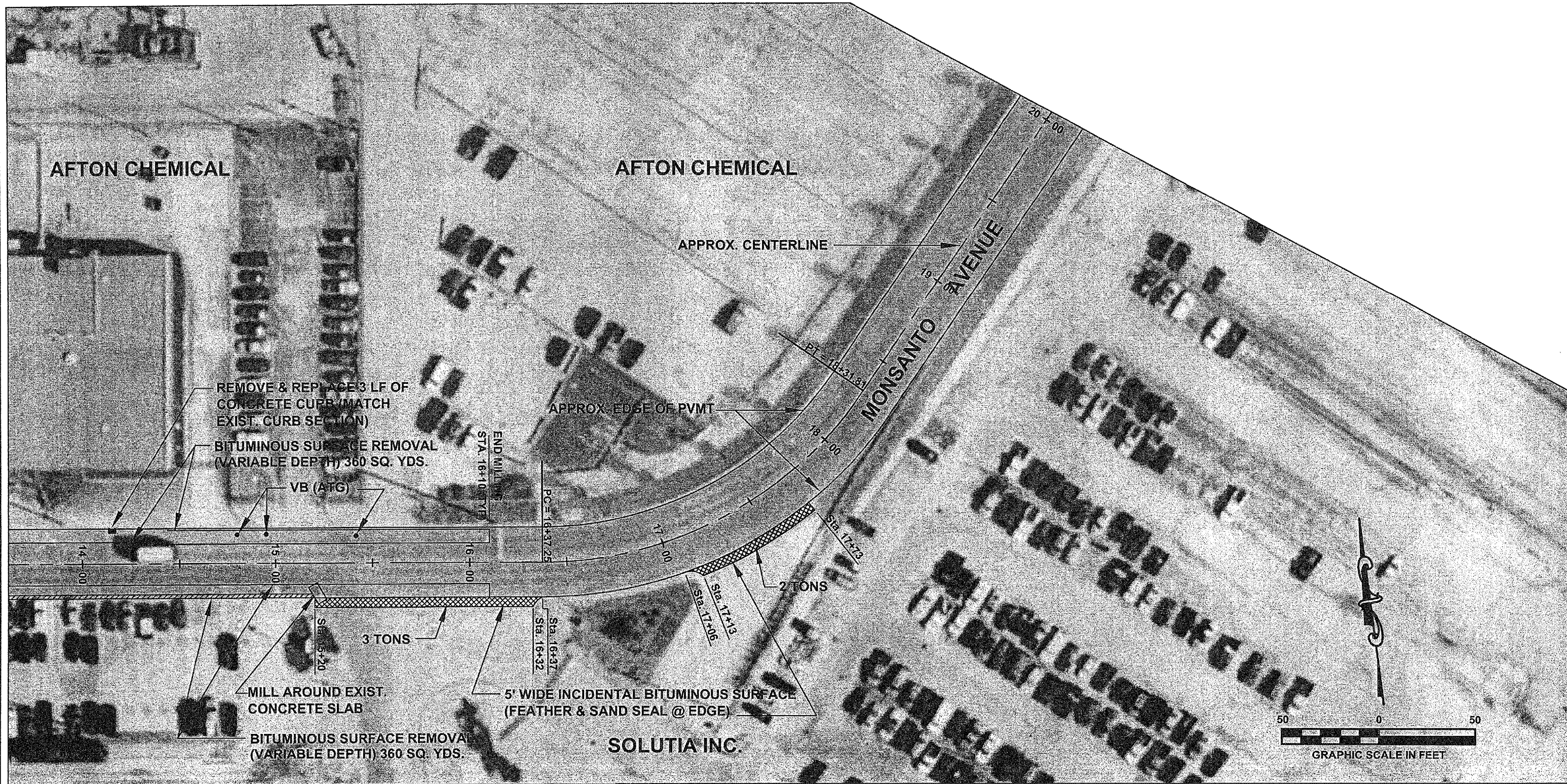
CONTRACT NO. 97273



\\Clients\SAUGET\713-05-1 Monsanto Ave. Road Imp\dwg\Aerial Composite.dwg, Plan Sht. 2, 4/11/2006 11:30:50 AM, .jpg, \PHW100KM-3035, Ledger, 1:1

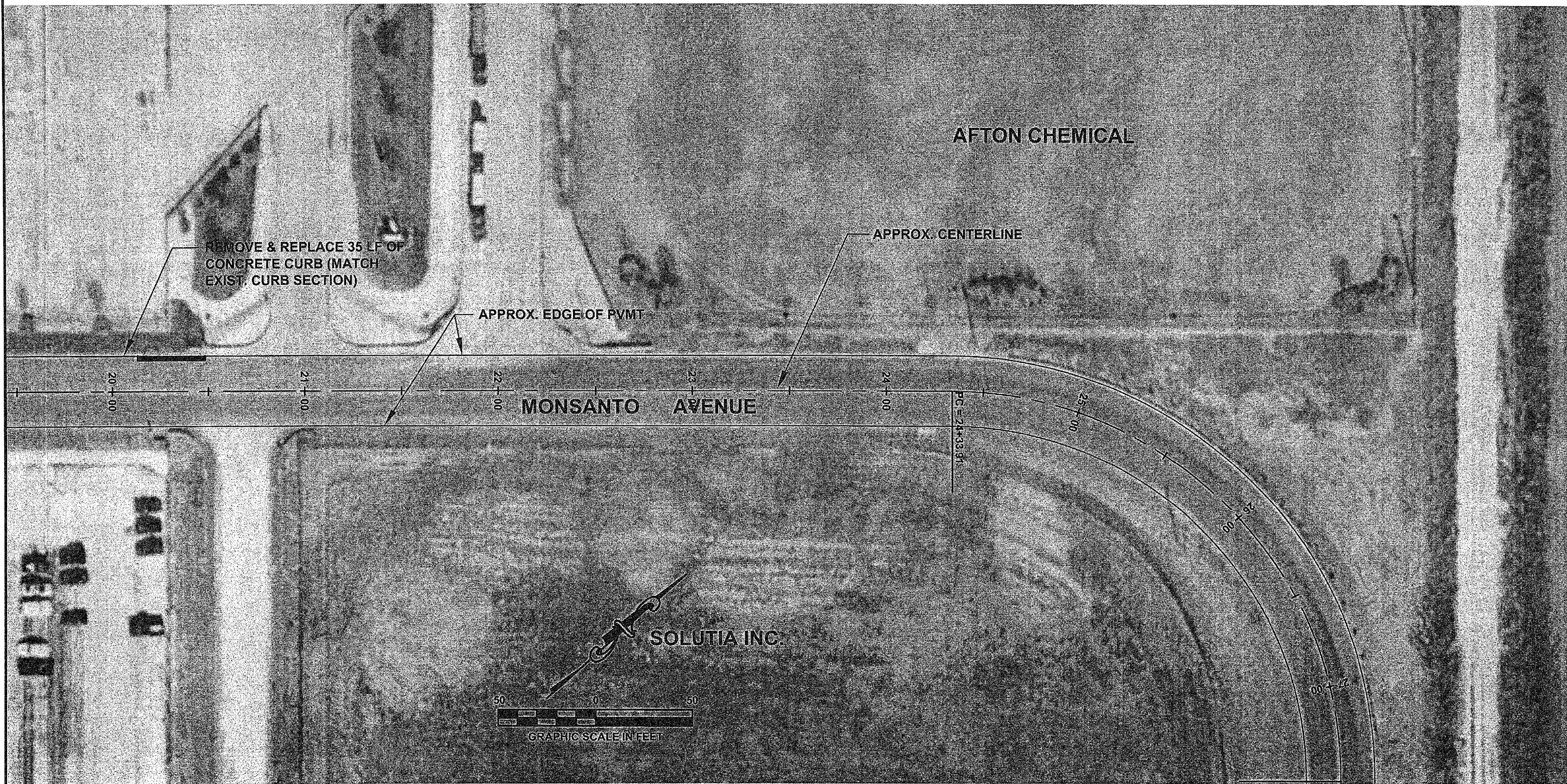
ROUTE NO.	SECTION	COUNTY	TOTAL SHEETS	SHEET NO.
-	05-00011-00-RS	ST. CLAIR	15	6
FED. ROAD DIST. NO. 8		ILLINOIS	FED. AID PROJECT-	
PLAN SHEET				

CONTRACT NO. 97273



ROUTE NO.	SECTION	COUNTY	TOTAL SHEETS	SHEET NO.
-	05-00011 -00-RS	ST. CLAIR	15	7
FED. ROAD DIST. NO. 8		ILLINOIS	FED. AID PROJECT-	
PLAN SHEET				

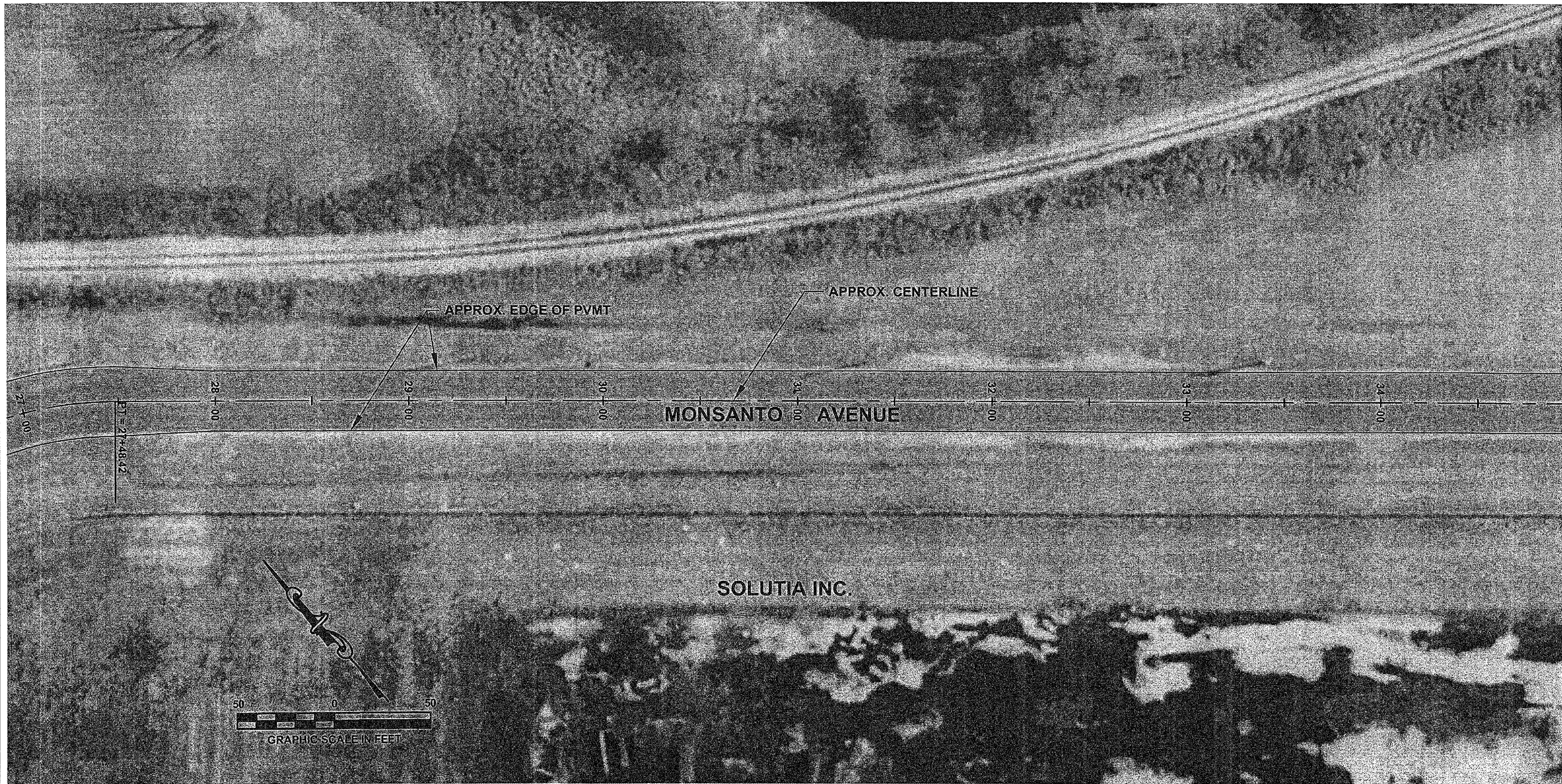
CONTRACT NO. 97273



:Clients\SAUGET\713-05-1 Monsanto Ave. Road Imp\dwg\Aerial Composite.dwg, Plan Sht. 4, 4/11/2006 11:38:26 AM, .jpg, \PHW100\KM-3035, Ledger, 1:1

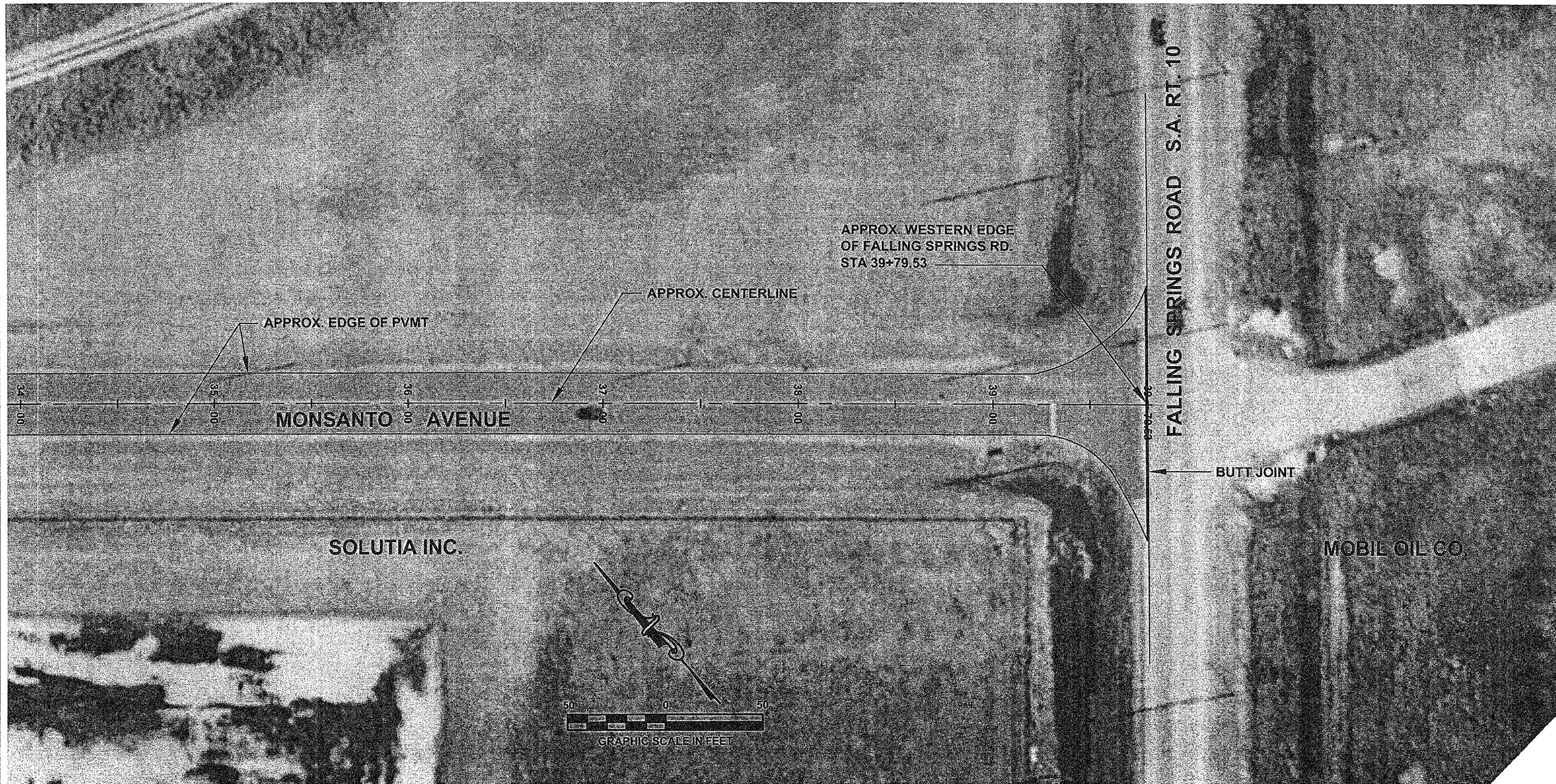
ROUTE NO.	SECTION	COUNTY	TOTAL SHEETS	SHEET NO.
-	05-00011-00-RS	ST. CLAIR	15	8
FED. ROAD DIST. NO. 8		ILLINOIS	FED. AID PROJECT-	
PLAN SHEET				

CONTRACT NO. 97273



ROUTE NO.	SECTION	COUNTY	TOTAL SHEETS	SHEET NO.
-	05-00011 -00-RS	ST. CLAIR	15	9
FED. ROAD DIST. NO. 8		ILLINOIS	FED. AID PROJECT-	
PLAN SHEET				

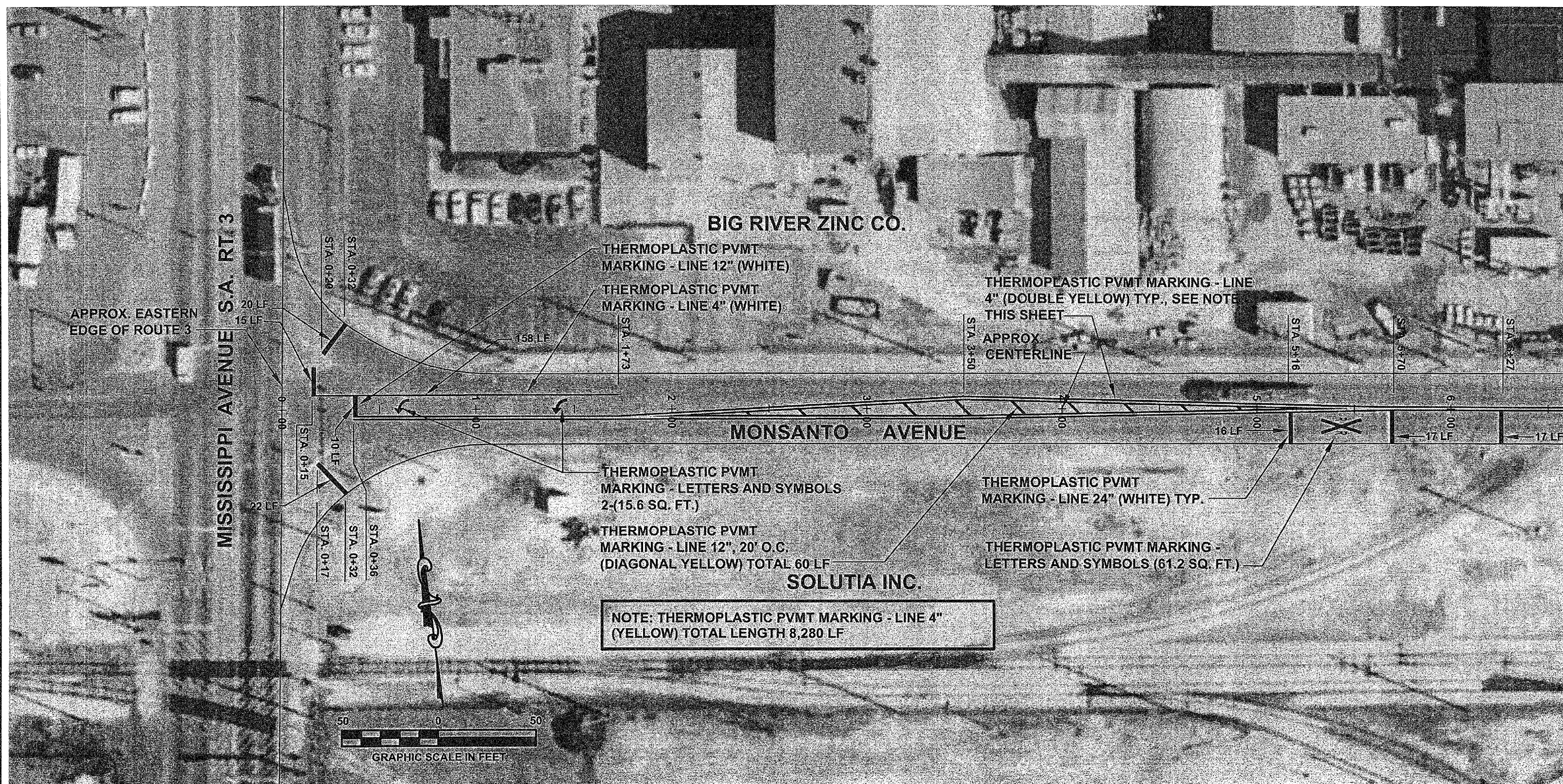
CONTRACT NO. 97273



F:\Clients\SAUGET\7313-05-1 Monsanto Ave. Road Imp\dwg\Aerial Composite.dwg, Plan Sht. 6, 4/11/2006 11:39:04 AM, jpg, NPHW100\KM-3035, Ledger, 1:1

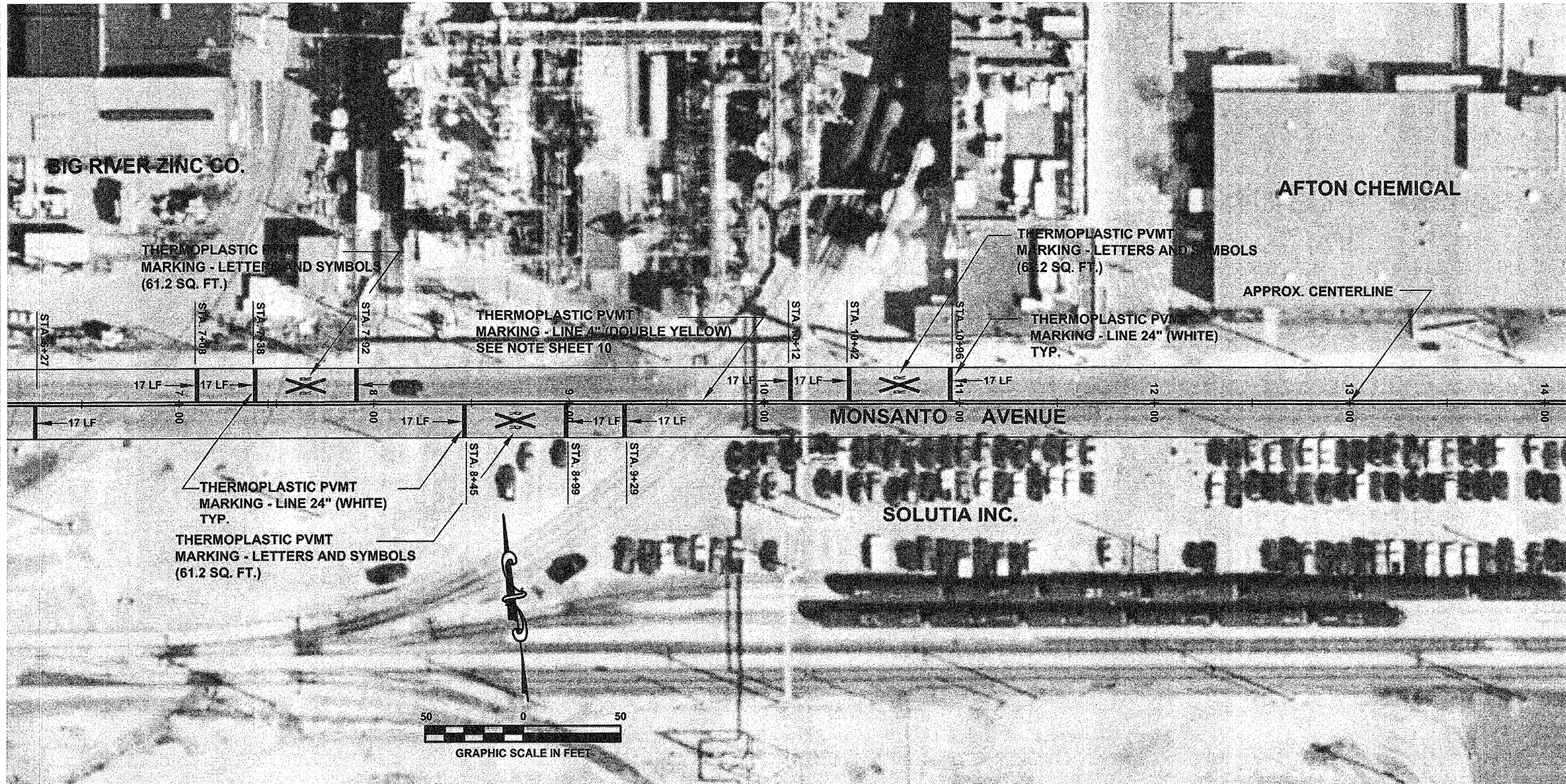
ROUTE NO.	SECTION	COUNTY	TOTAL SHEETS	SHEET NO.
-	05-00011-00-RS	ST. CLAIR	15	10
FED. ROAD DIST. NO. 8		ILLINOIS	FED. AID PROJECT:	
PVTM MARKING				

CONTRACT NO. 97273



ROUTE NO.	SECTION	COUNTY	TOTAL SHEETS	SHEET NO.
-	05-00011-00-RS	ST. CLAIR	15	11
FED. ROAD DIST. NO. 8		ILLINOIS	FED. AID PROJECT-	
PVMT MARKING				

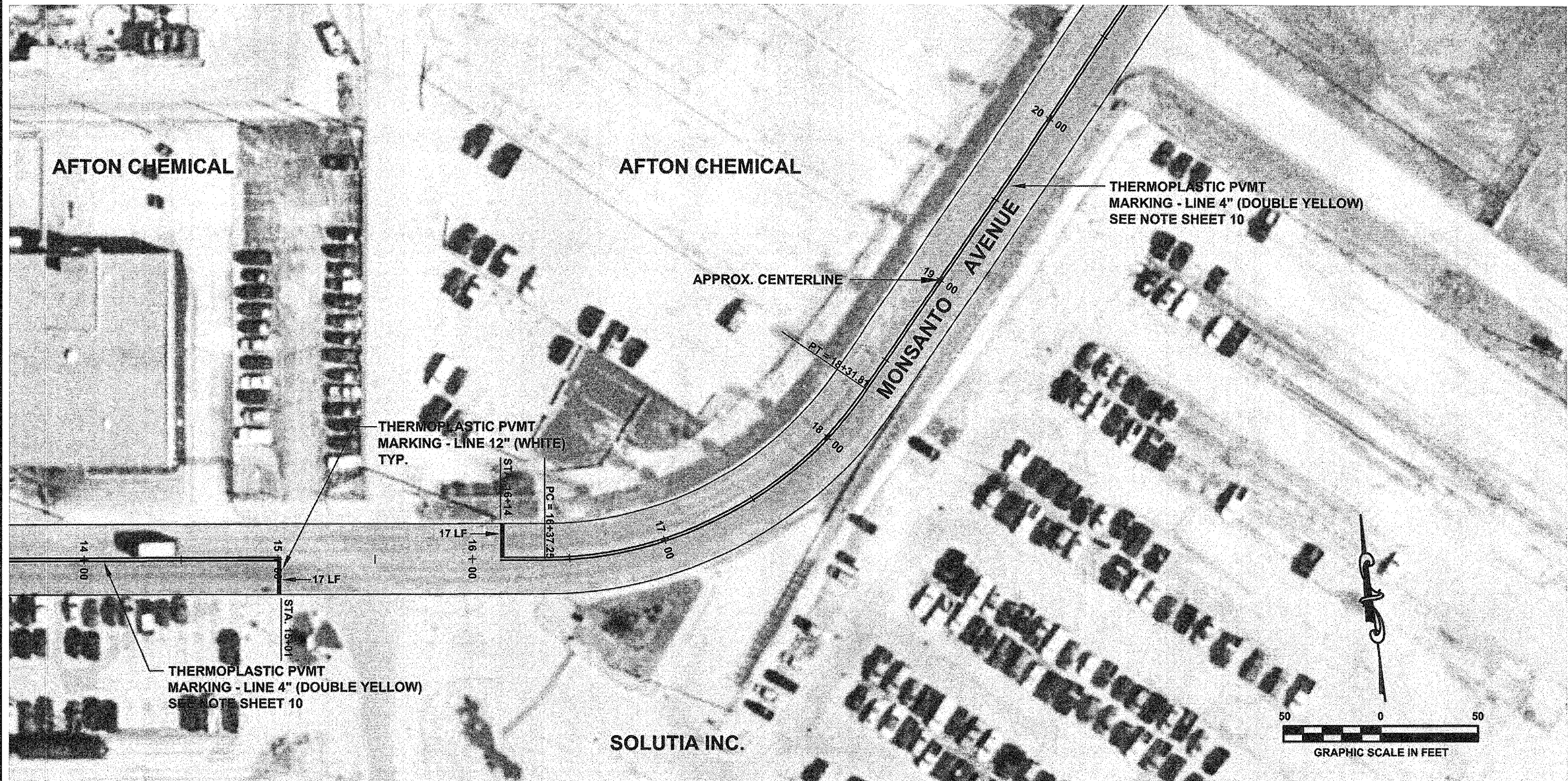
CONTRACT NO. 97273



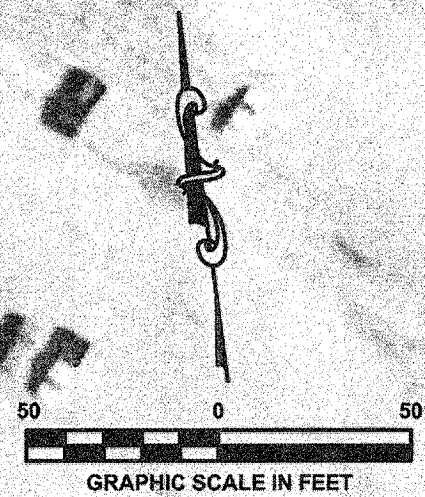
T:\Clients\SAUGET\7313-05-1 Monsanto Ave. Road Imp\dwg\Aerial Composite Striping.dwg, Plan Sit. 2, 4/12/2006 1:32:08 PM, \PHW100KM-3035, Ledger, 1:1

ROUTE NO.	SECTION	COUNTY	TOTAL SHEETS	SHEET NO.
-	05-0011 -00-RS	ST. CLAIR	15	12
FED. ROAD DIST. NO. 2		ILLINOIS	FED. AID PROJECT-	
PVMT MARKING				

CONTRACT NO. 97273

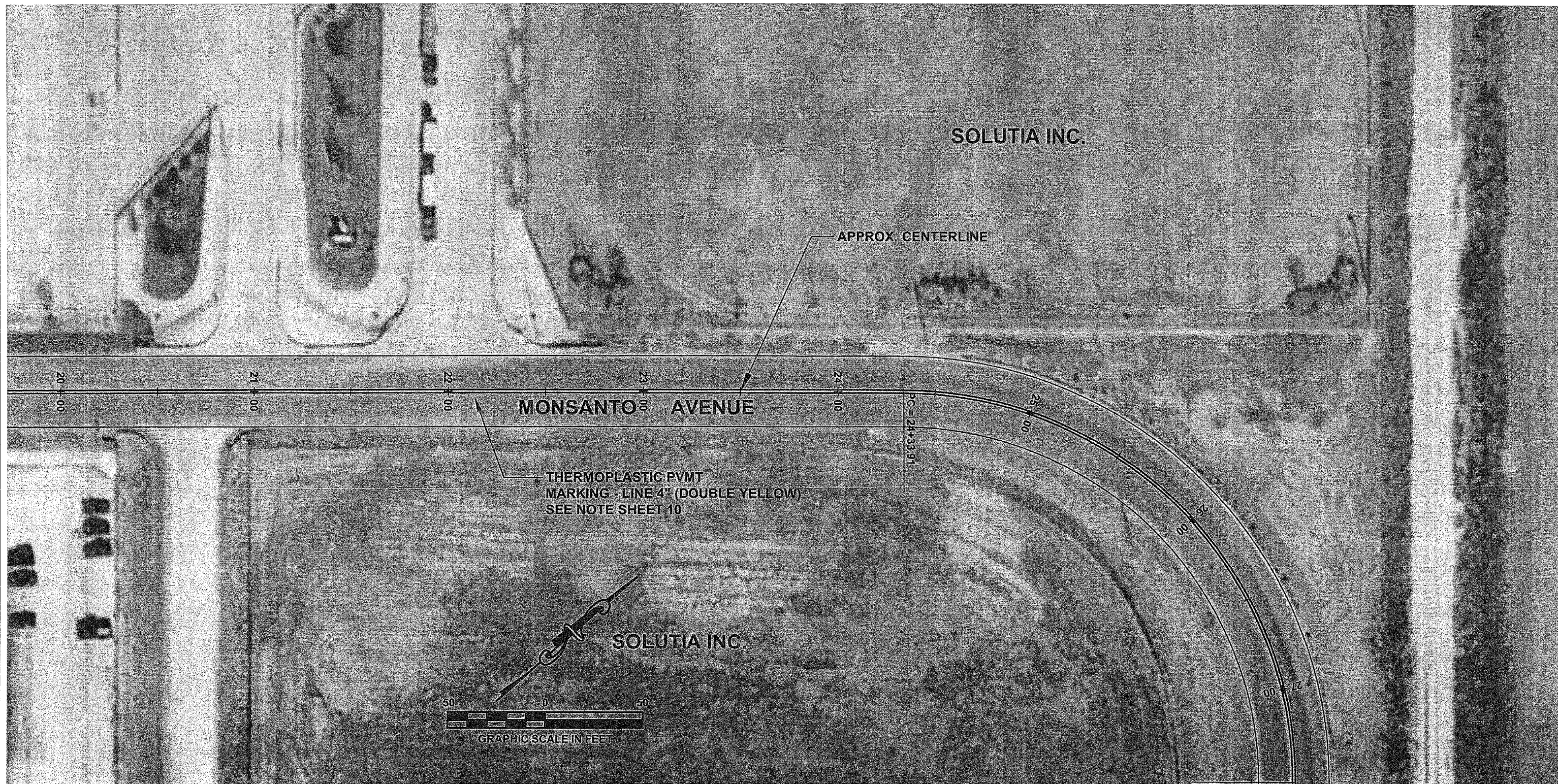


T:\Clients\SAUGET\713-05-1 Monsanto Ave. Road Imp\dwg\Aerial Composite Striping.dwg, Plan Sht. 3, 4/11/2006 11:25:43 AM, .jpg, \PHW100KM-3035, Ledger, 1:1



ROUTE NO.	SECTION	COUNTY	TOTAL SHEETS	SHEET NO.
-	05-00011 -00-RS	ST. CLAIR	15	13
FED. ROAD DIST. NO. 8		ILLINOIS	FED. AID PROJECT	
PVT MARKING				

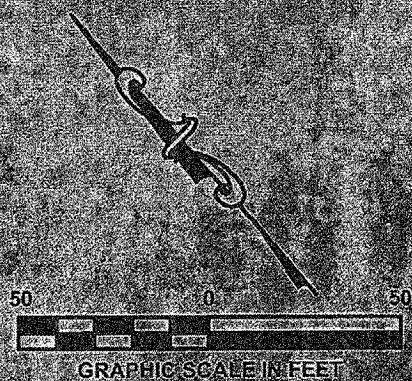
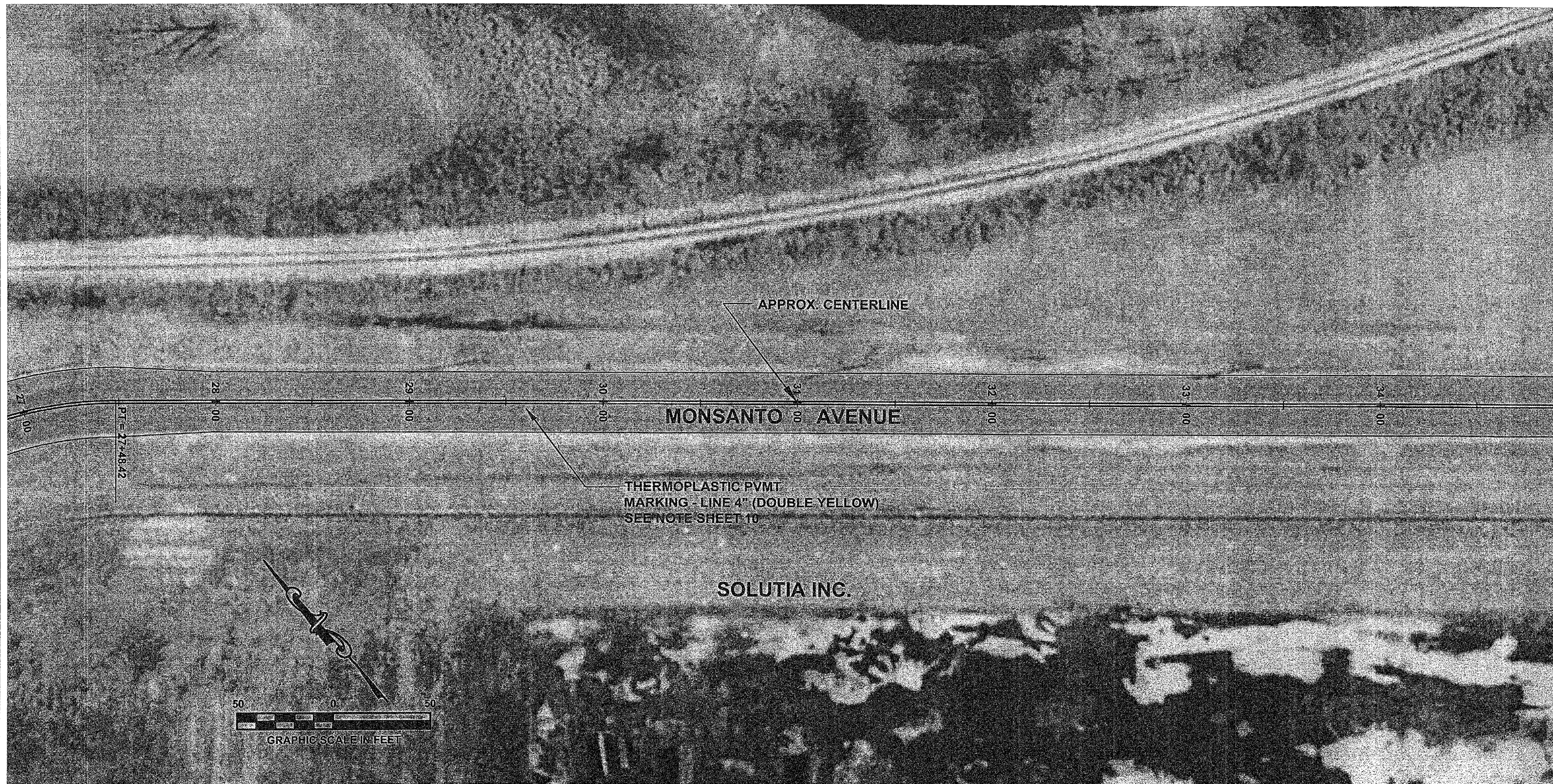
CONTRACT NO. 97273



C:\Clients\SAUGET\7313-05-1 Monsanto Ave. Road Imp'dwg\Aerial Composite Striping.dwg, Plan Sht. 4, 4/11/2006 11:26:00 AM, jpg, \PHW100\KM-3035, Ledger, 1:1

ROUTE NO.	SECTION	COUNTY	TOTAL SHEETS	SHEET NO.
-	05-00011 -00-RS	ST. CLAIR	15	14
FED. ROAD DIST. NO. 8		ILLINOIS	FED. AID PROJECT-	
PVT MARKING				

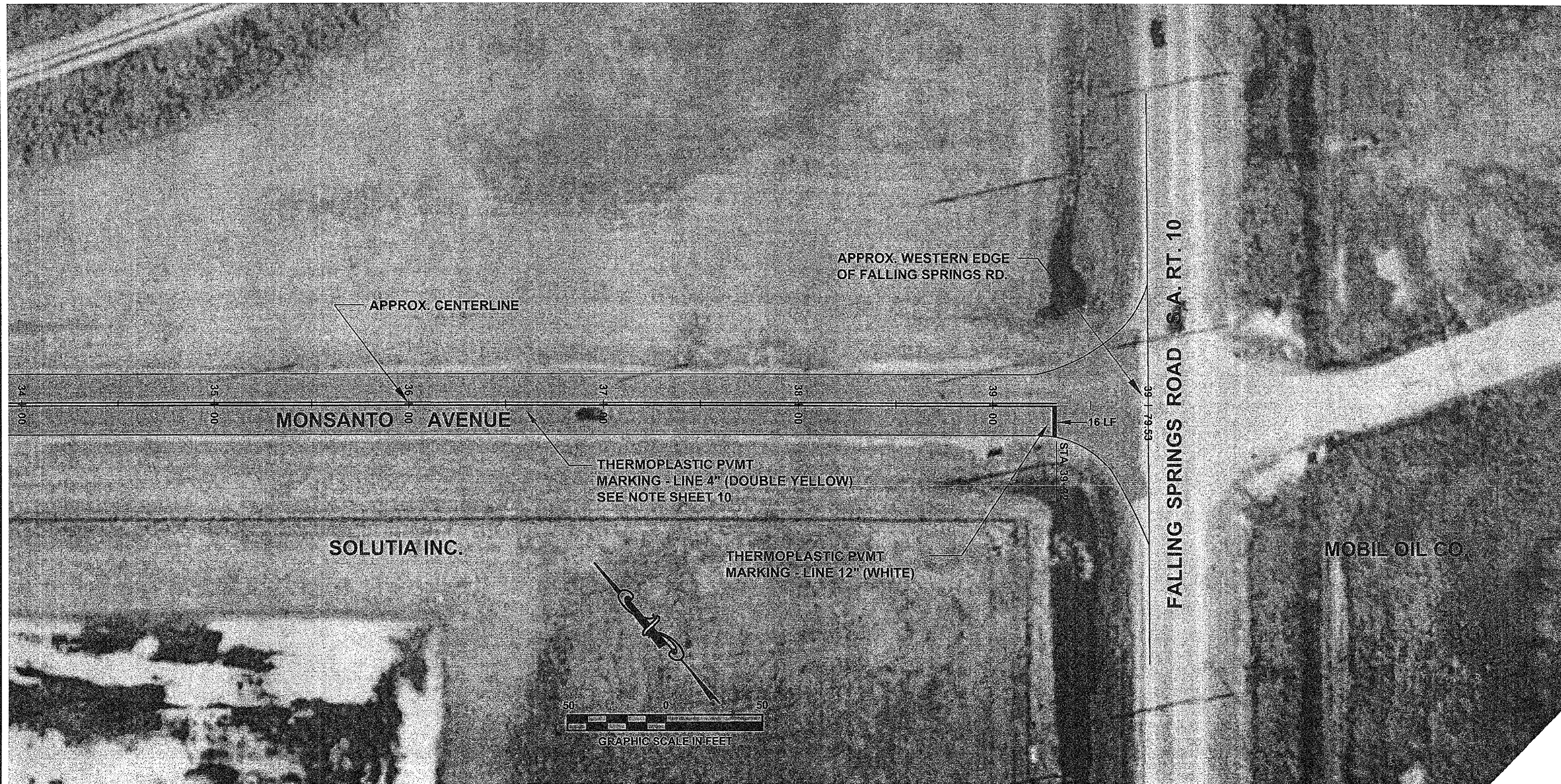
CONTRACT NO. 97273



C:\Clients\SAUGET\713-05-1 Monsanto Ave. Road Imp\dwg\Aerial Composite Striping.dwg, Plan Sht. 5, 4/11/2006 11:26:24 AM, .jpg, \PHW100\KM-3035, Ledger, 1:1

ROUTE NO.	SECTION	COUNTY	TOTAL SHEETS	SHEET NO.
-	05-00011 -00-RS	ST. CLAIR	15	15
FED. ROAD DIST. NO. 8		ILLINOIS	FED. AID PROJECT-	
PVT MARKING				

CONTRACT NO. 97273



F:\Clients\SAUGET\7313-05-1 Monsanto Ave. Road Imp\dwg\Aerial Composite Striping.dwg, Plan Sht. 6, 4/11/2006 11:26:44 AM, jpg, \PHW\100\KM-3035, Ledger, 1:1