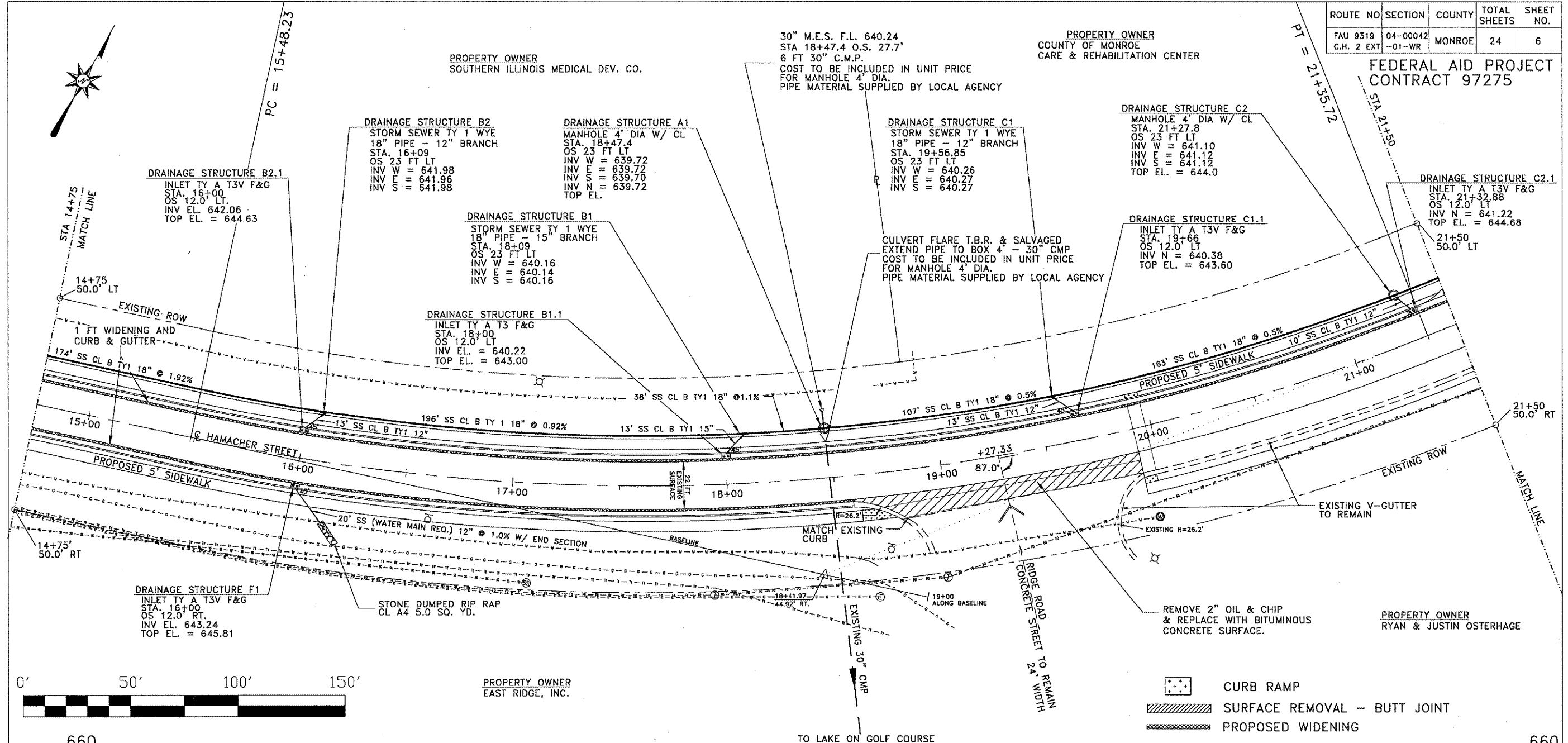


ROUTE NO	SECTION	COUNTY	TOTAL SHEETS	SHEET NO.
FAU 9319 C.H. 2 EXT	04-00042 -01-WR	MONROE	24	6

FEDERAL AID PROJECT
CONTRACT 97275



STATION	640	645	650	660
15+00	646.62	646.79	645.66	645.83
15+50	644.89	645.06	644.26	644.43
16+00	643.81	643.98	643.68	643.85
16+50	643.41	643.58	643.52	643.69
17+00	643.64	643.81	643.84	644.11
17+50	644.21	644.38	644.35	644.52
18+00	644.65	644.82	644.89	645.06
18+50				
19+00				
19+50				
20+00				
20+50				
21+00				
21+50				

PLAN & PROFILE
STA 14+75 TO 21+50
HAMACHER STREET IMPROVEMENTS
SECTION 04-00042-01-WR
CITY OF WATERLOO
MONROE COUNTY, IL