

F.A.I. RTE.	SECTION	COUNTY	TOTAL SHEETS	SHEET NO.
57	*	WILLIAMSON	60	1

\* [X1-(4,4-1,5,6,6-2)] R-1

FOR INDEX OF SHEETS, SEE SHEET NO. 2  
 FOR SUMMARY OF QUANTITIES, SEE SHEET NO. 4 - 6

**STATION EQUATIONS**

STA EQ 289+26.45 @ BK = STA 0+00.00 @ AH  
 STA EQ 57+43.55 @ BK = STA 57+46.55 @ AH  
 STA EQ 157+95.58 @ BK = STA 157+96.05 @ AH  
 STA EQ 347+00.75 @ BK = STA 348+43.15 @ AH  
 STA EQ 419+74.18 @ BK = STA 1461+00 @ AH

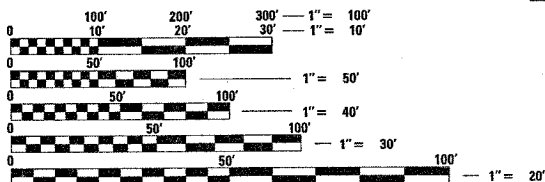
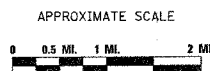
**TRAFFIC DATA**

I-57 TRAFFIC DATA  
 (NORTHBOUND LANES ONLY)  
 2004 ADT = 16,850 WITH 33% TRUCKS  
 2007 ADT = 17,880 WITH 33% TRUCKS  
 2017 ADT = 21,800 WITH 33% TRUCKS

**TOWNSHIPS**

HERRIN  
 WEST MARION

STATION	MILE POST
0+00	62
JOHNSTON CITY INTERCHANGE	59
1461+00	54
1465+00	54
MARION INTERCHANGE	54 A&B



FULL SIZE PLANS HAVE BEEN PREPARED USING STANDARD ENGINEERING SCALES. REDUCED SIZED PLANS WILL NOT CONFORM TO STANDARD SCALES. IN MAKING MEASUREMENTS ON REDUCED PLANS, THE ABOVE SCALES MAY BE USED.

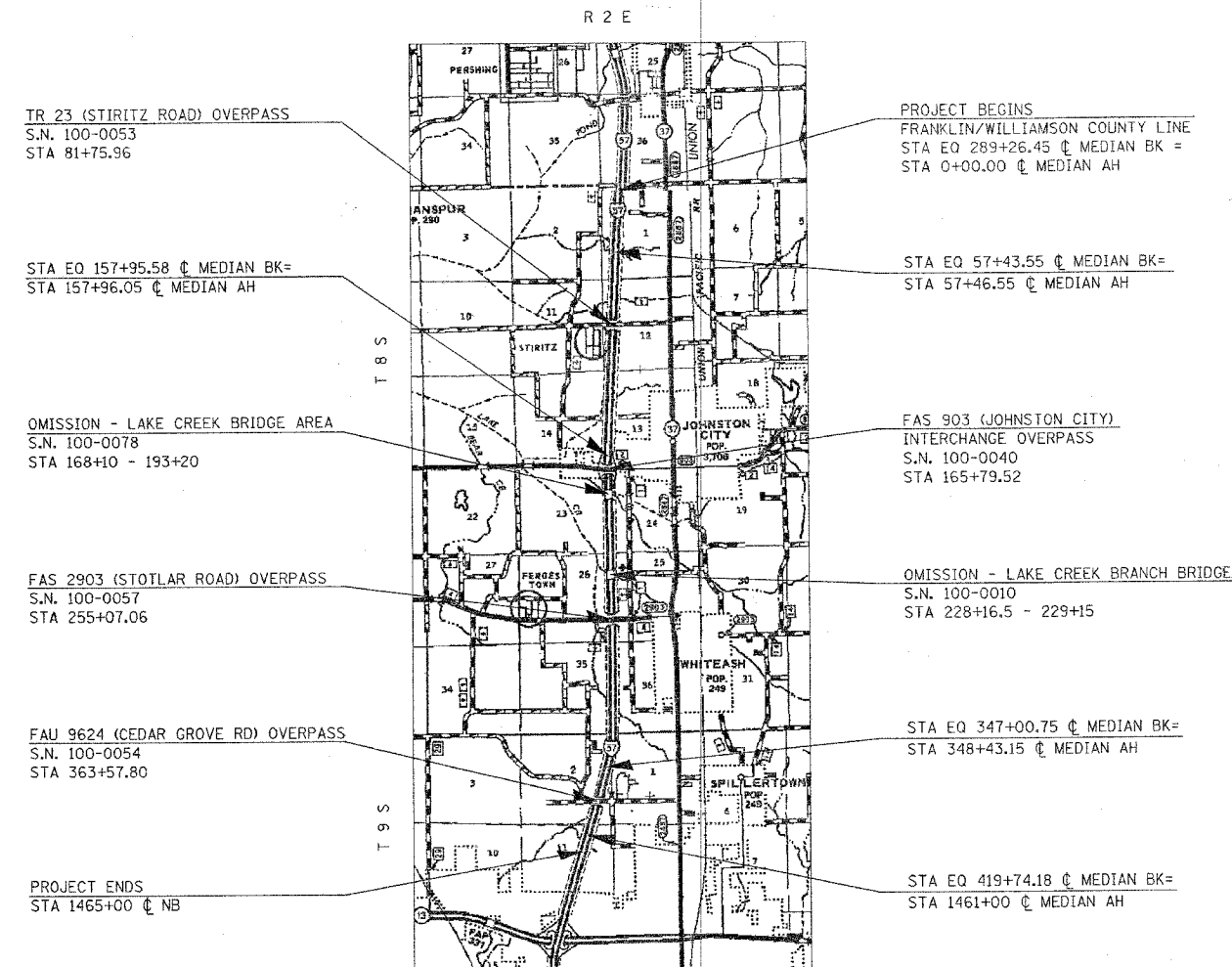
J.U.L.I.E.  
 JOINT UTILITY LOCATION INFORMATION FOR EXCAVATION  
 1-800-892-0123 or www.julie1call.com

**CONTRACT NO. 98948**

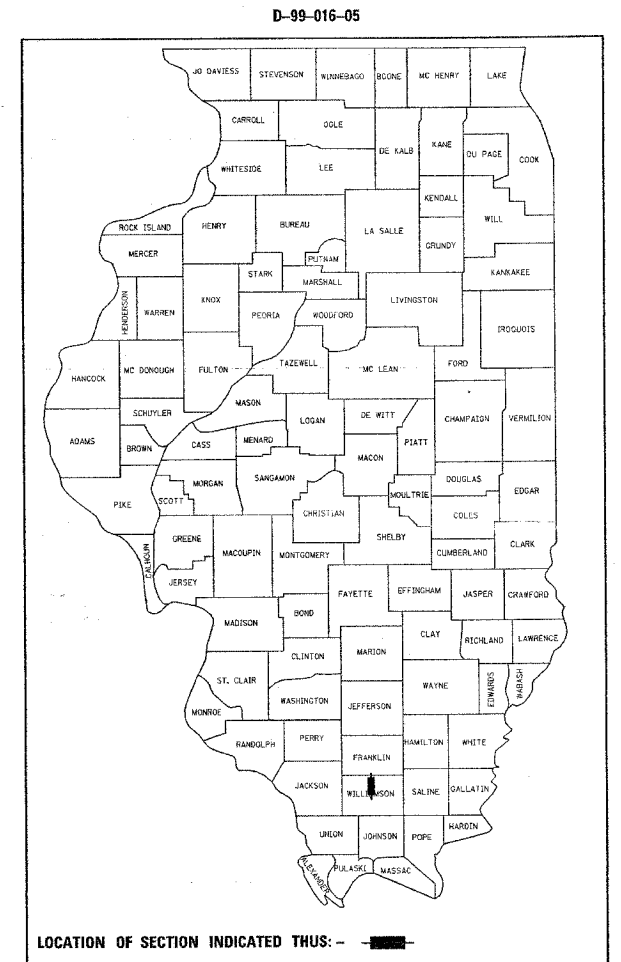
STATE OF ILLINOIS  
 DEPARTMENT OF TRANSPORTATION  
 DIVISION OF HIGHWAYS

**PROPOSED  
 INTERSTATE HIGHWAY PLANS**

F.A.I. ROUTE 57 (I-57)  
 SECTION [X1-(4,4-1,5,6,6-2)] R-1  
 PROJECT NO: **IM-057-2(145)062**  
 WILLIAMSON COUNTY  
 C-99-040-06



GROSS LENGTH OF PROJECT = 42,228.31 FT = 7.998 MILES (NB)  
 NET LENGTH OF PROJECT = 39,619.81 FT = 7.504 MILES (NB)



STATE OF ILLINOIS  
 DEPARTMENT OF TRANSPORTATION  
 DIVISION OF HIGHWAYS

SUBMITTED March 30 2006

Mary C. Romo  
 DEPUTY DIRECTOR OF HIGHWAYS, REGION ENGINEER

May 12, 2006  
Mike Stone  
 ENGINEER IN CHARGE, DESIGN AND ENVIRONMENT

May 12, 2006  
Milton R. Sen, P.E.  
 DIRECTOR OF HIGHWAYS, CHIEF ENGINEER

**PRINTED BY THE AUTHORITY  
 OF THE STATE OF ILLINOIS**

PROJECT ENGINEER: CHARLES STEIN  
 SQUAD LEADER: TERRI MILLER  
 (618) 549-2171  
 CENTREX 782-4554