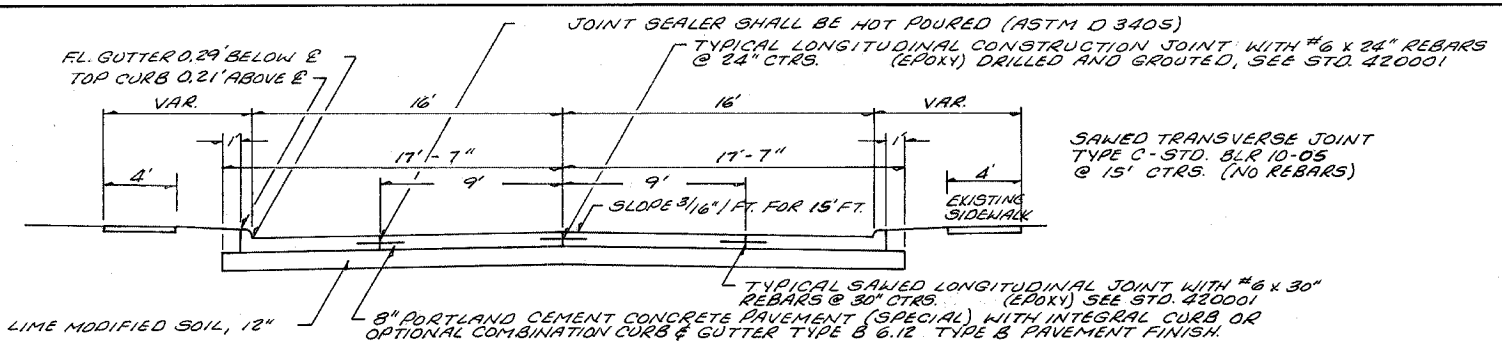
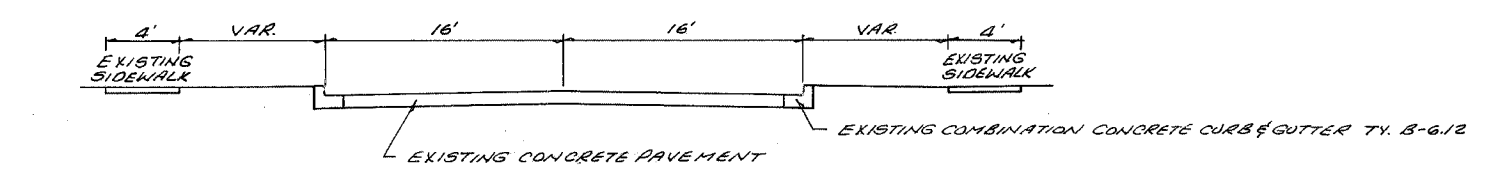


CITY	FAIRFIELD	TOTAL SHEETS	8	SHEET NO.	2
SECTION	06-00044-00-RD				
STA.		TO STA.			



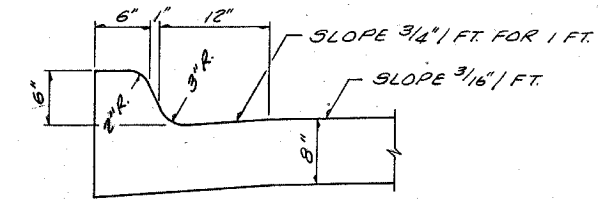
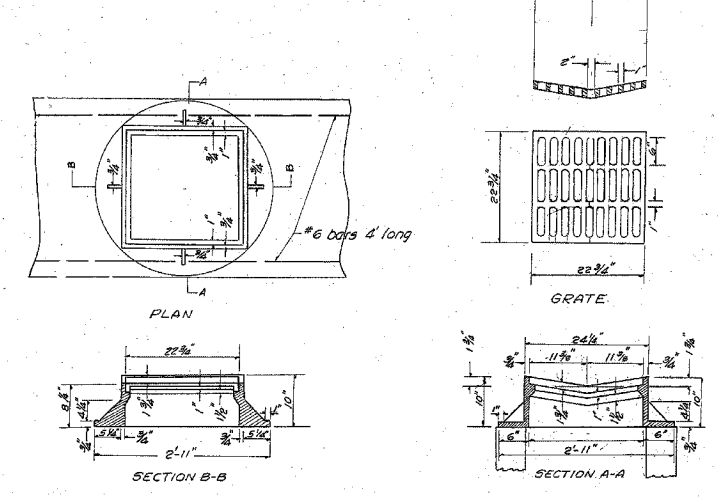
**TYPICAL SECTION PROPOSED IMPROVEMENT**

PAVEMENT DESIGN DATA (\* NORTH FIRST ST. (\*\* COURT ST.)  
 A.D.T. = \*4050 \*\*1300, S.D.T. = \*4375 \*\*1500, P.V. = \*4185 \*\*1420, S.U. = \*175 \*\*75,  
 M.U. = \*15 \*\*5, CLASS STREET = \*II \*\*III, T.F. = \*0.5 \*\*0.5,  
 PAVEMENT STRUCTURE: P.C.C. PAVEMENT SPECIAL 8 IN. WITH INTEGRAL CURB NON-REINFORCED WITH TRANSVERSE JOINTS @ 15 FT. SPACING & 12" LIME MODIFIED SOIL SUBGRADE

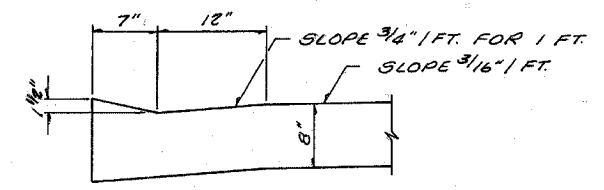


**TYPICAL SECTION EXISTING ROADWAY**  
 N. FIRST ST. & COURT ST.

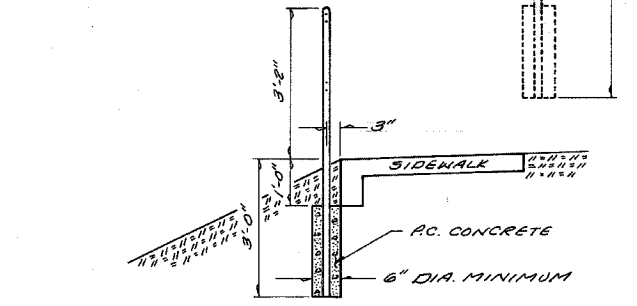
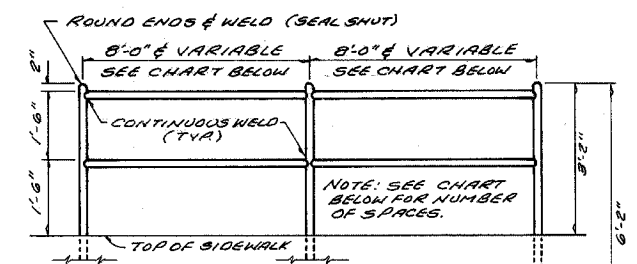
**DETAIL TYPE M-9 FRAME AND GRATE**  
 (EQUIVALENT TO MERMAR R-3508-B)



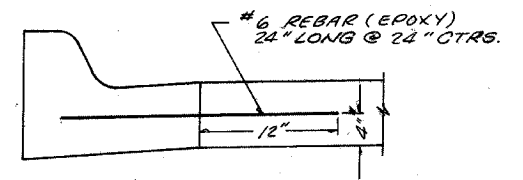
**DETAIL OF INTEGRAL CURB**



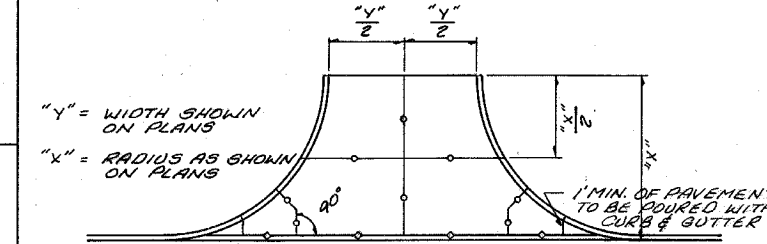
**DETAIL OF DEPRESSED INTEGRAL CURB**



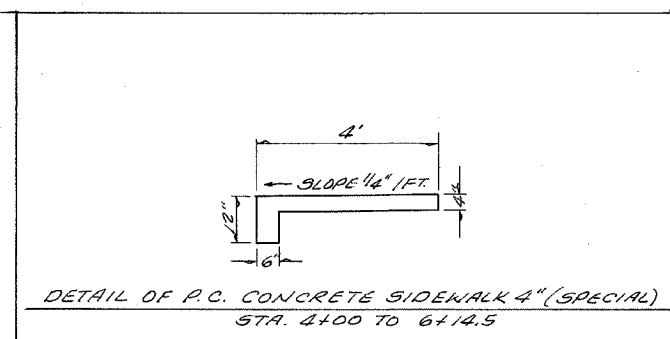
STA. 4120 TO 4144 = 24' 3 SPACES @ 8'-0"  
 STA. 4151 TO 5105 = 54' 6 SPACES @ 8'-0"  
 1 SPACE @ 6'-0"  
 STA. 5112 TO 6100 = 88' 11 SPACES @ 8'-0"  
 TOTAL = 166'  
**DETAIL OF PIPE HANDRAILS**



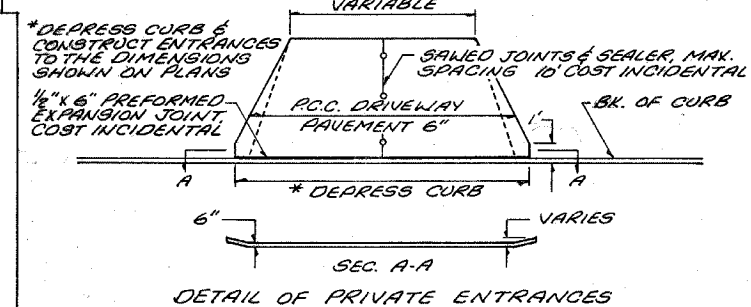
**DETAIL OF COMB. CONC. CURB & GUTTER TYPE B-6.12**  
 (ALTERNATE CONSTRUCTION)  
 SEE STANDARD 606001 FOR DIMENSIONS & DETAILS



\* LONGITUDINAL CONSTRUCTION JOINT  
 SAWS TRANSVERSE JOINT, TYPE C,  
 STD. BLR 10-05 NO-REBAR.  
**DETAIL OF PAVEMENT JOINTS AT STREET INTERSECTIONS**  
 \* WITH #6 x 24" REBARS @ 24" CTRS. DRILLED & GROUTED (EPOXY)



**DETAIL OF P.C. CONCRETE SIDEWALK 4" (SPECIAL)**  
 STA. 4100 TO 614.5



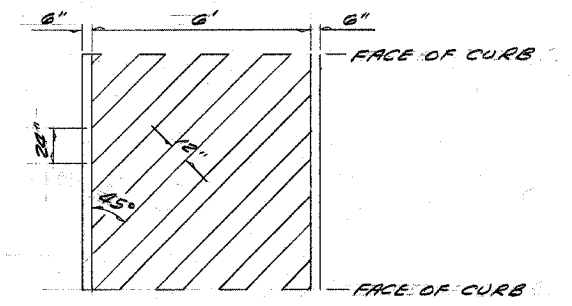
**DETAIL OF PRIVATE ENTRANCES**

**SUMMARY OF QUANTITIES**

TOTAL ONLY	NORTH 1ST ST ONLY	COURT ST ONLY	UNIT	ITEM	5000 CODE
1		1	EACH	MANHOLES, TYPE A, 4" DIAMETER, TYPE M-9 FRAME AND GRATE	XX00063
3,860	1,978	1,882	SQ YD	PORTLAND CEMENT CONCRETE PAVEMENT 8" (SPECIAL) WITH INTEGRAL CURB	1R420129
1.43	1.43		CU YD	CONCRETE STEPS	Z0012450
5	3	2	EACH	STORM WATER CURB OPENING	XX000388
4	4		EACH	CONC STEP REMOVAL	X0300351
87	35	52	CU YD	EARTH EXCAVATION	20200100
92	92		CU YD	TRENCH BACKFILL	20800150
0.11	0.02	0.09	ACRE	SEEDING, CLASS I (SPECIAL)	25000900
236	191	45	SQ YD	SODDING, SPECIAL	25200700
4,040	2,090	1,950	SQ YD	PROCESSING LIME MODIFIED SOILS 12"	30200600
101	52	49	TON	LIME	31001500
75	38	37	TON	SUB-BASE GRANULAR MATERIAL, TYPE C	31101900
255	128	127	SQ YD	PORTLAND CEMENT CONCRETE DRIVEWAY PAVEMENT, 6 INCH	42300200
1,113	417	696	SQ FT	PORTLAND CEMENT CONCRETE SIDEWALK, 4 INCH	42400100
184		184	SQ FT	PORTLAND CEMENT CONCRETE SIDEWALK, 6 INCH	42400300
720	720		SQ FT	PORTLAND CEMENT CONCRETE SIDEWALK, 4 INCH, SPECIAL	42400420
3,496	1,785	1,711	SQ YD	PAVEMENT REMOVAL	44000100
246	108	138	SQ YD	DRIVEWAY PAVEMENT REMOVAL	44000200
121	121		FOOT	GUTTER REMOVAL	44000400
1,778	881	897	FOOT	COMBINATION CURB AND GUTTER REMOVAL	44000500
1,763	1,025	738	SQ FT	SIDEWALK REMOVAL	44000600
166	166		FOOT	PIPE HANDRAIL	51000105
135	135		FOOT	STORM SEWERS, CLASS A, TYPE 1 12"	550A0050
75	75		FOOT	STORM SEWERS, CLASS A, TYPE 1 15"	550A0070
14	14		FOOT	STORM SEWER REMOVAL 6"	55100200
140	140		FOOT	STORM SEWER REMOVAL 12"	55100500
36	36		FOOT	STORM SEWER REMOVAL 15"	55100700
20	12	8	FOOT	PIPE DRAINS 4"	60100905
4	4		FOOT	PIPE DRAINS 6"	60100915
3	3		EACH	INLETS, TYPE B, TYPE M-9 FRAME	60240350
1	1		EACH	MANHOLES TO BE ADJUSTED	60255500
1	1		EACH	INLETS TO BE RECONSTRUCTED WITH NEW TYPE II FRAME AND GRATE	60263900
1	1		EACH	REMOVING MANHOLES	60500040
3	3		EACH	REMOVING INLETS	60500060
1			L SUM	MOBILIZATION	67100100
1			L SUM	TRAFFIC CONTROL AND PROTECTION	70101700
524	152	372	FOOT	THERMOPLASTIC PAVEMENT MARKING - LINE 6"	78000400 *
617	186	431	FOOT	THERMOPLASTIC PAVEMENT MARKING - LINE 12"	78000600 *

**THERMOPLASTIC PAVEMENT MARKING-LINE**

	WHITE 6" LINE	WHITE 12" LINE
<b>NORTH FIRST STREET</b>		
A.R. STA. 0+98	76'	93'
S.S.R. STA. 3+43 TO 3+81	76'	93'
<b>COURT STREET</b>		
A.R. STA. 9+33	70'	77'
S.S.L. STA. 9+41 TO 9+82	82'	101'
S.S.R. STA. 9+40 TO 9+81	82'	101'
A.R. STA. 9+89	68'	75'
A.R. STA. 12+26	70'	77'
<b>TOTALS =</b>	<b>524'</b>	<b>617'</b>



**TYPICAL LAYOUT OF CROSSWALKS**

\* SPECIALTY ITEMS