

CITY	FAIRFIELD	TOTAL SHEETS	8	SHEET NO.	3
SECTION	06-00044-00-RP	TO STA.	4100		
STA.	0193.7				

NORTH FIRST STREET

**PLAN**  
 SHEET NO. 3  
 DATE: 11/14/04  
 DRAWN BY: J. W. BROWN  
 CHECKED BY: J. W. BROWN

**UTILITIES**

**WATER**  
 City of Fairfield  
 109 NE 2ND  
 Fairfield, IL 62837  
 618-842-7015

**TELEPHONE**  
 VERIZON  
 225 E. Chestnut  
 BOX 460  
 Olney, IL 62450  
 618-395-6189

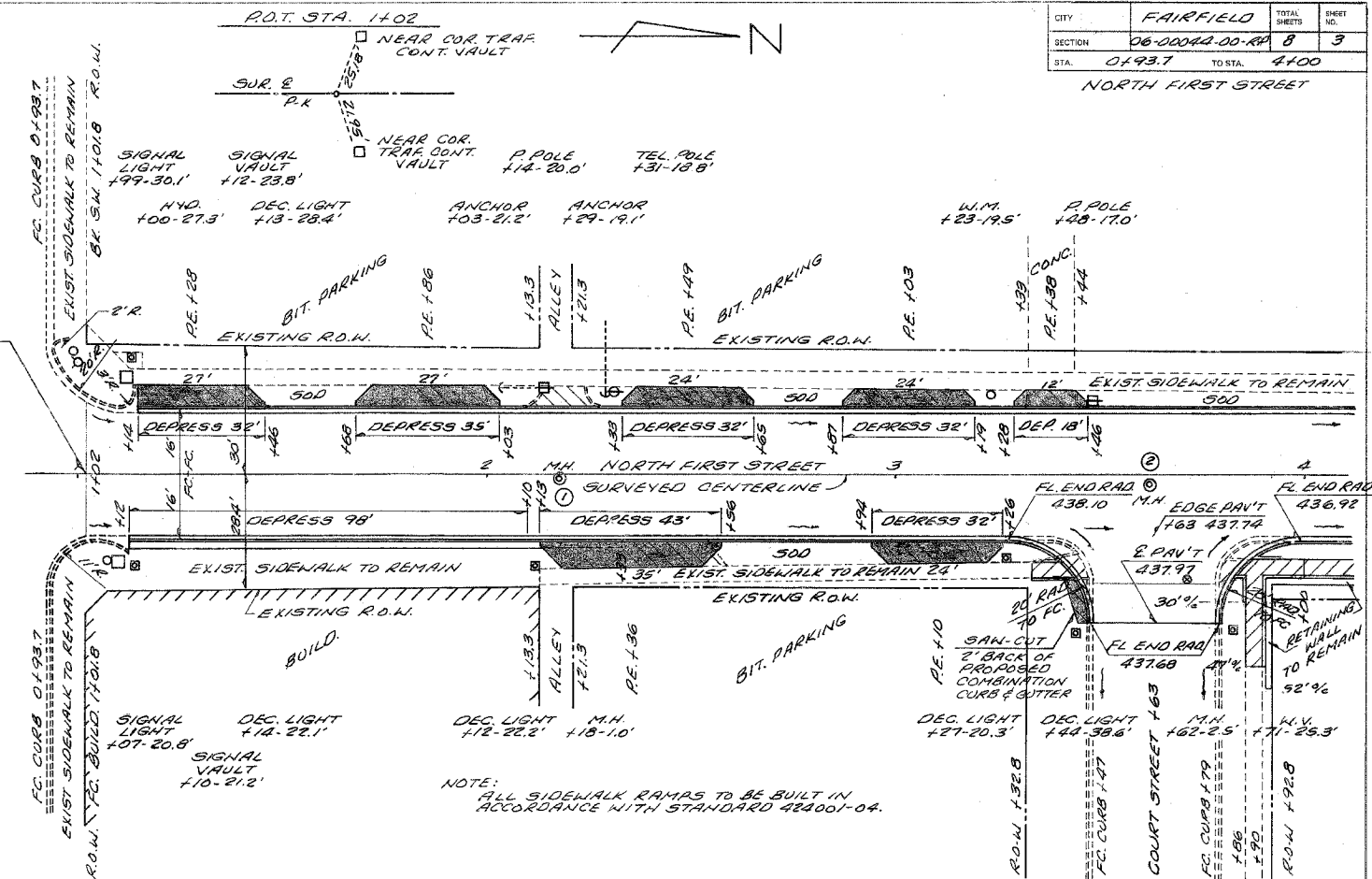
**ELECTRIC**  
 City of Fairfield  
 109 NE 2ND  
 Fairfield, IL 62837  
 618-842-3445

**GAS**  
 City of Fairfield  
 1400 ML. Vernon Rd  
 Fairfield, IL 62837  
 618-842-9736

**SANITARY SEWER**  
 City of Fairfield  
 109 NE 2ND  
 Fairfield, IL 62837  
 618-842-7015

**PROFILE**  
 SHEET NO. 3  
 DATE: 11/14/04  
 DRAWN BY: J. W. BROWN  
 CHECKED BY: J. W. BROWN

SECTION 06-00044-00-RP  
 BEGINS STA. 1402  
 N.E. FIRST STREET



NOTE: ALL SIDEWALK RAMPS TO BE BUILT IN ACCORDANCE WITH STANDARD 424001-04.

ITEM	QUANTITY	UNIT	PRICE	TOTAL
COMBINATION CURB & GUTTER TO REMAIN	LT STA 1402-1414 RT STA 1402-1412			
P.C. CONCRETE SIDEWALK 4"	RT 1412 TO 2113 = 100 SQ. FT. RT 3137 TO 3143 = 21 RT 3184 TO 4100 = 169			TOTAL = 397 SQ. FT.
P.C. CONCRETE DRIVEWAY PAVT 6"	LT 1428 = 17.0 SQ. YD. LT 1436 = 17.7 RT 2135 = 28.8 LT 2124 = 15.1 RT 3103 = 14.5 RT 3140 = 16.1 LT 3138 = 2.8 RT 3149 = 3.1			TOTAL = 119.8 SQ. YD.
PROCESSING LIME MODIFIED SOILS 12"	STA 1402-6114.5 = 2090 SQ. YD.			
LIME	STA 1402-6114.5 = 52 TONS			
SEEDING, CLASS 1 (SPECIAL)	LT & RT STA 1402-4100 = 0.02 ACRE			
SODDING (SPECIAL)	LT & RT STA 410-6114.5 = 191 SQ. YD.			
P.C.C. PAVEMENT 8" SPECIAL W/ INTEGRAL CURB	STA 1402-6114.50 = 1978 SQ. YD.			
EARTHWORK SCHEDULE (STA 1402-6114.6)	EARTH EXCAVATION = 35 CU. YD. EMBANKMENT = 34 CU. YD.			
SUB-BASE GRANULAR MATERIAL, TYPE C	VARIOUS LOCATIONS NORTH FIRST ST. = 38 TON			
DRAINAGE STRUCTURES	10' RT 2118 SAN. MANHOLE TO REMAIN 438.85 25' RT 3182 SAN. MANHOLE TO REMAIN 438.00			