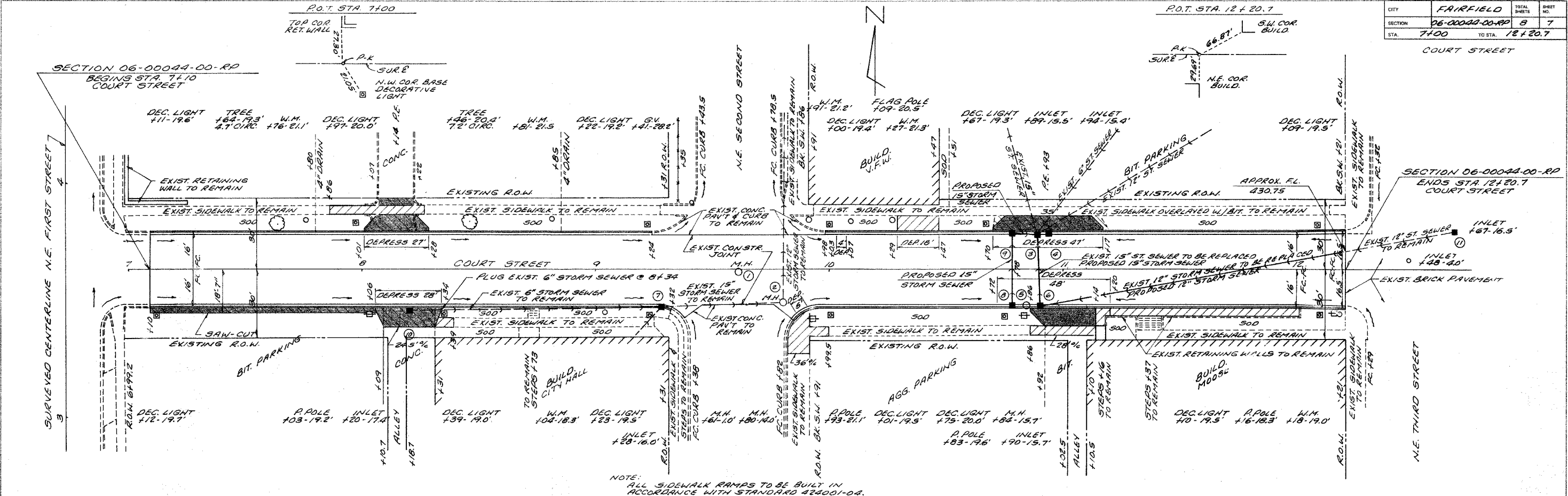


CITY	FAIRFIELD	TOTAL SHEETS	8	SHEET NO.	7
SECTION	06-00044-00-RP	STA.	7+00	TO STA.	12+20.7

COURT STREET

PLAN
 SURVEYED
 SHOWN
 PROPOSED
 EXISTING
 NOTE: BOOK, N.A. & NOTES
 NO. 1 OF 10 SHEETS



NOTE: ALL SIDEWALK RAMPS TO BE BUILT IN ACCORDANCE WITH STANDARD 424001-04.

PROFILE
 SURVEYED
 SHOWN
 PROPOSED
 EXISTING
 NOTE: BOOK, N.A. & NOTES
 NO. 1 OF 10 SHEETS

ITEM	QUANTITY	UNIT	AMOUNT	ITEM	QUANTITY	UNIT	AMOUNT	ITEM	QUANTITY	UNIT	AMOUNT	ITEM	QUANTITY	UNIT	AMOUNT
<p>TRENCH BACKFILL</p> <p>9 CU. YD.</p> <p>22</p> <p>49</p> <p>N.W. 2</p> <p>N.E. 4</p> <p>TOTAL 92 CU. YD.</p>															
<p>COMBINATION CURB & GUTTER REMOVAL</p> <p>LT & RT 7+10 TO 12+20.7 = 897 FT</p>															
<p>P.C. CONCRETE DRIVEWAY PAVEMENT</p> <p>RT 7+10 TO 8+07 = 21.3 SQ. YD.</p> <p>RT 8+20 = 22.3 "</p> <p>LT 10+83 = 22.9 "</p> <p>RT 11+01 = 20.9 "</p> <p>LT 8+14 = 32.6 "</p> <p>TOTAL = 121.0 SQ. YD.</p>															
<p>DRIVEWAY PAVEMENT REMOVAL</p> <p>RT 7+10 TO 8+07 = 22.0 SQ. YD.</p> <p>LT 8+14 = 33.6 "</p> <p>RT 8+20 = 19.6 "</p> <p>LT 10+83 = 33.9 "</p> <p>RT 11+01 = 28.6 "</p> <p>TOTAL = 137.7 SQ. YD.</p>															
<p>PIPE DRAINING</p> <p>4" 6"</p> <p>LT 7+80 = 4 "</p> <p>LT 8+85 = 4 "</p> <p>LT 10+83 = 4 "</p> <p>TOTAL = 8' 4"</p>															
<p>STORM WATER CURB OPENING</p> <p>LT 7+80 = 1 EACH</p> <p>LT 8+85 = 1 EACH</p> <p>TOTAL = 2 EACH</p>															
<p>P.C. CONCRETE SIDEWALK</p> <p>4" 6"</p> <p>LT 7+86 = 8+07 = 82 SQ. FT.</p> <p>LT 8+22 = 8+27 = 20 "</p> <p>RT 8+32 = 8+39 = 28 "</p> <p>LT 10+83 = 9+99 = 176 "</p> <p>LT 10+89 = 10+97 = 119 "</p> <p>RT 10+86 = 10+92 = 28 "</p> <p>RT 11+80 = 12+01 = 245 "</p> <p>TOTAL = 696 SQ. FT.</p>															
<p>P.C. CONCRETE SIDEWALK</p> <p>6"</p> <p>LT 8+27 = 8+27 = 60 SQ. FT.</p> <p>RT 10+72 = 11+14 = 88 "</p> <p>RT 11+14 = 11+20 = 36 "</p> <p>TOTAL = 184 SQ. FT.</p>															
<p>PAVEMENT REMOVAL</p> <p>7+10 TO 12+20.7 = 1711.59 YD.</p> <p>STA 7+10 - 12+20.7 = 1950 SQ. YD.</p> <p>90' V.C.</p>															
<p>PROCESSING LIME MODIFIED SOILS</p> <p>STA 7+10 - 12+20.7 = 1950 SQ. YD.</p> <p>90' V.C.</p>															
<p>STORM SEWER</p> <p>TY 1</p> <p>12" 15'</p> <p>12" 30'</p> <p>12" 30'</p> <p>9" 6'</p> <p>6" 6'</p> <p>6" 6'</p> <p>12" 129'</p> <p>TOTALS = 135' 75"</p>															
<p>STORM SEWER REMOVAL</p> <p>6" 12" 12'</p> <p>5' 6'</p> <p>30'</p> <p>129'</p> <p>TOTALS = 14' 140' 36"</p>															
<p>DRAINAGE STRUCTURES</p> <p>GRATE INVERT</p> <p>1 10' RT 7+61 MANHOLE TO REMAIN 433.31</p> <p>2 14' RT 9+80 MANHOLE TO REMAIN 432.75</p> <p>3 16' LT 10+89 MANHOLE & DIA. W/ FLAT SLAB 431.48 425.89 (18" DIA) TOP TY 12-9 F&G</p> <p>4 14' LT 10+94 INLET TO BE REMOVED 431.55</p> <p>5 15' RT 10+84 MANHOLE TO BE ADJUSTED 431.49</p> <p>6 14' RT 10+90 INLET TY 12-9 F&G 425.90 (N.E.E.)</p> <p>7 14' RT 9+88 INLET TO BE RECONSTRUCTED 433.66 429.16 W/ NEW TY 12 F&G</p> <p>8 14' RT 10+78 INLET TY 12-9 F&G 431.45 427.29</p> <p>9 14' LT 10+78 INLET TY 12-9 F&G 431.45 427.45</p> <p>10 15' LT 10+90 INLET TO BE REMOVED</p> <p>11 14' RT 8+20 INLET TO BE REMOVED</p> <p>12 14.5 LT 12+67 INLET TO REMAIN</p>															
<p>SIDEWALK REMOVAL</p> <p>LT 7+86 = 8+07 = 59 SQ. FT.</p> <p>LT 8+22 = 8+27 = 20 "</p> <p>RT 8+32 = 8+39 = 28 "</p> <p>LT 9+83 = 9+99 = 176 "</p> <p>LT 10+83 = 10+97 = 119 "</p> <p>RT 10+86 = 10+92 = 28 "</p> <p>RT 11+14 = 12+01 = 287 "</p> <p>TOTAL = 739 SQ. FT.</p>															
<p>EARTHWORK SCHEDULE</p> <p>EARTH EXCAVATION = 52 CU. YD.</p> <p>EMBANKMENT = 59 CU. YD.</p> <p>SUB-BASE GRANULAR MATERIAL, TYPE C</p> <p>VARIOUS LOCATIONS COURT STREET: 37 TON</p> <p>SEEDING, CLASS 1 (5000/AL)</p> <p>LT STA 7+10 - 12+20.7 = 0.06 ACRE</p> <p>RT STA 9+91 - 12+20.7 = 0.03 "</p> <p>TOTAL = 0.09 ACRE</p> <p>SOODING (SPECIAL)</p> <p>RT STA 8+31 - 9+32 = 45 SQ. YD.</p>															

PLATE 100 HIGWAY FEDERAL JOB SHEET SINGLE PLAN AND PROFILE-FULL LINE NATIONAL HIGHWAY BUILDING BOARD