

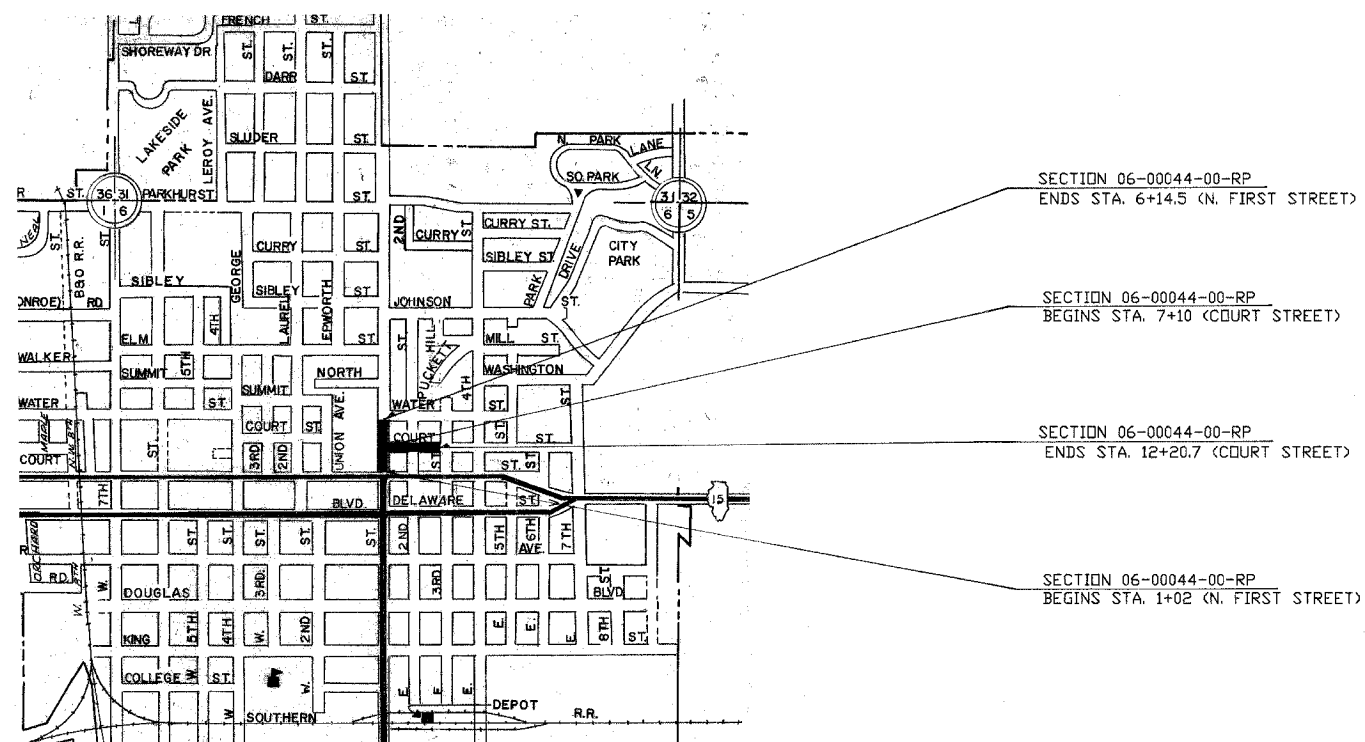
CITY	FAIRFIELD	TOTAL SHEETS	SHEET NO.
SECTION	06-00044-00-RP	8	1
STA.	TO STA.		

STATE OF ILLINOIS  
DEPARTMENT OF TRANSPORTATION  
DIVISION OF HIGHWAYS  
PLANS FOR PROPOSED  
SURFACE TRANSPORTATION URBAN PROJECT  
CITY OF FAIRFIELD  
WAYNE COUNTY  
SECTION 06-00044-00-RP  
NORTH FIRST STREET AND COURT STREET  
PROJECT M-5022(7)  
JOB NO. C-99-512-06  
FAU 8692 & FAU 8685

INDEX OF SHEETS

- 1 COVER SHEET
- 2 SUMMARY OF QUANTITIES
- 2 TYPICAL SECTIONS
- 3-4 PLAN-PROFILE (N. FIRST ST.)
- 5-6 CROSS SECTIONS (N. FIRST ST.)
- 7 PLAN-PROFILE (COURT ST.)
- 8 CROSS SECTIONS (COURT ST.)

- STANDARDS:
- 42001-06 PAVEMENT JOINTS
  - 42401-04 CURB RAMPS FOR SIDEWALK
  - 602306-01 TYPE B INLET
  - 602401-01 TYPE A MANHOLE
  - 602601 FLAT SLAB TOP
  - 604051-02 TYPE 11 FRAME & GRATE
  - 606001-02 COMB. CONC. CURB & GUTTER
  - 702001-06 TRAFFIC CONTRL DEVICES
  - BLR 10-05 PCC PAVEMENT SPECIAL
  - BLR 21-6 TRAFFIC CONTRL
  - BLR 22-4 TRAFFIC CONTRL
  - 701701-04 TRAFFIC CONTROL



CONTRACT NO. 99245

FUNCTIONAL CLASS NORTH FIRST ST. (FAU 8692) : URBAN COLLECTOR  
FUNCTIONAL CLASS COURT ST. (FAU 8685) : URBAN COLLECTOR

ADT= 4050  
ADT=1300

LOCATION MAP

APPROXIMATE SCALE: 1 INCH = 800 FEET  
NET LENGTH = 512.5 FEET = 0.097 MILES (N. FIRST STREET)  
NET LENGTH = 510.7 FEET = 0.097 MILES (COURT STREET)  
TOTAL LENGTH = 1023.2 FEET = 0.194 MILES

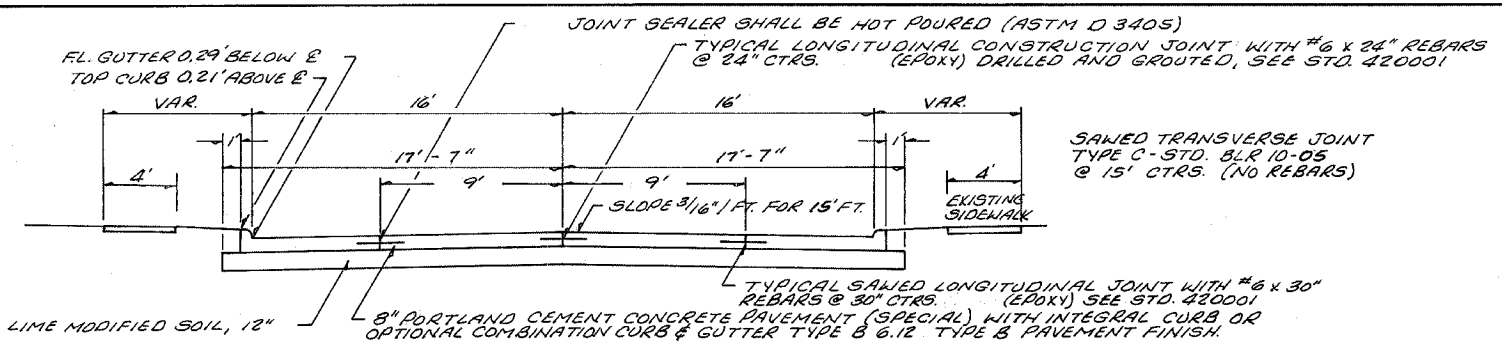
TOLL FREE JOINT UTILITY LOCATING  
INFORMATION FOR EXCAVATORS (J.U.L.I.E.)  
TELEPHONE NO. 1-800-892-0123

CONNOR & CONNOR, INC.  
PROFESSIONAL DESIGN FIRM #184-000832

*Michael...* 2/23/2006  
ILLINOIS REGISTERED PROFESSIONAL ENGINEER # 31350  
LICENSE EXPIRES NOVEMBER 30, 2007

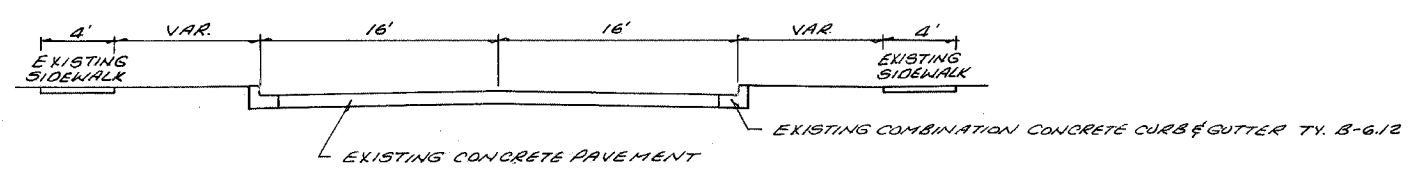
SUBMITTED	2-3-06
<i>Wayne...</i> MAYOR LOCAL AGENCY REPRESENTATIVE	
PASSED	MARCH 7, 2006
<i>Dennis W. Hill</i> ENGINEER OF LOCAL ROADS AND STREETS	
APPROVED	<i>April...</i> 2006
<i>Mary C. Lamie</i> MARY C. LAMIE, P. E. DEPUTY DIRECTOR OF HIGHWAYS REGION FIVE ENGINEER	

CITY	FAIRFIELD	TOTAL SHEETS	SHEET NO.
SECTION	06-00044-00-RD	8	2
STA.	TO STA.		



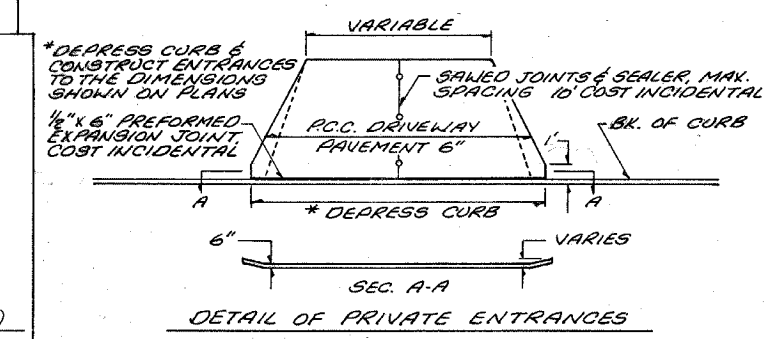
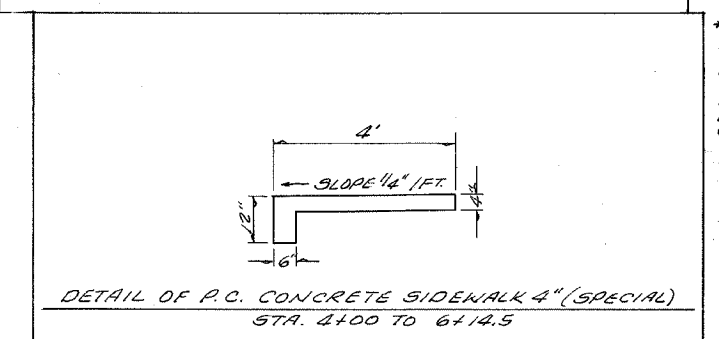
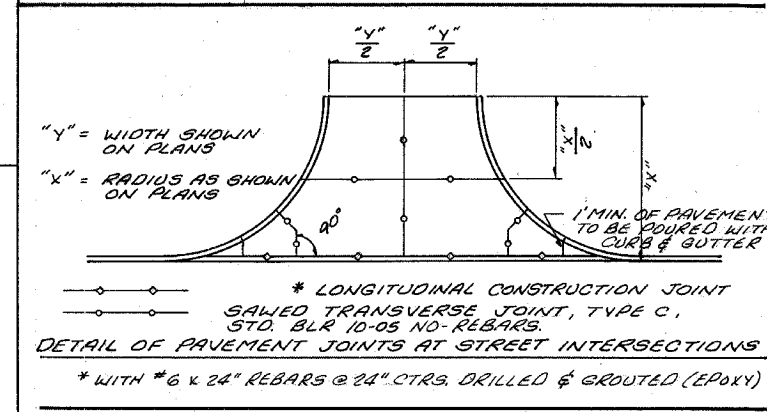
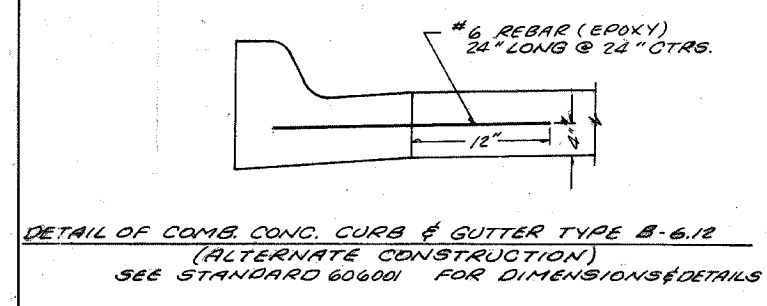
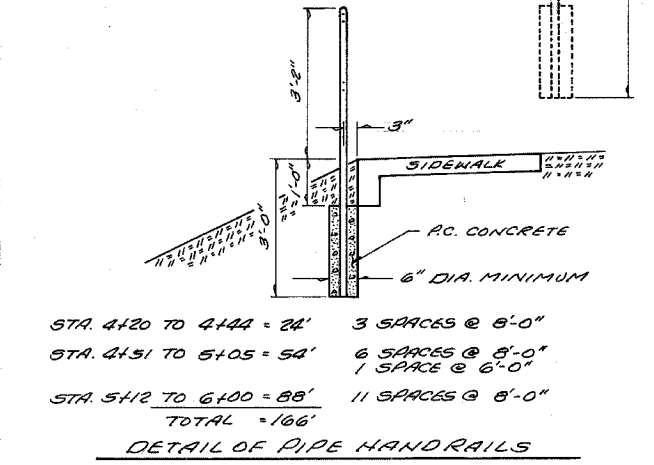
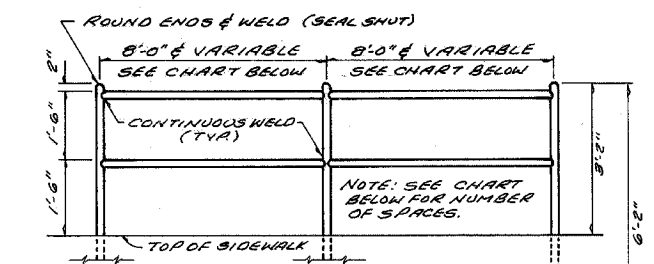
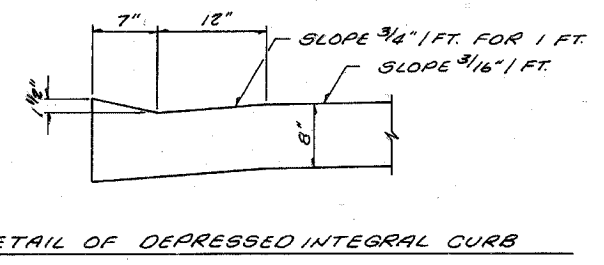
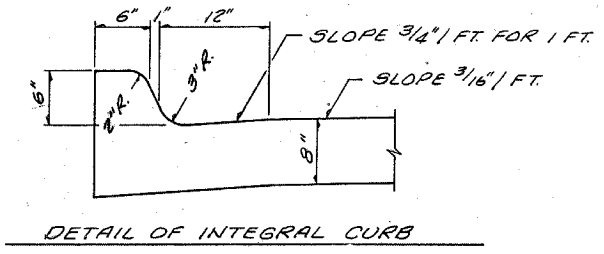
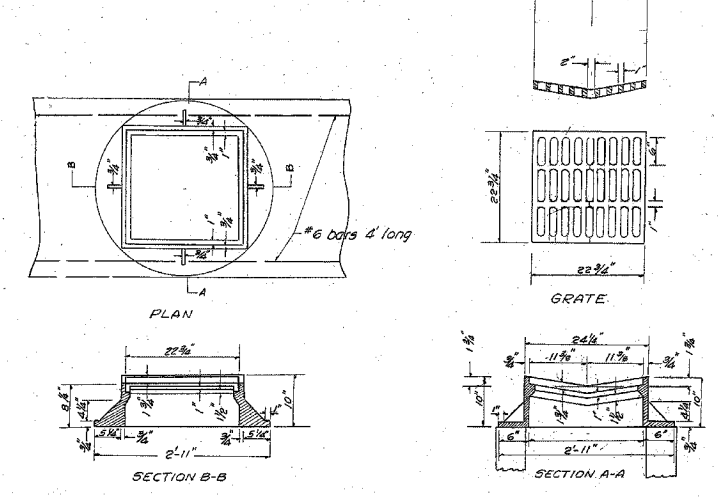
TYPICAL SECTION PROPOSED IMPROVEMENT

PAVEMENT DESIGN DATA (\* NORTH FIRST ST.) (\*\* COURT ST.)  
 A.D.T. = \*4050 \*\*1300, S.D.T. = \*4375 \*\*1500, P.V. = \*4185 \*\*1420, S.U. = \*175 \*\*75,  
 M.U. = \*15 \*\*5, CLASS STREET = \*II \*\*III, T.F. = \*0.5 \*\*0.5,  
 PAVEMENT STRUCTURE: P.C.C. PAVEMENT SPECIAL 8 IN. WITH INTEGRAL CURB NON-REINFORCED WITH TRANSVERSE JOINTS @ 15 FT. SPACING & 12" LIME MODIFIED SOIL SUBGRADE



TYPICAL SECTION EXISTING ROADWAY  
 N. FIRST ST. & COURT ST.

DETAIL TYPE M-9 FRAME AND GRATE  
 (EQUIVALENT TO MERMAR R-3508-B)

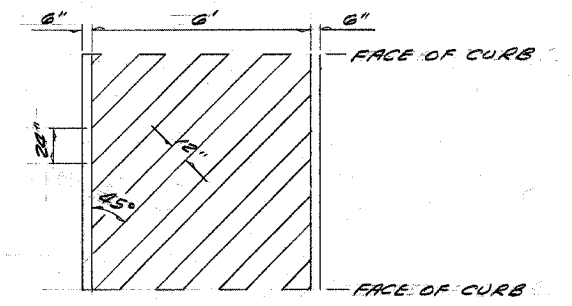


SUMMARY OF QUANTITIES

TOTAL ONLY	NORTH 1ST ST ONLY	COURT ST ONLY	UNIT	ITEM	5000 CODE
1		1	EACH	MANHOLES, TYPE A, 4' DIAMETER, TYPE M-9 FRAME AND GRATE	XX000663
3,860	1,978	1,882	SQ YD	PORTLAND CEMENT CONCRETE PAVEMENT 8" (SPECIAL) WITH INTEGRAL CURB	1R420129
1.43	1.43		CU YD	CONCRETE STEPS	Z0012450
5	3	2	EACH	STORM WATER CURB OPENING	XX000388
4	4		EACH	CONC STEP REMOVAL	X0300351
87	35	52	CU YD	EARTH EXCAVATION	20200100
92	92		CU YD	TRENCH BACKFILL	20800150
0.11	0.02	0.09	ACRE	SEEDING, CLASS I (SPECIAL)	25000900
236	191	45	SQ YD	SODDING, SPECIAL	25200700
4,040	2,090	1,950	SQ YD	PROCESSING LIME MODIFIED SOILS 12"	30200600
101	52	49	TON	LIME	31001500
75	38	37	TON	SUB-BASE GRANULAR MATERIAL, TYPE C	31101900
255	128	127	SQ YD	PORTLAND CEMENT CONCRETE DRIVEWAY PAVEMENT, 6 INCH	42300200
1,113	417	696	SQ FT	PORTLAND CEMENT CONCRETE SIDEWALK, 4 INCH	42400100
184		184	SQ FT	PORTLAND CEMENT CONCRETE SIDEWALK, 6 INCH	42400300
720	720		SQ FT	PORTLAND CEMENT CONCRETE SIDEWALK, 4 INCH, SPECIAL	42400420
3,496	1,785	1,711	SQ YD	PAVEMENT REMOVAL	44000100
246	108	138	SQ YD	DRIVEWAY PAVEMENT REMOVAL	44000200
121	121		FOOT	GUTTER REMOVAL	44000400
1,778	881	897	FOOT	COMBINATION CURB AND GUTTER REMOVAL	44000500
1,763	1,025	738	SQ FT	SIDEWALK REMOVAL	44000600
166	166		FOOT	PIPE HANDRAIL	51000105
135	135		FOOT	STORM SEWERS, CLASS A, TYPE 1 12"	550A0050
75	75		FOOT	STORM SEWERS, CLASS A, TYPE 1 15"	550A0070
14	14		FOOT	STORM SEWER REMOVAL 6"	55100200
140	140		FOOT	STORM SEWER REMOVAL 12"	55100500
36	36		FOOT	STORM SEWER REMOVAL 15"	55100700
20	12	8	FOOT	PIPE DRAINS 4"	60100905
4	4		FOOT	PIPE DRAINS 6"	60100915
3	3		EACH	INLETS, TYPE B, TYPE M-9 FRAME	60240350
1	1		EACH	MANHOLES TO BE ADJUSTED	60255500
1	1		EACH	INLETS TO BE RECONSTRUCTED WITH NEW TYPE II FRAME AND GRATE	60263900
1	1		EACH	REMOVING MANHOLES	60500040
3	3		EACH	REMOVING INLETS	60500060
1			L SUM	MOBILIZATION	67100100
1			L SUM	TRAFFIC CONTROL AND PROTECTION	70101700
524	152	372	FOOT	THERMOPLASTIC PAVEMENT MARKING - LINE 6"	78000400 *
617	186	431	FOOT	THERMOPLASTIC PAVEMENT MARKING - LINE 12"	78000600 *

THERMOPLASTIC PAVEMENT MARKING-LINE

	WHITE 6" LINE	WHITE 12" LINE
<b>NORTH FIRST STREET</b>		
A.R. STA. 0+98	76'	93'
S.S.R. STA. 3+43 TO 3+81	76'	93'
<b>COURT STREET</b>		
A.R. STA. 9+33	70'	77'
S.S.L. STA. 9+41 TO 9+82	82'	101'
S.S.R. STA. 9+40 TO 9+81	82'	101'
A.R. STA. 9+89	68'	75'
A.R. STA. 12+26	70'	77'
<b>TOTALS =</b>	<b>524'</b>	<b>617'</b>



TYPICAL LAYOUT OF CROSSWALKS

\* SPECIALTY ITEMS

CITY	FAIRFIELD	TOTAL SHEETS	8	SHEET NO.	3
SECTION	06-00044-00-RP	TO STA.	4100		
STA.	0193.7				

NORTH FIRST STREET

**PLAN**  
 SHEET NO. 06-00044-00-RP  
 DATE: 10/15/04  
 BY: [Signature]  
 CHECKED: [Signature]

**UTILITIES**

**WATER**  
 City of Fairfield  
 109 NE 2ND  
 Fairfield, IL 62837  
 618-842-7015

**TELEPHONE**  
 VERIZON  
 225 E. Chestnut  
 BOX 460  
 Olney, IL 62450  
 618-395-6189

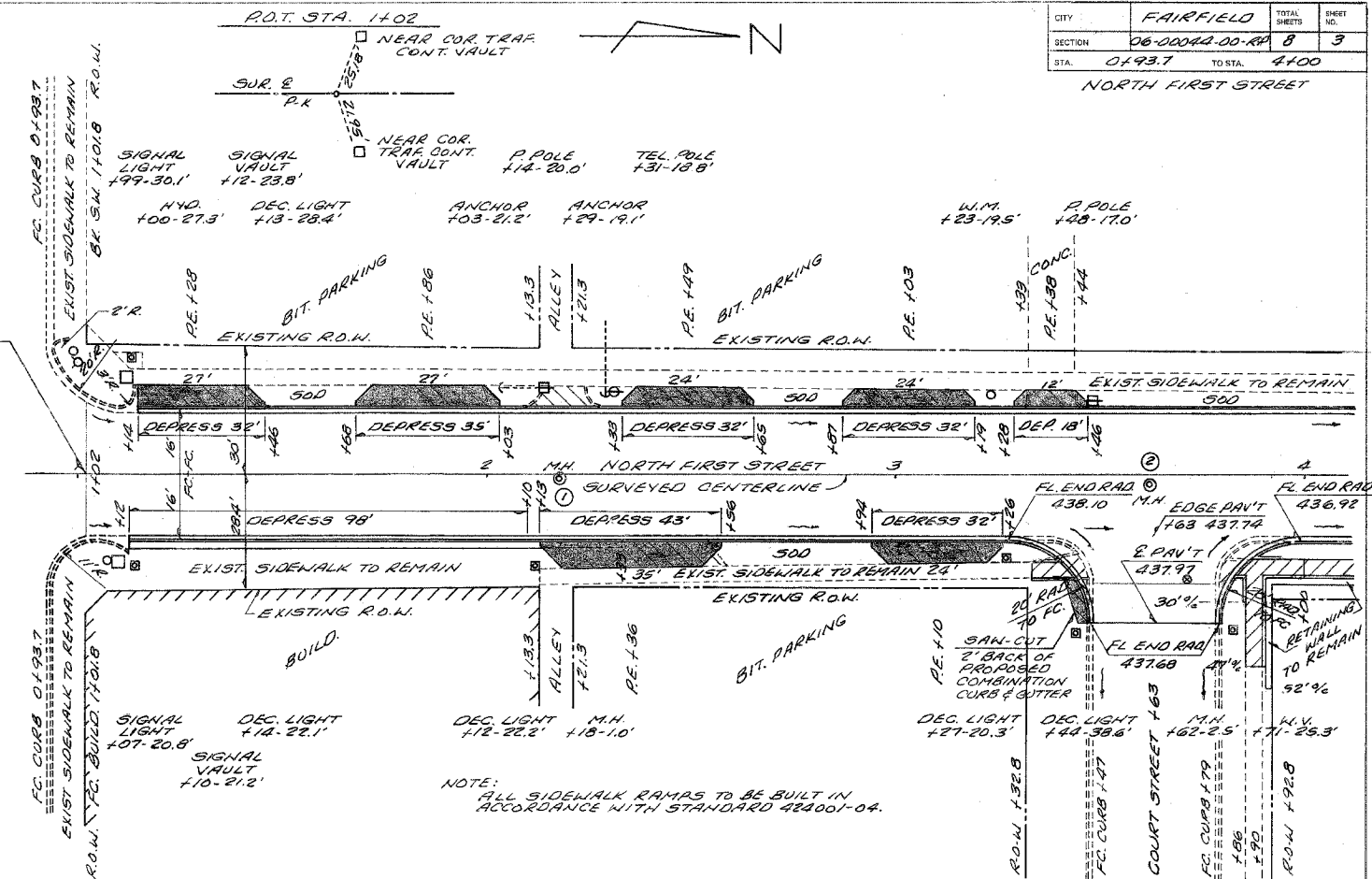
**ELECTRIC**  
 City of Fairfield  
 109 NE 2ND  
 Fairfield, IL 62837  
 618-842-3445

**GAS**  
 City of Fairfield  
 1400 ML. Vernon Rd  
 Fairfield, IL 62837  
 618-842-9736

**SANITARY SEWER**  
 City of Fairfield  
 109 NE 2ND  
 Fairfield, IL 62837  
 618-842-7015

**PROFILE**  
 SHEET NO. 06-00044-00-RP  
 DATE: 10/15/04  
 BY: [Signature]  
 CHECKED: [Signature]

SECTION 06-00044-00-RP  
 BEGINS STA. 1402  
 N.E. FIRST STREET



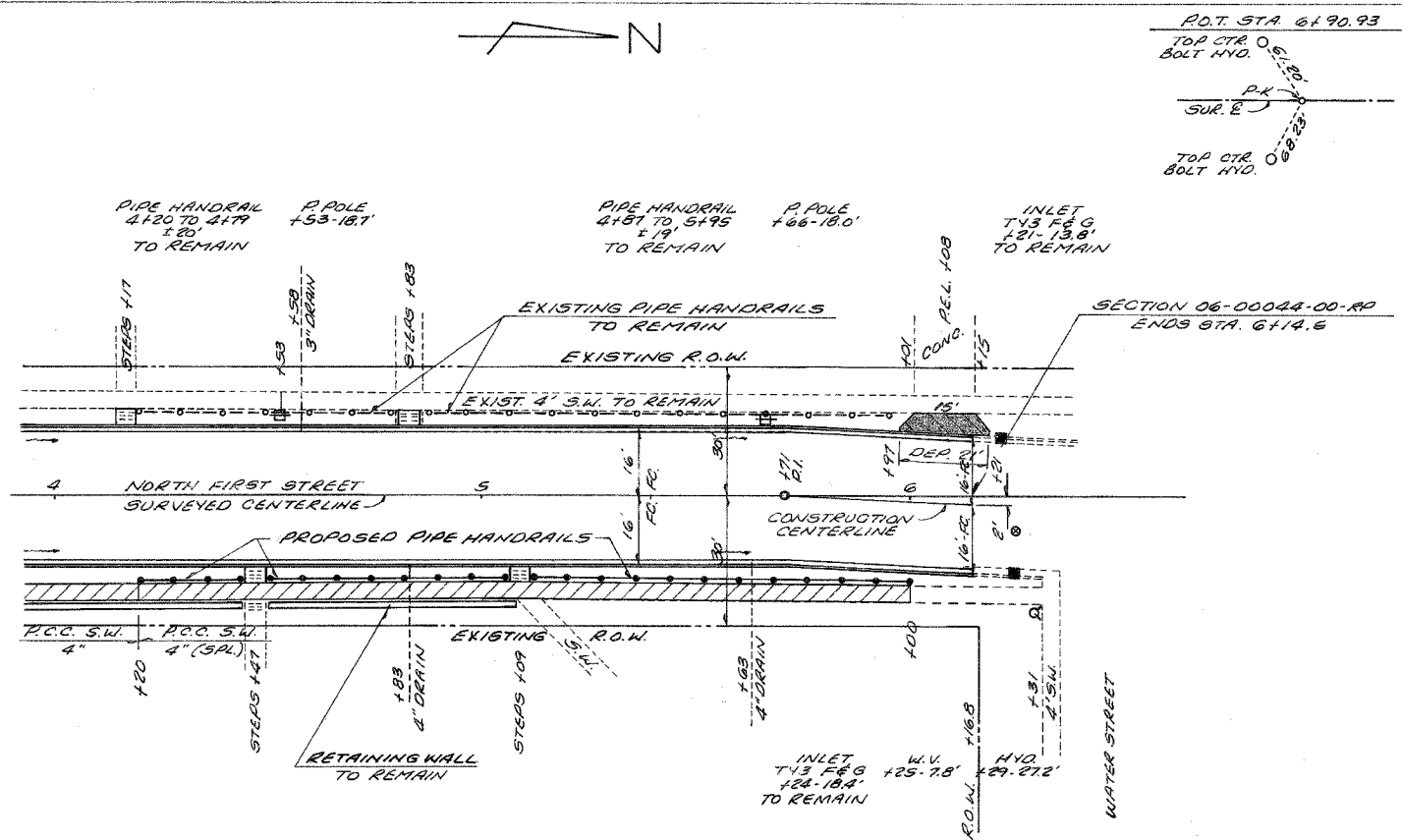
NOTE: ALL SIDEWALK RAMPS TO BE BUILT IN ACCORDANCE WITH STANDARD 424001-04.

DESCRIPTION	QUANTITY	UNIT	PROPOSED ELEVATION	EXISTING ELEVATION	GRADE
COMBINATION CURB & GUTTER TO REMAIN	LT STA 1402-1414 RT STA 1402-1412				
P.C. CONCRETE SIDEWALK 4"	RT 1412 TO 2113 = 100 SQ. FT. RT 3137 TO 3143 = 24 " RT 3184 TO 4100 = 169 "				
P.C. CONCRETE DRIVEWAY PAVT 6"	LT 1428 = 17.0 SQ. YD. LT 1436 = 17.7 " RT 2135 = 28.8 " LT 2124 = 15.1 " RT 3103 = 14.5 " RT 3140 = 16.1 " LT 3138 = 2.8 " RT 3149 = 3.1 "				
PROCESSING LIME MODIFIED SOILS 12"	STA 1402-6114.5 = 2090 SQ. YD.				
LIME	STA 1402-6114.5 = 52 TONS				
SEEDING, CLASS 1 (SPECIAL)	LT & RT STA 1402-4100 = 0.02 ACRE				
SODDING (SPECIAL)	LT & RT STA 410-6114.5 = 191 SQ. YD.				
P.C.C. PAVEMENT 8" SPECIAL W/ INTEGRAL CURB	STA 1402-6114.50 = 1978 SQ. YD.				
EARTHWORK SCHEDULE (STA 1402-6114.6)	EARTH EXCAVATION = 35 CU. YD. EMBANKMENT = 34 CU. YD.				
SUB-BASE GRANULAR MATERIAL, TYPE C	VARIOUS LOCATIONS NORTH FIRST ST. = 38 TON				
P.C. CONCRETE SIDEWALK REMOVAL	RT 3137 TO 3141 = 45 SQ. FT. RT 3177 TO 4100 = 180 SQ. FT.				
COMBINATION CURB & GUTTER REMOVAL	LT 1414 TO 4100 = 286 FT. RT 2133 TO 3141 = 129 " RT 3177 TO 4100 = 37 "				
DRIVEWAY PAVT REMOVAL	LT 1428 = 16.5 SQ. YD. LT 1436 = 12.8 " RT 2135 = 26.5 " LT 2124 = 11.1 " RT 3103 = 10.0 " RT 3140 = 12.6 " LT 3138 = 5.4 " RT 3149 = 8.9 "				
CONCRETE GUTTER REMOVAL	RT 1412 TO 2133 = 121 FT.				
PAVEMENT REMOVAL	LT & RT 1402 TO 4100 = 1070 SQ. YD.				
DRAINAGE STRUCTURES	10' RT 2118 SAN. MANHOLE TO REMAIN 438.85 25' RT 3182 SAN. MANHOLE TO REMAIN 438.00				

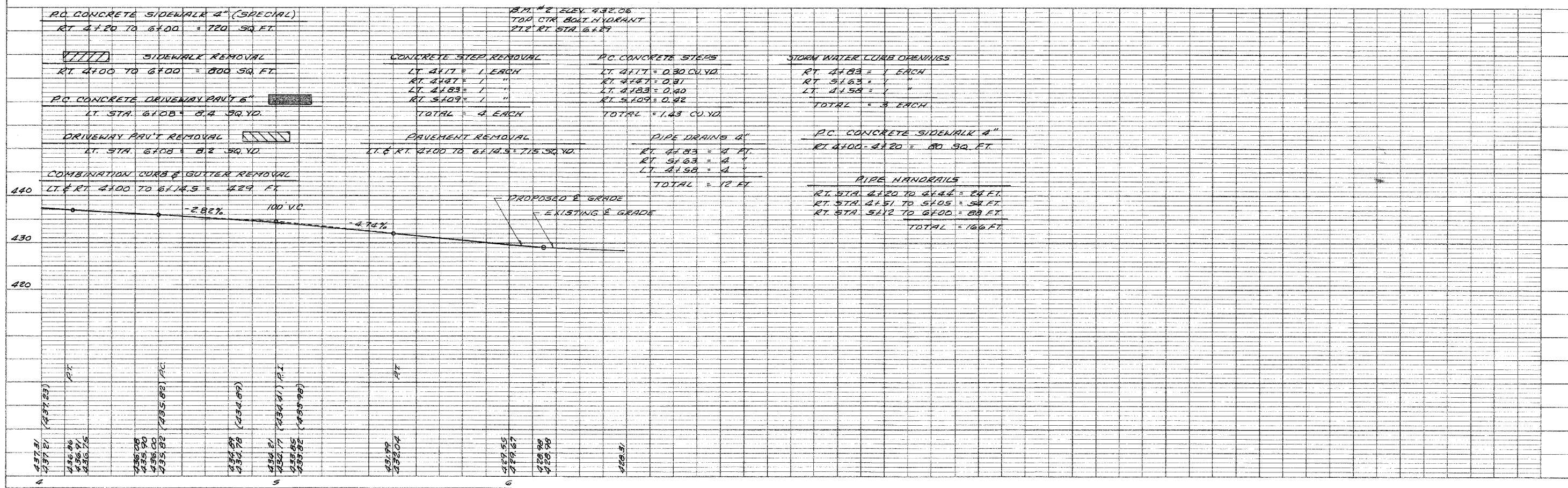
CITY	FAIRFIELD	TOTAL SHEETS	8	SHEET NO.	4
SECTION	06-00044-00-RP				
STA.	4100	TO STA.	6145		

NORTH FIRST STREET

**PLAN**  
 SUBMITTED BY: [ ]  
 DATE: [ ]  
 NOTE BOOK: [ ]  
 ADJUSTMENT CHECKED: [ ]  
 ST. OF WAY CHECKED: [ ]  
 No. [ ]



**PROFILE**  
 SUBMITTED BY: [ ]  
 DATE: [ ]  
 NOTE BOOK: [ ]  
 ADJUSTMENT CHECKED: [ ]  
 SURFACE SOLUTIONS CHECKED: [ ]  
 No. [ ]

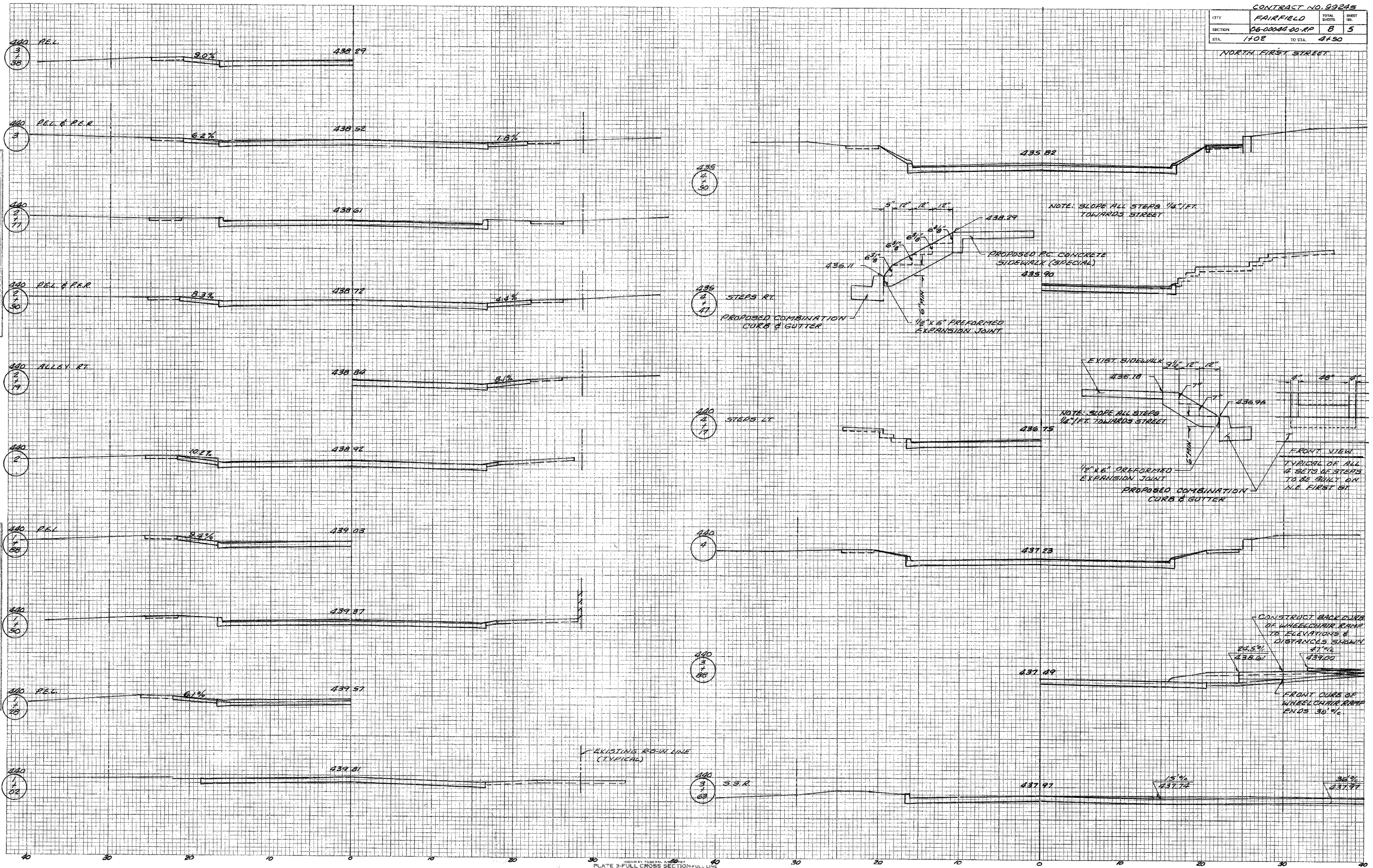




CONTRACT NO. 99245		
CITY	FAIRFIELD	TOTAL SHEETS
SECTION	06-00004-00-RP	8 5
STA.	1+02	TO STA. 4+50
NORTH FIRST STREET		

FINAL SURVEY  
 SURVEY PLOTTING  
 NOTE BOOK  
 AREAS UNDESIGNED

ORIGINAL SURVEY  
 SURVEY PLOTTING  
 NOTE BOOK  
 AREAS UNDESIGNED



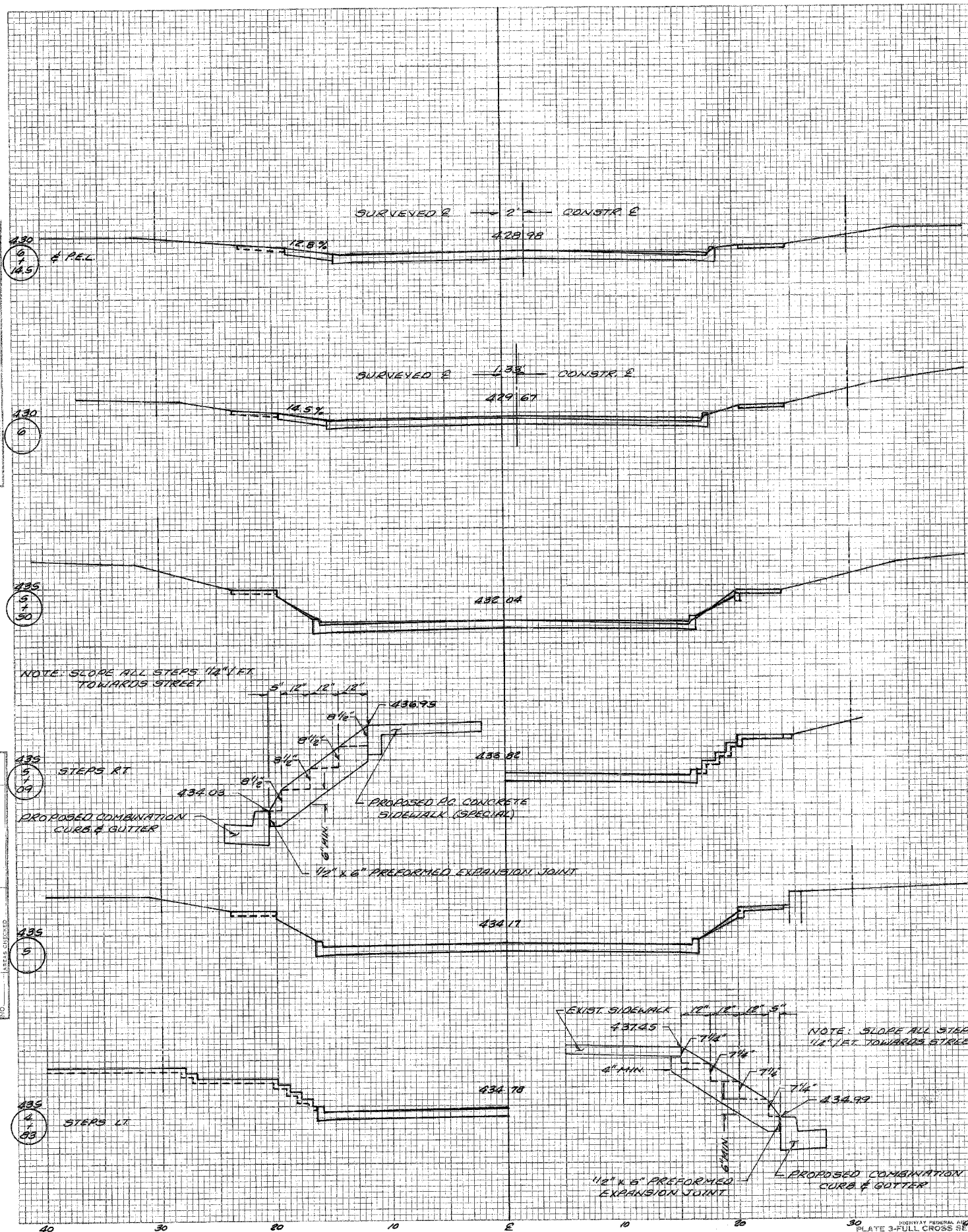


CITY	FAIRFIELD	TOTAL SHEETS	SHEET NO.
SECTION	06-00044-00-RP	8	6
STA.	4+83	TO STA.	6+12.5

NORTH FIRST STREET

DATE: \_\_\_\_\_  
 BY: \_\_\_\_\_  
 CHECKED: \_\_\_\_\_  
 APPROVED: \_\_\_\_\_  
 TITLE: \_\_\_\_\_  
 ORIGINAL SURVEY PLOTTER: \_\_\_\_\_  
 NOTE BOOK: \_\_\_\_\_  
 NO. \_\_\_\_\_

DATE: \_\_\_\_\_  
 BY: \_\_\_\_\_  
 CHECKED: \_\_\_\_\_  
 APPROVED: \_\_\_\_\_  
 TITLE: \_\_\_\_\_  
 ORIGINAL SURVEY PLOTTER: \_\_\_\_\_  
 NOTE BOOK: \_\_\_\_\_  
 NO. \_\_\_\_\_

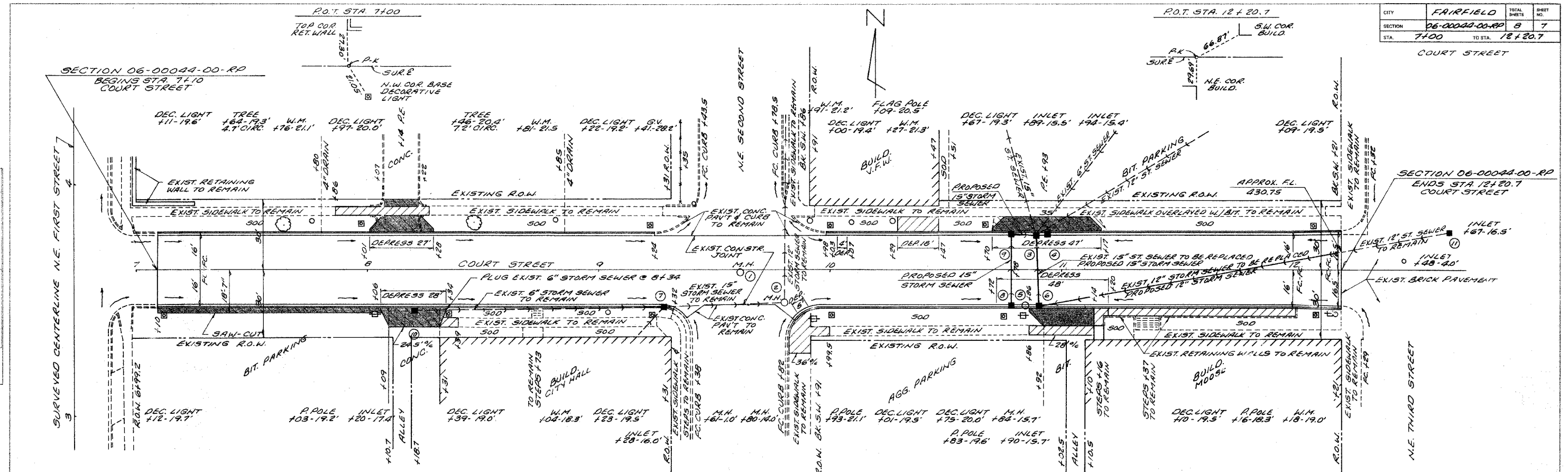


NOTE: SLOPE ALL STEPS 1/2" LET TOWARDS STREET

NOTE: SLOPE ALL STEPS 1/2" LET TOWARDS STREET

CITY	FAIRFIELD	TOTAL SHEETS	8	SHEET NO.	7
SECTION	06-00044-00-RP	NO. OF SHEETS	8		
STA.	7+00	TO STA.	12+20.7		

COURT STREET



NOTE: ALL SIDEWALK RAMP TO BE BUILT IN ACCORDANCE WITH STANDARD 424001-04.

**PLAN**  
SURVEYED  
POSTED  
RECORDED  
FILED  
BY ORDER OF  
THE BOARD OF SUPERVISORS  
COUNTY OF FAIRFIELD  
CALIFORNIA  
NO. \_\_\_\_\_

**PROFILE**  
SURVEYED  
POSTED  
RECORDED  
FILED  
BY ORDER OF  
THE BOARD OF SUPERVISORS  
COUNTY OF FAIRFIELD  
CALIFORNIA  
NO. \_\_\_\_\_

TRENCH BACKFILL		P.C. CONCRETE DRIVEWAY PAVEMENT		PIPE DRAINING 4" 6"		P.C. CONCRETE SIDEWALK 4"		STORM SEWER TY 1		DRAINAGE STRUCTURES		GRATE INVERT	
3.0' x 1' ELEV. 438.38		RT 7+10 TO 8+07 = 21.3 SQ. YD.		LT 7+80 = 8+07 = 8.27 SQ. FT.		LT 7+86 = 8+07 = 8.21 SQ. FT.		12" 15"	1	12" 15" 433.31			
N.W. COR. DECORATIVE LIGHT		RT 8+20 = 22.3 "		LT 8+23 = 8+27 = 4.0 "		RT 8+23 = 8+27 = 4.0 "		" 30"	2	14" 0" RT 9+80 MANHOLE TO REMAIN	432.75		
BASE 12" RT. STA 7+12		LT 10+93 = 23.9 "		LT 8+85 = 4.0 "		LT 10+83 = 8+39 = 2.4 "		" 30"	3	16" 0" LT 10+89 MANHOLE 4" DIA. W/FLAT. 56" DIA	431.48	425.89 (18" DIA)	
		RT 11+01 = 20.9 "				RT 9+83 = 9+99 = 16.0 "		" 9"	4	16" 0" LT 10+94 INLET TO BE REMOVED			
		LT 8+14 = 32.6 "				LT 10+29 = 10+47 = 17.8 "		" 6"	5	16" 0" RT 10+90 MANHOLE TO BE ADJUSTED	431.55		
						RT 10+86 = 10+92 = 6.0 "		" 6"	6	16" 0" RT 10+90 INLET T.Y. 9 F&G	431.49	425.90 (N.E.E.)	
						RT 11+20 = 12+01 = 2.81 "		" 6"	7	14" 0" RT 9+28 INLET TO BE RECONSTRUCTED	433.66	429.16	
		TOTAL = 127.0 SQ. YD.		TOTAL = 2 EACH		TOTAL = 69.6 SQ. FT.		TOTALS = 135' 75"		16" 0" RT 10+78 INLET T.Y. 9 F&G	431.45	427.25	
								" 12" 15"	8	18" 0" LT 10+78 INLET T.Y. 9 F&G	431.45	427.25	
								" 6"	9	15.7" LT 10+90 INLET TO BE REMOVED			
								" 6"	10	17.4" RT 8+20 INLET TO BE REMOVED			
								" 10"	11	14.5" LT 12+67 INLET TO REMAIN			
								TOTALS = 14' 140' 36"					

COMBINATION CURB & GUTTER REMOVAL	PC.C. PAVEMENT & SPECIAL INTEGRAL CURB	PROCESSING LIME MODIFIED SOILS, 12"	PAVEMENT REMOVAL	PC. CONCRETE SIDEWALK 6"	STORM SEWER REMOVAL	SIDEWALK REMOVAL
LT & RT 7+10 TO 12+20.7 = 897 FT	STA. 7+10 - 12+20.7 = 1882 SQ. YD	STA. 7+10 - 12+20.7 = 1950 SQ. YD	7+10 TO 12+20.7 = 1711.5 SQ. YD	LT 8+27 = 8+27 = 0.0 SQ. FT.	6" 12" 15"	LT 7+86 - 8+07 = 5.21 SQ. FT.
		90' V.C.	STA. 7+10 - 12+20.7 = 49 TON	RT 10+78 = 10+78 = 0.0 "	" 6"	LT 8+23 - 8+27 = 4.0 "
				RT 11+14 = 11+20 = 6.0 "	" 10"	RT 8+23 - 8+27 = 4.0 "
				TOTAL = 18.0 SQ. FT.	TOTALS = 14' 140' 36"	RT 9+83 - 9+99 = 16.0 "

EARTHWORK SCHEDULE		SUB-BASE GRANULAR MATERIAL, TYPE C	
EARTH EXCAVATION = 52 CU. YD.		VARIOUS LOCATIONS COURT STREET = 37 TON	
EMBANKMENT = 59 CU. YD.			

SEEDING, CLASS 1 (5000/AC)	
LT STA 7+10 - 12+20.7 = 0.06 ACRE	
RT STA 9+21 - 12+20.7 = 0.03 "	
TOTAL = 0.09 ACRE	

SEEDING (SPECIAL)	
RT STA 8+31 - 9+32 = 4.5 SQ. YD.	

PLATE 15 SINGLE PLAN AND PROFILE - FULL LINE  
NATIONAL ARCHITECTURAL  
1234567890



CITY	FAIRFIELD	TOTAL SHEETS	8	SHEET NO.	8
SECTION	06-00064-00-RP	TO STA.	12+20.7	COURT ST.	
STA.	7+0				

FINAL SURVEY  
 DATE: 11/15/01  
 BY: [Signature]  
 CHECKED: [Signature]  
 TITLE: [Signature]  
 PROJECT: [Signature]

ORIGINAL SURVEY  
 DATE: 11/15/01  
 BY: [Signature]  
 CHECKED: [Signature]  
 TITLE: [Signature]  
 PROJECT: [Signature]

