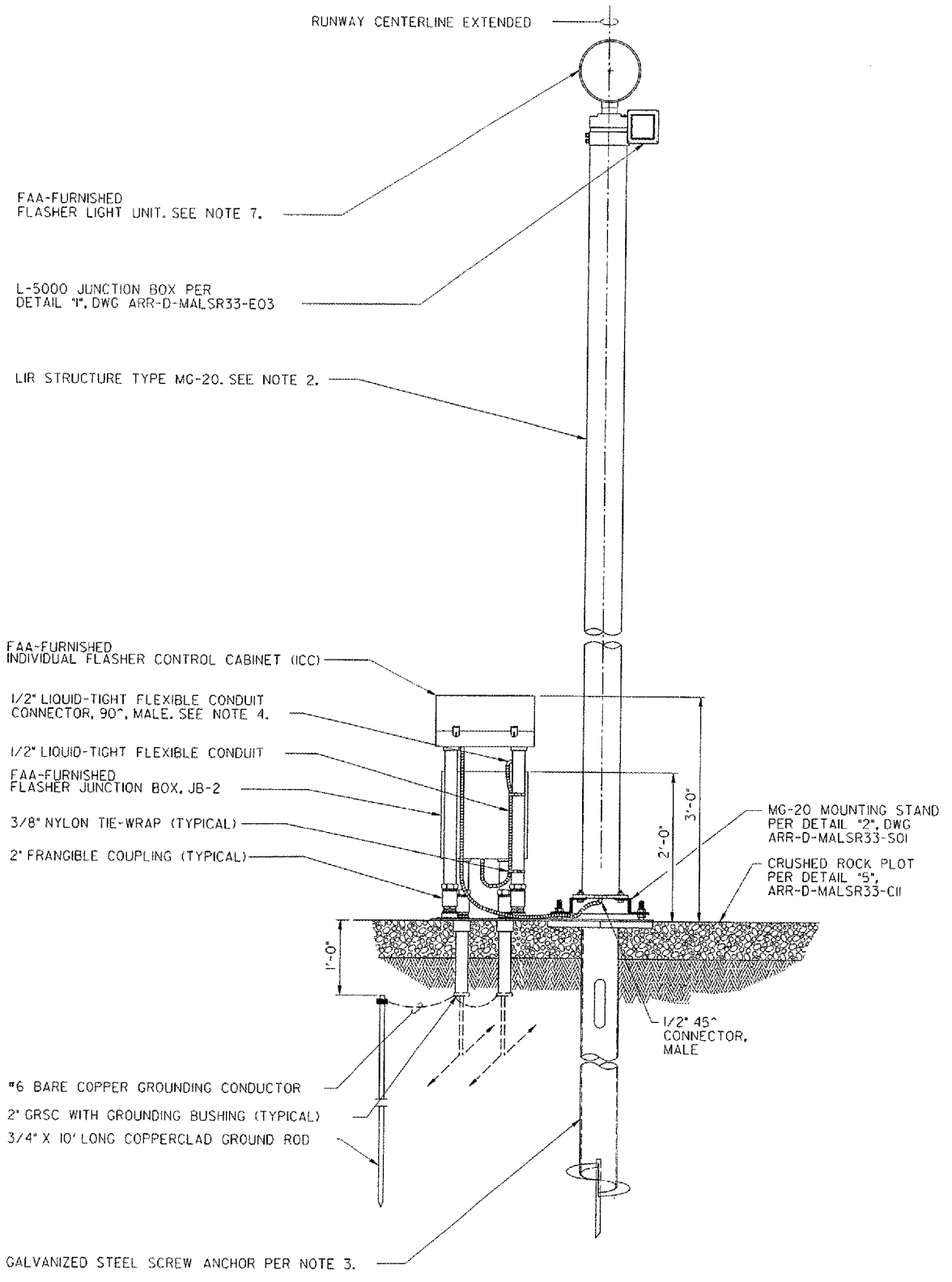


THIS DRAWING PRODUCED BY THE GREAT LAKES REGION MICROSTATION SYSTEM

8 7 6 5 4 3 2 1

H  
G  
F  
E  
D  
C  
B  
A

H  
G  
F  
E  
D  
C  
B  
A



**A SECTION**  
ELEVATION VIEW  
SCALE IN FEET

FLASHER POWER AND CONTROL CABLES IN COMMON TRENCH D.E.B. FROM FLASHER JUNCTION BOX AT PREVIOUS LIGHT STATION OR MALSR EQUIPMENT SHELTER PER DWG ARR-D-MALSR33-C02.

1/0 AWG BARE COPPER GUARD WIRE  
3/4" X 10' LONG COPPERCLAD GROUNDING ROD, SEE NOTE 5.  
6 AWG BARE COPPER GROUNDING CONDUCTOR, SEE NOTE 8.

2" GALVANIZED RIGID STEEL CONDUIT COUPLING WELDED TO EDGE OF MOUNTING PLATE (FLUSH WITH TOP OF MOUNTING PLATE)

2" GALVANIZED FLOOR FLANGE, WELDED TO PLATE (TYPICAL)

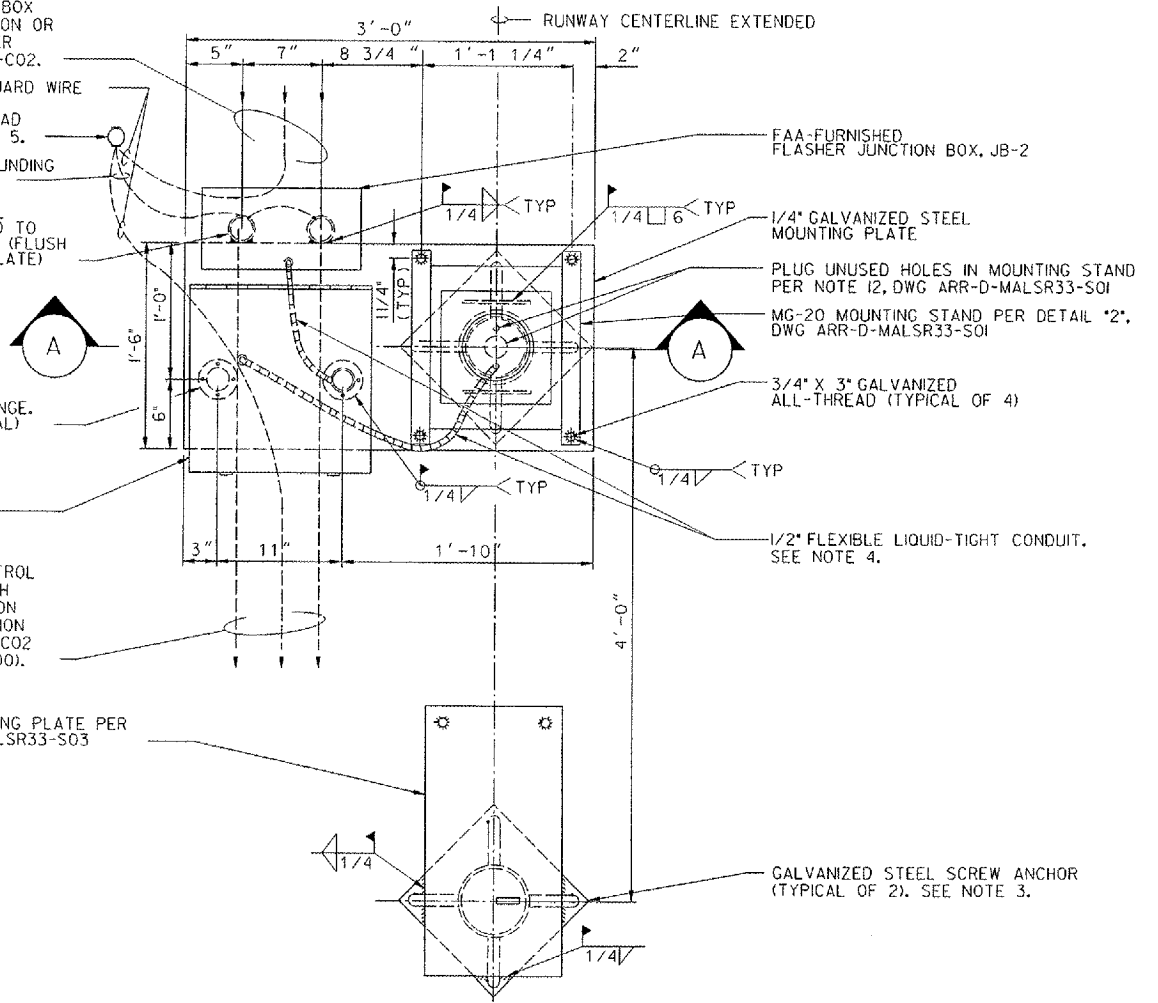
FAA-FURNISHED INDIVIDUAL FLASHER CONTROL CABINET (ICC)

FLASHER POWER AND CONTROL CABLES IN COMMON TRENCH D.E.B. TO FLASHER JUNCTION BOX AT NEXT LIGHT STATION PER DWG ARR-D-MALSR33-C02 (EXCEPT AT STATION 24+00).

GALVANIZED STEEL MOUNTING PLATE PER DETAIL "2", DWG ARR-D-MALSR33-S03

**NOTES:**

1. SEE DWG ARR-D-MALSR33-C01 FOR LAMP CENTERLINE AND FOUNDATION TOP ELEVATIONS.
2. LIR STRUCTURES SHALL PIVOT TOWARD THE RUNWAY THRESHOLD. SEE NOTE 1, DWG ARR-D-MALSR33-S01 FOR LIR TUBE CUTTING LENGTH CALCULATION AND MG-20 LIR STRUCTURE ASSEMBLY DETAILS
3. ALL SCREW ANCHOR FOUNDATIONS SHALL CONSIST OF A.B. CHANCE "INSTANT" FOUNDATIONS. CAT. NO. CT112-0262. SEE SPECIFICATION FAA-GL-918C, SECTION 13B FOR INSTRUCTIONS REGARDING INSTALLATION OF THE ANCHOR.
4. DRILL HOLE IN SIDE OF 2" EMT CONDUIT LEG OF ICC AND INSTALL 90° 1/2" FLEX CONDUIT CONNECTOR WITH 1/2" FLEX CONDUIT FROM JUNCTION BOX. ROUTE POWER AND CONTROL CABLES THROUGH FLEX CONDUIT, INTO EMT LEG AND INTO ICC. SEAL PENETRATION USING SILICONE SEALER.
5. ALL CONNECTIONS TO GROUNDING RODS SHALL BE MADE USING EXOTHERMIC WELDS PER SPECIFICATIONS.
6. FOUNDATION SHALL BE CONSTRUCTED SUCH THAT LIR MAST IS CENTERED AT THE RUNWAY STATION SHOWN ON DWG ARR-D-MALSR33-C02.
7. SEE DWG ARR-D-MALSR33-E03 FOR FLASHER WIRING AND LAMPHOLDER INSTALLATION DETAILS.



**PLAN**  
FOUNDATION LAYOUT FOR MALSR FLASHER

**1 DETAIL**  
SCALE IN FEET

CONTRACTOR SHALL SUBMIT REQUESTS FOR SUBSTITUTION OF SPECIFIC MANUFACTURER'S ITEMS SHOWN PER PARAGRAPH 1 OF THE SPECIAL SPECIFICATIONS.

SHEET 32 OF 67

DEPARTMENT OF TRANSPORTATION  
FEDERAL AVIATION ADMINISTRATION  
GREAT LAKES REGION CHICAGO, ILLINOIS

MALSR  
FOUNDATION DETAILS FOR FLASHER  
AT STATION 16+80, 18+60, AND 20+40

AURORA AURORA MUNICIPAL AIRPORT IL

REVIEWED BY	SUBMITTED BY	APPROVED BY
DESIGNED	TAB	PLATFORM MGR. CLELAND MICHEEL
DRAWN	TAB	ISSUED BY CHICAGO HAS IMPLEMENTATION CENTER
CHECKED	EGS	DATE 02/27/2006
REV	DATE	DESCRIPTION

ARR-D-MALSR33-C09

R:\Aurora\0422504.Dwg\Sheet\FAA\_45\_D01\1.dwg 5:10:06 AM ARR-D-MALSR33-C09.dwg  
 5/10/2006 5:18:48 PM RUMBLE  
 48727

8 7 6 5 4 3 2 1

SHEET OF