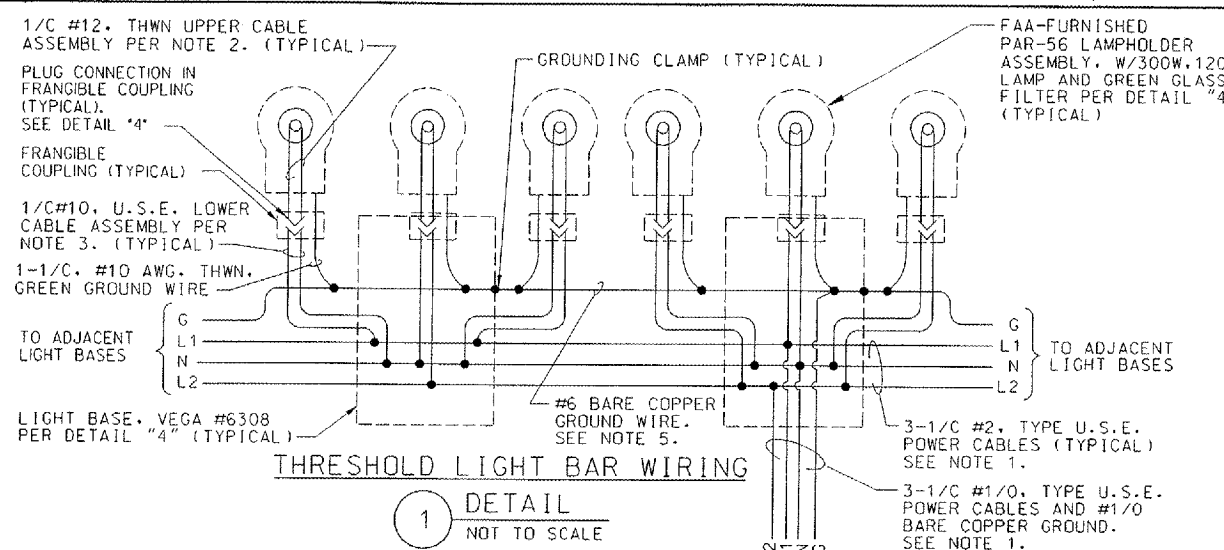


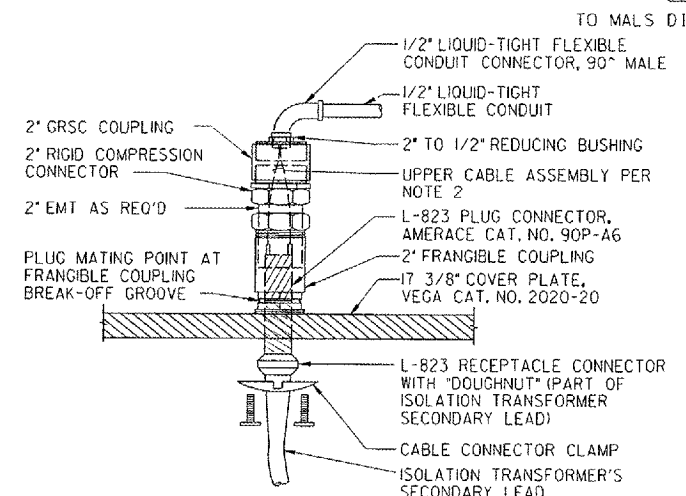
THIS DRAWING PRODUCED ON THE GREAT LAKES REGION MODIFICATION SYSTEM



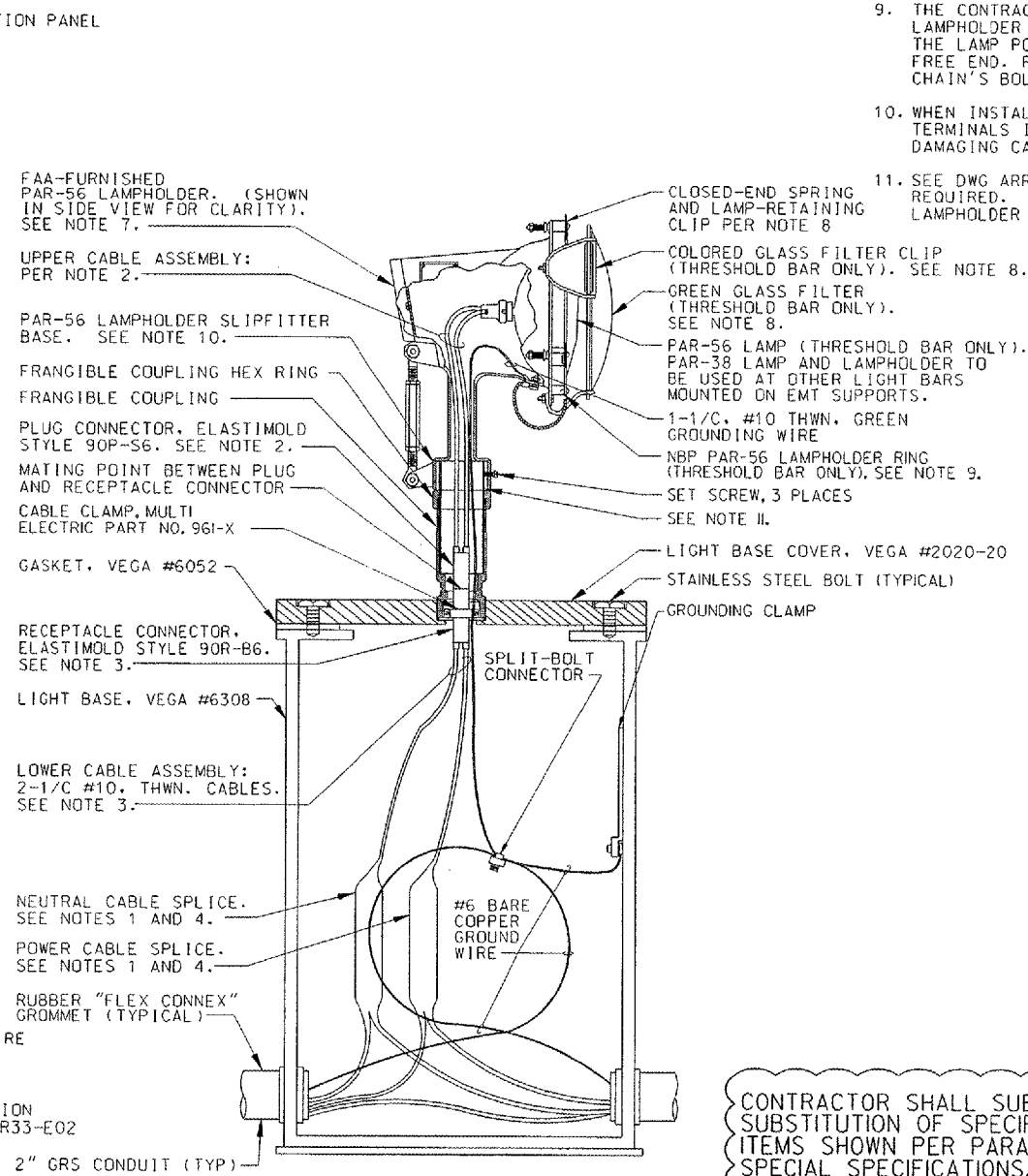
1 DETAIL NOT TO SCALE

NOTES:

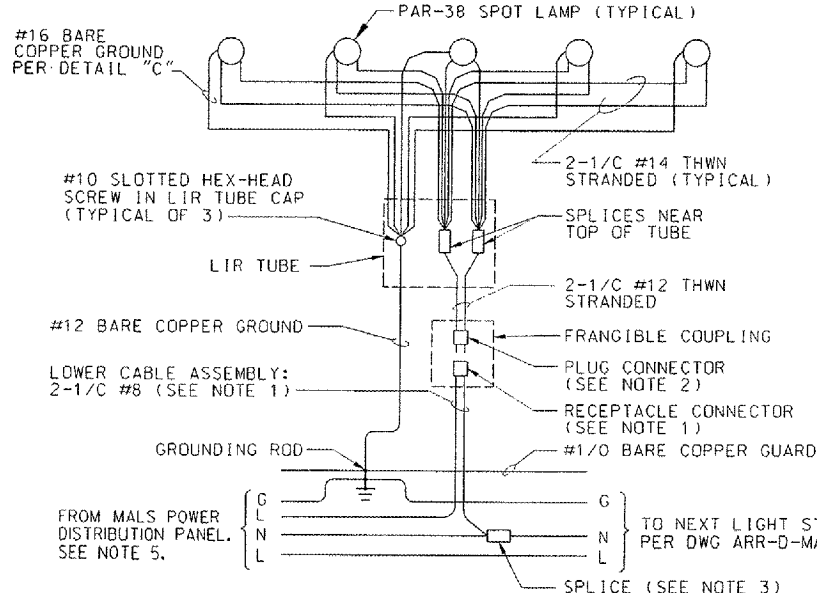
1. EACH CURRENT-CARRYING CABLE MAKING A CONNECTION IN THE LIGHT BASE SHALL HAVE A MINIMUM 4' SLACK LOOP COILED NEATLY INSIDE THE LIGHT BASE. (SLACK LOOP NOT REQUIRED FOR CABLE PASSING THROUGH LIGHT BASE WITHOUT CONNECTION).
2. THE UPPER CABLE ASSEMBLY SHALL BE 2-1/C #14 STRANDED THWN CABLES AND ELASTIMOLD WATERTIGHT PLUG CONNECTOR, STYLE 90P-S8 FOR LIGHT BARS MOUNTED ON EMT SUPPORTS (EXCEPT THRESHOLD BAR). AT THE THRESHOLD BAR AND FOR STEADY-BURNING LAMPS MOUNTED ON LIR TOWERS, THE UPPER CABLE ASSEMBLY SHALL BE 2-1/C #12 STRANDED THWN CABLES AND ELASTIMOLD WATERTIGHT PLUG CONNECTOR, STYLE 90P-S6.
3. THE LOWER CABLE ASSEMBLY SHALL BE 2-1/C #10 TYPE U.S.E. CABLES WITH ELASTIMOLD RECEPTACLE CONNECTOR, STYLE #90R-B6 AT LIGHT BARS MOUNTED ON EMT SUPPORTS (INCLUDING THE THRESHOLD BAR). FOR STEADY-BURNING LIGHT BARS MOUNTED ON LIR TOWERS, THE LOWER CABLE ASSEMBLY SHALL BE 2-1/C #8 TYPE U.S.E. CABLES WITH ELASTIMOLD RECEPTACLE CONNECTOR, STYLE #90R-C4.
4. CONNECTIONS OF #10 CABLES TO #2 CABLES ARE MADE WITH BURNDY CAT. NO. YPC2A8U STREET LIGHTING TAPS. CONNECTIONS OF #2 CABLES TO 1/0 CABLES, IN FEED-THROUGH SPLICES ONLY, ARE MADE WITH BURNDY CAT. NO. YC26C2 COPPER CRIMPITS. SPLICE BODIES ARE MADE WITH 3M SCOTCHCAST MULTI-MOLD SPLICING KITS, 3M NO. 85-16.
5. ALL CONNECTIONS TO GROUNDING RODS SHALL BE MADE USING EXOTHERMIC WELDS PER SPECIFICATIONS.
6. ALL THREADS ON BOLTS SHALL BE COATED WITH ANTI-SEIZE COMPOUND.
7. A SILICONE RUBBER INSULATOR DISK (GFM) SHALL BE SECURELY INSTALLED BETWEEN THE LAMPHOLDER AND THE PAR-56 LAMP (THRESHOLD BAR ONLY).
8. EACH GREEN GLASS FILTER, WHICH ARE FAA-FURNISHED, (THRESHOLD BAR ONLY) IS SECURED WITH THREE STAINLESS STEEL FILTER CLIPS, THE CONTRACTOR SHALL BEND THE FILTER CLIPS SUCH THAT THEY HOLD THE FILTER SECURELY WHEN THEY ARE BOLTED.
9. THE CONTRACTOR SHALL FURNISH AND INSTALL AN NBP PAR-56 LAMPHOLDER RING ON EACH PAR-56 LAMPHOLDER (THRESHOLD BAR ONLY). THIS RING FITS OVER THE LAMP-RETAINING CLIPS, AND HOLDS THE LAMP POSITIVELY IN PLACE. THE RING COMES WITH AN ATTACHED CHAIN HAVING A SS BOLT AT THE FREE END. REPLACE THE LAMPHOLDER'S EXISTING STAINLESS STEEL GROUNDING BOLT WITH THE CHAIN'S BOLT.
10. WHEN INSTALLING PAR-38 LAMPHOLDER, FEED PIGTAIL ENDS OF CABLE INTO LAMPHOLDER AND CONNECT TO TERMINALS IN LAMPHOLDER SOCKET. USE CARE TO PREVENT THE SOCKET RETENTION BOLTS FROM DAMAGING CABLE INSULATION.
11. SEE DWG ARR-D-MALSR33-C01 DRAWING FOR LAMP CENTERLINE ELEVATION TO DETERMINE LENGTH OF 2" EMT REQUIRED. AT THE THRESHOLD BAR, THE CONDUIT SHALL BE SIZED SO THAT THE BOTTOM OF THE PAR-56 LAMPHOLDER BASE IS IN CONTACT WITH THE TOP OF THE FRANGIBLE COUPLING.



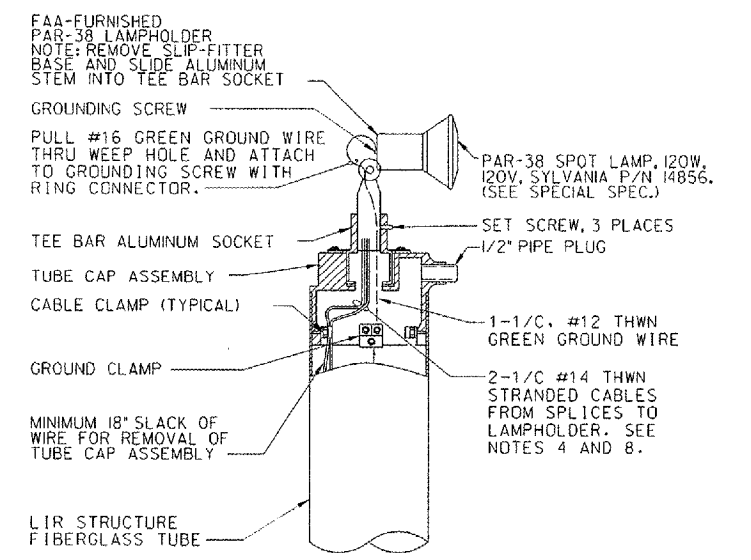
2 DETAIL NOT TO SCALE



4 DETAIL NOT TO SCALE



3 DETAIL NOT TO SCALE



5 DETAIL NOT TO SCALE

TYPICAL PAR-38 LAMPHOLDER MOUNTED ON LIR TOWER

CONTRACTOR SHALL SUBMIT REQUESTS FOR SUBSTITUTION OF SPECIFIC MANUFACTURER'S ITEMS SHOWN PER PARAGRAPH 1 OF THE SPECIAL SPECIFICATIONS.

DEPARTMENT OF TRANSPORTATION
FEDERAL AVIATION ADMINISTRATION
GREAT LAKES REGION CHICAGO, ILLINOIS

MALSR

WIRING DIAGRAMS FOR
STEADY-BURNING LIGHT BARS
RUNWAY 33

REVIEWED BY	SUBMITTED BY	APPROVED BY
DESIGNED BY	ISSUED BY	PLATFORM MGR.
TAD	CHICAGO NAS	CLELAND MICHEEL
DRAWN	IMPLEMENTATION	DATE
	CENTER	02/27/2006
CHECKED	EGS	DRAWING NO.
		ARR-D-MALSR33-E01

REV	DATE	DESCRIPTION	CON	REQ'D DATE	APPR

K:\Aurora\0428501\0428501.dwg, Sheets V.F.A. U.S. DASH, CNT mod. 5-10-06, APR-D-MALSR33-E01.dwg
5/10/2006 5:21:11 PM THANE
PRT/ST