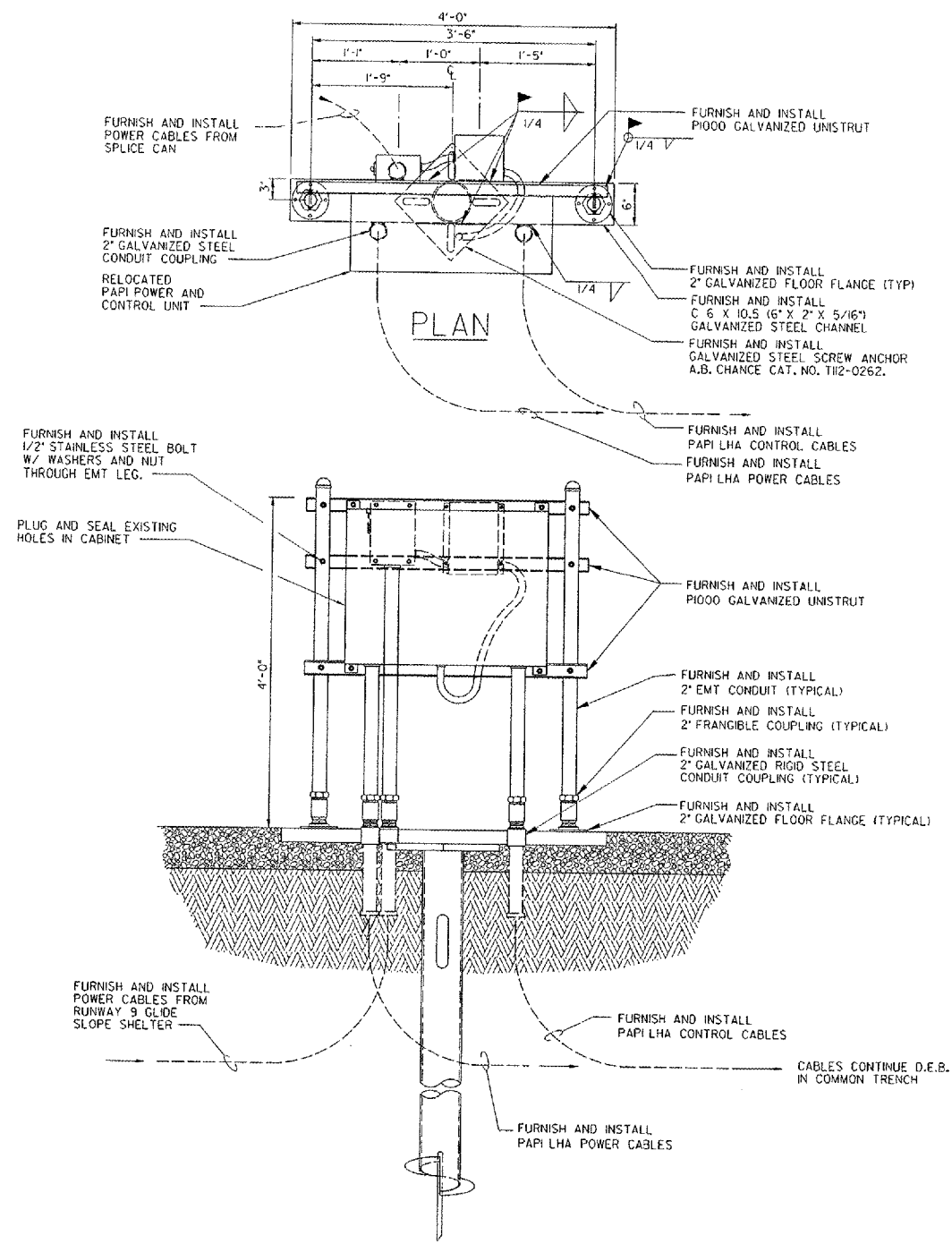
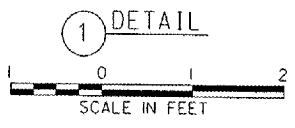


THIS DRAWING PRODUCED BY THE GREAT LAKES REGION MICROSTATION SYSTEM

K:\Aurora\01282014\Drawings\Sheet\AA LS DD's\ CAT mod. 5-10-06\MRP-D-P4133-S02.dgn
5/10/2006 3:25:07 PM BHWKES
AR729



PLAN
PAPI POWER AND
CONTROL RACK DETAILS



CONTRACTOR SHALL SUBMIT REQUESTS FOR SUBSTITUTION OF SPECIFIC MANUFACTURER'S ITEMS SHOWN PER PARAGRAPH 1 OF THE SPECIAL SPECIFICATIONS.

SHEET 60 OF 67

DEPARTMENT OF TRANSPORTATION FEDERAL AVIATION ADMINISTRATION GREAT LAKES REGION		CHICAGO, ILLINOIS	
PAPI			
EQUIPMENT RACK DETAILS RUNWAY 33			
AURORA		AURORA MUNICIPAL AIRPORT	
REVIEWED BY	SUBMITTED BY	APPROVED BY	
DESIGNED	ISSUED BY	PLATFORM MGR.	CLELAND MICHEEL
DRAWN	CHICAGO NAS	DATE	02/27/2006
CHECKED	IMPLEMENTATION	DRAWING NO.	ARR-D-PAPI33-S02
EGS	CENTER	REV	

REV	DATE	DESCRIPTION	JCN	REDLINE DATE	IPVD