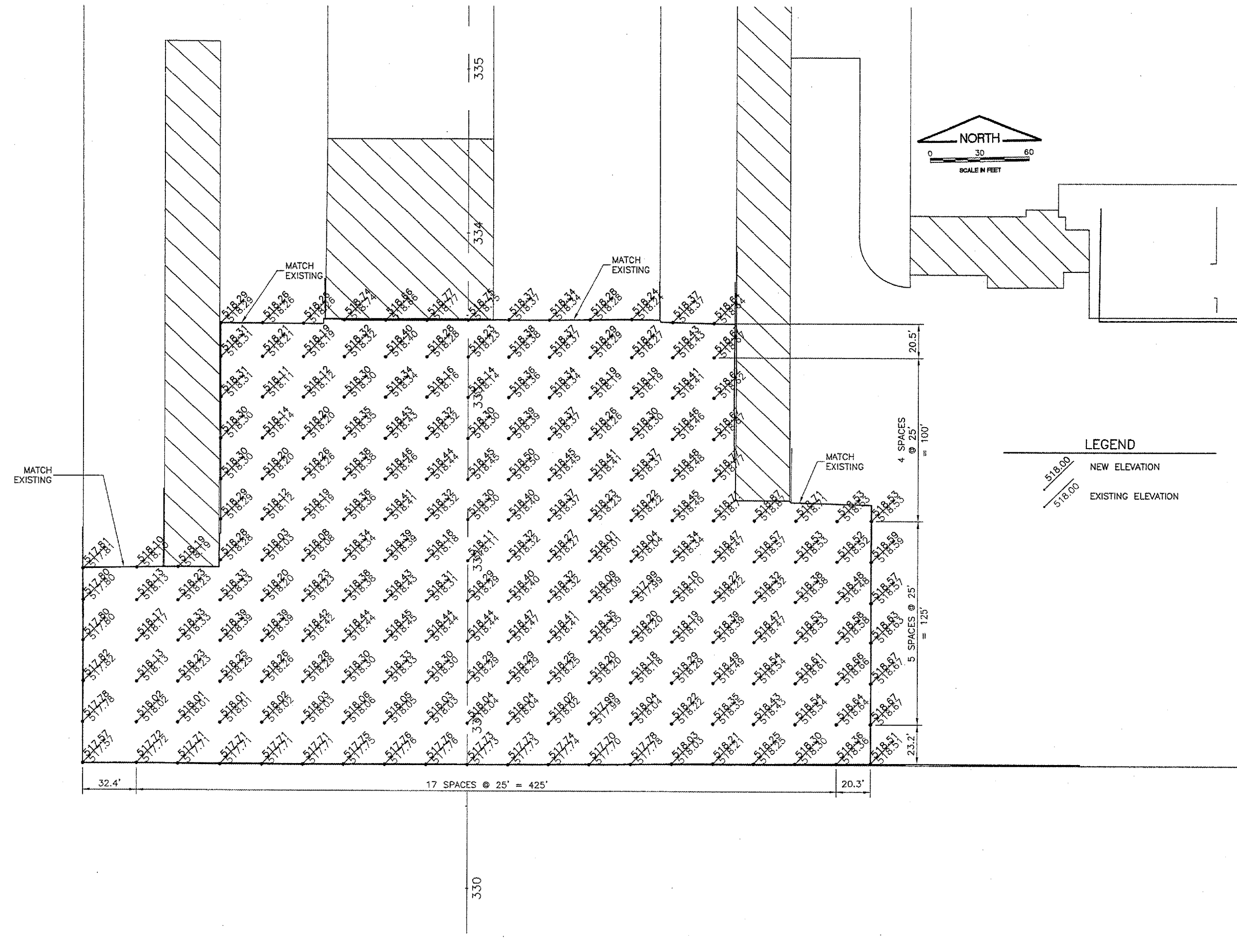
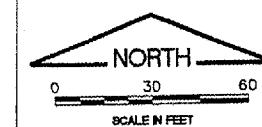


REVISIONS

NUMBER	BY	DATE



THIS BAR IS EQUAL TO 2" AT FULL SCALE (34X22).



**CENTRALIA MUNICIPAL AIRPORT
CENTRALIA, ILLINOIS**

REHABILITATE SOUTHWEST PORTION OF GA APRON

APRON STAKING PLAN

CMT
CRAWFORD, MURPHY & TILLY, INC.
CONSULTING ENGINEERS
© Copyright CMT, Inc.

DESIGN BY:	JEF
DRAWN BY:	CMT
CHECKED BY:	JEF
APPROVED BY:	JEF
DATE:	04/21/2006
JOB No:	05072-05
IL PROJ. NO. ENL-3556	
AIP PROJ. NO. 3-17-0015-B9	
SHEET 7 OF 16 SHEET	