

INSPECTION HOLES AND UNDERDRAIN REMOVAL

EXISTING UNDERDRAINS THAT ARE LOCATED IN THE PROPOSED PAVEMENT SECTION OR THE 16" SOIL PROCESSING AREA WILL BE REMOVED.

EXISTING UNDERDRAINS THAT ARE LOCATED BENEATH THE 16" SOIL PROCESS AREA WILL BE EXCAVATED.

HOLES THAT REMAIN FROM REMOVING UNDERDRAIN PIPE AT MANHOLES OR PIPE SECTIONS WILL BE REPAIRED. THE REPAIR WILL RESTORE REINFORCING AND FULL WALL THICKNESS WITH AR610 STRUCTURAL CONCRETE.

ALONG THE LINE OF UNDERDRAIN REMOVAL, INSPECTION HOLES WILL BE REMOVED TO A DEPTH BENEATH THE SOIL PROCESS ELEVATION.

WHERE THE UNDERDRAIN PIPE IS EXCAVATED, P.E. TUBING OR BROKEN CLAY PIPE WILL NOT BE PERMITTED IN THE FILL USED FOR EMBANKMENTS.

WHERE THE UNDERDRAIN PIPE IS EXCAVATED BELOW THE SOIL PROCESSING DEPTH, THE EXCAVATION WILL BE BACKFILLED WITH A GRANULAR MATERIAL COMPLYING TO AR209 SPECIFICATIONS. LOOSE EARTH MATERIAL WILL BE REMOVED FROM THE EXCAVATION PRIOR TO PLACING THE AR209 GRANULAR MATERIAL.

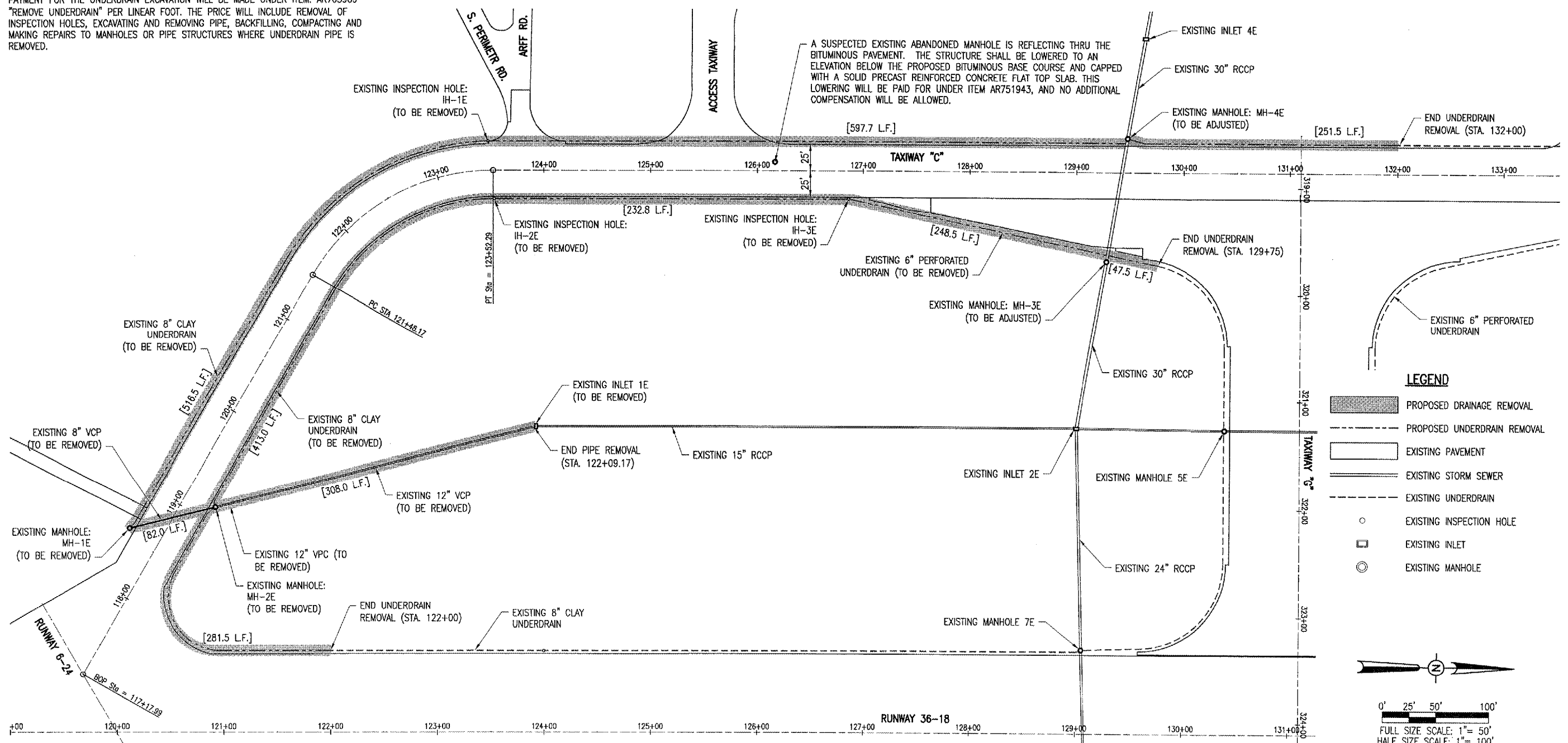
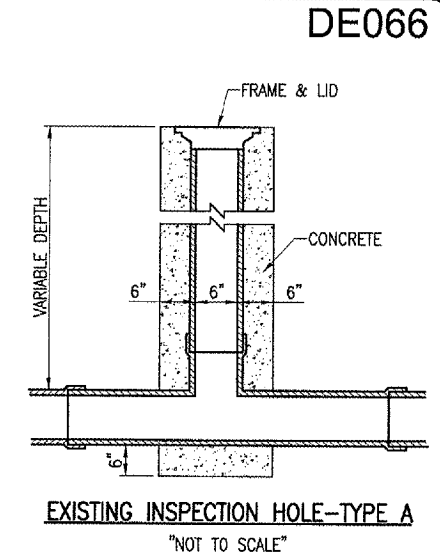
THE REMOVED INSPECTION HOLES AND PIPE MATERIAL WILL BE DISPOSED OFF AIRPORT SITE BY CONTRACTOR.

PAYMENT FOR THE UNDERDRAIN EXCAVATION WILL BE MADE UNDER ITEM: AR705900 "REMOVE UNDERDRAIN" PER LINEAR FOOT. THE PRICE WILL INCLUDE REMOVAL OF INSPECTION HOLES, EXCAVATING AND REMOVING PIPE, BACKFILLING, COMPACTING AND MAKING REPAIRS TO MANHOLES OR PIPE STRUCTURES WHERE UNDERDRAIN PIPE IS REMOVED.

DRAINAGE REMOVAL AND ADJUSTMENT QUANTITIES				
ITEM No.	DESCRIPTION	UNIT	QUANTITY	AS BUILT QUANTITY
AR701900	REMOVE PIPE	L.F.	390	
AR705900	REMOVE UNDERDRAIN	L.F.	2,689	
AR751900	REMOVE INLET	EACH	1	
AR751903	REMOVE MANHOLE	EACH	2	
AR751943	ADJUST MANHOLE	EACH	3	

AR701900 "REMOVE PIPE"		
STRUCTURES	LOCATION	DISTANCE (L.F.)
MH-1E TO MH-2E	TXY "C" STA. 118+58 LT. TO TXY "C" STA. 119+15 RT.	82
MH-2E TO INLET-1E	TXY "C" STA. 119+15 RT. TO TXY "C" STA. 122+09.17 RT.	308

AR705900 "REMOVE UNDERDRAIN"		
STRUCTURES	LOCATION	DISTANCE (L.F.)
MH-1E TO IH-1E	TXY "C" STA. 118+58 LT. TO TXY "C" STA. 123+48 LT.	516.5
IH-1E TO MH-4E	TXY "C" STA. 123+48 LT. TO TXY "C" STA. 129+47 LT.	597.7
MH-4E TO 132+00	TXY "C" STA. 129+47 LT. TO TXY "C" STA. 132+00 LT.	251.5
122+00 TO MH-2E	RWY 36-18 STA. 122+00 RT. TO TXY "C" STA. 119+15 RT.	281.5
MH-2E TO IH-2E	TXY "C" STA. 119+15 RT. TO TXY "C" STA. 123+53 RT.	413.0
IH-2E TO IH-3E	TXY "C" STA. 123+53 RT. TO TXY "C" STA. 126+86 RT.	332.8
IH-3E TO MH-3E	TXY "C" STA. 126+86 RT. TO TXY "C" STA. 129+28 RT.	248.5
MH-3E TO 129+75	TXY "C" STA. 129+28 RT. TO TXY "C" STA. 129+75 RT.	47.5



BY	
REVISION	
DATE	
 DECATUR, ILLINOIS	
I.L. PROJ.: DEC-3588 A.I.P. PROJ.: 3-17-00	
I&E Project No. 802-06TYD.0800 Revision R-131DRN.DWG Scale 1"=50' Date 02/08/06	CCC 02/08/06 CCC 02/08/06 WAM 03/31/06
 Hanson Professional Services Inc. 1525 South Sixth Street Springfield, Illinois 62703-2886 Offices Nationwide	
TAXIWAY "C" RECONSTRUCTION	DRAINAGE REMOVAL PLAN
10 10 of 66 sheets	