

QUANTITIES				
ITEM No.	DESCRIPTION	UNIT	QUANTITY	AS BUILT QUANTITY
AR701512	12" RCP, CLASS IV	L.F.	313	
AR705411	POROUS BACKFILL No. 1	C.Y.	448	
AR705528	6" PERFORATED UNDERDRAIN W/SOCK	L.F.	2,503	
AR705630	UNDERDRAIN INSPECTION HOLE	EACH	8	
AR751410	INLET	EACH	1	
AR751540	MANHOLE 4'	EACH	2	
AR751943	ADJUST MANHOLE	EACH	3	

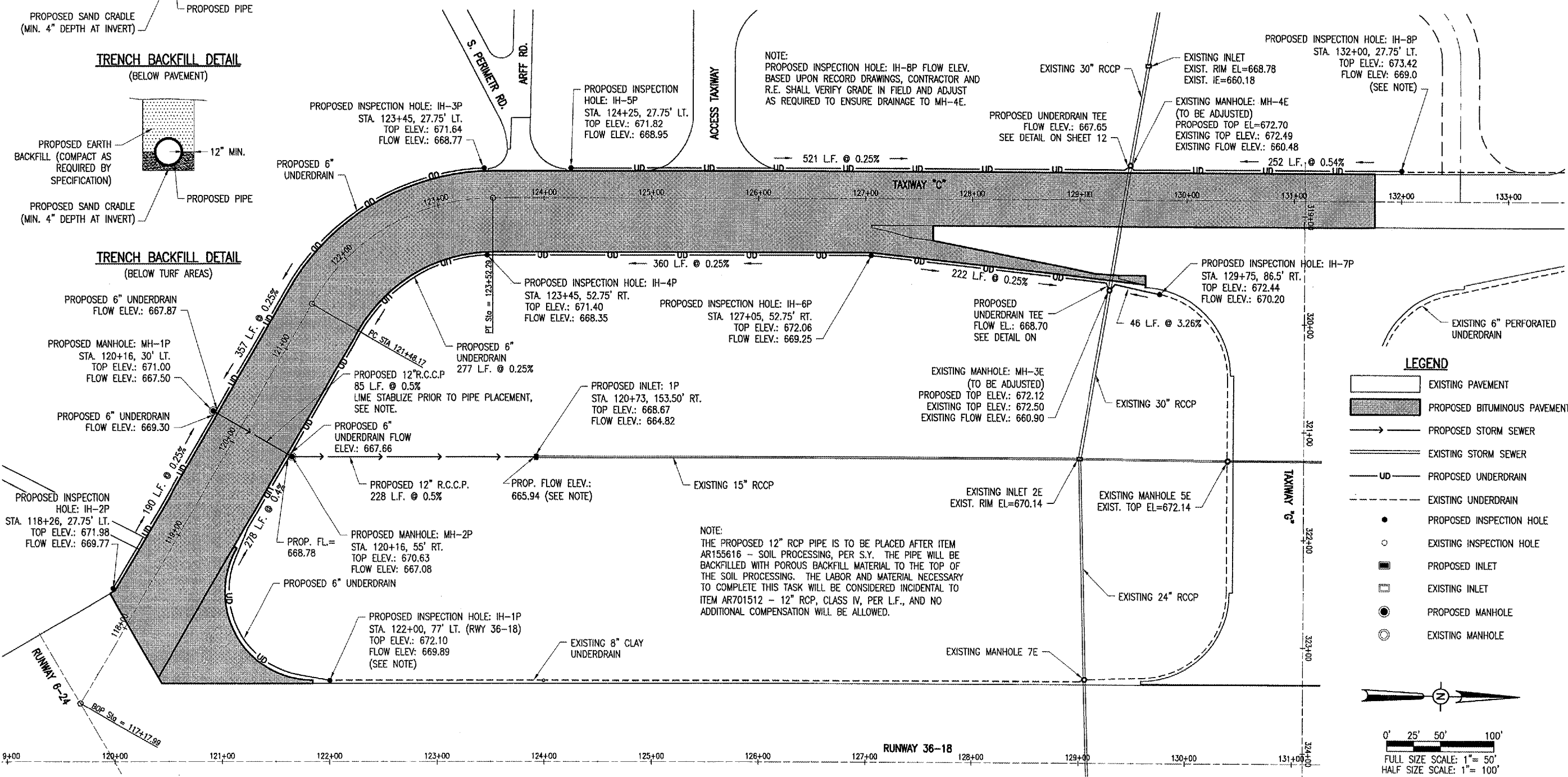
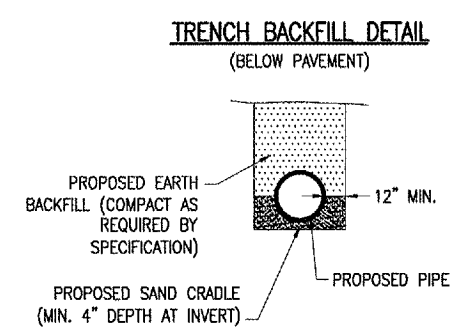
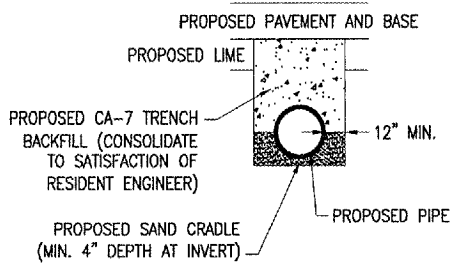
AR705630 - UNDERDRAIN INSPECTION HOLE								
STRUCTURE	TOP ELEV.	FLOW ELEV.	NORTHING	EASTING	STATION	OFFSET	TYPE	WORK AREA
IH-1P	672.10	669.89	1143858.9706	842977.4946	*122+00	77' LT.	A	1
IH-2P	671.98	669.77	1143656.8200	842892.3316	118+26	27.75' LT.	A	1
IH-3P	671.64	668.77	1144002.6790	842502.3627	123+45	27.75' LT.	A	2
IH-4P	671.40	668.35	1144005.6637	842582.8074	123+45	52.75' RT.	A	2
IH-5P	671.82	668.95	1144083.6966	842502.1843	124+25	27.75' LT.	A	3
IH-6P	672.06	669.25	1144363.6906	842582.8138	127+05	52.75' RT.	A	3
IH-7P	672.44	670.20	1144633.6806	842616.6770	129+75	86.5' RT.	A	3
IH-8P	673.42	670.50	1144858.6118	842501.9312	132+00	27.75' LT.	A	3

\* DENOTES STATIONING AND OFFSET BASED ON RUNWAY 18/36

AR751540 - STORM SEWER STRUCTURES - PROPOSED MANHOLES								
STRUCTURE	TOP ELEV.	FLOW ELEV.	NORTHING	EASTING	STATION	OFFSET	TYPE	WORK AREA
MH-1P	671.09	667.50	1143749.9943	842726.7309	120+16	30' LT.	4'	1
MH-2P	670.71	667.08	1143823.5749	842769.2855	120+16	55' RT.	4'	1

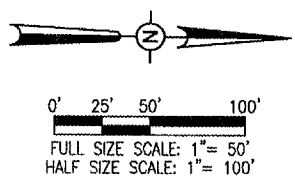
AR751943 - ADJUST MANHOLE								
STRUCTURE	PROPOSED TOP ELEV.	EXISTING TOP ELEV.	EXISTING FLOW ELEV.	NORTHING	EASTING	STATION	OFFSET	WORK AREA
MH-4E	672.70	672.49	660.48	1152398.7190	831807.3726	129+47.83	31.94' LT.	3

AR751410 - STORM SEWER STRUCTURES - PROPOSED INLETS								
STRUCTURE	TOP ELEV.	FLOW ELEV.	NORTHING	EASTING	STATION	OFFSET	TYPE	WORK AREA
1P	668.67	664.82	1151846.3511	832083.9211	123+92.54	239.62' RT.	A	1



**LEGEND**

- EXISTING PAVEMENT
- PROPOSED BITUMINOUS PAVEMENT
- PROPOSED STORM SEWER
- EXISTING STORM SEWER
- PROPOSED UNDERDRAIN
- EXISTING UNDERDRAIN
- PROPOSED INSPECTION HOLE
- EXISTING INSPECTION HOLE
- PROPOSED INLET
- EXISTING INLET
- PROPOSED MANHOLE
- EXISTING MANHOLE



BY: \_\_\_\_\_

REVISION: \_\_\_\_\_

DATE: \_\_\_\_\_

DECATUR, ILLINOIS

DECATUR AIRPORT

PROJ.: DEC-3568 A.I.P. PROJ.: 3-17-00

802-061000.DWG  
R-132DRN.DWG  
Scale: 1" = 50'  
Date: 07/08/06

LAYOUT: CCC 02/08/06  
DRAWN: CCC 02/08/06  
REVIEWED: WJM 03/31/06

**HANSON**  
Hanson Professional Services Inc.  
1525 South Sixth Street  
Springfield, Illinois 62703-2886  
Offices Nationwide

TAXIWAY "C" RECONSTRUCTION

PROPOSED DRAINAGE PLAN

11

11 of 56 sheets

MAY 01, 2006 2:03 PM RAW  
I:\AIRPORTS\DECATUR\802-061000\PROJECTS\132DRN.DWG - PROPOSED