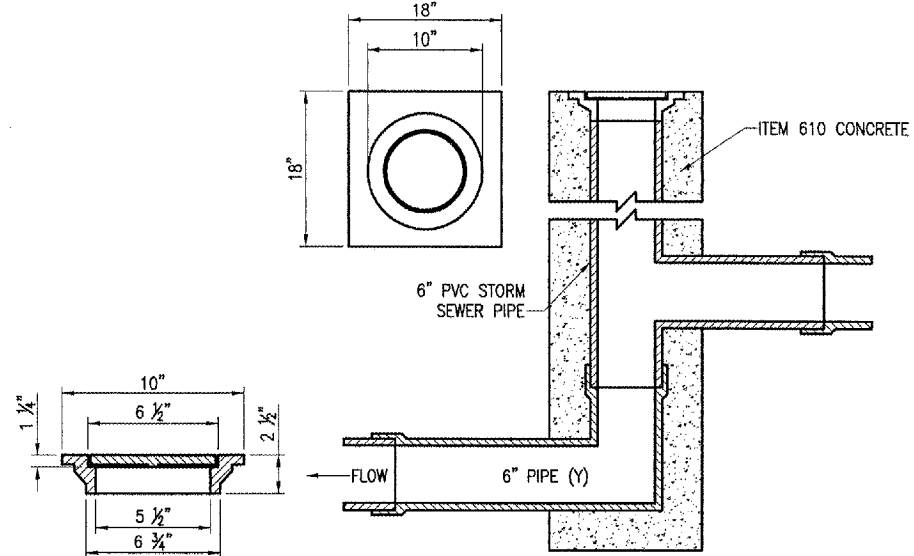


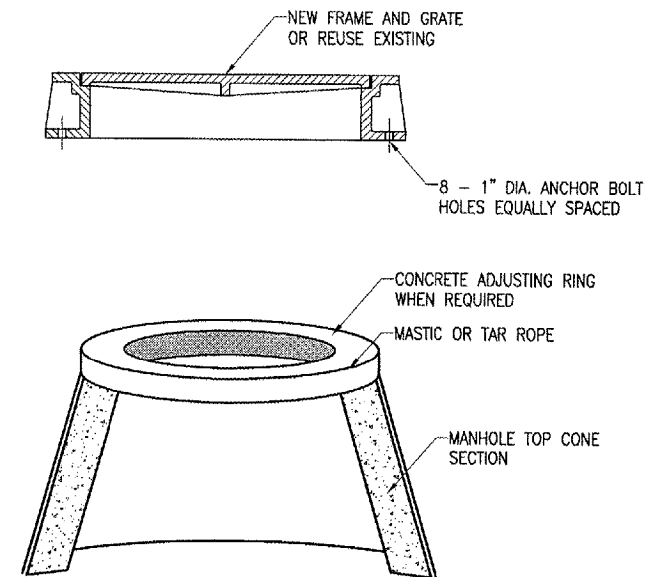
UNDERDRAIN CONNECTION DETAIL
"NOT TO SCALE"



CAST IRON FRAME AND COVER

NEENAH R-6013, DEETER 1810,
EAST JORDAN 2790-6 OR
APPROVED EQUAL

INSPECTION HOLE
TYPE A



ADJUST MANHOLE DETAIL
"NOT TO SCALE"

INSPECTION HOLE NOTES

DIAMETER OF PIPE AS SPECIFIED.
1/2" CHAMFER TO BE USED ON ALL EXPOSED EDGES OF INSPECTION HOLES.
THE CONCRETE SHALL BE STRUCTURAL PORTLAND CEMENT CONCRETE (NON-REINFORCED).
THE INSPECTION FRAME AND LID SHALL BE EAST JORDAN 2790-6, NEENAH R-6013 OR DEETER 1810.
THE PROPOSED INSPECTION HOLE WILL BE PAID FOR UNDER THE FOLLOWING:
ITEM AR705630 "UNDERDRAIN INSPECTION HOLE"

INLET NOTES

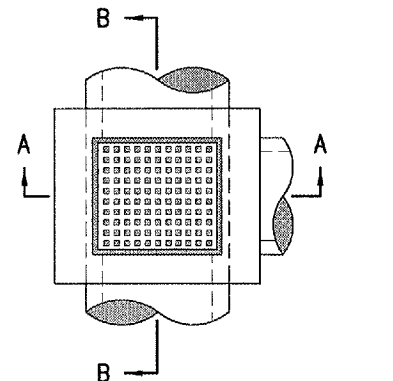
INLET TO BE CONSTRUCTED OF STRUCTURAL P.C. CONCRETE. THE CONTRACT UNIT PRICE PER INLET SHALL INCLUDE THE FRAME, GRATE AND STEPS IN PLACE AND COMPLETE PER UNIT.
1/2" CHAMFER TO BE USED ON ALL EXPOSED CORNERS OF INLETS. BARS TO BE INSTALLED 2" FROM FACE OF WALLS.
THE FRAME AND GRATE SHALL BE NEENAH R-3475-E, DEETER 2425-E.
INLET STEPS SHALL BE NEENAH R-1980-1. 12" TO 15" C.C. STEPS TO BE INSTALLED WHEN Y IS GREATER THAN 5'. THE COST OF THE STEPS SHALL BE INCLUDED IN THE CONTRACT UNIT PRICE FOR EACH INLET.

MANHOLE NOTES

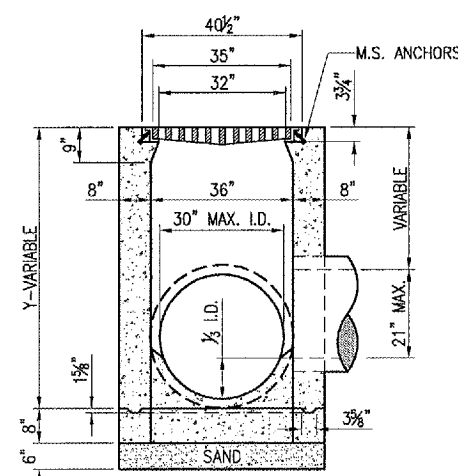
MANHOLE TO BE CONSTRUCTED OF STRUCTURAL P.C. CONCRETE. THE CONTRACT UNIT PRICE PER MANHOLE SHALL INCLUDE THE FRAME, LID AND STEPS PER UNIT.
THE FRAME AND LID SHALL BE NEENAH R-3492 OR EQUAL, ANCHORED TO THE MANHOLE STRUCTURE.
MANHOLE STEPS SHALL BE NEENAH R-1980-1. 12" TO 15" C.C. STEPS TO BE INSTALLED WHEN Y IS GREATER THAN 5'. THE COST OF THE STEPS SHALL BE INCLUDED IN THE CONTRACT UNIT PRICE FOR EACH MANHOLE.
THE PROPOSED MANHOLES WILL BE PAID FOR UNDER THE FOLLOWING:
ITEM AR751540 "MANHOLE 4"

ADJUSTED MANHOLE NOTES

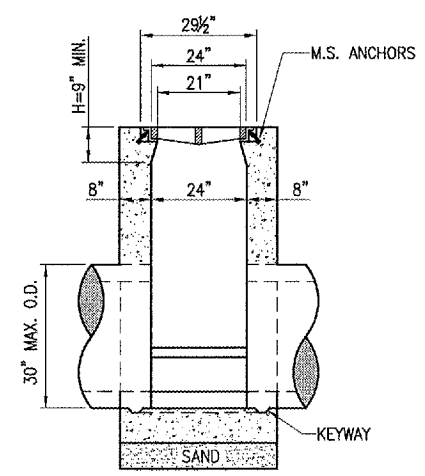
THE ADJUSTMENTS NECESSARY FOR THE CHANGE IN MANHOLE TOP ELEVATIONS VARIES BY LOCATION. TO RAISE THE ELEVATION A CONCRETE MANHOLE ADJUSTING RING CAN BE USED TO OBTAIN THE PROPER ELEVATION FOR THE TOP OF THE LID ELEVATION. EXISTING CONCRETE MANHOLE ADJUSTING RINGS EXIST ON THE MANHOLE AT STA. 129+28 RT, TO BE LOWERED, AND THE ADJUSTMENT WILL BE ACCOMPLISHED BY REMOVING THE EXISTING RINGS. THE SUSPECTED EXISTING ABANDONED MANHOLE AT STA. 126+20 SHALL BE LOWERED BY REMOVING THE MANHOLE WALL AND CAPPING IT WITH A SOLID PRECAST REINFORCED CONCRETE FLAT TOP SLAB, AT AN ELEVATION BENEATH THE PROPOSED BITUMINOUS BASE COURSE.
THE PROPOSED CONCRETE ADJUSTING RING SHALL CONFORM TO THE REQUIREMENTS OF ASTM C478. THE RING DIAMETER WILL MATCH THE TOP OF THE CONE SECTION OF THE MANHOLE, AND BE OF EQUAL WALL THICKNESS TO THE STRUCTURE. THE RING WILL BE SECURED WITH MASTIC OR TAR ROPE.
IF CASTING LEVELING IS NECESSARY, MORTAR LEVELING BETWEEN RING AND CASTING WILL BE ALLOWED. THE MORTAR SHALL CONSIST OF ONE PART PORTLAND CEMENT AND TWO PARTS SAND. THE PORTLAND CEMENT SHALL CONFORM TO THE REQUIREMENTS OF ASTM C150, TYPE 1. THE SAND SHALL CONFORM TO THE REQUIREMENTS OF ASTM C144.
THE PROPOSED MANHOLE ADJUSTMENTS WILL BE PAID FOR UNDER THE FOLLOWING:
ITEM AR751943 - ADJUST MANHOLE, PER EACH.



REINFORCING STEEL BAR TYPE



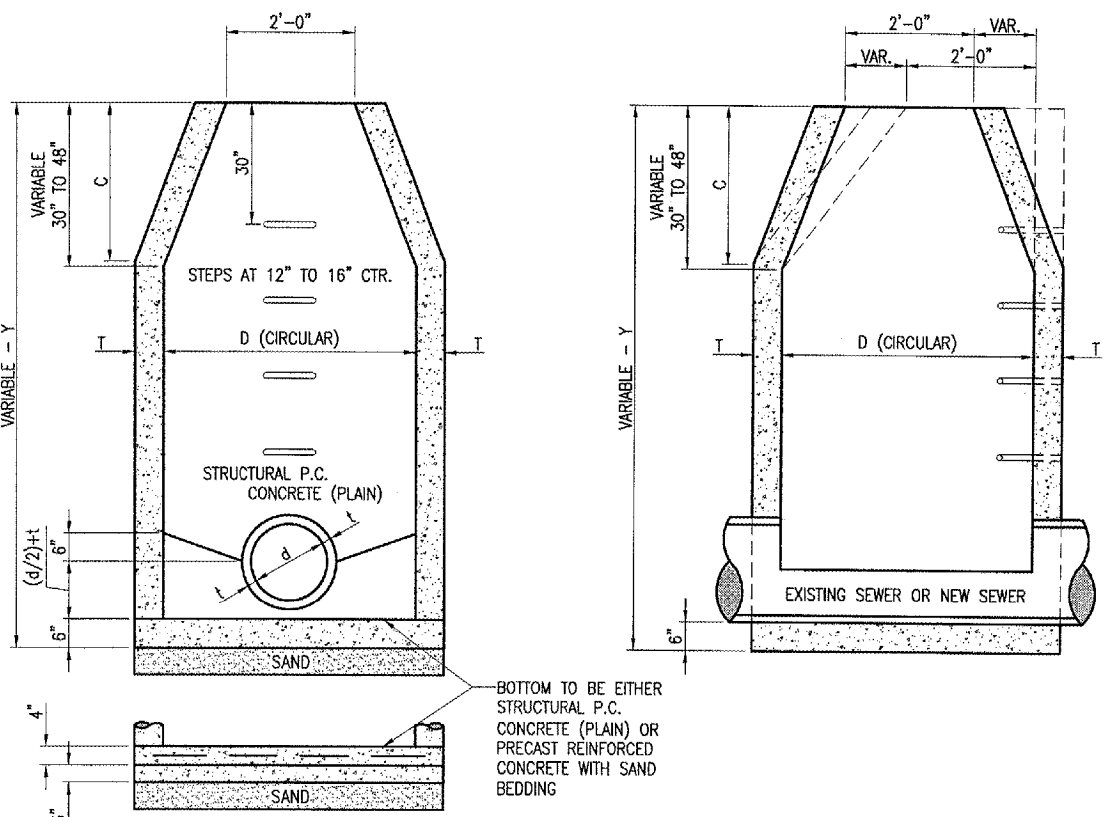
SECTION A-A



SECTION B-B

REINFORCING BARS SCHEDULE					
TYPE	QUANTITY PER INLET	DIMENSIONS		SIZE	APPROX. WT. OF BARS IN INLET
		A	B		
A	2	3'-4"	2'-4"	#5	16.7

INLET DETAILS - TYPE "A"
"NOT TO SCALE"



REINFORCING BARS SCHEDULE						
ALT. MATERIAL FOR WALLS	D	C	T	D	C	T
PRECAST REINFORCED CONC. RINGS	4'	2'-6"	5"	5'	4'-0"	6"
MONOLITHIC CONCRETE	4'	2'-6"	6"	5'	4'-0"	8"

MANHOLE DETAILS
"NOT TO SCALE"

APR 27, 2006 11:02 PM RAW
I:\AIRPORTS\DECATUR\802-067X\AIRPORT_SHEETS\A-R-031DRN.DWG - Drainage Details

BY	
REVISION	
DATE	
 DECATUR, ILLINOIS <small>Hanson Professional Services Inc. 1528 South Sixth Street Springfield, Illinois 62703-2886 Offices Nationwide</small>	
PROJECT NO.	802-067X/D 0800
DATE	02/15/06
LAYOUT	CCC 02/16/06
DRAWN	CCC 02/16/06
REVIEWED	WJM 03/31/06
TAXIWAY "C" RECONSTRUCTION DRAINAGE DETAILS	
12	
12 of 66 sheets	