

TIE DOWN NOTES

NEW TIE DOWNS WILL BE INSTALLED IN ACCORDANCE WITH DETAIL "B" AT THE LOCATIONS SHOWN ON THIS SHEET.

THE PERIMETER OF EACH PROPOSED TIE DOWN SHALL BE SAWS.

TIE DOWN CASTINGS SHALL BE NEENAH R-3490A OR EQUAL.

CONCRETE SHALL MEET THE REQUIREMENTS OF 610 - STRUCTURAL CONCRETE.

THE PROPOSED TIE DOWN MARKING WILL BE IN ACCORDANCE WITH THE TIE DOWN MARKING DETAIL ON THIS SHEET AND THE SPECIFICATIONS, AND PAID FOR AS NOTED BELOW.

THE TIE DOWN INSTALLATION WILL BE PAID FOR UNDER ITEM: AR510510 "TIE DOWN" 16 EA.

620-PAVEMENT MARKING-WATERBORNE NOTES

THE PAVEMENT MARKING-WATERBORNE (620) SHALL BE PLACED IN ACCORDANCE WITH ITEM 620 "PAVEMENT MARKING" AS STATED ON PAGE 77 OF THE SUPPLEMENTAL SPECIFICATIONS AND RECURRING SPECIAL PROVISIONS, ADOPTED JULY 1, 2004.

THIS ITEM SHALL CONSIST OF TAXIWAY CENTERLINE, HOLDING POSITION (YELLOW) AND TIE DOWN MARKING IN ACCORDANCE WITH THESE SPECIFICATIONS AND AT THE LOCATIONS SHOWN ON THE CONSTRUCTION PLANS. THE PROPOSED PAVEMENT MARKING WILL BE APPLIED IN TWO APPLICATIONS.

ANY MATERIAL DELIVERED THAT FAILS TO MEET THE SPECIFICATIONS SHALL BE DISPOSED OF BY THE VENDOR AND IMMEDIATELY REPLACED WITH ACCEPTABLE MATERIAL ENTIRELY AT THE VENDOR'S EXPENSE, INCLUDING HANDLING AND TRANSPORTATION CHARGES.

ALL PROPOSED MARKING WILL BE COMPLETED IN ACCORDANCE WITH THE DETAILS SHOWN ON THE CONSTRUCTION PLANS.

GLASS BEADS SHALL BE REQUIRED ONLY ON THE SECOND APPLICATION.

CUT-OFF SHEETS WILL BE REQUIRED TO INSURE STRAIGHT EDGES.

THE PROPOSED MARKING WILL BE PAID FOR UNDER ITEM: AR620520 PAVEMENT MARKING-WATERBORNE 3,820 S.F.

MARKING QUANTITIES			
DESCRIPTION	UNIT AREA	NO. REQUIRED	TOTAL AREA
TAXIWAY CENTERLINE	3,224	1	3,175
TIE DOWN	39	7	273
HOLDING POSITION	124	3	372
		TOTAL YELLOW	3,820
HOLDING POSITION (BLACK)	196	3	588
		TOTAL BLACK	588
		TOTAL MARKING	4,408

620-BLACK BORDER NOTES

THE BLACK BORDER (620) SHALL BE PLACED IN ACCORDANCE WITH ITEM 620 "PAVEMENT MARKING" AS STATED ON PAGE 77 OF THE SUPPLEMENTAL SPECIFICATIONS AND RECURRING SPECIAL PROVISIONS, ADOPTED JULY 1, 2004.

THIS ITEM SHALL CONSIST OF THE BLACK BORDER AROUND THE HOLDING POSITION MARKING IN ACCORDANCE WITH THESE SPECIFICATIONS AND AT THE LOCATIONS SHOWN ON THE CONSTRUCTION PLANS. THE PROPOSED PAVEMENT MARKING WILL BE APPLIED IN TWO APPLICATIONS.

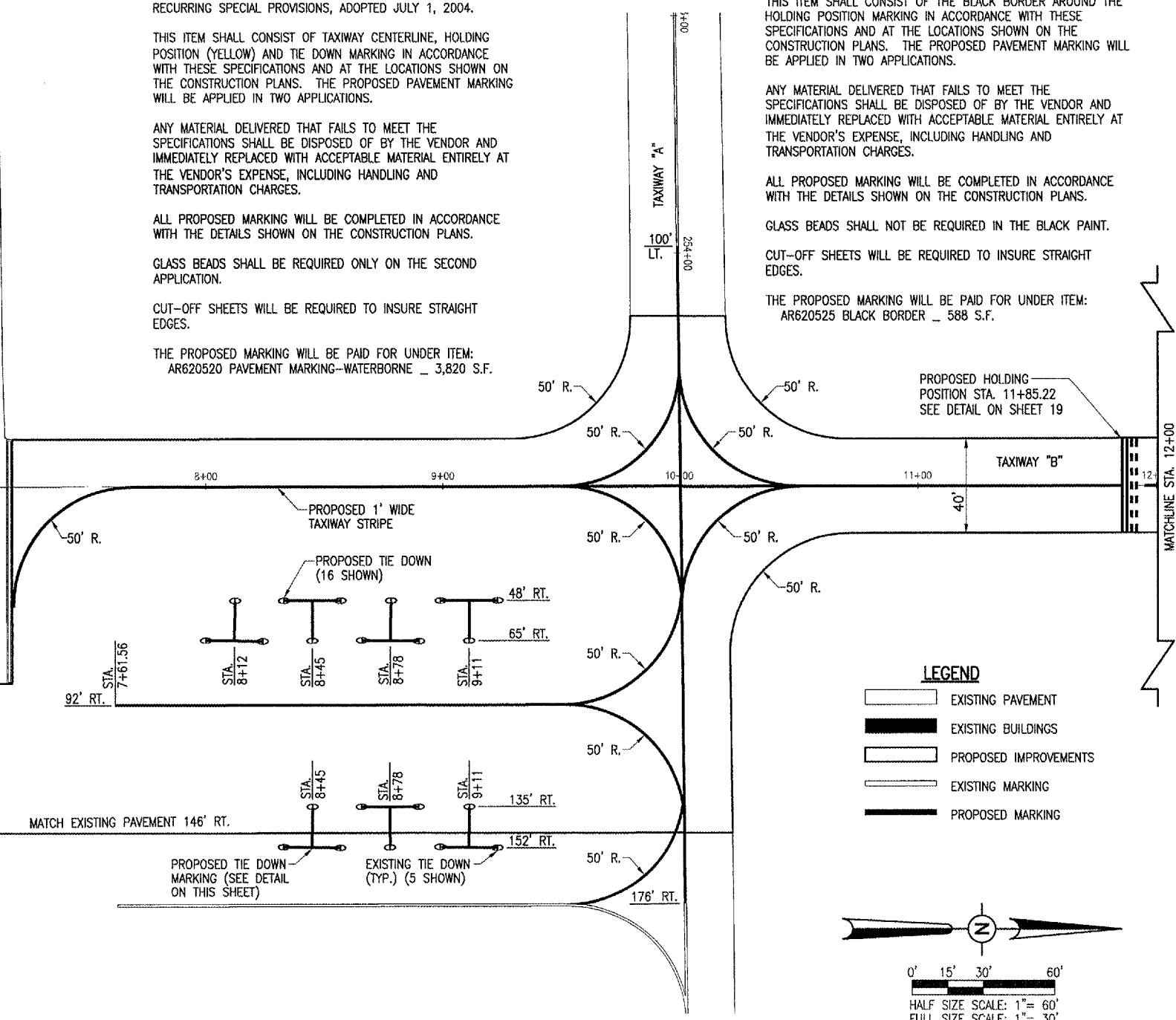
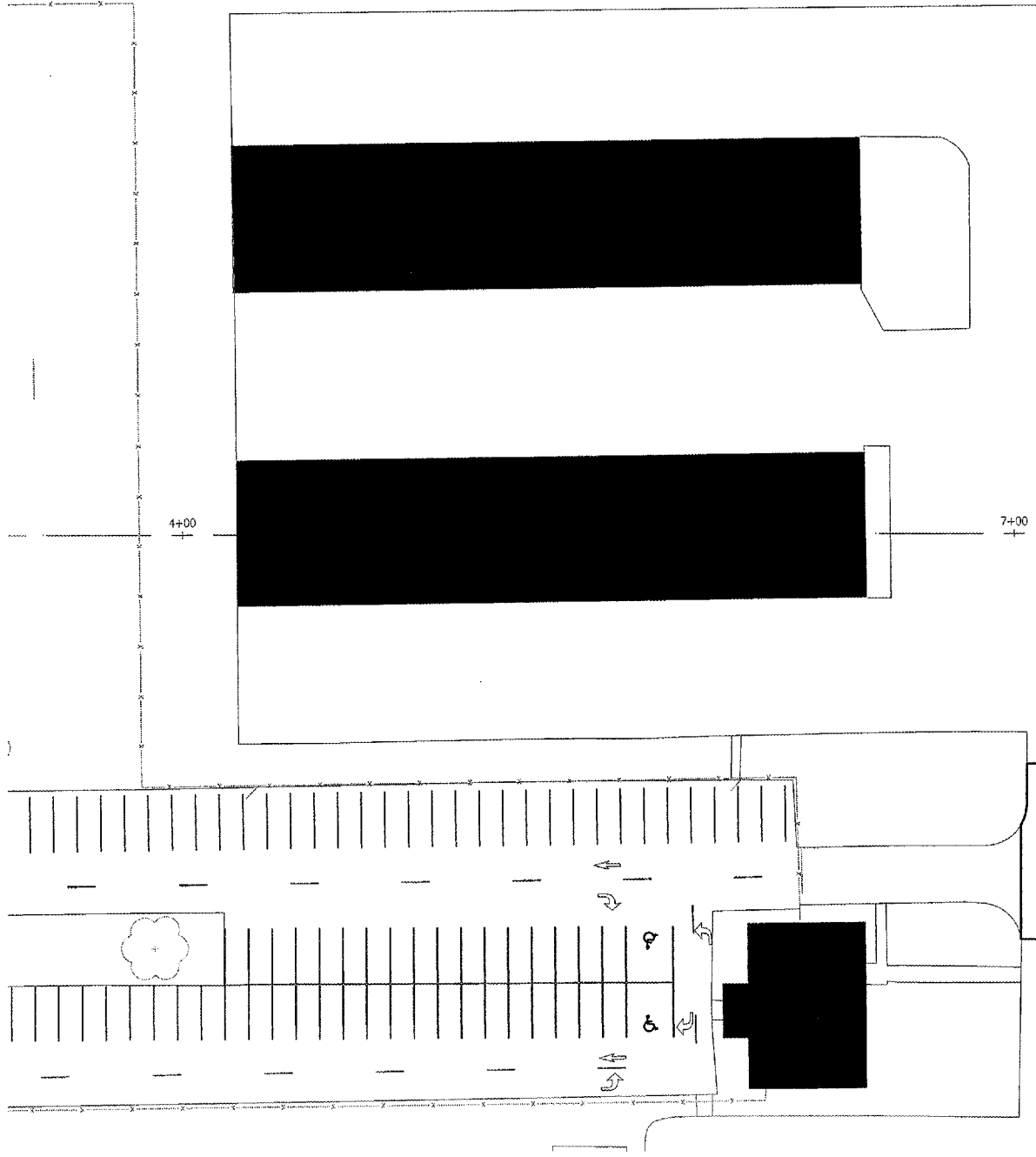
ANY MATERIAL DELIVERED THAT FAILS TO MEET THE SPECIFICATIONS SHALL BE DISPOSED OF BY THE VENDOR AND IMMEDIATELY REPLACED WITH ACCEPTABLE MATERIAL ENTIRELY AT THE VENDOR'S EXPENSE, INCLUDING HANDLING AND TRANSPORTATION CHARGES.

ALL PROPOSED MARKING WILL BE COMPLETED IN ACCORDANCE WITH THE DETAILS SHOWN ON THE CONSTRUCTION PLANS.

GLASS BEADS SHALL NOT BE REQUIRED IN THE BLACK PAINT.

CUT-OFF SHEETS WILL BE REQUIRED TO INSURE STRAIGHT EDGES.

THE PROPOSED MARKING WILL BE PAID FOR UNDER ITEM: AR620525 BLACK BORDER 588 S.F.



LEGEND

- EXISTING PAVEMENT
- EXISTING BUILDINGS
- PROPOSED IMPROVEMENTS
- EXISTING MARKING
- PROPOSED MARKING

HALF SIZE SCALE: 1" = 60'
FULL SIZE SCALE: 1" = 30'

DATE	REVISION	BY

Kewanee Municipal Airport
Kewanee, Henry County, Illinois

IL PROJ.: E21-3533 A.I.P. PROJ.: 3-17-0058-B10

NEI Project No.: 810-061XXD_0800	DATE: 08/30/05
Filename: R-152MRK.DWG	R.A.W.:
Scale: 1" = 30'	B.A.K.:
Date: 08/30/05	C.A.H.:
LAYOUT	08/30/05
DRAWN	08/30/05
REVIEWED	04/27/06

Hanson Professional Services Inc.
3725 Dandy Trail, Suite 100
Indianapolis, Indiana 46214
Chicago Nationwide

OVERLAY TAXIWAYS AND APRON
PROPOSED MARKING PLAN
STA. 4+00 TO STA. 12+00