

F.A.P. RTE.	SECTION	COUNTY	TOTAL SHEETS	SHEET NO.
330	2017-2 WEED SPRAY	KANKAKEE	5	1
		ILLINOIS	CONTRACT NO. 66H22	

INDEX OF SHEETS

- 1 COVER SHEET
- 2 GENERAL NOTES
- 3 SUMMARY OF QUANTITIES
- 4-5 HERBICIDE RESTRICTION MAPS

LIST OF ILLINOIS DOT HIGHWAY STANDARDS

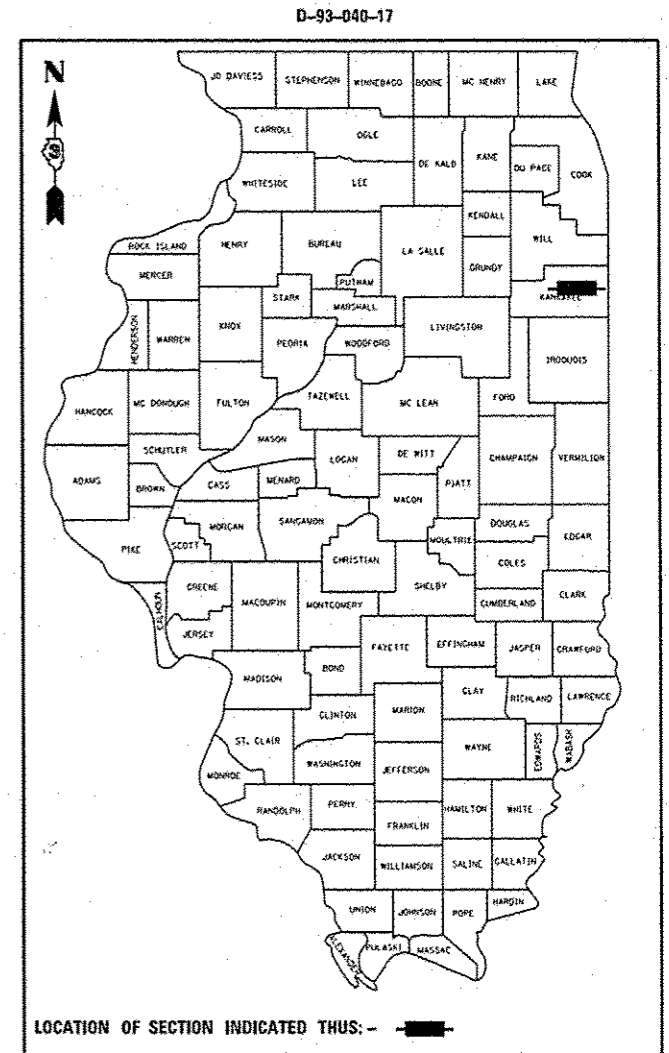
- 000001-06 STANDARD SYMBOLS, ABBREVIATIONS AND PATTERNS
- 701101-05 OFF-ROAD OPERATIONS MULTILANE, 15' (4.5 m) TO 24" (600 mm) FROM PAVEMENT EDGE
- 701106-02 OFF-ROAD OPERATIONS, MULTILANE, MORE THAN 15' (4.5 m) AWAY
- 701426-09 LANE CLOSURE, MULTILANE INTERMITTENT OR MOVING OPERATION, FOR SPEEDS ≥ 45 MPH
- 701901-06 TRAFFIC CONTROL DEVICES

PROPOSED  
HIGHWAY PLANS

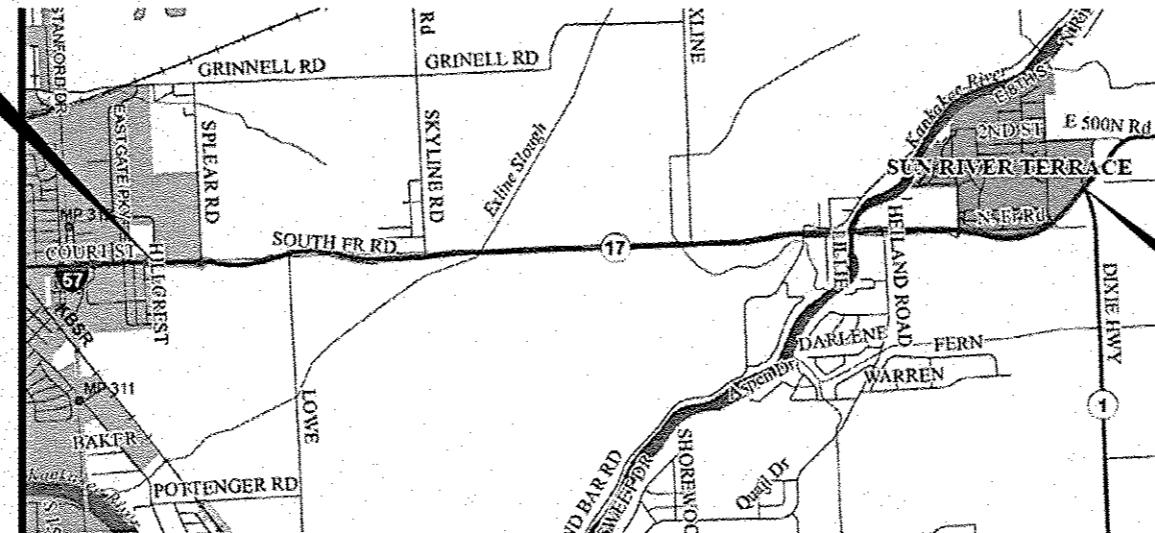
FAP 330 (IL 17)  
SECTION 2017-2 WEED SPRAY

WEED SPRAY  
KANKAKEE COUNTY

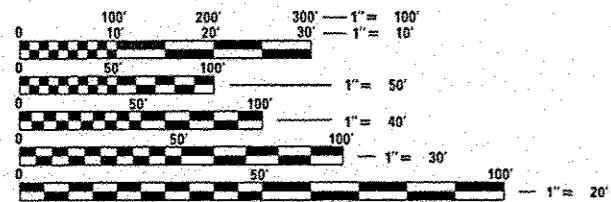
C-93-055-17



PROJECT LIMITS  
EASTGATE PARKWAY



PROJECT LIMITS  
IL 1 (S)



FULL SIZE PLANS HAVE BEEN PREPARED USING STANDARD ENGINEERING SCALES. REDUCED SIZED PLANS WILL NOT CONFORM TO STANDARD SCALES. IN MAKING MEASUREMENTS ON REDUCED PLANS, THE ABOVE SCALES MAY BE USED.

J.U.L.I.E.  
JOINT UTILITY LOCATION INFORMATION FOR EXCAVATION  
1-800-892-0123  
OR 811

PROJECT ENGINEER: DAVE ALEXANDER, PE  
UNIT CHIEF: DARCY CARPENTER  
DISTRICT 3 NO. (815) 434-6131  
CONTRACT NO. 66H22

OTHER PRINCIPAL ARTERIAL  
2015 ADT = 10,800  
P.V. = 78%  
S.U. = 10%  
M.U. = 12%

STATE OF ILLINOIS  
DEPARTMENT OF TRANSPORTATION

SUBMITTED *March 21, 2017*  
*Kevin Mochel*  
REGIONAL ENGINEER

*May 12, 2017*  
*Maureen M. Addis, PE*  
ENGINEER OF DESIGN AND ENVIRONMENT

*May 12, 2017*  
*James J. [Signature]*  
DIRECTOR OF PROGRAM DEVELOPMENT

PRINTED BY THE AUTHORITY  
OF THE STATE OF ILLINOIS

REV

GENERAL NOTES

ANY REFERENCE TO A STANDARD IN THESE PLANS SHALL BE INTERPRETED TO MEAN THE EDITION AS INDICATED BY THE SUBNUMBER SHOWN IN THE LIST OF STANDARDS OR THE COPY INCLUDED IN THESE PLANS.

THE FOLLOWING RATES OF APPLICATION HAVE BEEN USED IN CALCULATING PLAN QUANTITIES:

HERBICIDE / INGREDIENTS	APPLICATION RATE		PAY ITEM
MILESTONE	6	OUNCES / ACRE	WEED CONTROL, BROADLEAF IN TURF
RODEO	6	PINTS / ACRE	WEED CONTROL, AQUATIC
ARSENAL	4	PINTS / ACRE	WEED CONTROL, AQUATIC
IMPROVED SURFACTANT	1	QUART / 100 GALLONS OF WATER	N/A
WATER	30	GALLONS MINIMUM / ACRE	N/A

COMMITMENTS: NONE

STATE OF ILLINOIS  
DEPARTMENT OF TRANSPORTATION  
DISTRICT THREE  
AS BUILT INFORMATION

\_\_\_\_\_  
SUPERVISING CONSTRUCTION FIELD ENGINEER

\_\_\_\_\_  
RESIDENT ENGINEER / TECHNICIAN

START & END DATES  
OF CONSTRUCTION: \_\_\_\_\_

INSPECTORS: \_\_\_\_\_

STATE OF ILLINOIS  
DEPARTMENT OF TRANSPORTATION  
DISTRICT THREE

PREPARED BY: *Don Benoit*  
DISTRICT STUDIES & PLANS ENGINEER

DATE: 3-20-17

EXAMINED BY: *Joseph A. Wickham*  
DISTRICT CONSTRUCTION ENGINEER

*Michael A. Short*  
DISTRICT MATERIALS ENGINEER

*Tom Hines*  
DISTRICT OPERATIONS ENGINEER

STATE OF ILLINOIS  
DEPARTMENT OF TRANSPORTATION

GENERAL NOTES

F.A.P. RTE.	SECTION	COUNTY	TOTAL SHEETS	SHEET NO.
330	2017-2 WEED SPRAY	KANKAKEE	5	2
			CONTRACT NO. 66H22	

SCALE: \_\_\_\_\_ SHEET \_\_\_\_\_ OF \_\_\_\_\_ SHEETS STA. \_\_\_\_\_ TO STA. \_\_\_\_\_

ILLINOIS FED. AID PROJECT

REV

3/17/2017

RURAL

CONSTR. CODE  
100% STATE

CODE NO.	ITEM	UNIT	TOTAL QUANTITY	ROADWAY
				0031 ✓
67100100	MOBILIZATION	LSUM	1	1
K0029614	WEED CONTROL, AQUATIC	GALLON	3.45	3.45
K0029618	WEED CONTROL, BROADLEAF IN TURF	GALLON	3.68	3.68

3

REV



**NO SPRAYING SOUTH SIDE OF IL 17  
FROM N 2750 EAST RD TO LOWE RD**

FILE NAME = pw\11084EBIDINTEG.illinois.gov\PIWIDOT\Documents\DOT Offices\District 3\Projects\0366\DRAWING\0366H22-sht-details.dgn	USER NAME = carpenterdj	DESIGNED - _____	REVISED - _____	<b>STATE OF ILLINOIS DEPARTMENT OF TRANSPORTATION</b>	<b>HERBICIDE RESTRICTION AREA</b>		F.A.P. RTE. = 330	SECTION = 2017-2 WEED SPRAY	COUNTY = KANKAKEE	TOTAL SHEETS = 5	SHEET NO. = 4
	PLOT SCALE = 40.0000' / in.	CHECKED - _____	REVISED - _____				SCALE: _____ SHEET ____ OF ____ SHEETS STA. _____ TO STA. _____	CONTRACT NO. 66H22			ILLINOIS FED. AID PROJECT
Default	PLOT DATE = 3/17/2017	DATE - _____	REVISED - _____								



**HAND SPRAY TEASEL  
WITHIN 100' OF ABUTMENTS**

FILE NAME =	USER NAME = carpenterdj	DESIGNED - _____	REVISED - _____
pw\1\084EBIDINTEG.illinois.gov\PWIDOT\Documents\DOT Offices\District 3\Projects\0366\DRAWING\0366H22-sht-details.dgn		CHECKED - _____	REVISED - _____
Default	PLOT SCALE = 40.0000' / in.	DATE - _____	REVISED - _____
	PLOT DATE = 3/17/2017		

**STATE OF ILLINOIS  
DEPARTMENT OF TRANSPORTATION**

**HERBICIDE RESTRICTION AREA**

SCALE: \_\_\_\_\_ SHEET \_\_\_\_ OF \_\_\_\_ SHEETS STA. \_\_\_\_\_ TO STA. \_\_\_\_\_

F.A.P. RTE.	SECTION	COUNTY	TOTAL SHEETS	SHEET NO.
330	2017-2 WEED SPRAY	KANKAKEE	5	5
			CONTRACT NO. 66H22	
ILLINOIS FED. AID PROJECT				